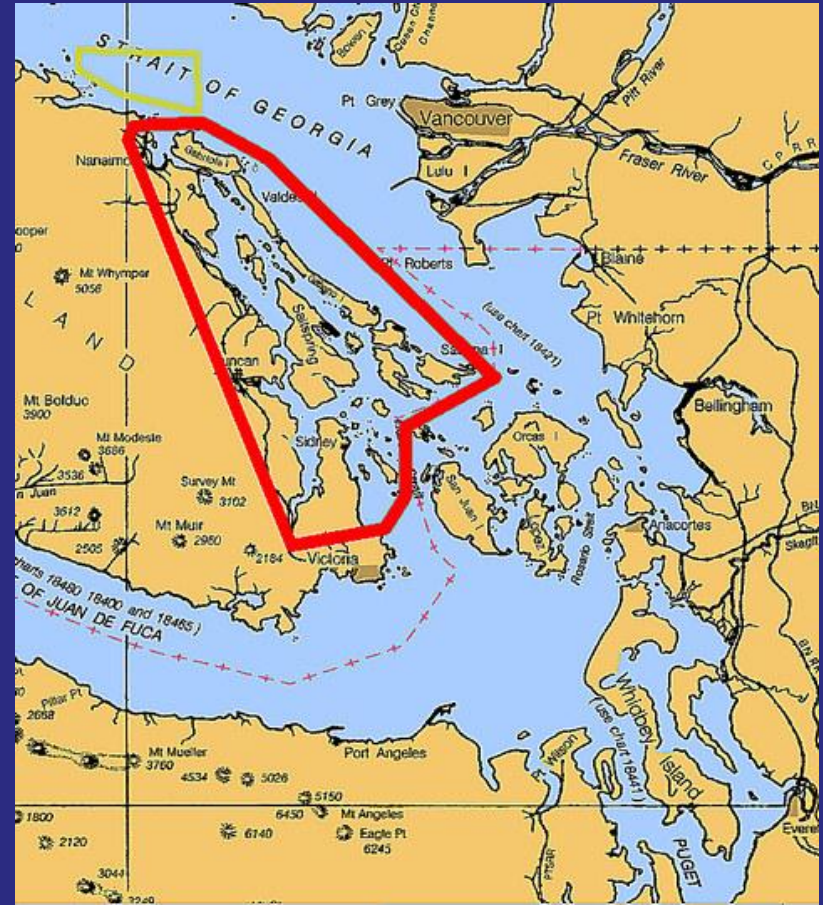


Cruising the B.C. Gulf Islands ----- and Lower Inside Vancouver Island

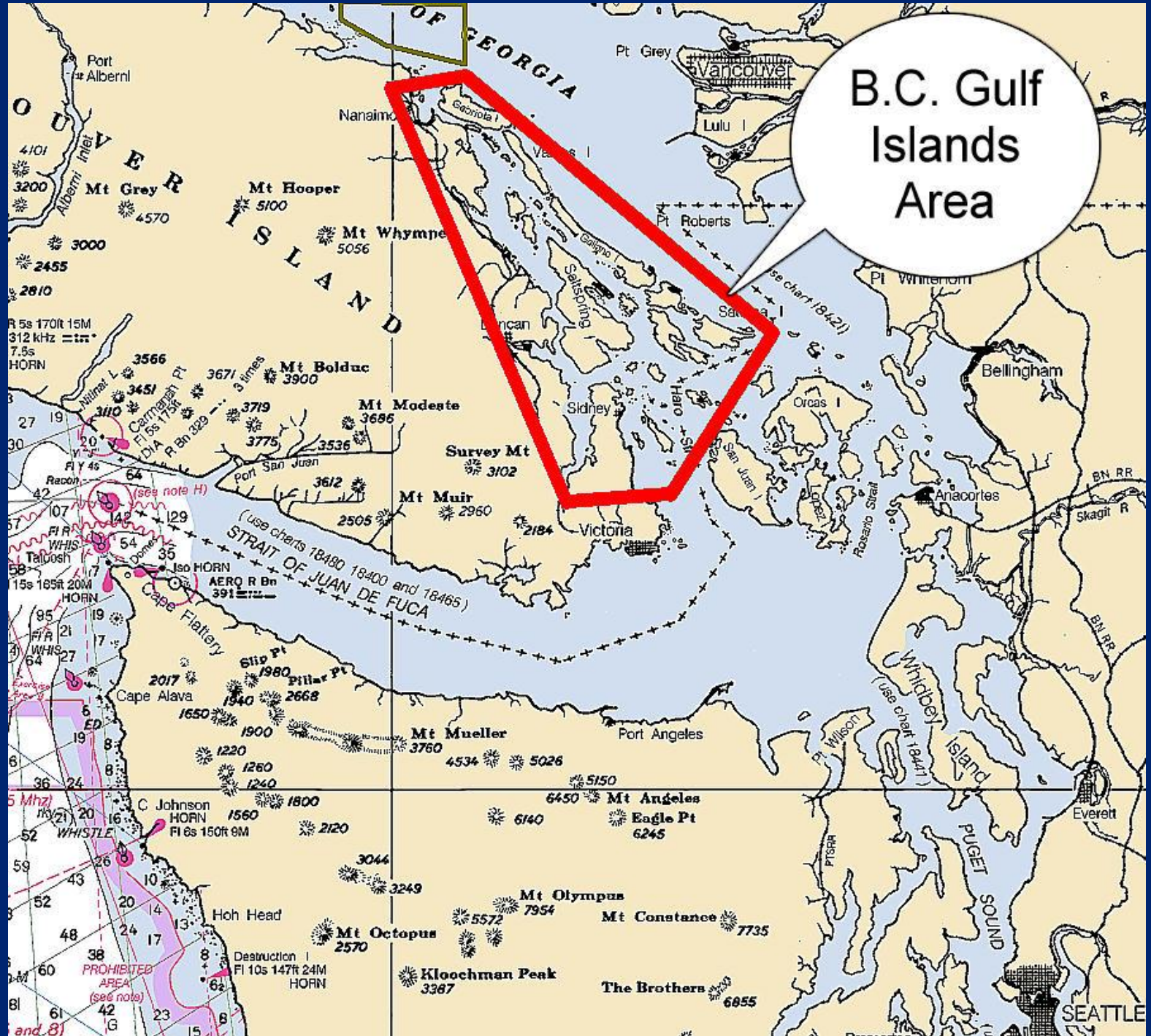
By Carl Tenning



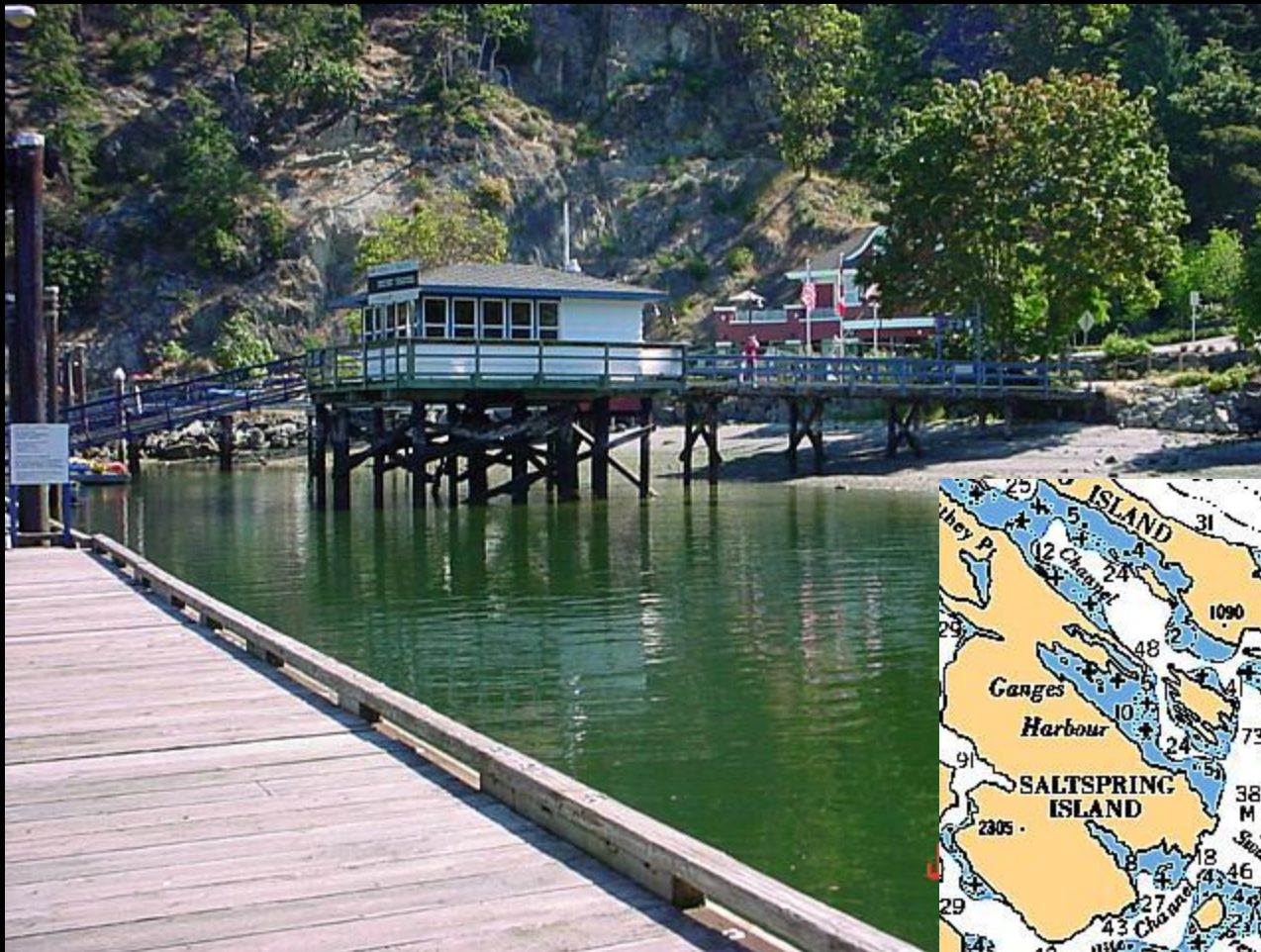
<http://carlten.net>



B.C. Gulf Islands Area

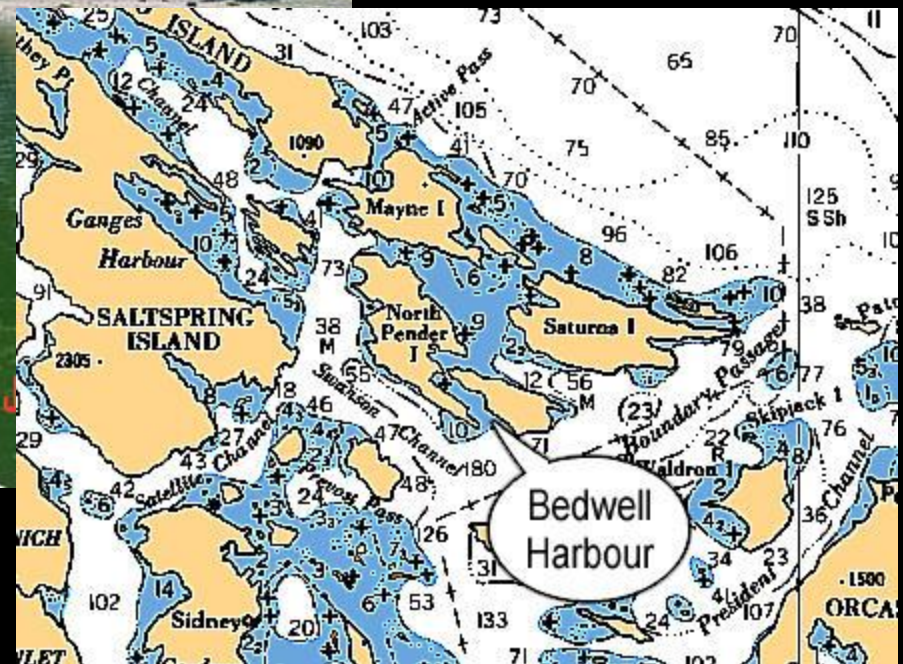


Canadian Port of Entry



Bedwell Harbour
South Pender Island

4.6 nm from
Stuart Island

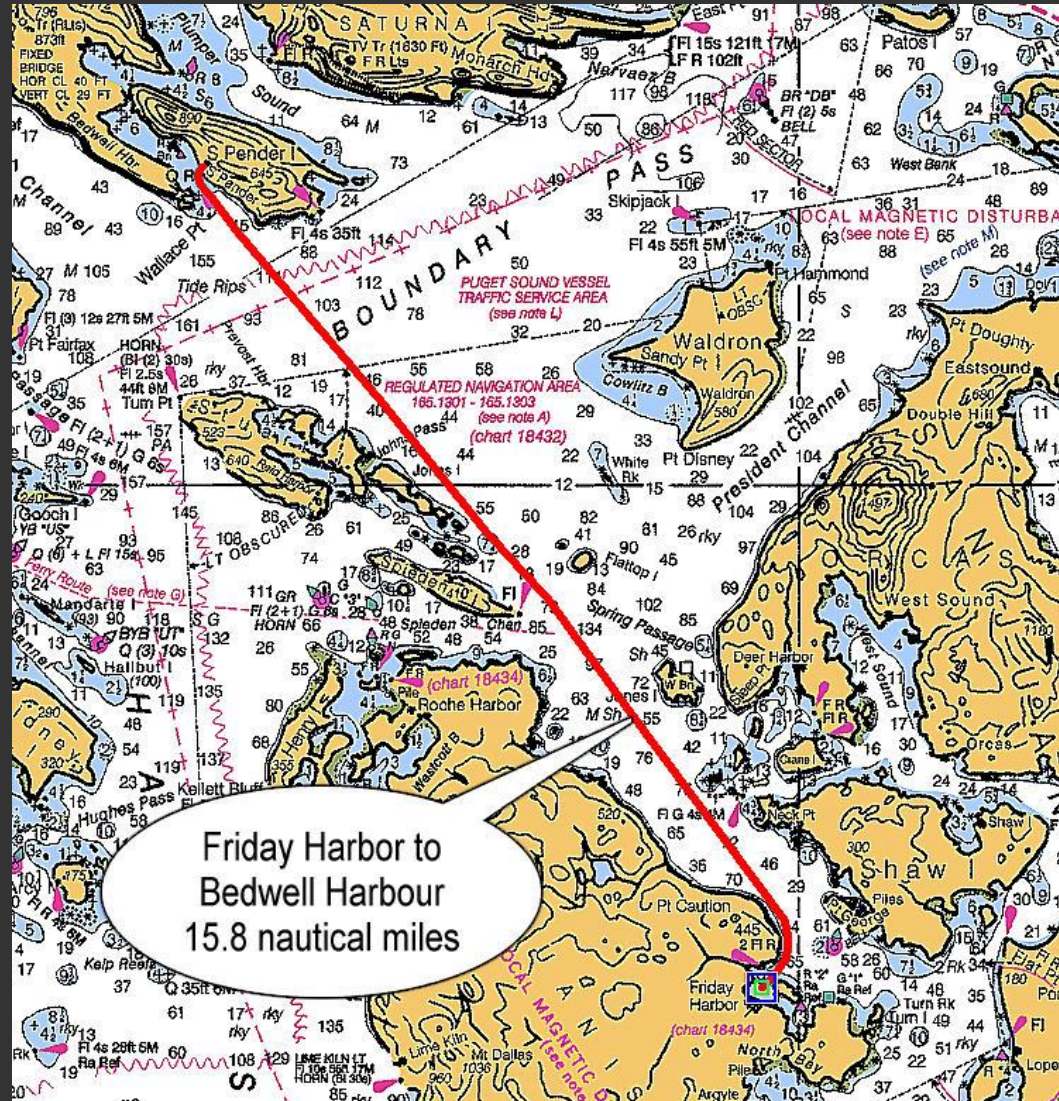


Cruising Distances to Bedwell Harbour Port of Entry

- From Friday Harbor – 15.8 nm
- From Anacortes (Cap Sante Marina) – 31.6 nm
- From Bellingham (Squalicum Harbor) – 33.5 nm
- From Seattle (Shilshole Bay) – 83.8 nm
- From Tacoma (Narrows Marina)– 111.6 nm

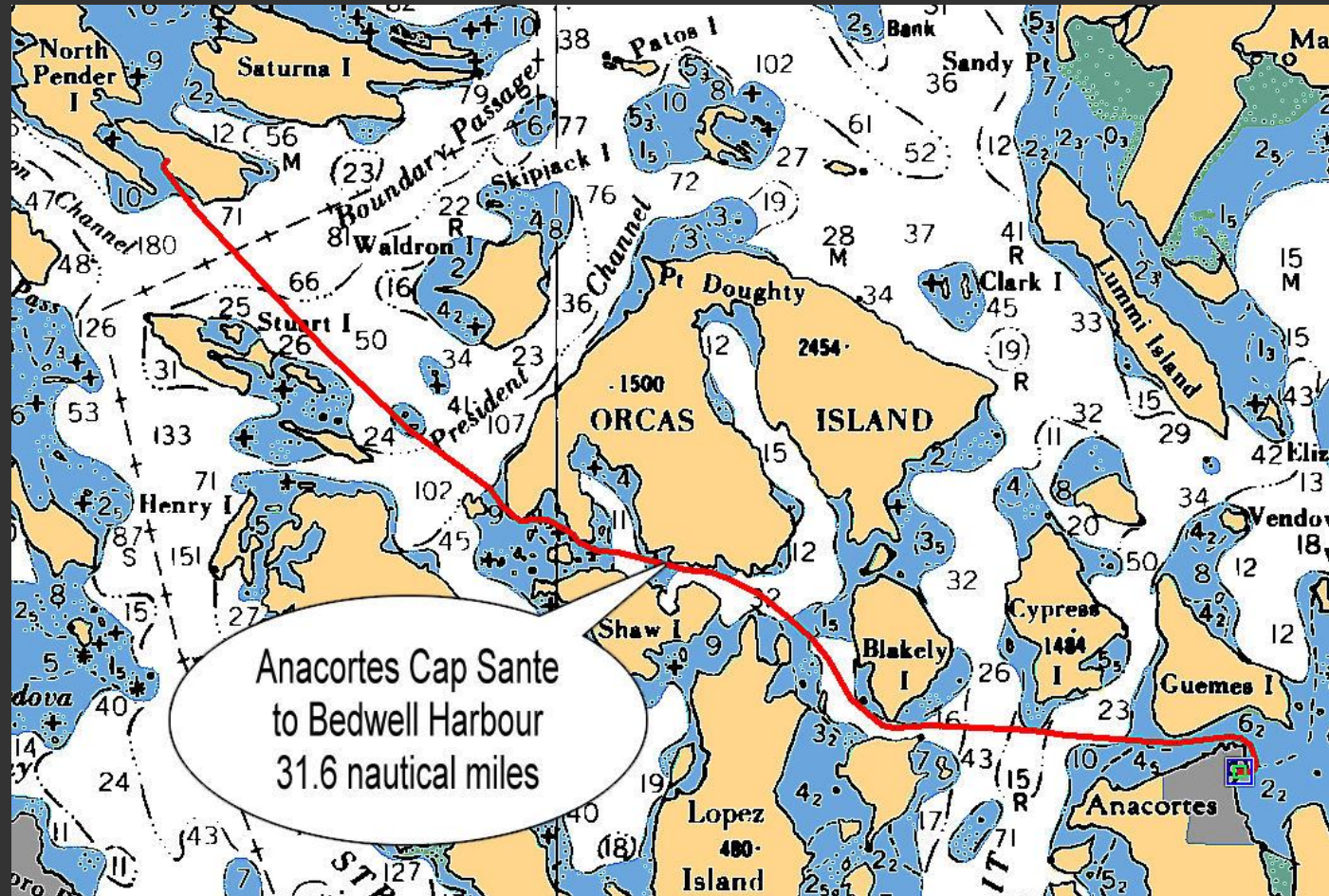
From Friday Harbor

- 15.8 nautical miles
- 2 hours 16 minutes @ 7.0 knots



From Anacortes Cap Sante Boat Haven

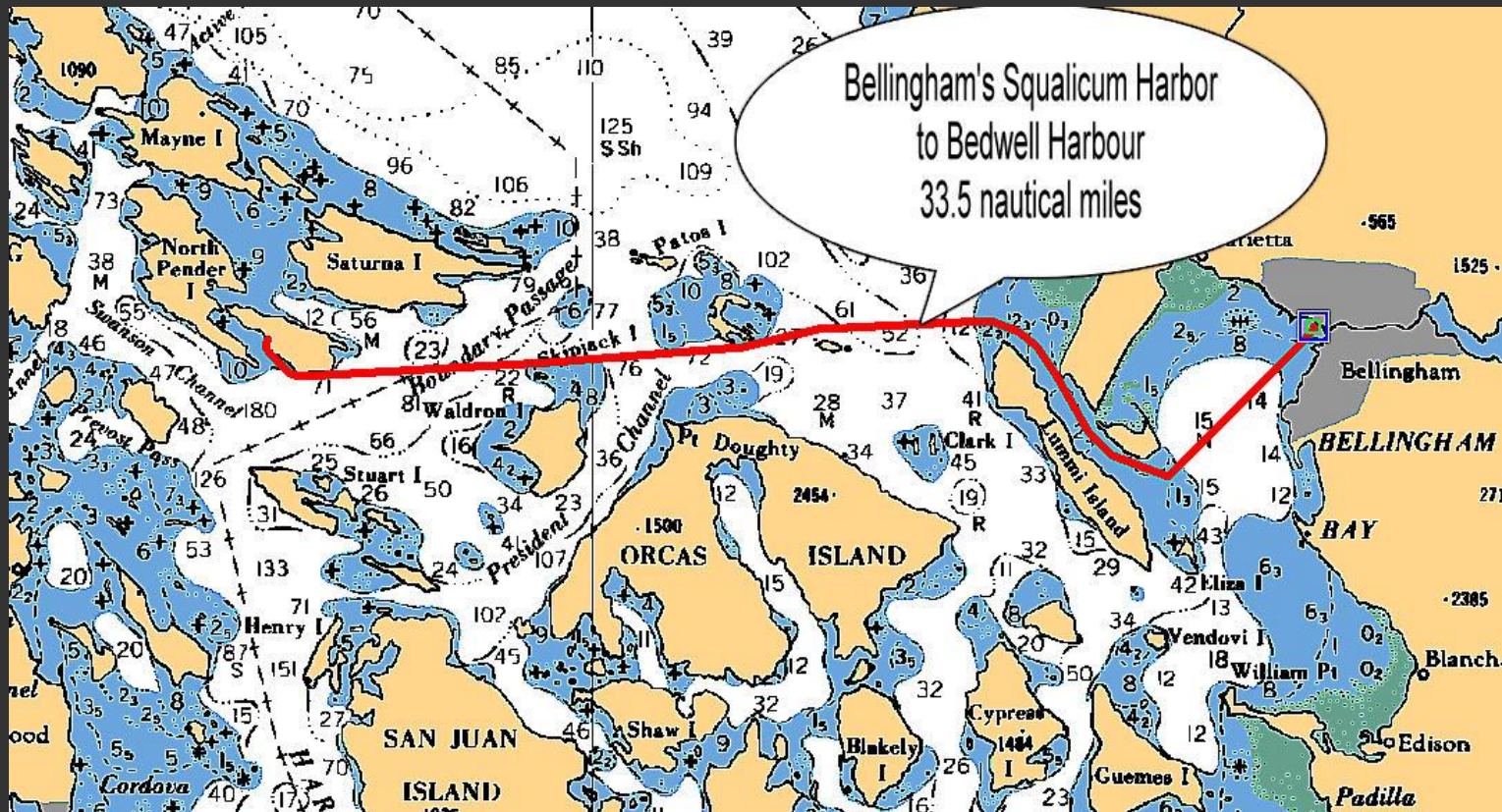
- 31.6 nautical miles
- 4 hours 31 minutes @ 7.0 knots



From Bellingham's Squalicum Harbor to Bedwell Harbour

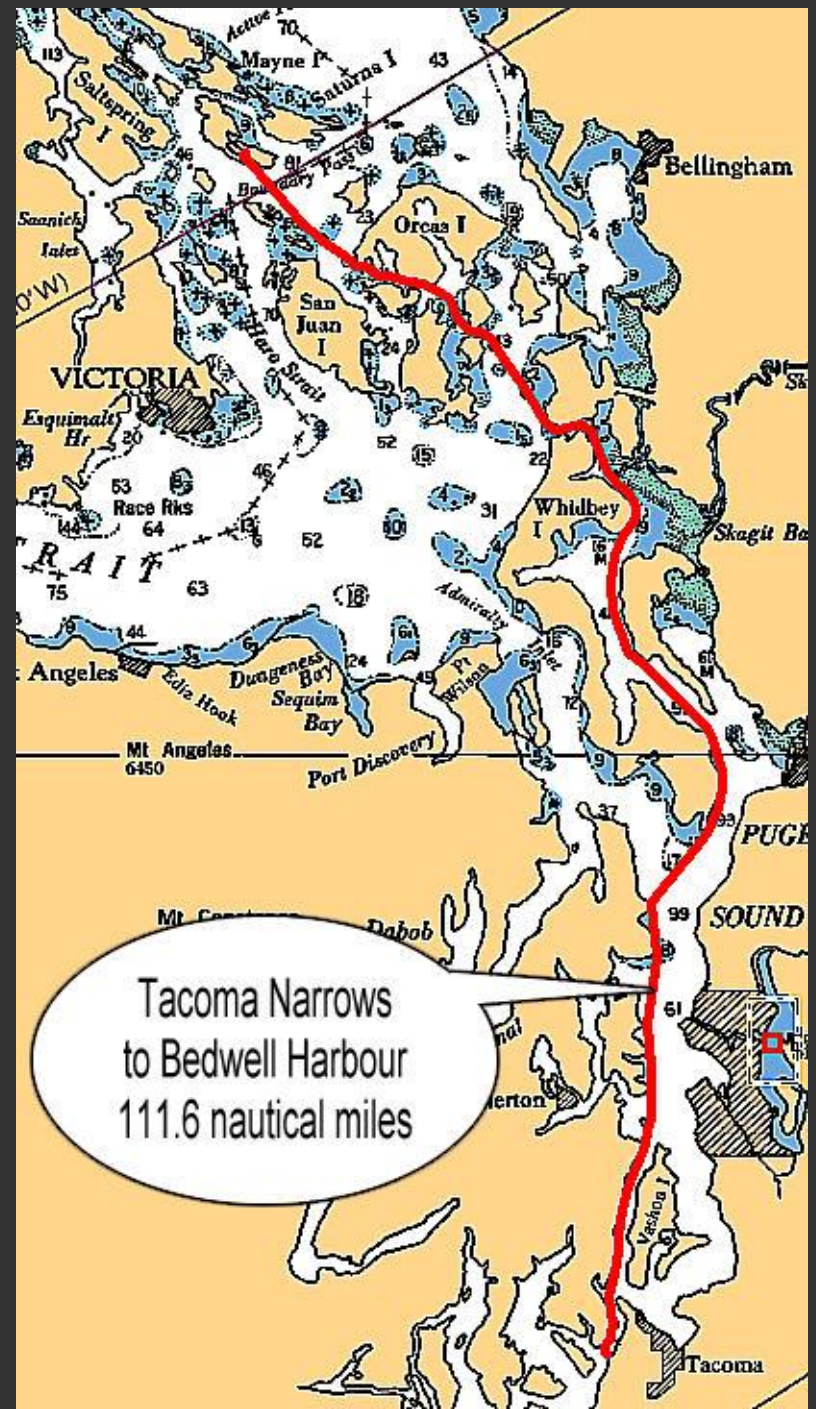
- 33.5 nautical miles

- 4 hours 47 min. @ 7.0 knots



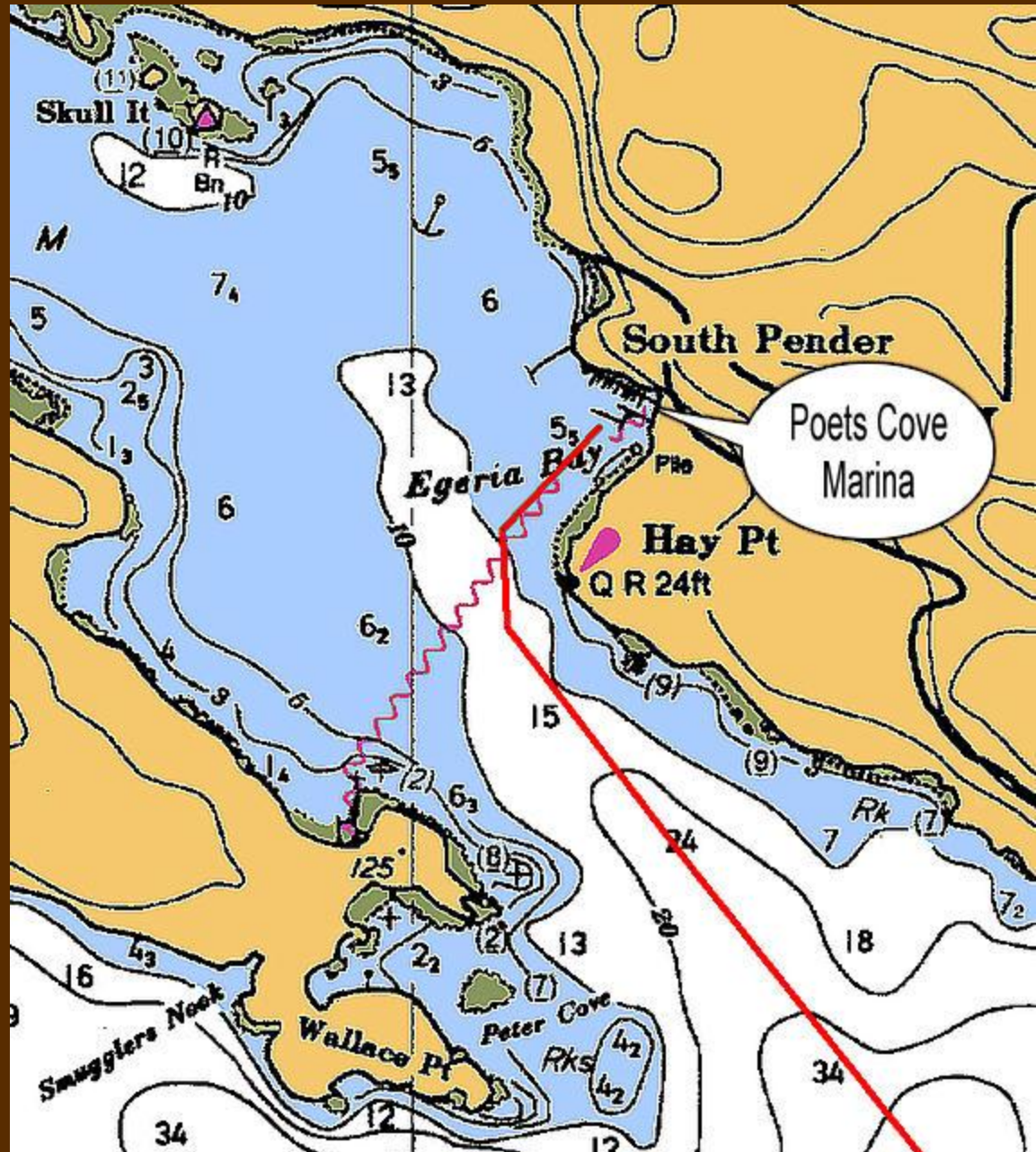
From the Tacoma Narrows

- 111.6 nautical miles
- 15 hours 57 min.
@ 7.0 knots



Friday Harbor to Poets Cove Marina in Bedwell Harbour

- 15.8 nm
- 2 hr 16 minutes @ 7.0 knots



Entering Bedwell Harbour



Destinations We'll Visit in the B.C. Gulf Islands

- **Poets Cove Marina** (in Bedwell Harbour)
- **Port Browning Marina** (on North Pender Island)
- **Winter Cove** (on Saturna Island)
- **Otter Bay Marina** (on North Pender Island)
- **Conover Cove** (on Wallace Island)
- **Telegraph Harbour** (on Thetis Island)
- **Ganges** (on Saltspring Island)
- **Fulford Harbour** (on Saltspring Island)

Poets Cove Marina



Kenmore Air Arriving at Customs



Poets Cove Marina

South Pender Island, in
Bedwell Harbour

Fuel, ice,
power,
water.
Restaurant
and
lodging
on shore.



Poets Cove Marina and Beaumont Marine Park



Poets Cove Hotel and Restaurant



Swimming Pool in Poets Cove Marina



Canadian Navy Training Vessel Arriving in Poets Cove Marina

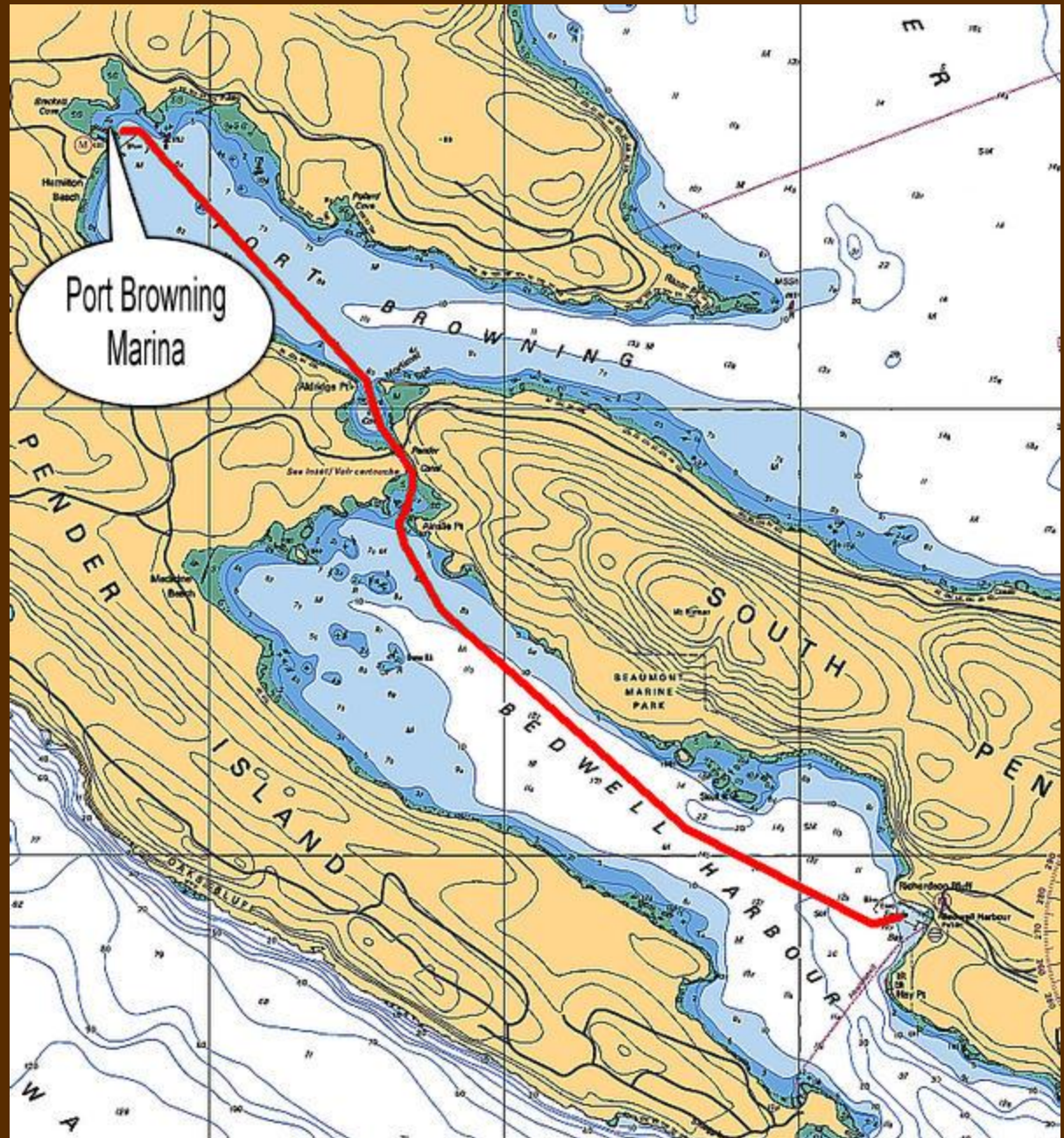


Looking Out of Bedwell Harbour



Poets Cove Marina to Port Browning Marina thru Pender Canal

- 2.6 nautical miles
- 39 minutes @ 4.0 knots



Pender Canal Bridge



Pender Canal Clearance

29 feet 9 inches



Port Browning Marina



Port Browning Marina Restaurant and Pub



Port Browning Marina Swimming Pool



JUN 19 2005

• Port Browning Marina



Restaurant,
Pub, ice,
liquor,
camping
and
swimming.

Power on
docks, but
water is
limited.

North Pender Island, in Port Browning, thru Pender Canal

Saturna Island

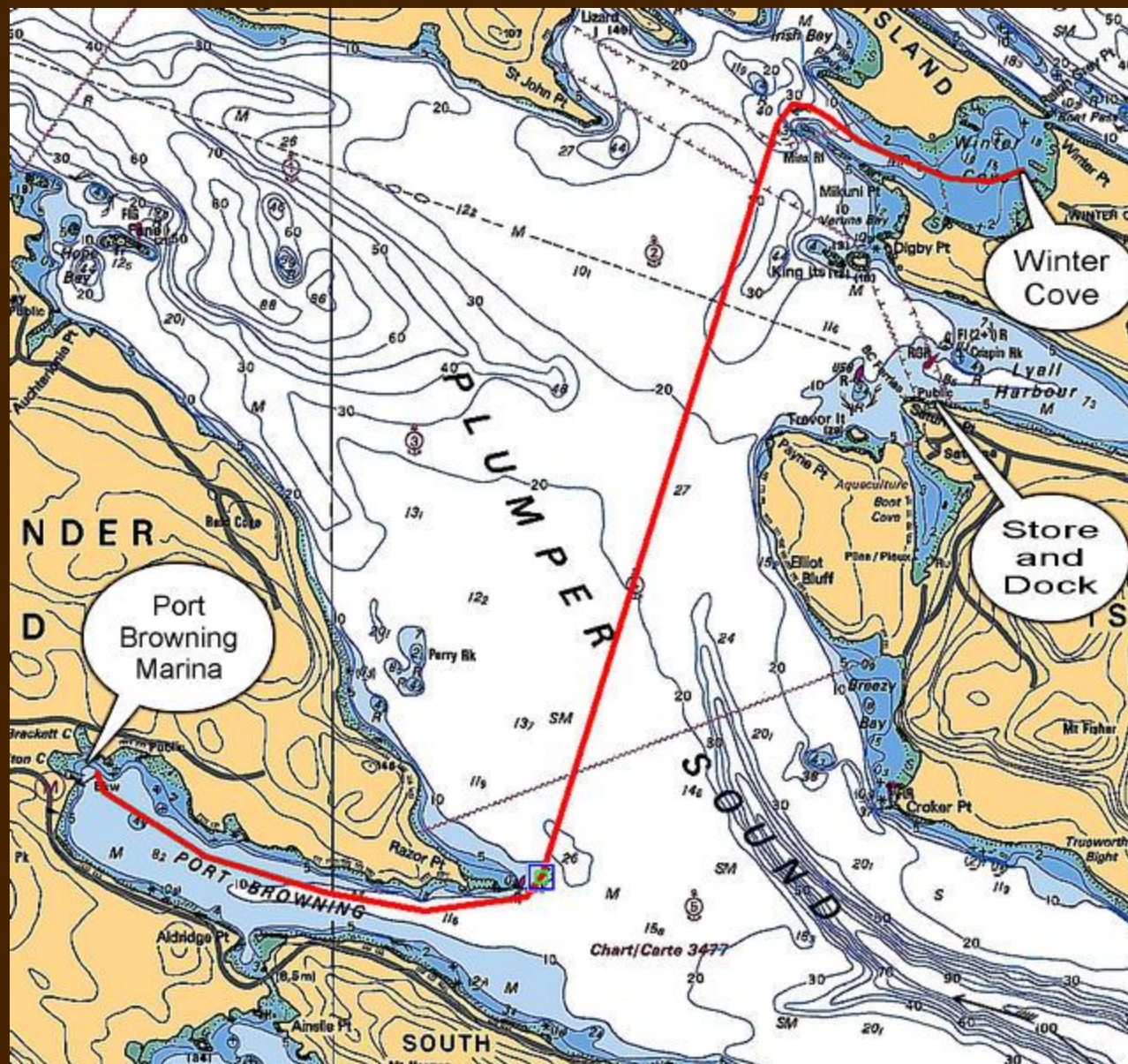
• Winter Cove

• Lyall Harbour

- Port Browning Marina to Winter Cove

- 5.4 nm

- 46 minutes @ 7.0 knots



Saturna Island Marine Park in Winter Cove



Traversing Boat Pass

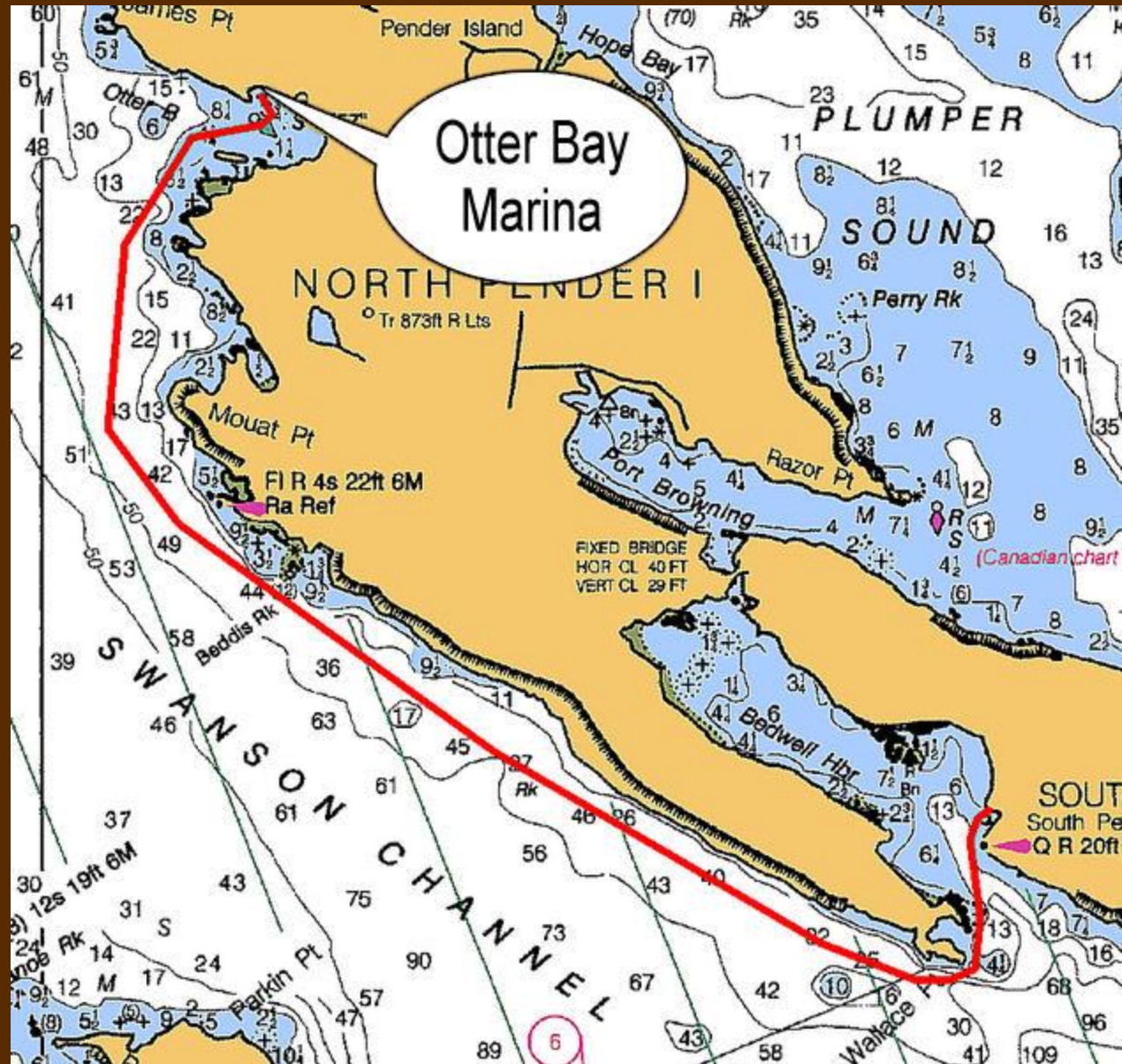


Unusual Boat in Winter Cove



Poets Cove to Otter Bay Marina

- On Swanson Channel
- 7.2 nm
- One hour 2 minutes @ 7.0 knots



Otter Bay Marina North Pender Island



COUNTRY STORE

CAPPUCCINO ON DECK

SCOOTERS & BICYCLES

KAYAKS

OTTER GALLERY

JUN 26 2005

Otter Bay Flag Display and Lookout



Otter Bay Marina



In Otter Bay Marina



In Otter Bay Marina



Pool in Otter Bay Marina



Otter Bay Store



Barbecue in Otter Bay Marina

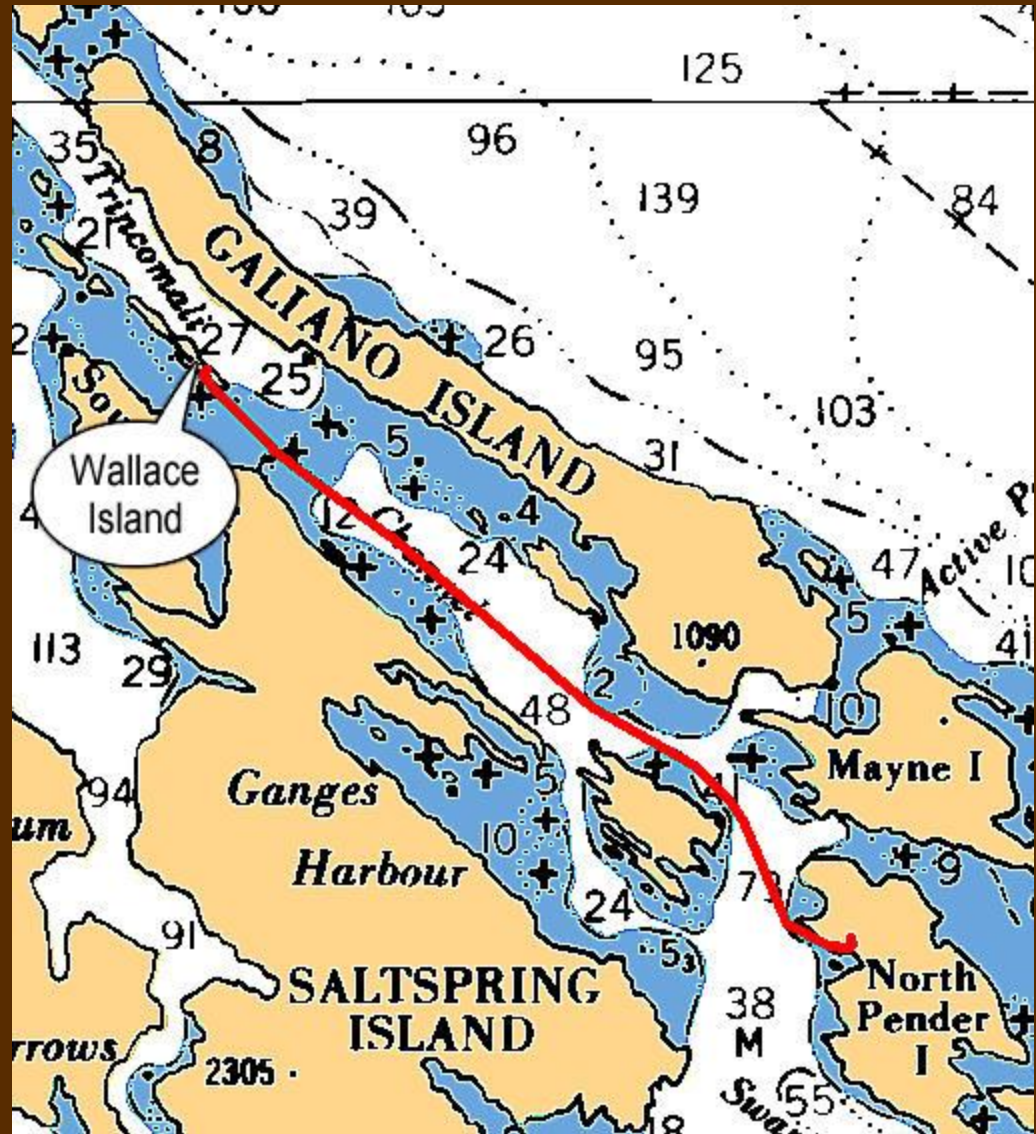


Otter Bay Sing Along



Otter Bay to Conover Cove

- On Wallace Island
- 13.0 nm
- 1 hour 52 min.
@ 7.0 knots



- Conover Cove Provincial Marine Park,
Wallace Island



8.6 nm from
Telegraph Harbour

1hr 13min
@ 7.0 knots

11.6 nm from
Ganges

1hr 39min
@ 7.0 knots

• Conover Cove



Good stopover
point
for awaiting
slack current
in Dodd
Narrows

Swimmers in Conover Cove



- Shore Tie in Conover Cove



Steel rings
for shore
tie in north
cove.

- Doing a Stern-to Tie



Stern-to Tie Return



- Signpost in Conover Cove



- The only car on Wallace Island



- Shingle Hut in Conover Cove



- Picnic Area in Conover Cove

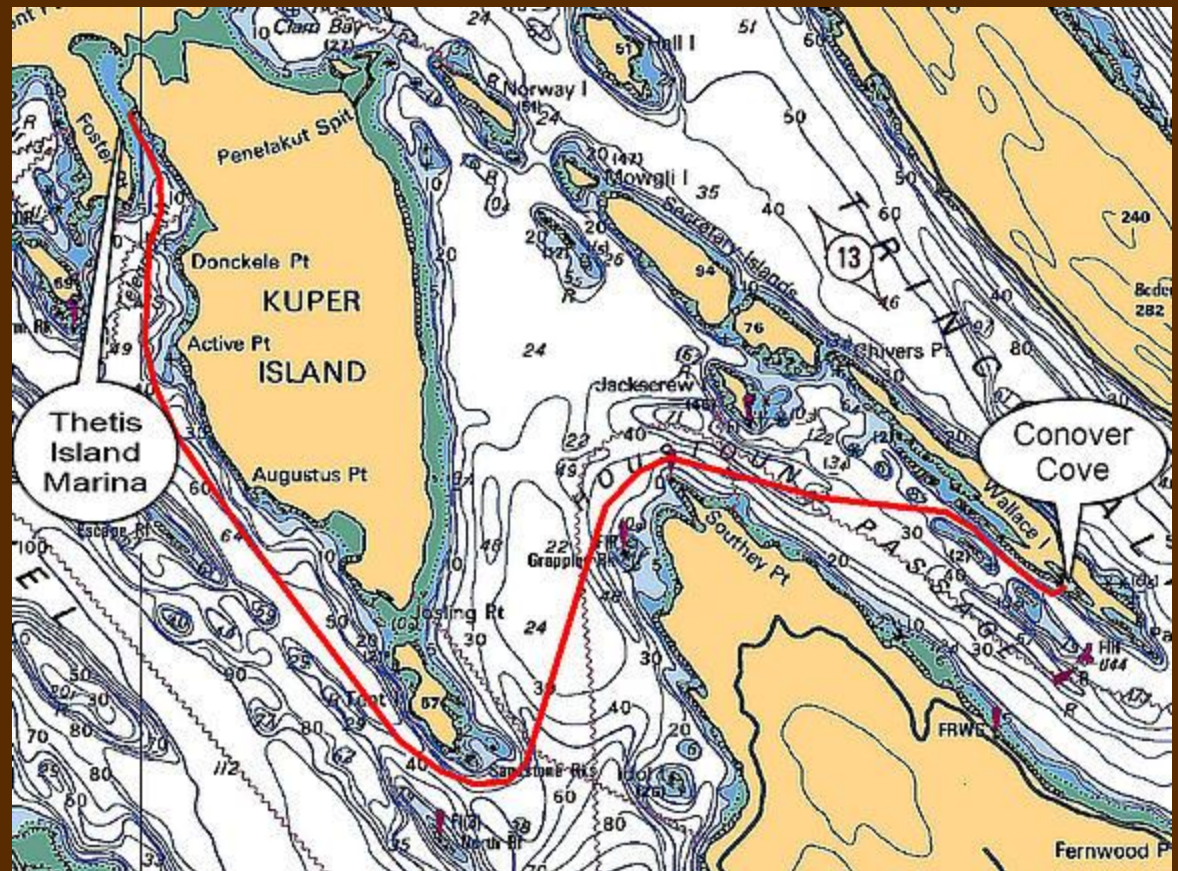




- Water Supply on Wallace Island

Conover Cove to Thetis Island Marina

- 8.6 nm
- One hour
14 minutes
@ 7.0
knots



• Thetis Island Marina in Telegraph Harbour

3.8 nm from
Chemainus –
33min
@ 7.0 knots

Fuel, power,
garbage.

Limited water.

Restaurant
and Pub.

Best
fish &
chips,
anywhere.



Thetis Island Restaurant and Pub



Bar in Thetis Island Pub



Thetis Island Pub



Thetis Island Marina



Thetis Island Seaplane Service



Boeing 737 on Thetis Island

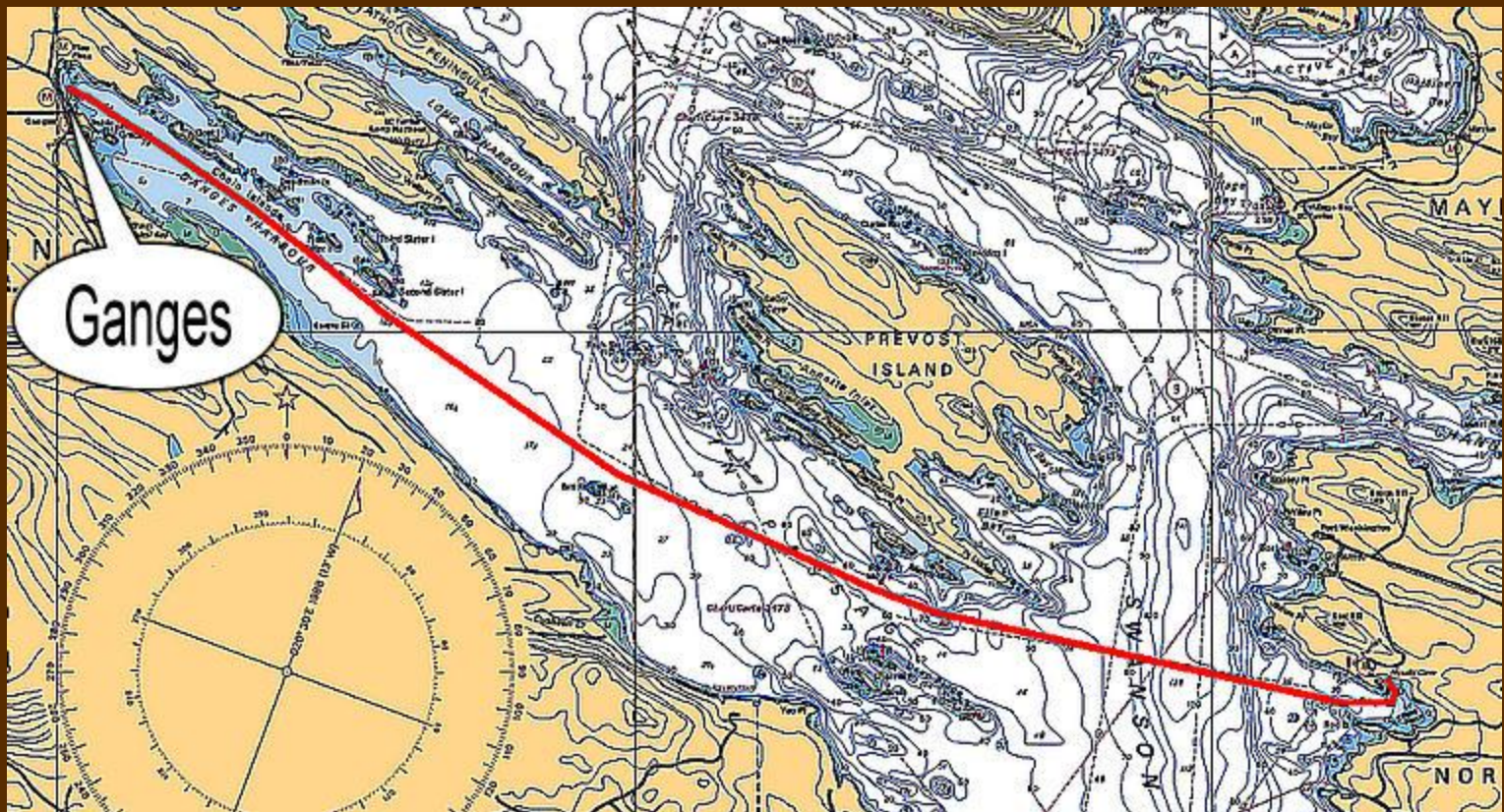


Inspecting the 737



Otter Bay to Ganges

- On Saltspring Island
- 8.6 nm
- One hour 14 min.
@ 7.0 knots



- **Ganges on Saltspring Island**

13.8 nm from Bedwell Harbour
1hr 58min @ 7.0 knots

**Water,
power,
and
laundry**



**Good
fish
market
ashore.
Groceries
and
supplies.**

• Ganges Saturday Market

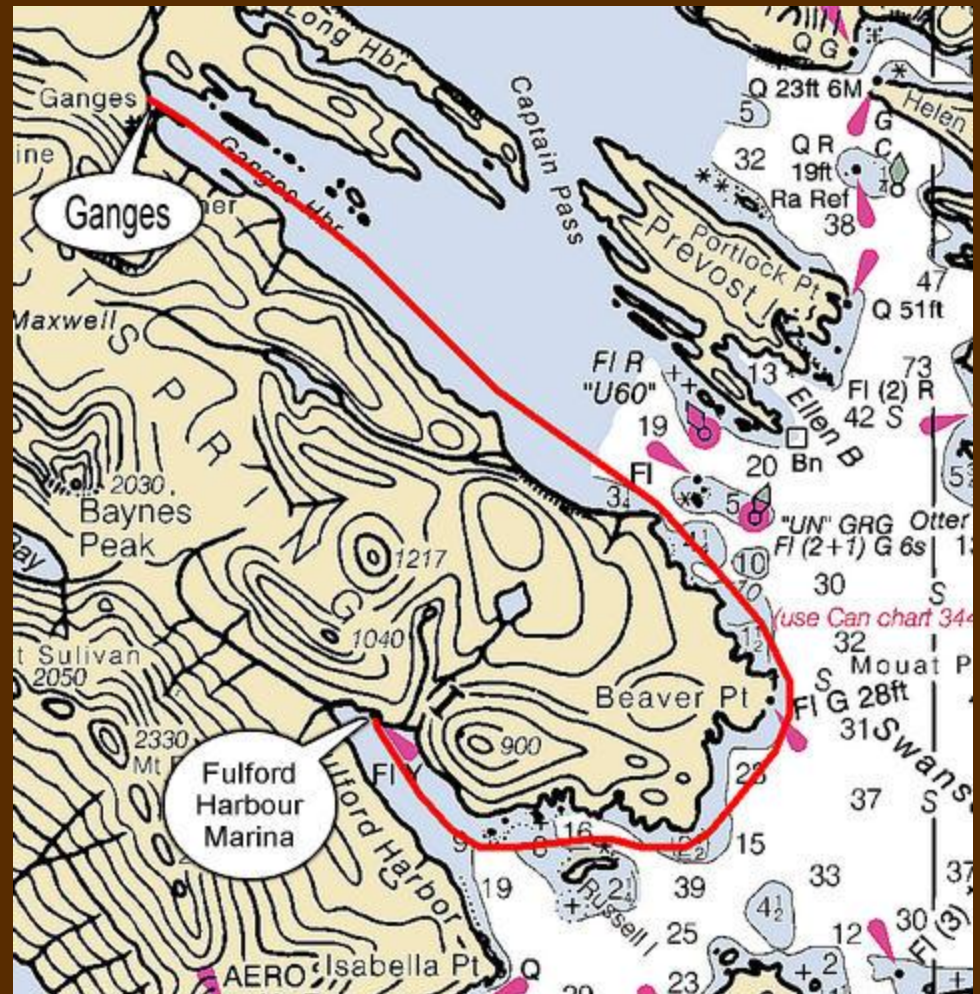


- Ganges Harbour



Ganges to Fulford Harbour

- On Saltspring Island
- 12.2 nm
- One hour 45 minutes @ 7.0 knots



City Dock in Fulford Harbour



Fulford Harbour Public Moorage



Fulford Harbour



Fulford Harbour



Fulford Harbour Marina



Fulford Harbour Marina



Fulford Harbour Marina

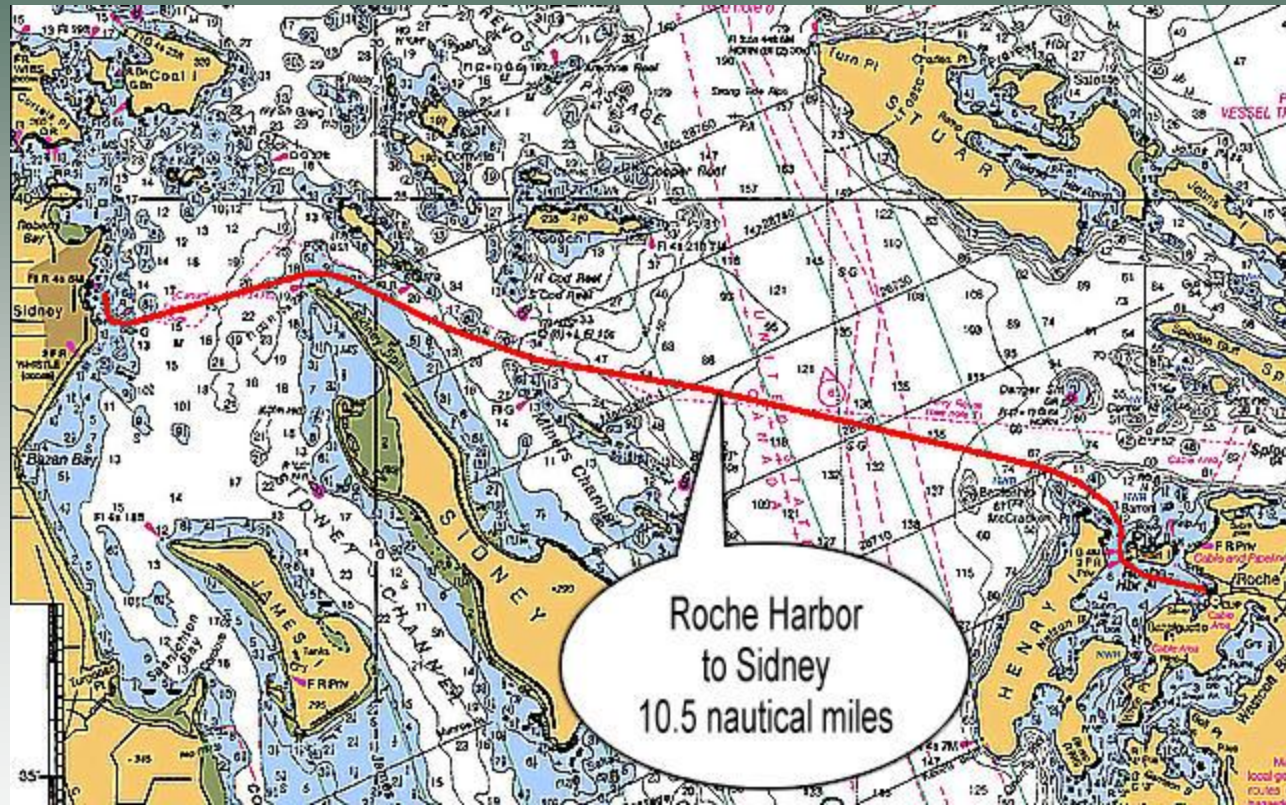


Destinations We'll Visit on the Lower Inside Vancouver Island

- Sidney
- Tsehum Harbour
- Cowichan Bay
- Maple Bay
- Chemainus
- Ladysmith
- Nanaimo

Roche Harbor to Sidney

- On the Saanach Peninsula
- 13.5 nm north of Victoria
- 10.5 nautical miles from Roche Harbor
- One hour 30 minutes @ 7.0 knots

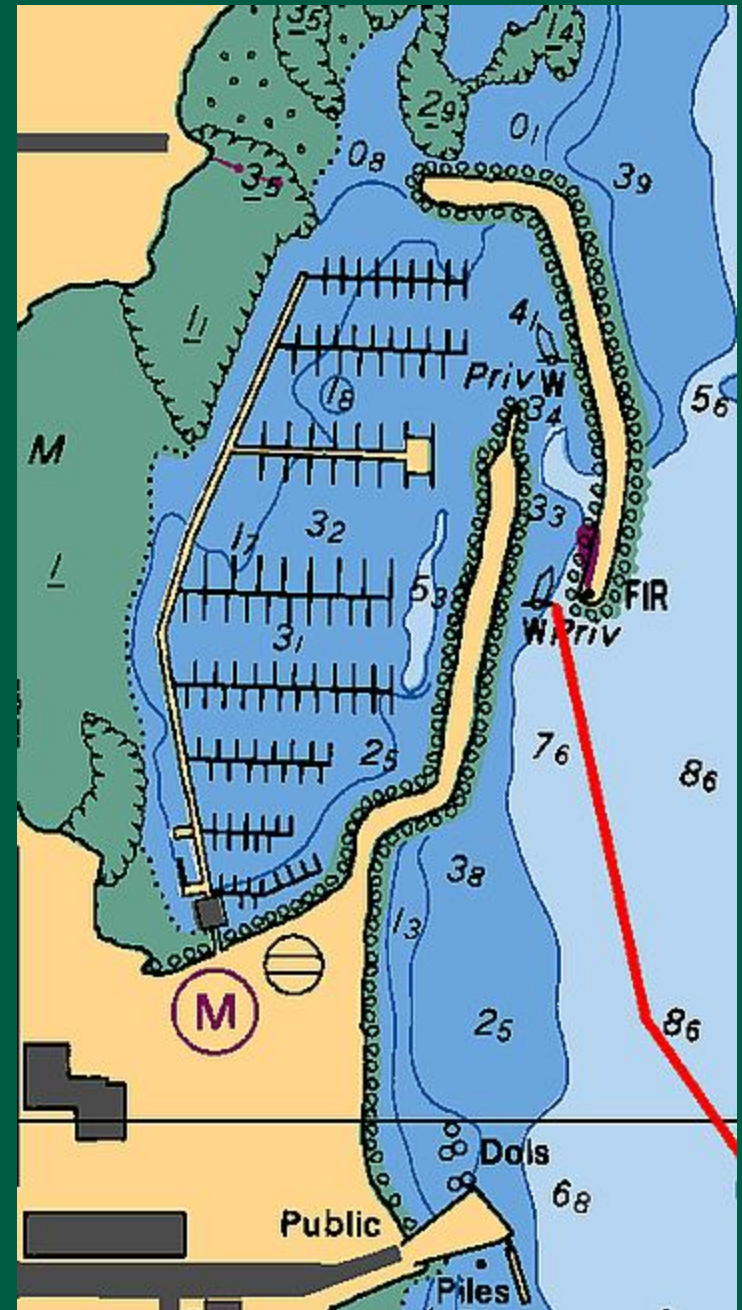


- Sidney is also a Port of Entry

Port of Sidney Marina



10.5 nautical miles from
Roche Harbor.
One hour 30 minutes
@ 7.0 knots



Port of Sidney Marina





Fisherman Statue in downtown Sidney

Flower Baskets in Port of Sidney Marina



Rescue Boat in Port of Sidney Marina



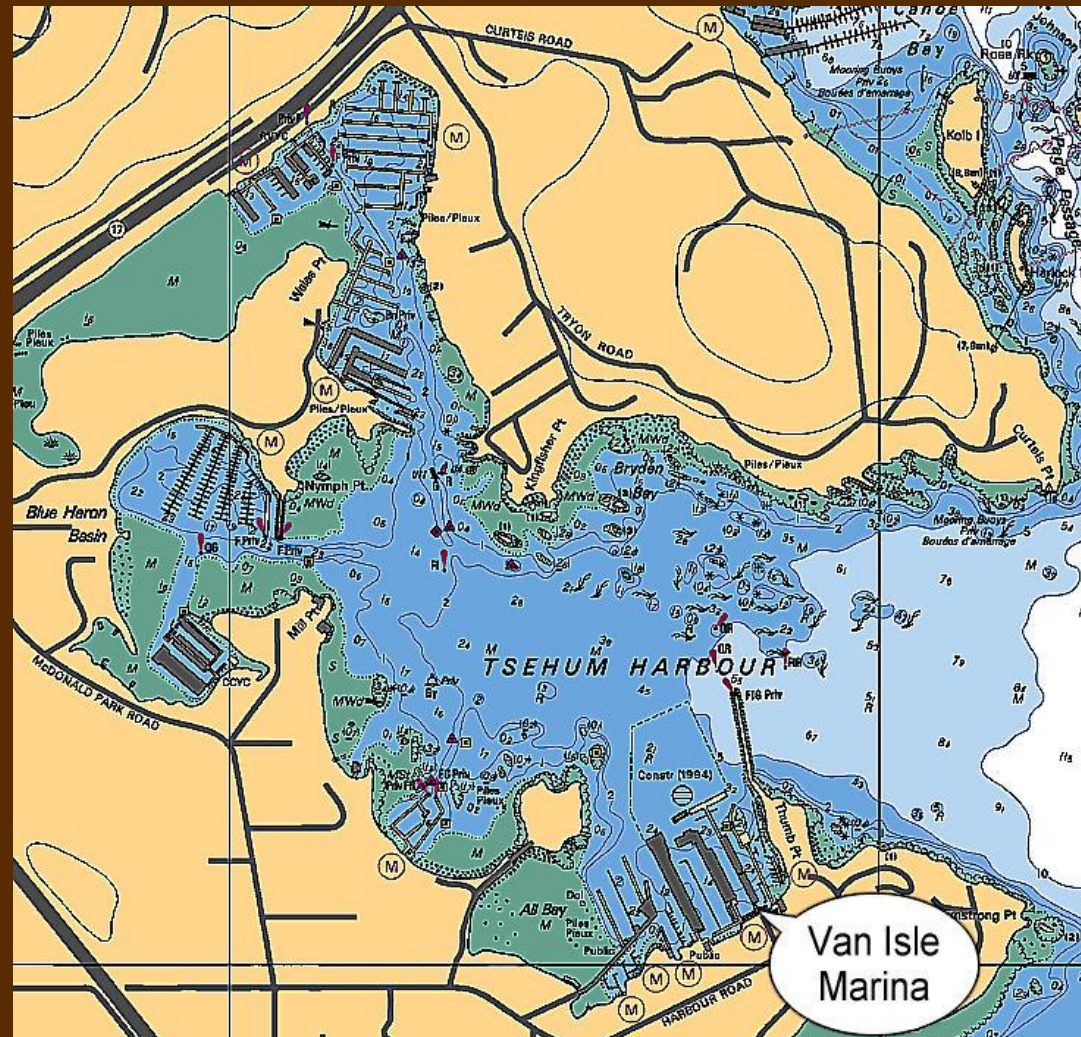
Washington State Ferry Leaving Sidney



JUL 6 2004

Sidney to Tsehum Harbour

- On the Saanich Peninsula
- 1.6 nautical miles
- 14 minutes @ 7.0 knots



Welcome to Tsehum Harbour



Tsehum Harbour Public Dock



Van Isle Marina in Tsehum Harbour

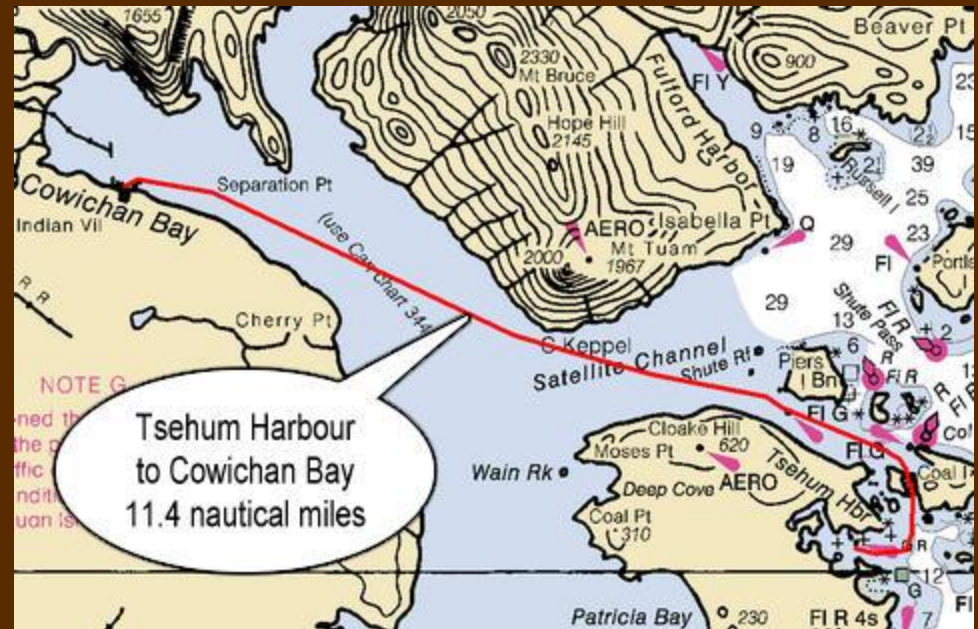


Waterfront Dining in Tsehum Harbour



Tsehum Harbour to Cowichan Bay

- On Satellite Channel
- 11.4 nautical miles
- One hour 38 minutes @ 7.0 knots





Cowichan Bay
Fishermen's Wharf



Service
Information
by telephone
or in person



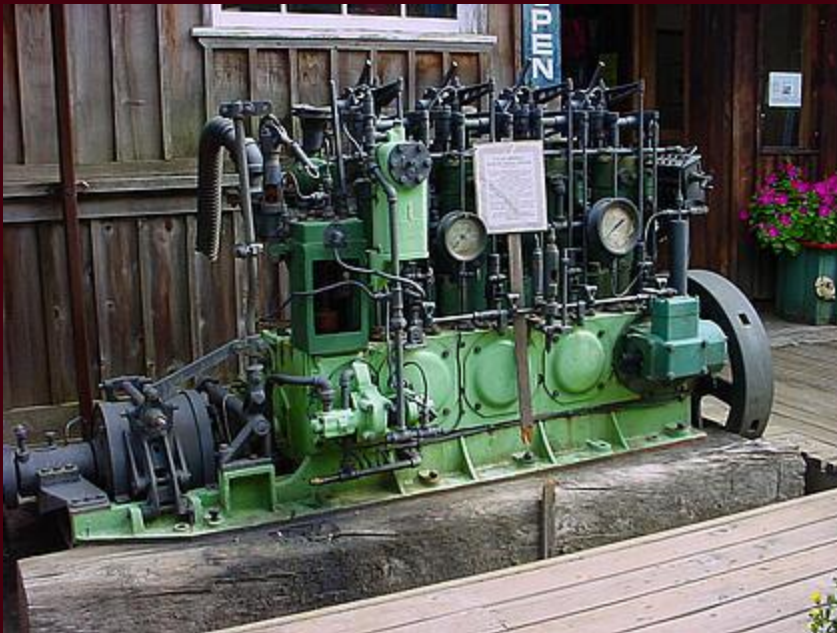


In Cowichan Bay



In Cowichan Bay

Bread Bakery



Maritime Museum



Restaurants in Cowichan Bay



Cowichan Bay to Maple Bay Marina

- Thru Sansum Narrows
- 8.0 nautical miles
- One hour 9 minutes @ 7.0 knots



• Maple Bay Marina, on Vancouver Island

21.0 nm from Bedwell Harbour – 3hr @ 7.0 knots

Thru
Sansum
Narrows to
Birds Eye
Cove, in
Maple
Bay

Water,
power,
fuel,
Pub,
restaurant,
ice and
marine
supplies.



Maple Bay Marina Pub and Restaurant



Maple Bay Pub



In Maple Bay Marina



Colorful Maple Bay Marina





- Haul-out in Maple Bay



- Debris Around Prop Shaft



Tugboat Rendezvous in Maple Bay Marina



Tugboat Rendezvous in Maple Bay Marina





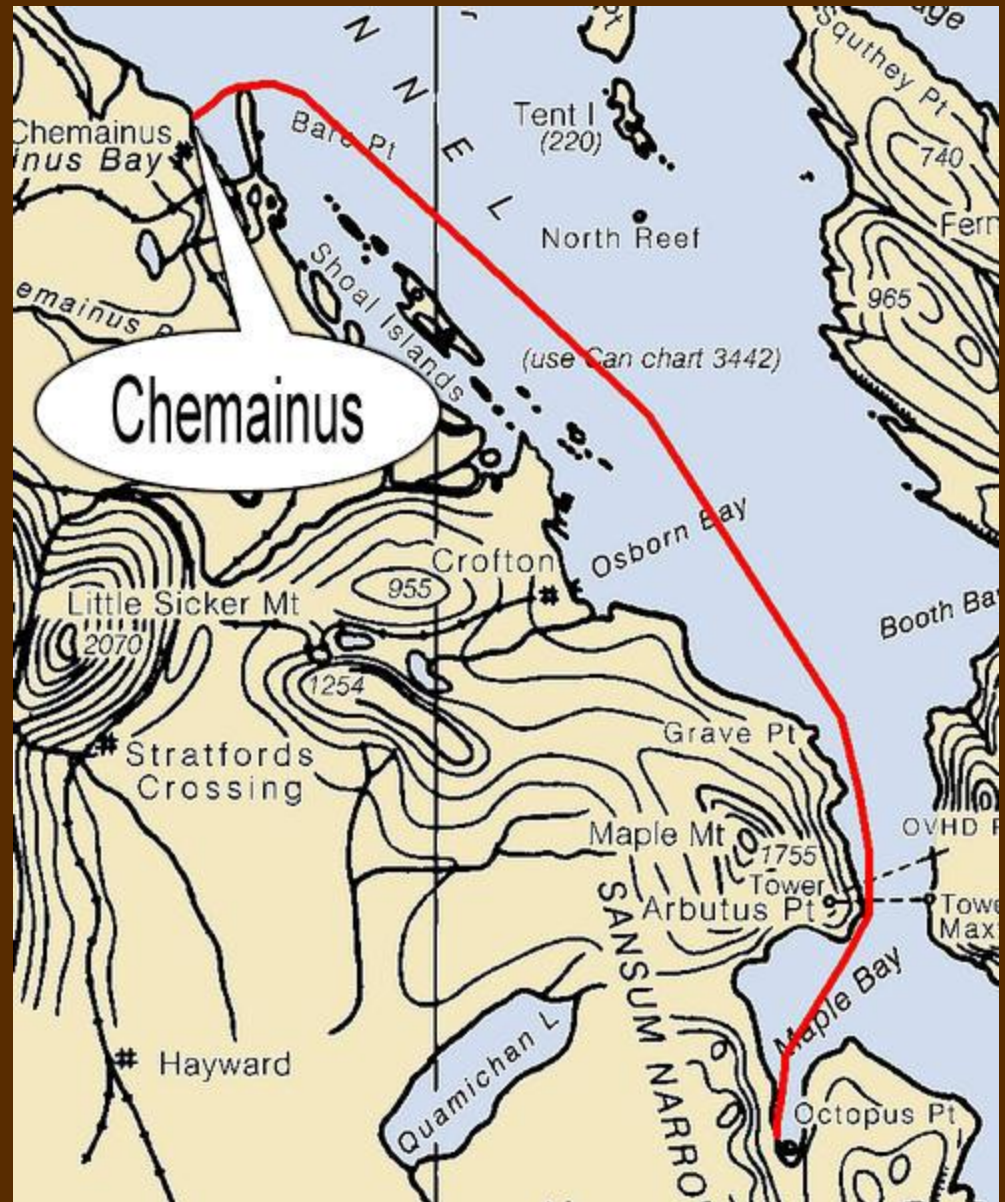
Tugboat Rendezvous



Tugboat Rendezvous

Maple Bay to Chemainus

- 10.8 nm
- One hour
32 minutes
@ 7.0 knots



- **Chemainus**

**City of
murals**

10.8 nm from Maple Bay
1hr 33min @ 7.0 knots



Short walk to grocery store with ice. Abundant water and power on dock.

Chemainus Harbour



Chemainus Murals



Chemainus Murals



Chemainus Murals



JUN 24 2005

Chemainus Murals



Chemainus Statue



Chemainus Performing Arts

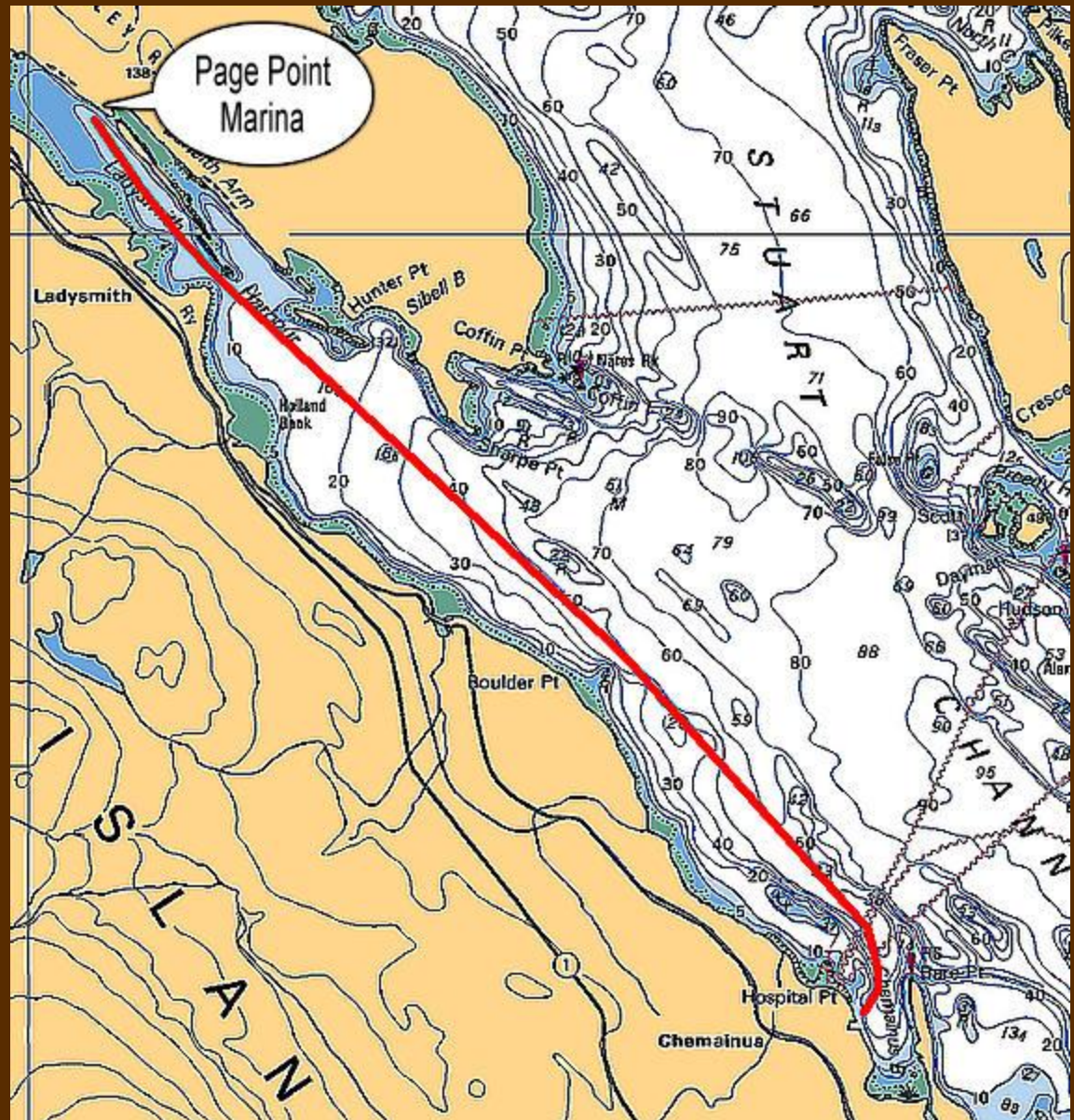


Chemainus Ferry



Chemainus to Ladysmith

- In Ladysmith Harbour
- 6.9 nm
- 59 minutes @ 7.0 knots



Ladysmith



Ladysmith Mill



Ladysmith Mill



Ladysmith Mill



Page Point Marina in Ladysmith Harbour



Page Point Fuel Dock in Ladysmith Harbour

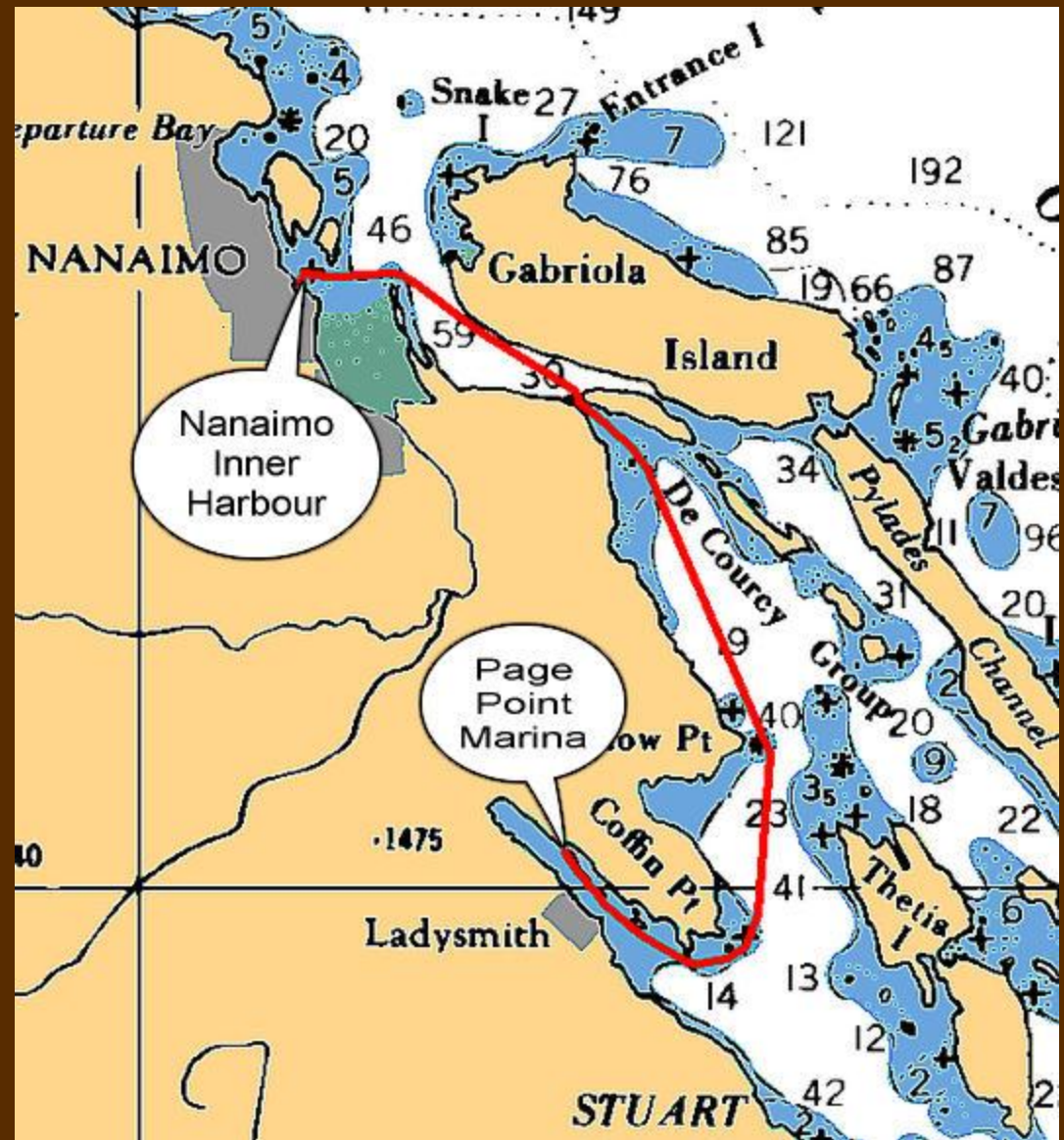


Russian Sailboat in Ladysmith Harbour



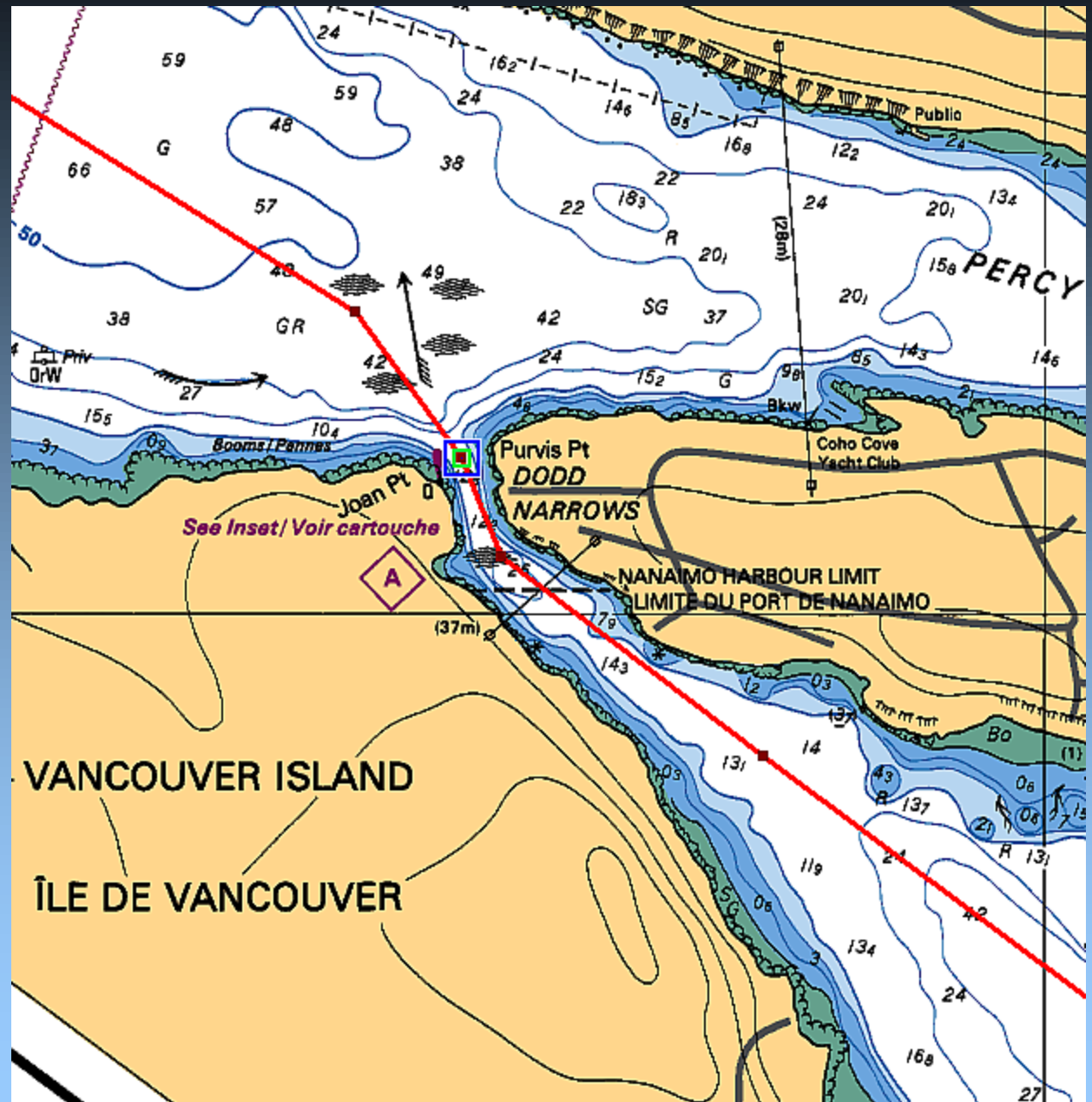
Ladysmith to Nanaimo

- 19.2 nm
- 2 hours 45 minutes
@7.0 knots



• Thru Dodd Narrows

16.4 nm from
Conover Cove
2hr 20min
@ 7.0 knots



Usually a
number of
boats awaiting
slack current

Approaching Nanaimo



JUN 21 2005

• Entrance to Nanaimo Inner Harbour

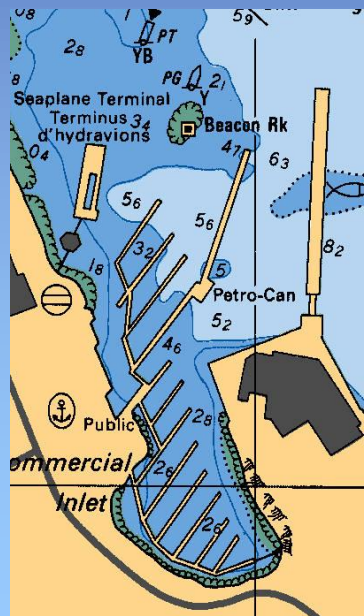
5.3 nm from
Dodd Narrows
45min @
7.0 knots

On the east
side of
Vancouver
Island, across
the Strait of
Georgia from
Vancouver,
B.C.



• Nanaimo Inner Harbour

Water, power,
ice, showers,
laundry. Close
to shopping.



Protection Island Ferry Terminal



Protection Island Foot Ferry





Nanaimo Condominiums

Nanaimo Inner Harbour



Inner Harbour Fish & Chips



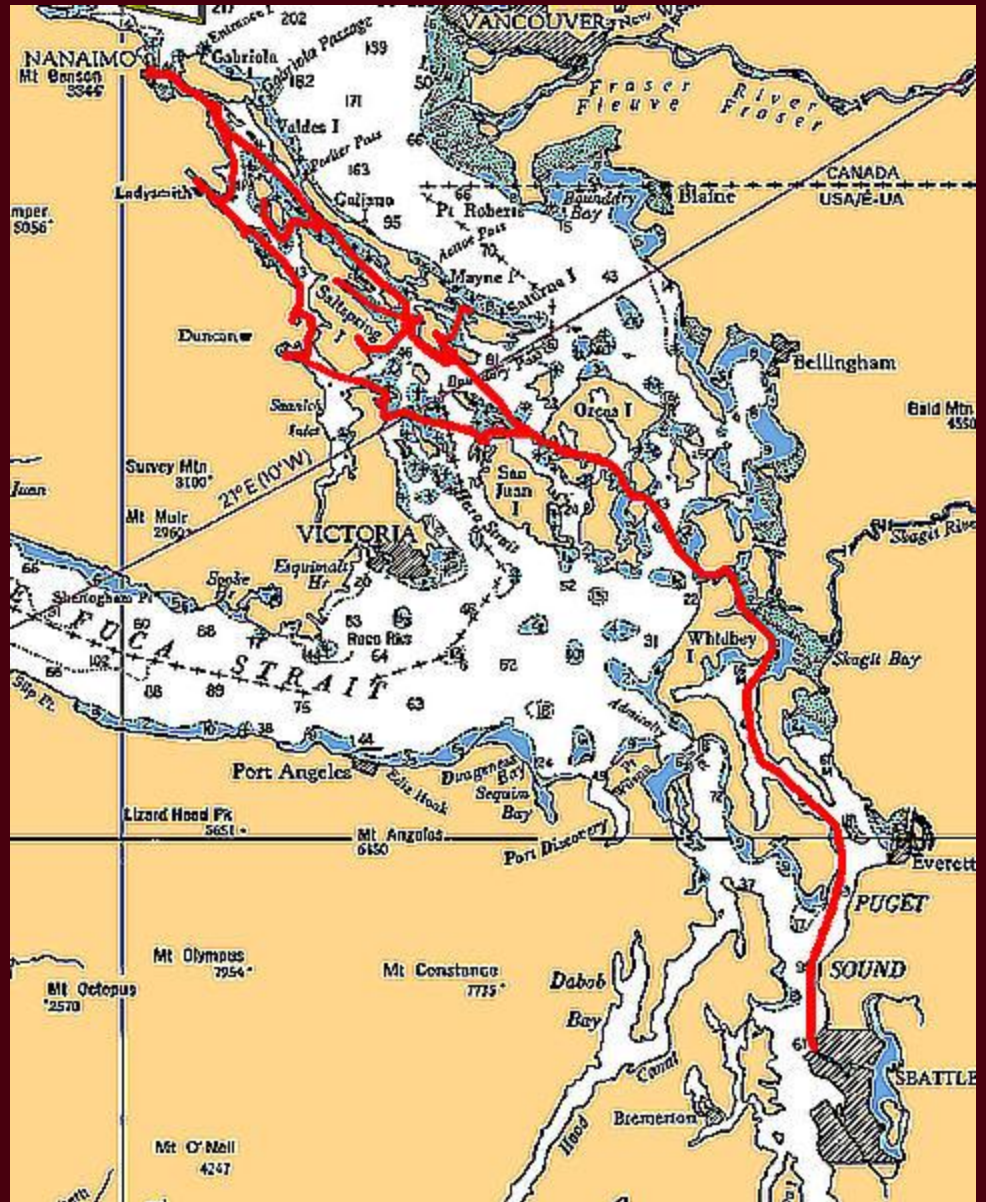
Inner Harbour Seafood



B.C. Ferries in Departure Bay



- Approximate Total Round Trip Cruise Distance From Seattle 307.4 nm



- Thanks for the memories,

Carl Tenning



QE  *Too*

<http://carlten.net>

