

Cruising South Sound

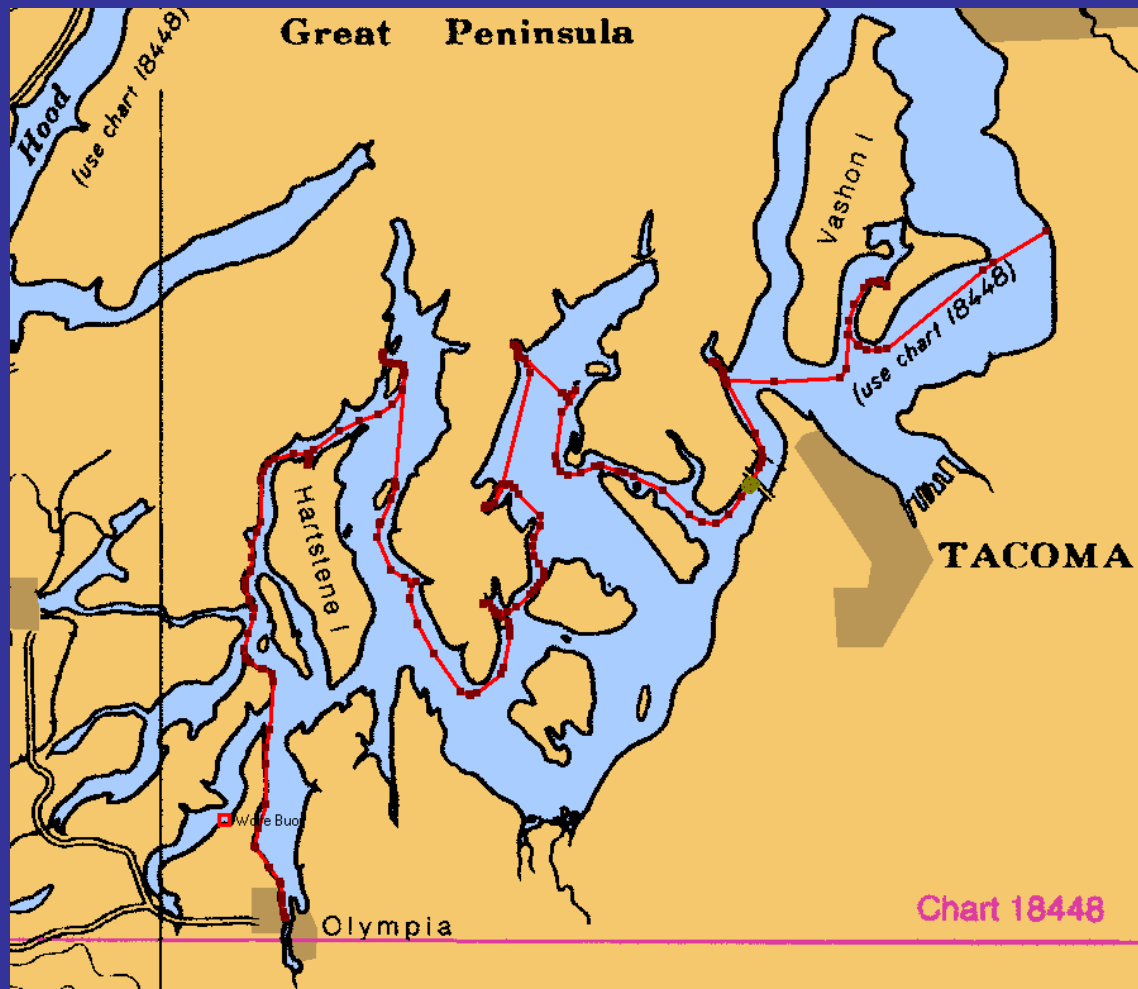
by Carl Tenning



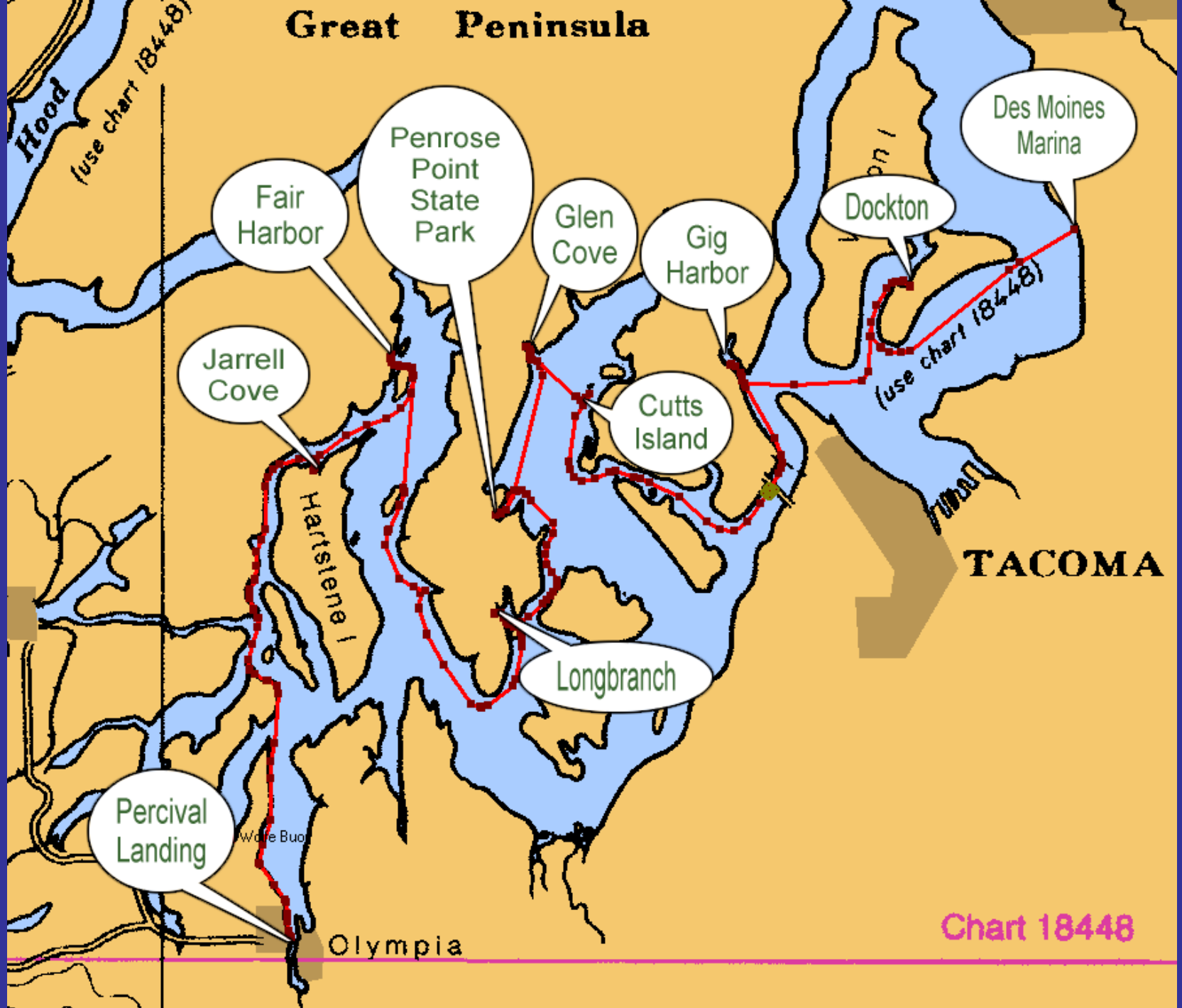
<http://carlten.tripod.com>

Cruising South Sound

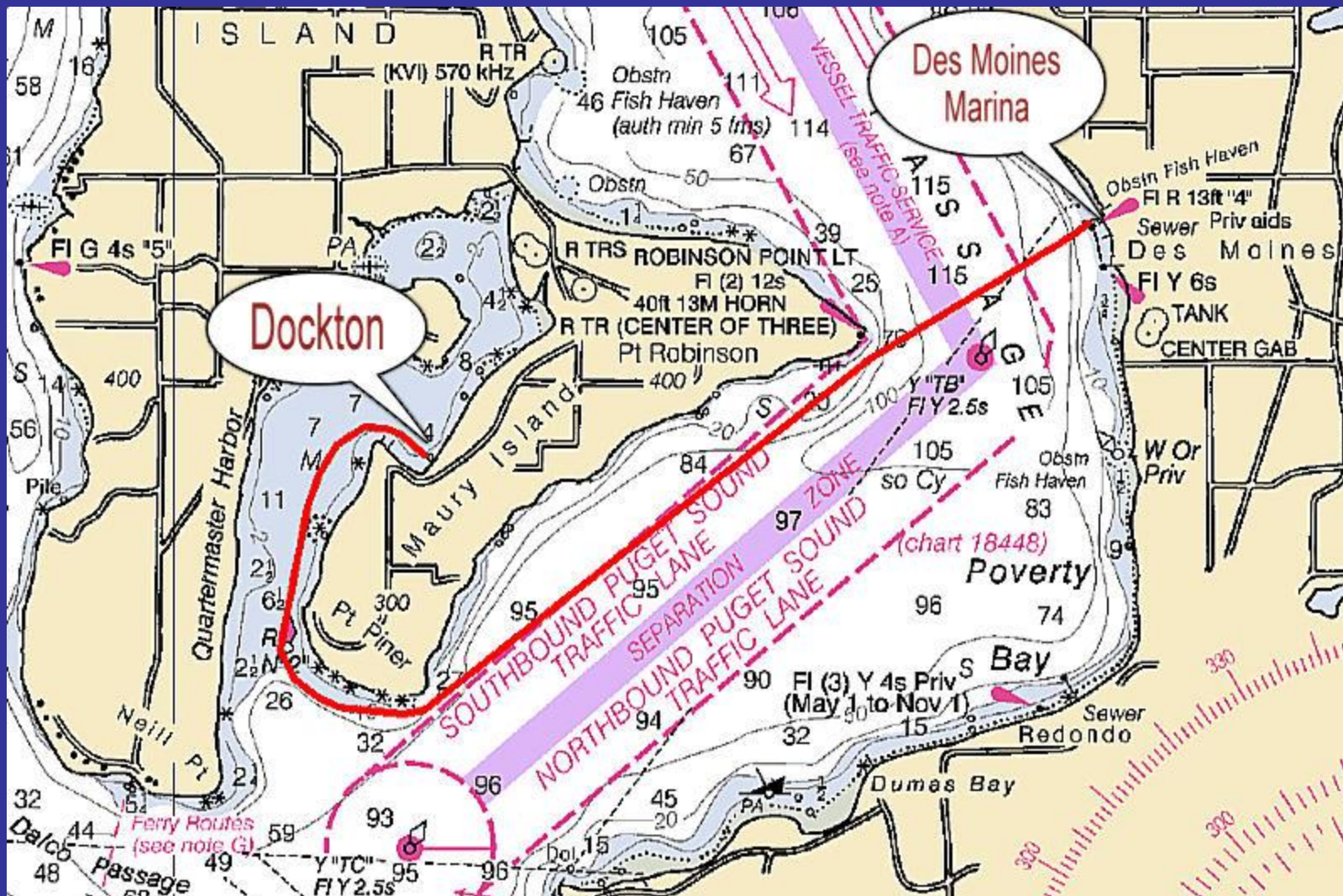
- 12 Day Cruise Des Moines to Olympia



Great Peninsula



- Des Moines Marina to Dockton
- 9.8 nm



Des Moines Marina Launch Sling



Des Moines Marina Fuel Dock



Leaving Des Moines Marina



Leaving Des Moines Marina



Point Robinson, Maury Island



Point Robinson, Maury Island



Dockton Moorage



Dockton Moorage



Dockton Moorage

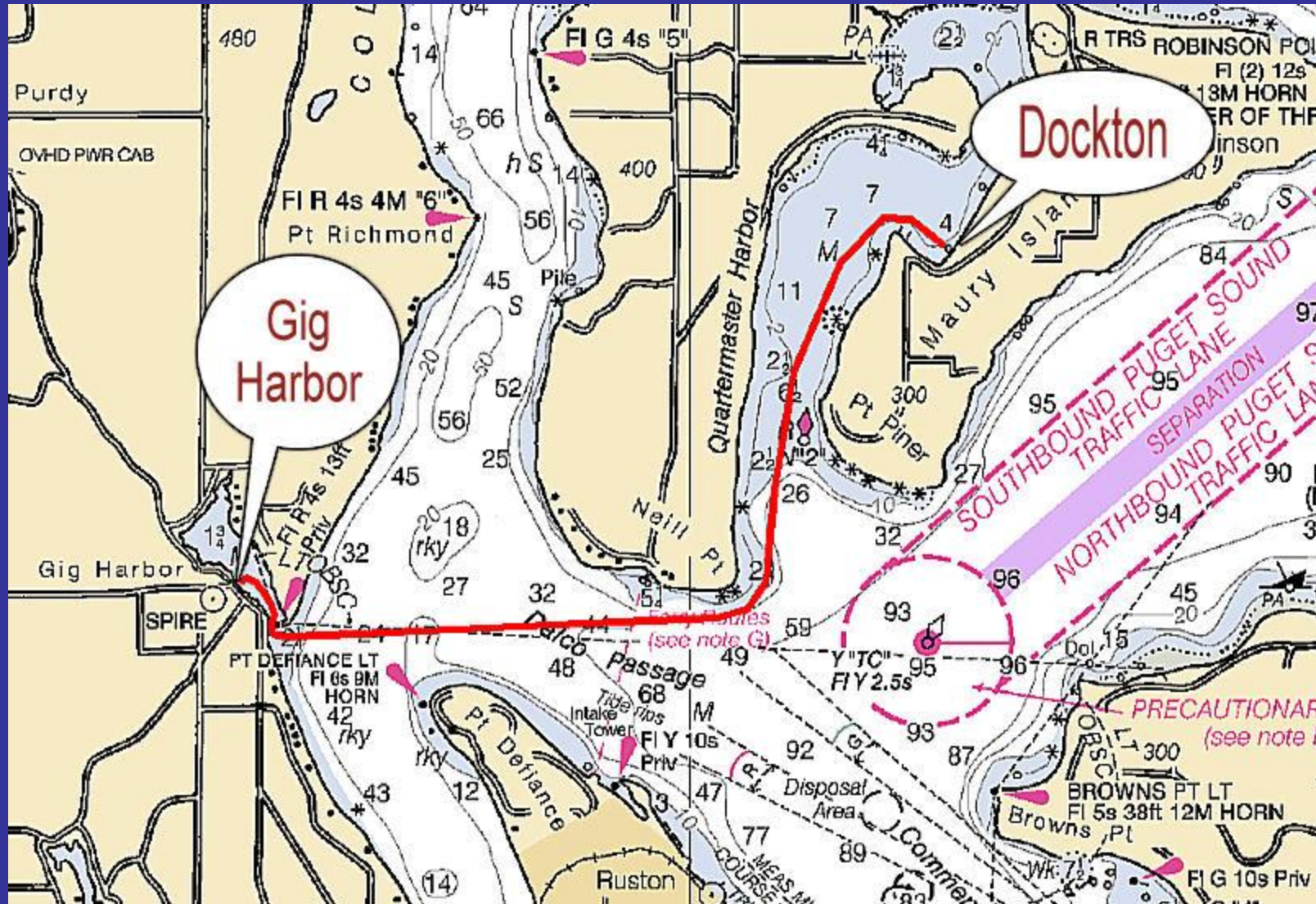


Sunset Over Dockton



JUN 6 2003

- Dockton to Gig Harbor
- 7.7 nm



Entering Gig Harbor



Gig Harbor City Dock



SEP 19 2001

Fishermans Memorial



Arabella's Landing



Tides Tavern

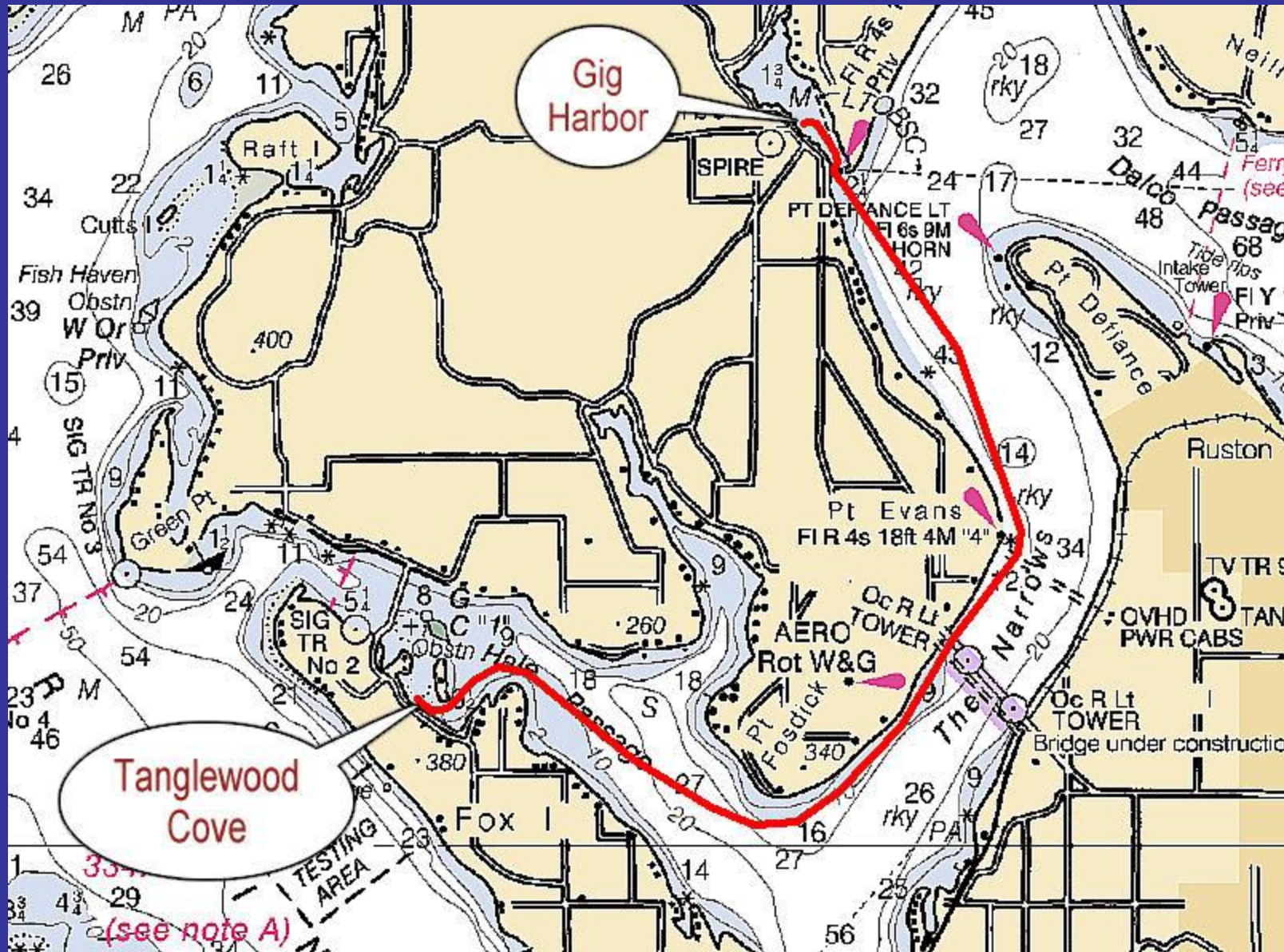


Little Tug in Gig Harbor



- Gig Harbor to Fox Island

- 8.8 nm



The Schooner Adventuress in the Tacoma Narrows



Rounding Point Fosdick



Fox Island Yacht Club in Cedrona Cove



Fox Island Yacht Club in Cedrona Cove



Fox Island Yacht Club in Cedrona Cove



Mount Rainier From Hale Passage



Former Ferry Landing on Fox Island



Servicing the Buoy in Hale Passage



Tanglewood Island Light House on Hale Passage



Tanglewood Island



Tanglewood Island Pavilion



Anchorage Behind Tanglewood Island

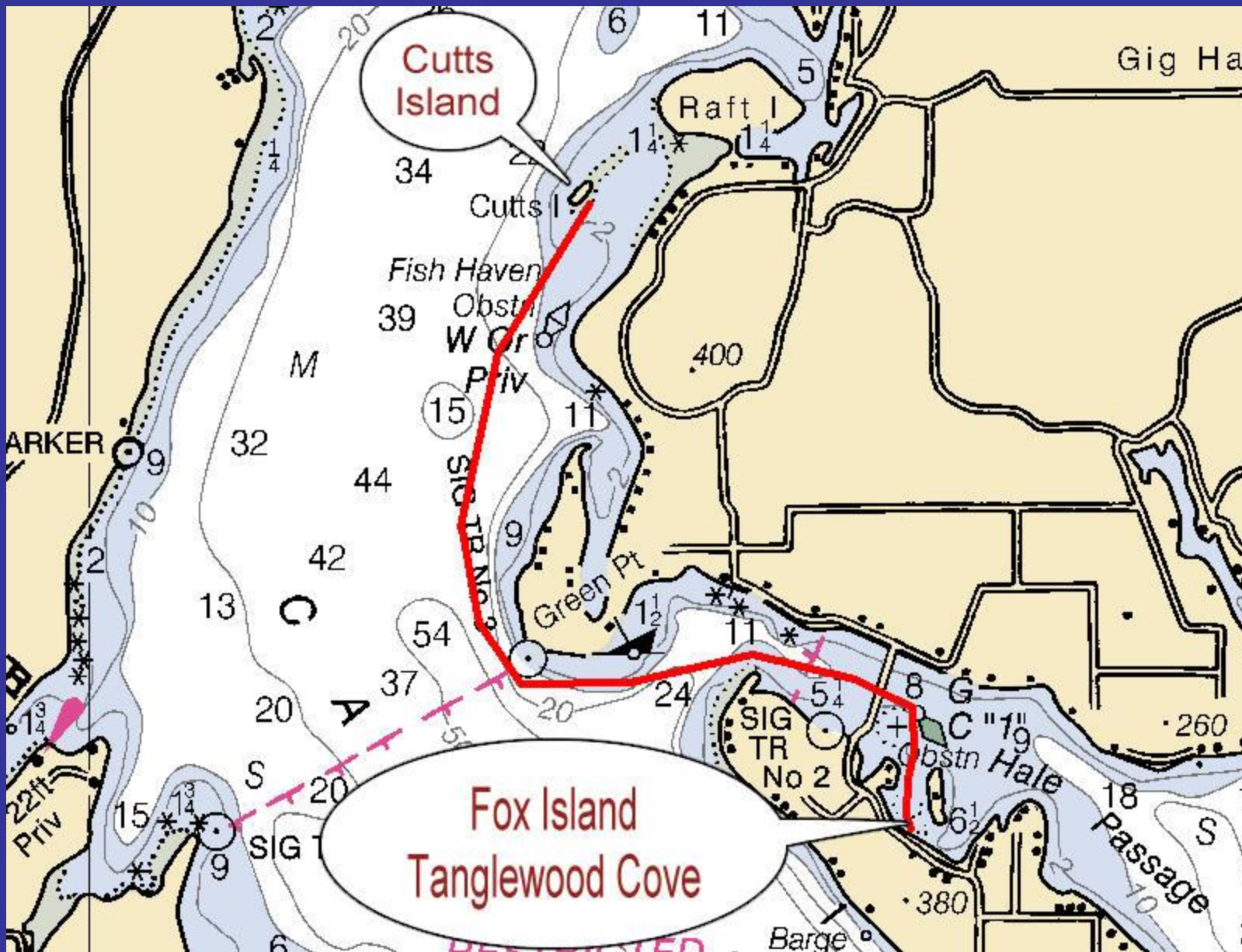


Tanglewood Cove Fish Farm



- Fox Island to Cutts Island

- 5.5 nm



Fox Island Bridge in Hale Passage



Fox Island Bridge in Hale Passage



Cutts Island, Marine State Park



Cutts Island, Marine State Park



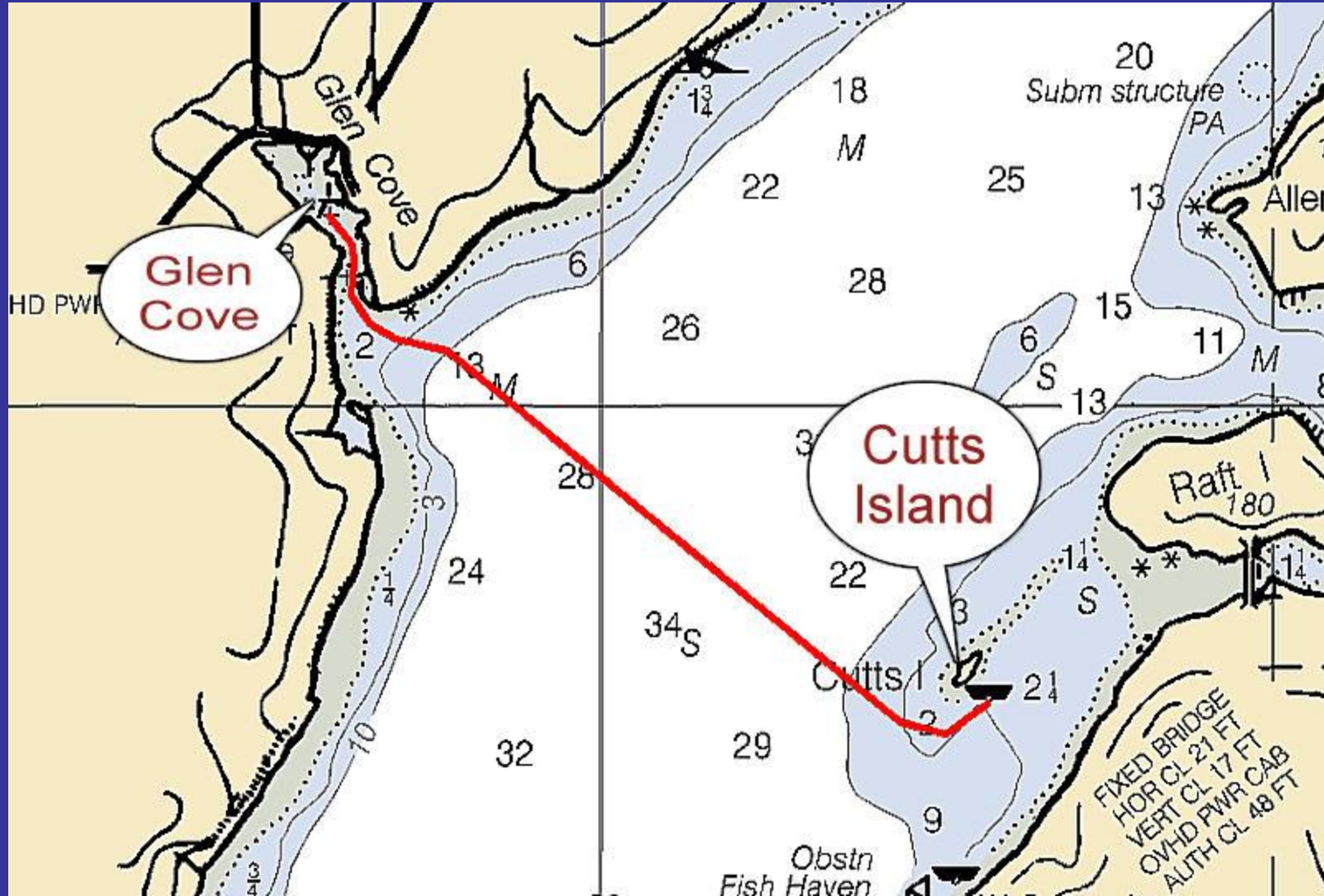
Cutts Island, Marine State Park



APR 3 2007

- Cutts Island to Glen Cove

- 2.5 nm



Ye Olde Glen Cove Hotel



Kayakers in Glen Cove

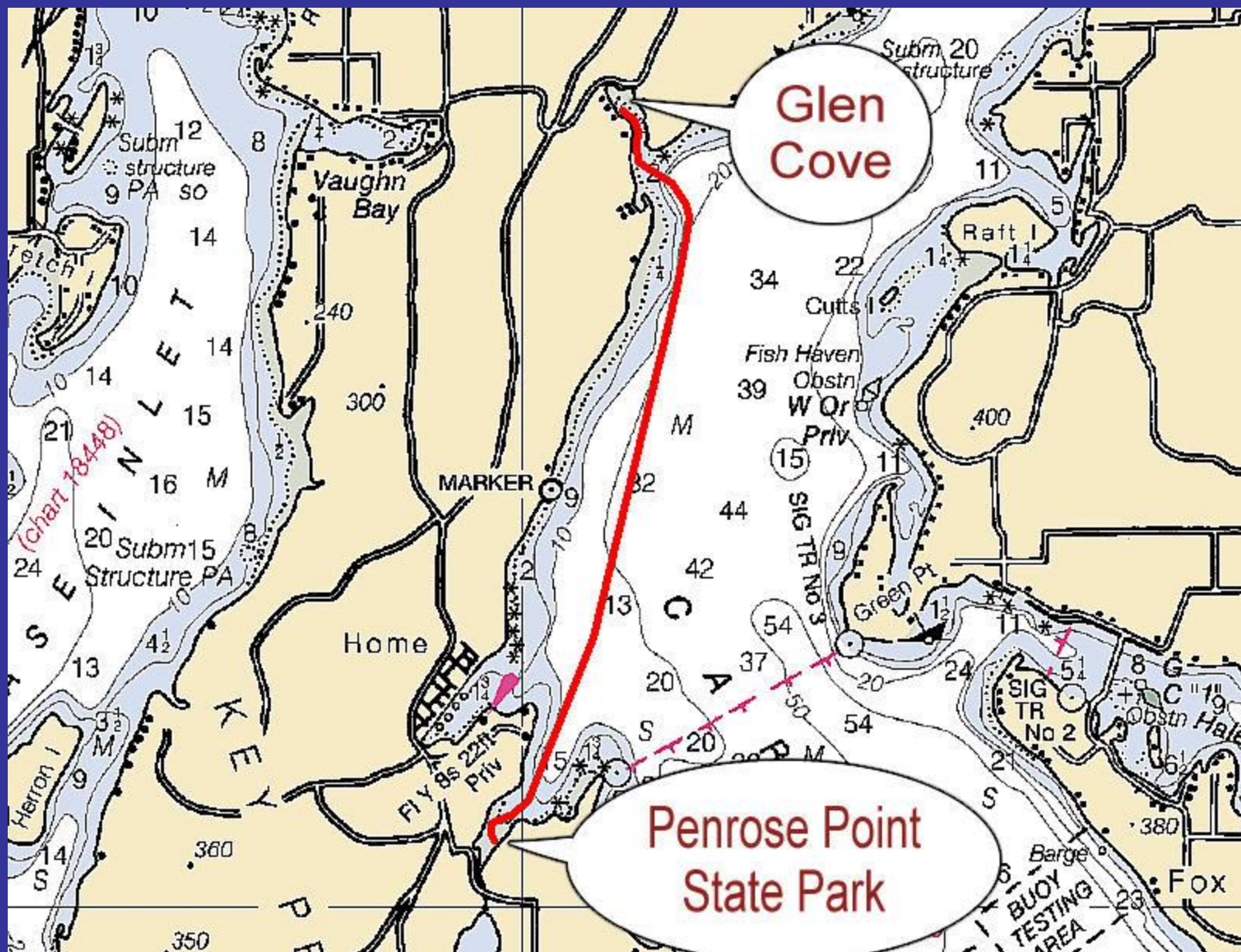


YMCA Camp Seymour in Glen Cove



• Glen Cove to Penrose Point State Park

• 5.7 nm



Penrose Point State Park Dock



Sign-in Please

BOATERS
ALL BOATS MOORED HERE DAY OR NIGHT
MUST PAY FEE AND REGISTER DAILY
WITH PARK RANGER AT PAY STATION

MOORAGE RULES

1. CONSERVE SPACE - MOOR CLOSE TO OTHER BOATS
2. "RAFTING" PERMITTED - NOT REQUIRED, LIMITED TO 3 BOATS (INCLUDING BOATS MOORED TO DOCK)
3. CONTINUOUS MOORAGE LIMITED TO 3 CONSECUTIVE NIGHTS (UNLESS OTHERWISE POSTED)
4. DINGHYS - MOOR ONLY IN DESIGNATED AREAS
5. DEVICES WITH OPEN FLAME OR COALS PERMITTED ON DOCKS OR FLOATS ONLY WHEN ON A FIREPROOF BASE, LOCATED AWAY FROM FUEL TANKS OR VENTS
6. NO RESERVING OF MOORAGE SPACE
7. FAILURE TO REGISTER MAY RESULT IN FINE AND/OR FORFEITURE OF MOORAGE
8. USE OF THESE FACILITIES BY COMMERCIAL VESSELS RESTRICTED TO LOADING AND UNLOADING PASSENGERS
9. PASS / PERMIT HOLDERS MUST REGISTER

 **CHECK OUT TIME IS 1PM**

BOATERS:
UPON ARRIVAL
CHECK IN
REQUIRED AT
PAY STATION

Washington State Parks and Recreation Commission

MOORAGE FEE AREA

Dock/Float \$0.50 per foot/per day
(minimum \$10.00)

BUOY/LINEAR \$10.00 each boat/per day

FEE IS REQUIRED OF ALL BOATERS
1:00 pm TO 8:00 am

REGISTER WITHIN 30 MINUTES OF ARRIVAL

Check Out Time 1:00 pm
For Annual Permits, contact Park Staff
All Pay Instruction and Fees are posted by Pay Station.

Dock in Mayo Cove



Registration



On the Dock



Winter Visit



Winter Foilage



DEC 18 2003

Penrose Point State Park



Picnic Area by the Dock



Another Picnic Area

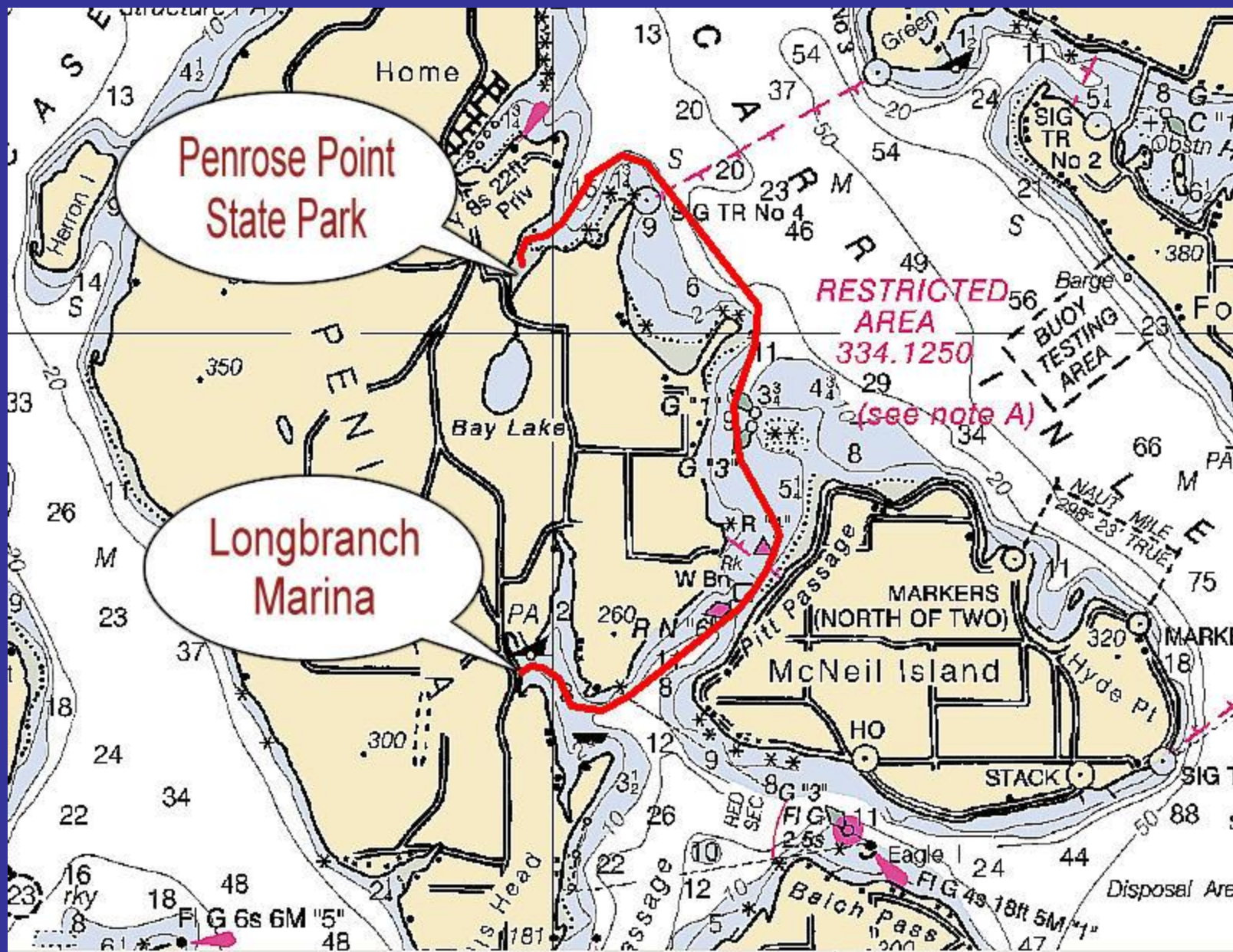


On the Dock



• Penrose Point State Park to Longbranch

• 6.9 nm



Longbranch Marina in Fil Lucy Bay



Sign-in at Longbranch Marina



In Longbranch Marina



Longbranch Marina



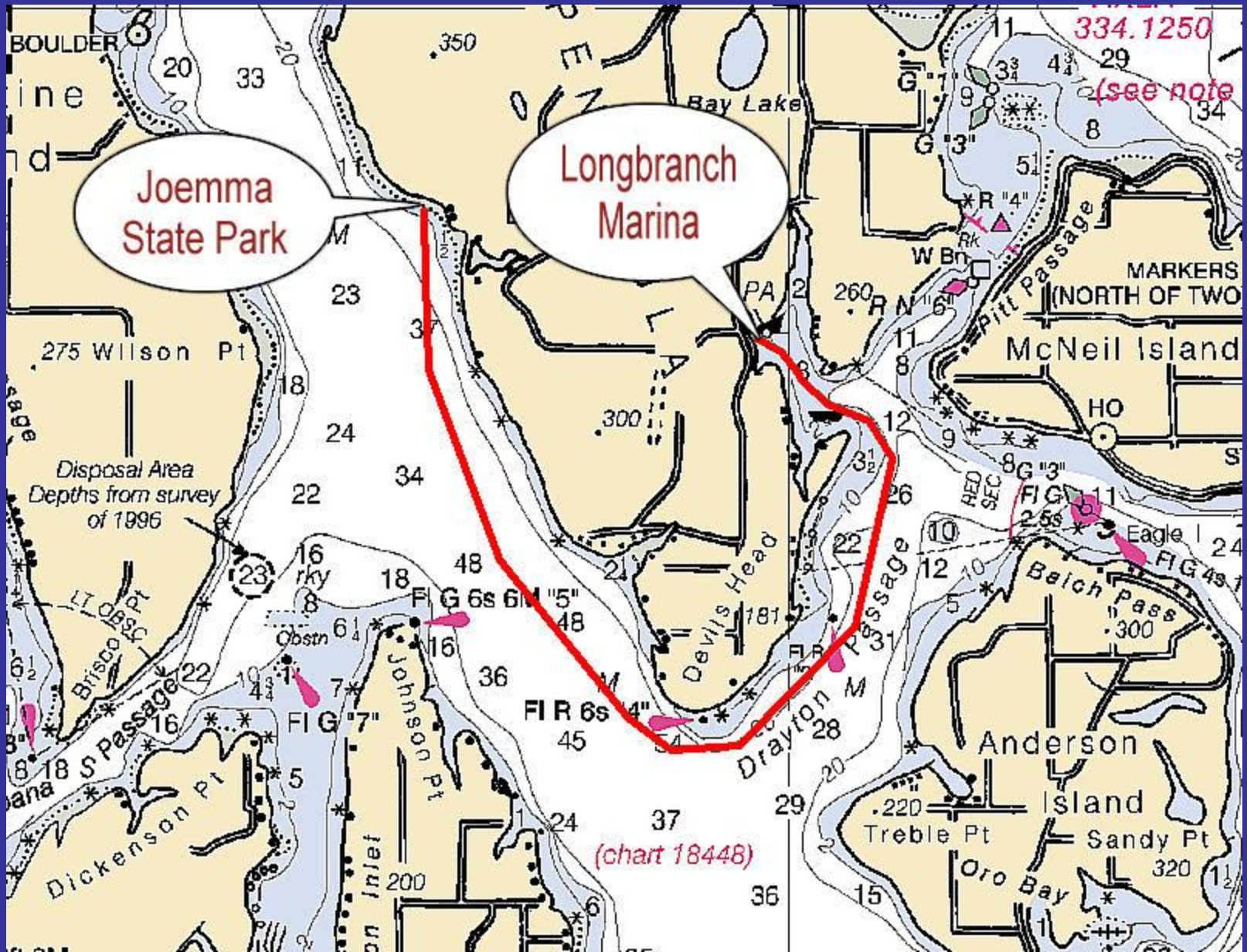
Anchorage in Filucy Bay



MAR 23 2002

• Longbranch to Joemma State Park

• 8.5 nm

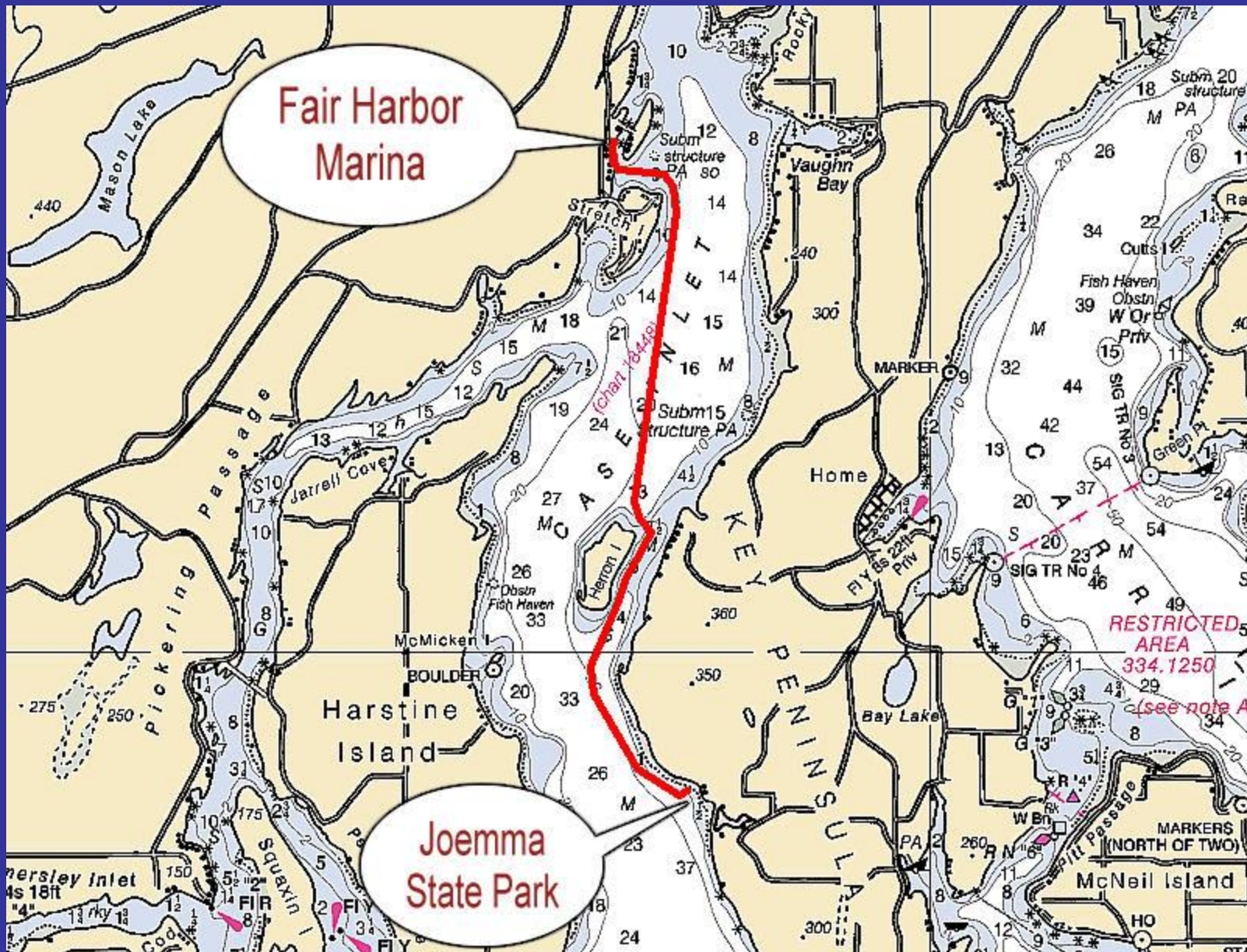


Dock at Joemma State Park

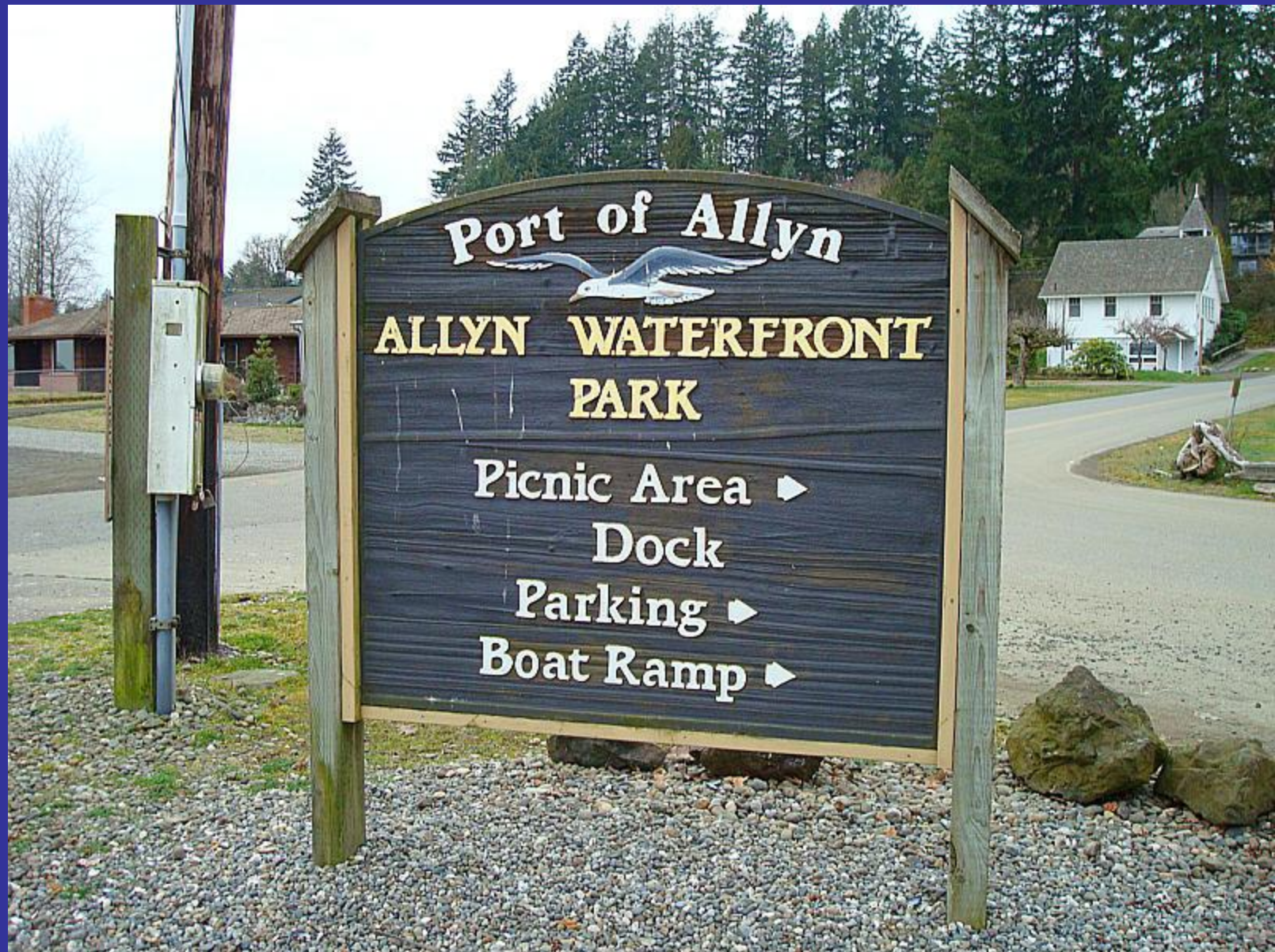


• Joemma State Park to Fair Harbor Marina

• 8.0 nm



Port of Allyn



Port of Allyn



Port of Allyn



Port of Allyn Dock



Port of Allyn Shelter



Between Stretch Island and Reach Island



Port of Grapeview



Fair Harbor Marina



Fair Harbor Marina

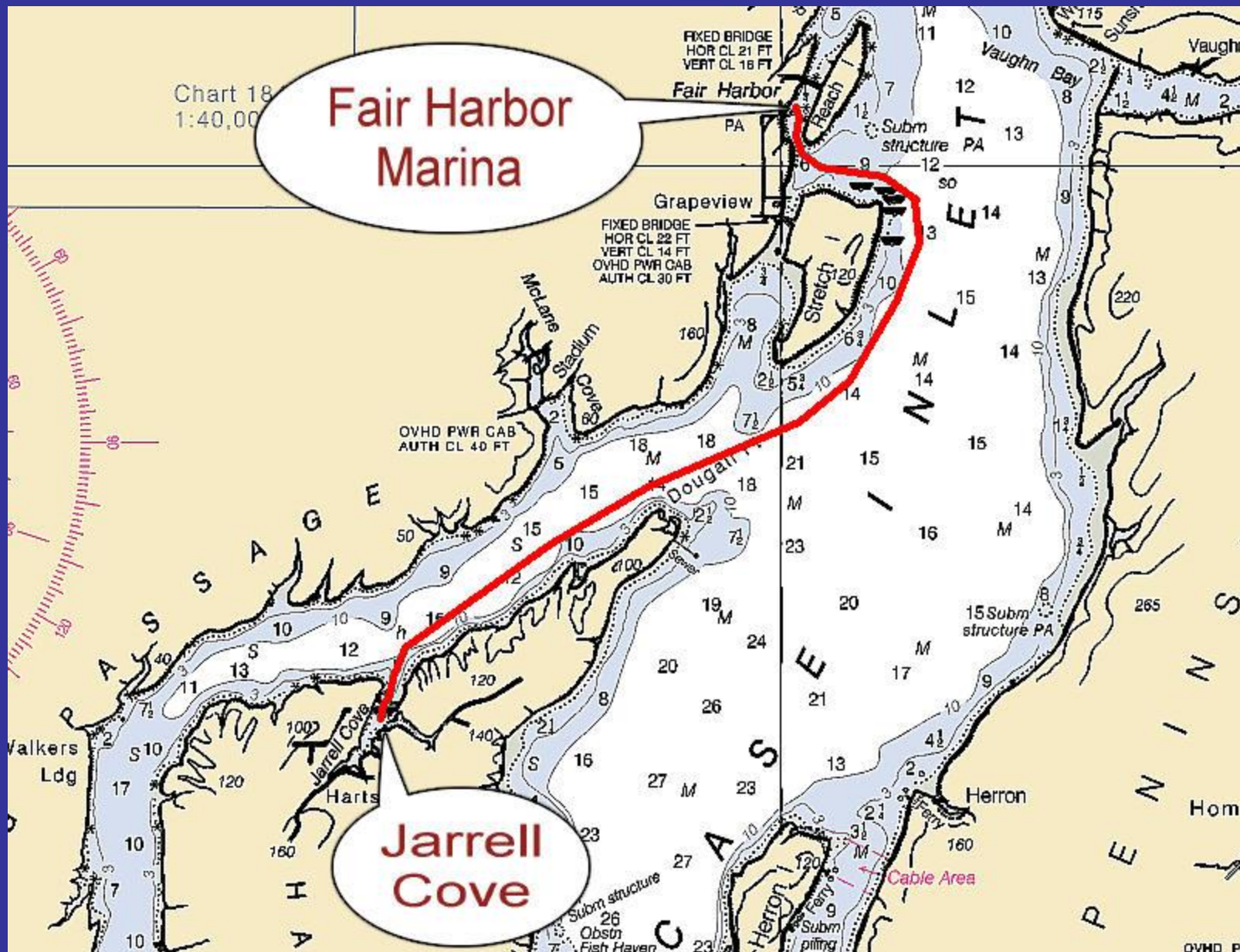


Fair Harbor Marina



Fair Harbor Marina to Jarrell Cove

• 5.4 nm



Jarrell Cove State Park Outer Dock



Pump-out in Jarrell Cove State Park



Jarrell Cove Outer Dock



Jarrell Cove Outer Dock



JUN 5 2003

Jarrell Cove Campground



Jarrell Cove Campground



Jarrell Cove State Park Inner Dock



Jarrell Cove State Park Inner Dock



Jarrell Cove Marina

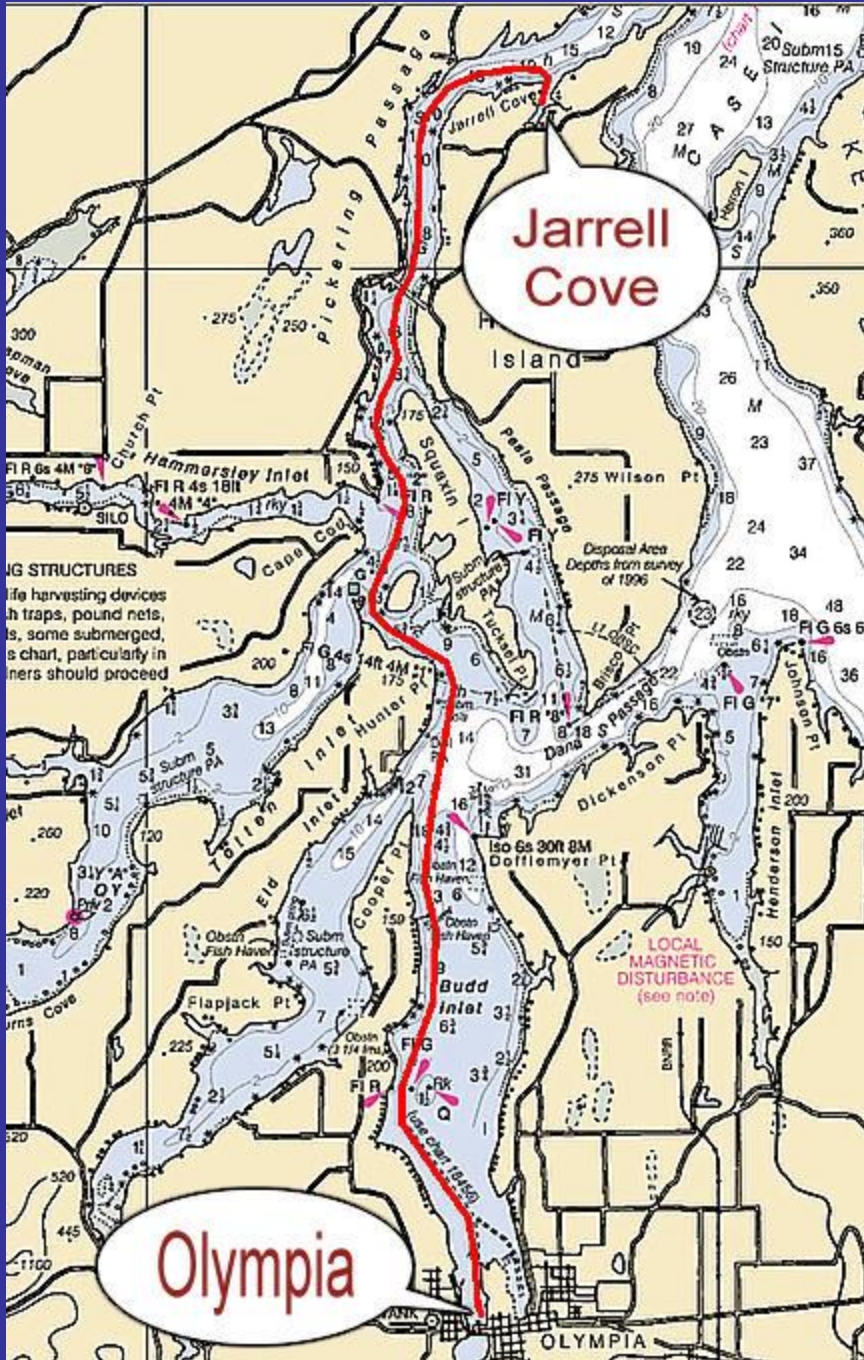


Jarrell Cove Marina



Jarrell Cove Marina Fuel Dock





Jarrell
Cove

Olympia

- Jarrell Cove to Percival Landing, Olympia
- 16.9 nm

Percival Landing



Percival Landing



Percival Landing Public Docks



Percival Landing Public Docks



Percival Landing Public Docks



Percival Landing Public Docks

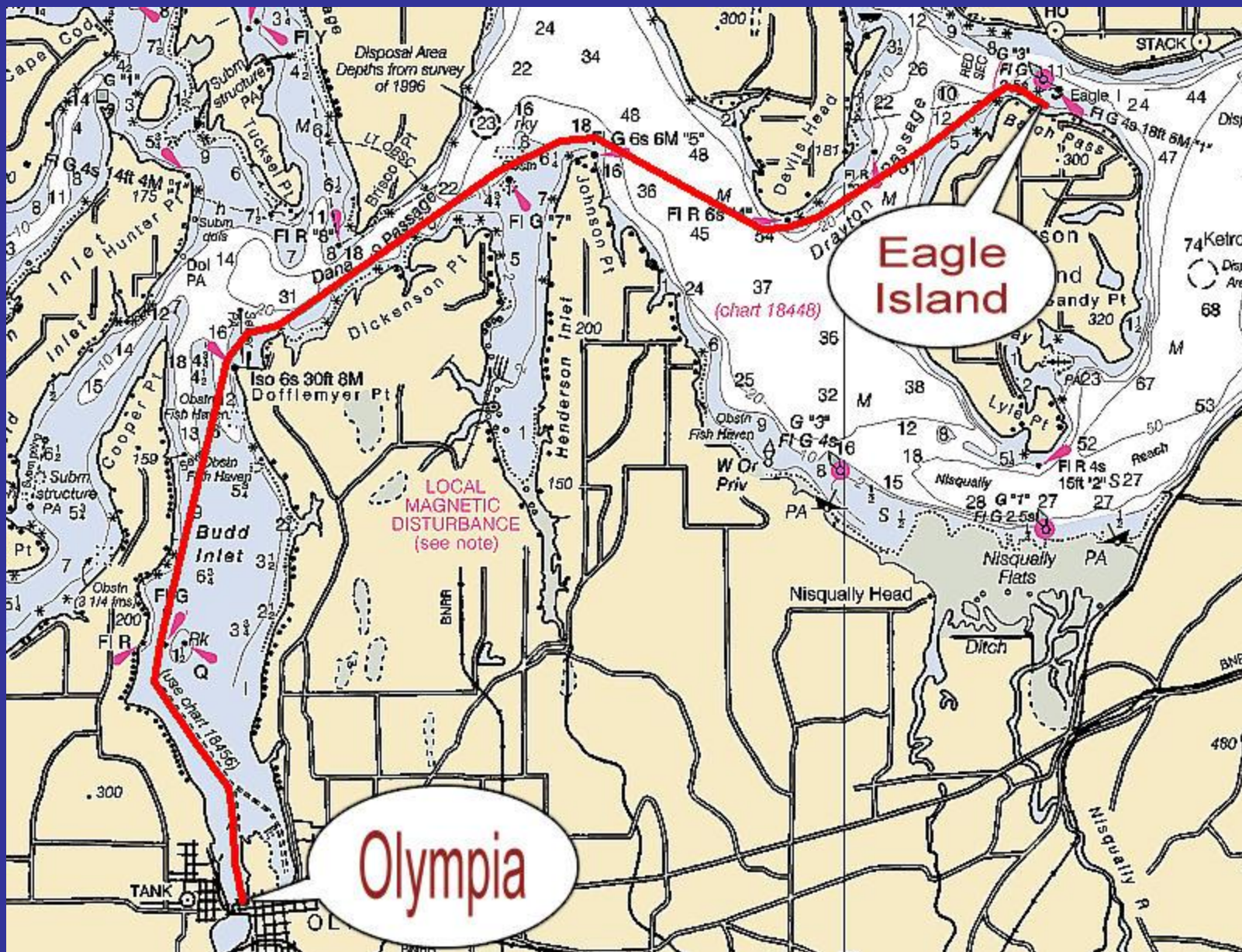


Kissing Statue at Percival Landing



• Olympia to Eagle Island

• 16.2 nm



Eagle Island Marine State Park



Buoys on West Side



Rope Swing on Eagle Island



Reef Along West Side



Kayakers on Eagle Island



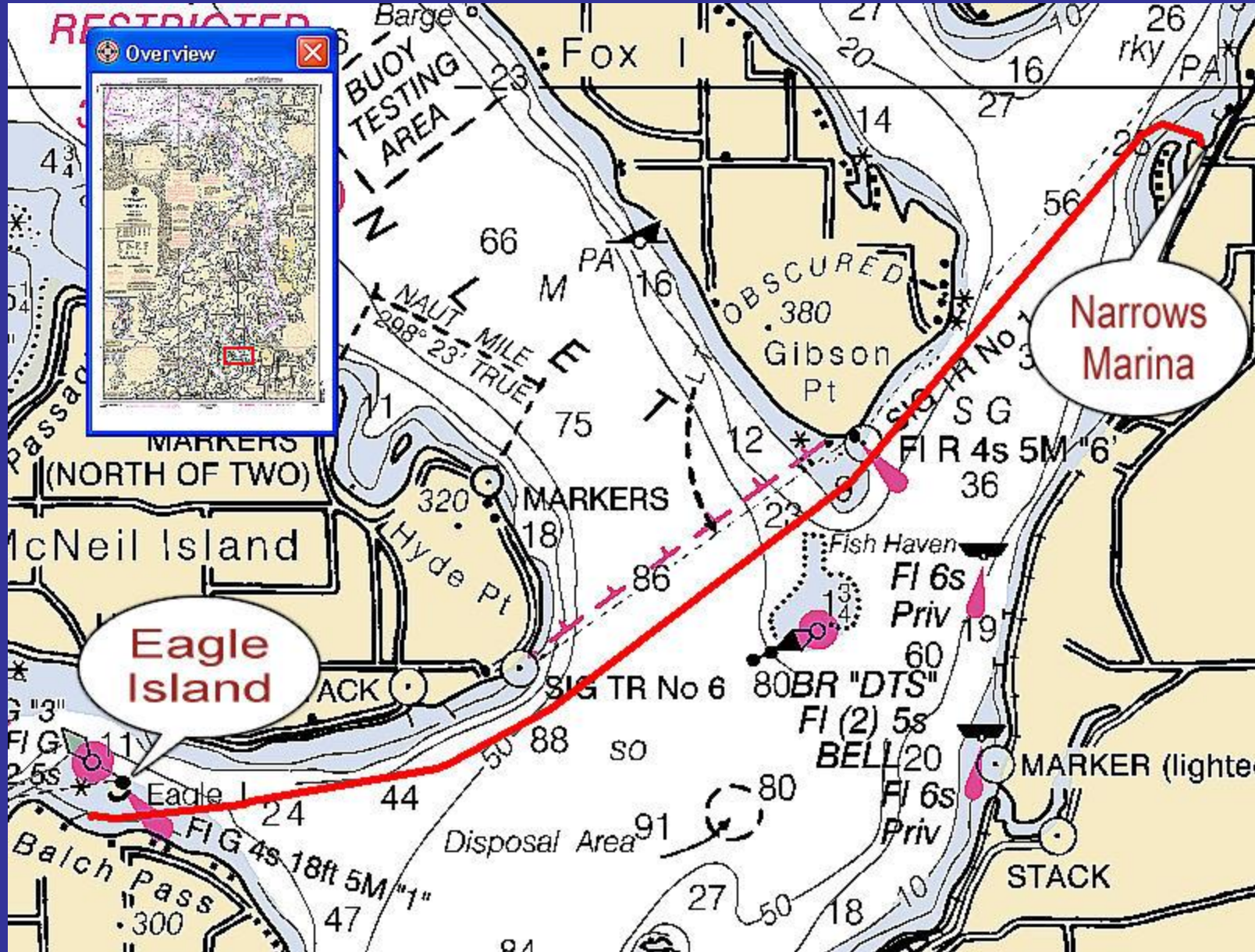
MAY 26 2007

Boaters on Eagle Island



• Eagle Island to Narrows Marina

• 7.2 nm



Passing McNeil Island Prison



Fox Island Fishing Pier



Tow Boat in the Tacoma Narrows



Point Fosdick Across from Narrows Marina



Approaching Narrows Marina



Approaching Narrows Marina



Narrows Marina



Narrows Marina Fuel Dock



Police Recovery of Stolen Boats

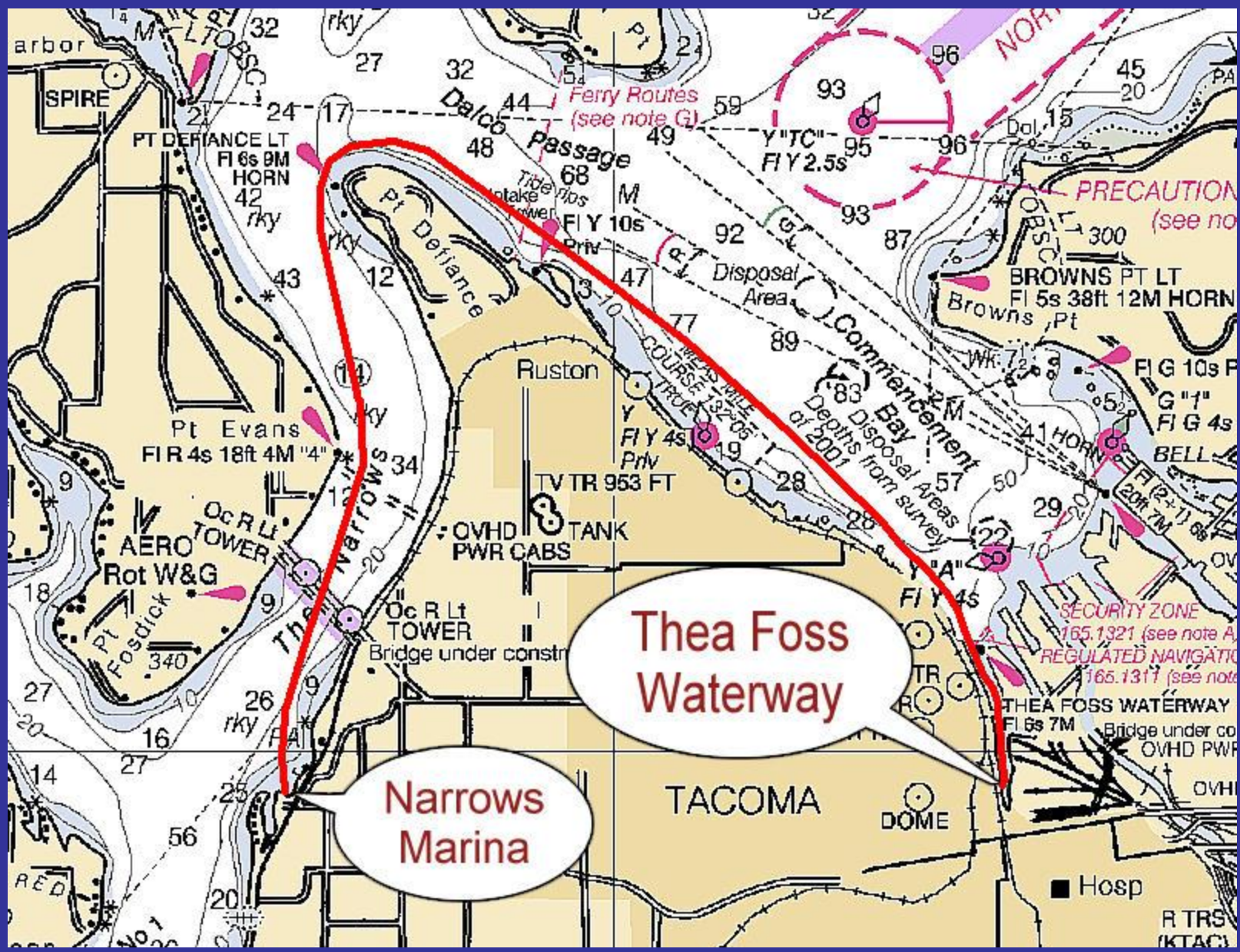


Day Island Yacht Club



Narrows Marina to Thea Foss Waterway

• 11.6 nm



Titlow Beach



Old Ferry Landing at Titlow Beach



Canoe in Tacoma Narrows



FEB 17 2007

Before the Second Tacoma Narrows Bridge



Second Tacoma Narrows Bridge Under Construction



Second Tacoma Narrows Bridge Under Construction



Second Tacoma Narrows Bridge Under Construction



Approaching Point Defiance



Tacoma Fireboat and Coast Guard Patrol at Point Defiance



Point Defiance Park



Entering Thea Foss Waterway



11th Avenue Bridge



Thea Foss Waterway



MAY 15 2007

Moorage on Thea Foss Waterway



Along the Thea Foss Waterway



MAY 15 2007

DOCK STREET

MARINA

NORTH PIER

- Public pier for recreational boats and seaplanes only.
- Two hour maximum stay.
- No overnight moorage.
- No water, electric, trash removal or pumpout services provided.
- Please leave dock shipshape.
- For emergencies dial 9-1-1.

Commercial vessels intending to pick up or drop off passengers must make advanced reservations at least 24 hours in advance - usage fees apply. Private recreational boats and seaplanes take precedence.

Marina Office (253) 272-4352

Dock
Street
Marina,
North Pier

MAY 15 2007

Dock Street Marina North Pier



Approaching Dock Street Marina, South



Union Station, Tacoma



Dock Street Marina, South



In the Dock Street Marina, South



Facilities in Dock Street Marina



Glass Museum from Dock Street Marina



Entrance to Museum of Glass



Cable Stay Bridge

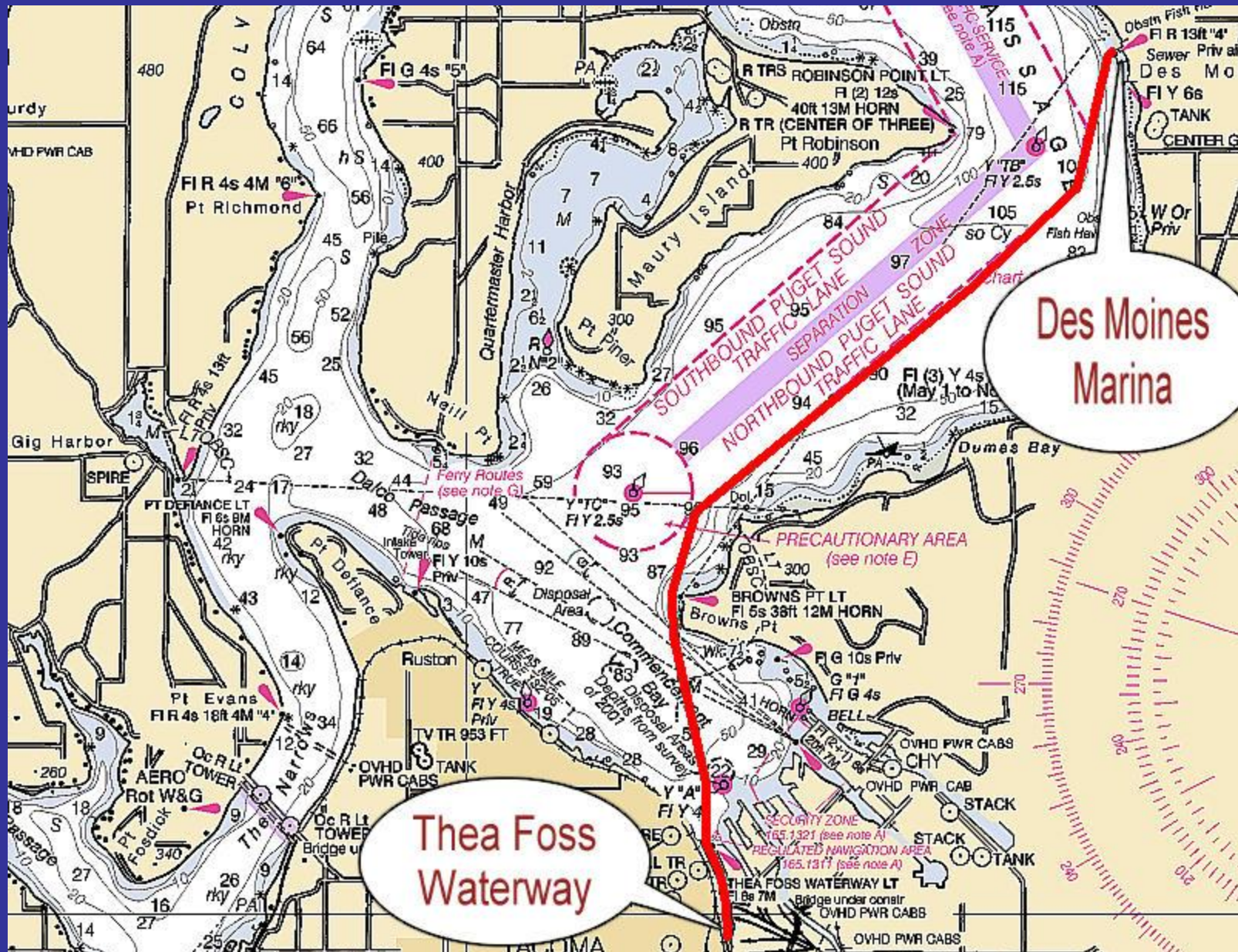


Along the Thea Foss Waterway



• Thea Foss Waterway to Des Moines Marina

- 11.4 nm
- One hour 31 Min. @ 7.5 knots



Leaving the Thea Foss Waterway



Mount Rainier Over Poverty Bay



Entering Des Moines Marina

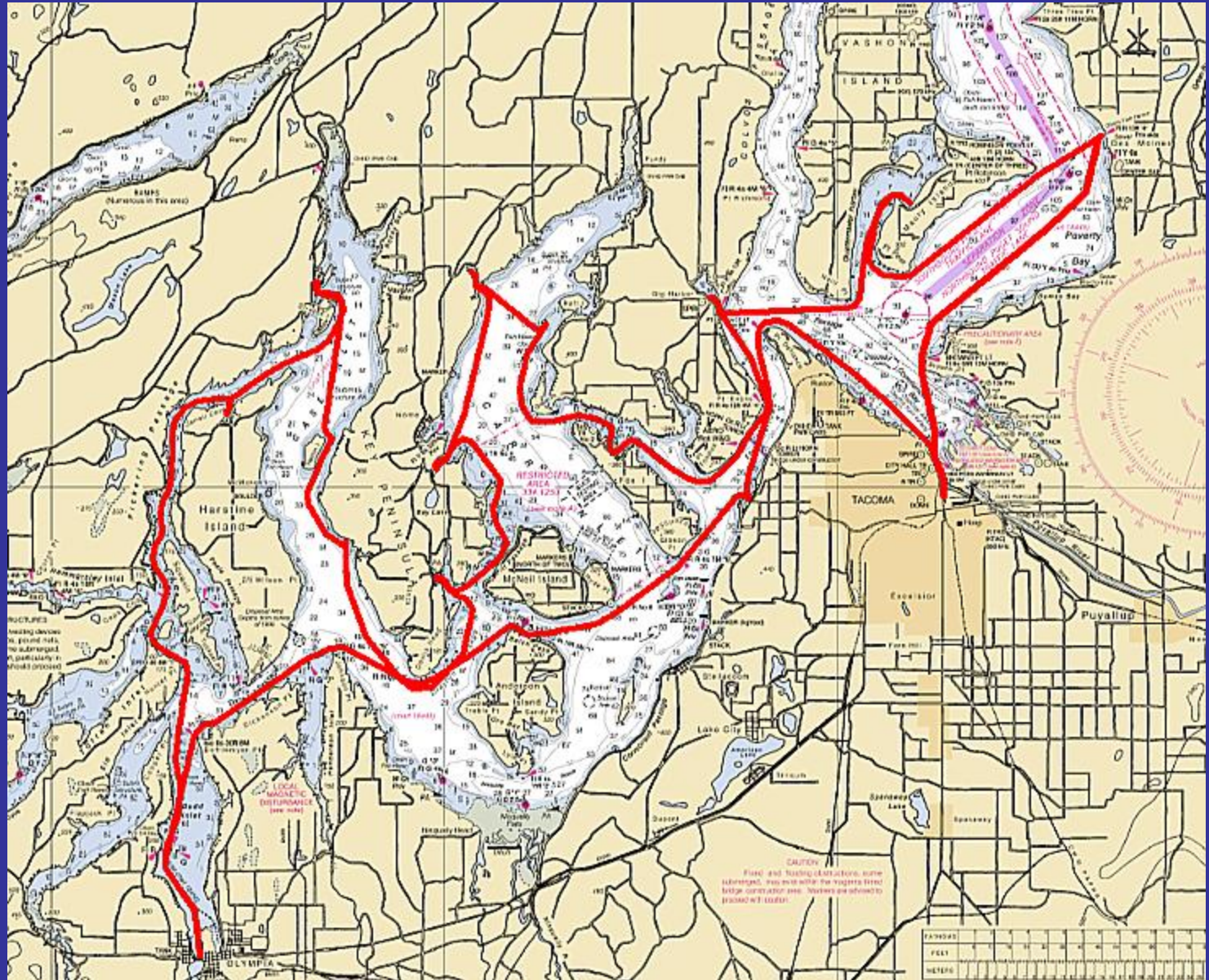


Statue in Des Moines Marina



Overall Cruise

- 132.1 nm
- 17 hours 37 min. @ 7.5 knots



- Very truly yours,

Carl Tenning



<http://carlten.tripod.com>