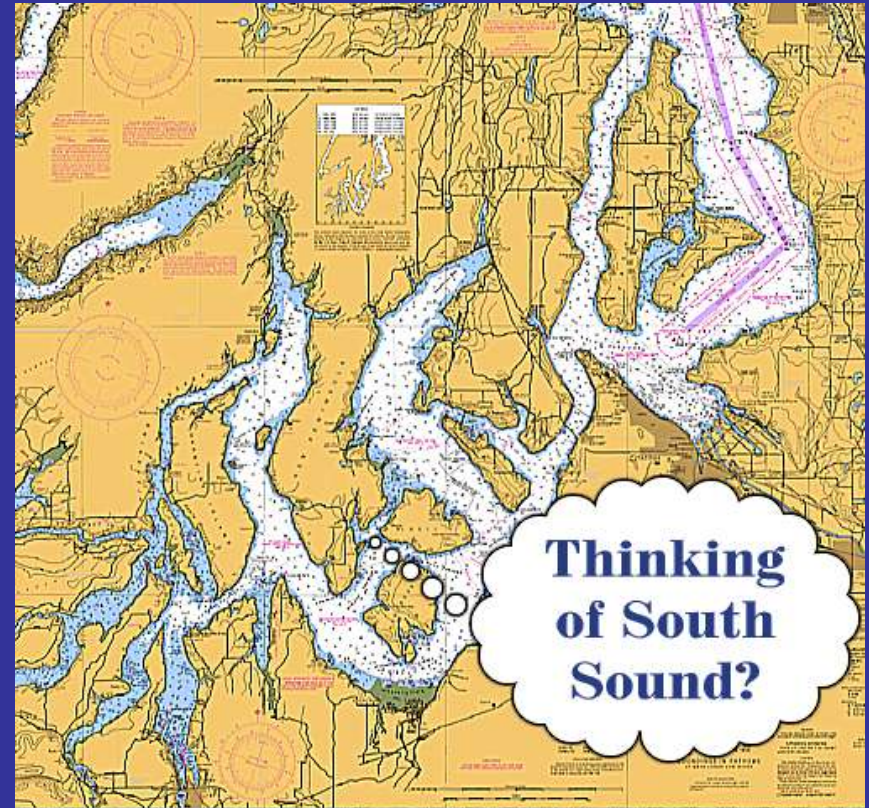


Olympia to Seattle

# Cruising South Sound

by Carl Tenning

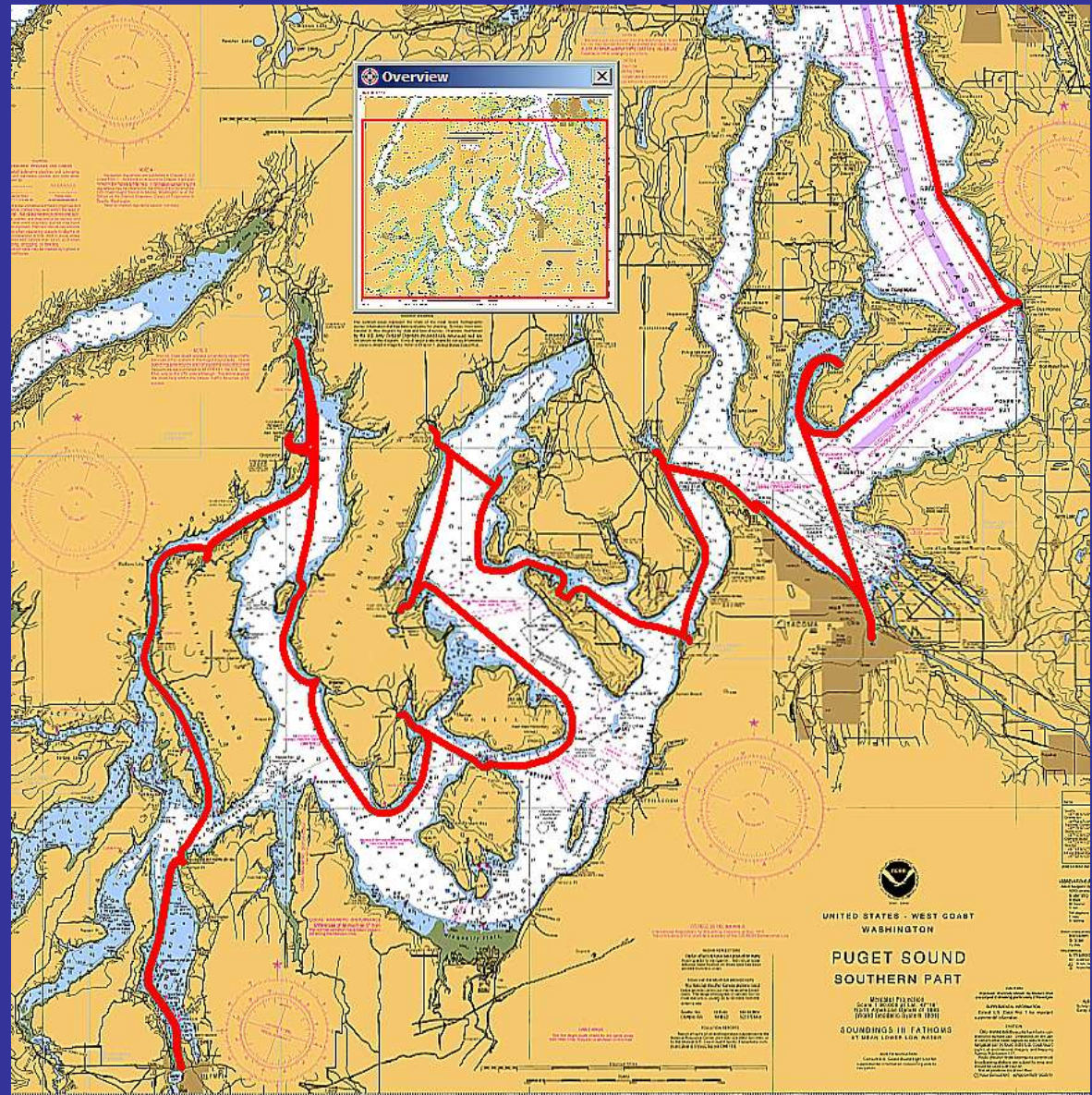


<http://carlten.net>

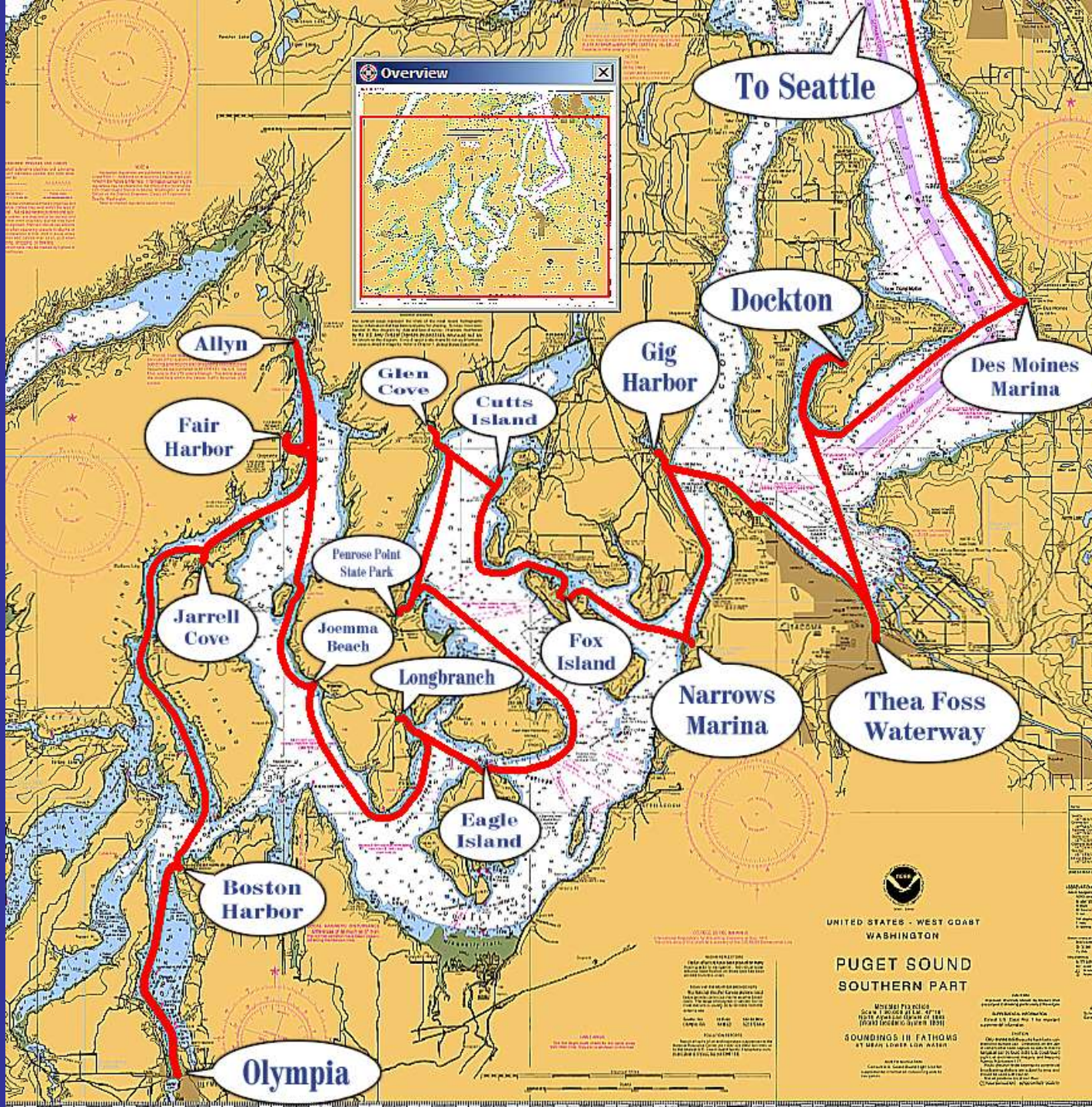


# Cruising South Sound

- 12-18 Day  
Cruise  
Olympia  
to Seattle  
(Shilshole  
Bay)
- 128.4 nm







To Seattle

Dockton

Des Moines Marina

Gig Harbor

Cutts Island

Glen Cove

Fair Harbor

Jarrell Cove

Penrose Point State Park

Joemma Beach

Longbranch

Fox Island

Narrows Marina

Thea Foss Waterway

Eagle Island

Boston Harbor

Olympia

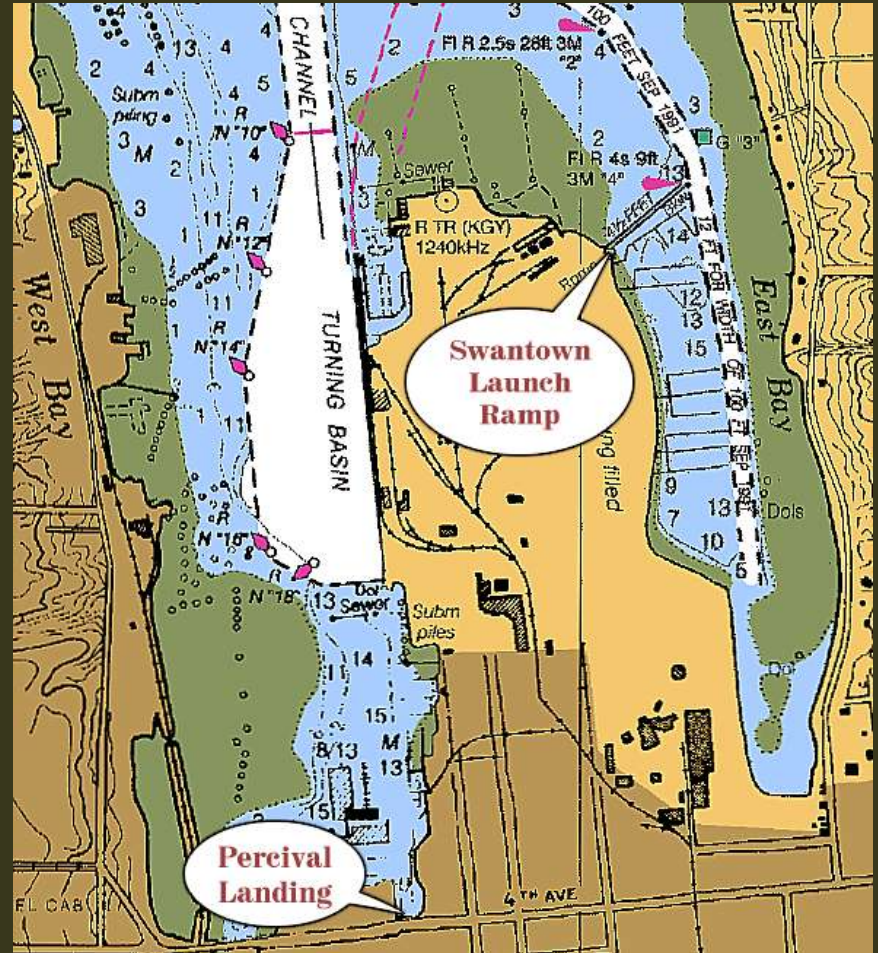


UNITED STATES - WEST COAST  
WASHINGTON  
PUGET SOUND  
SOUTHERN PART

WATER FATHOMS  
SOUNDINGS IN FATHOMS  
BY LEAST LOWER LOW WATER



# Olympia





# 77 Ton Marine Travel Lift





# Swantown Marina Launch Ramp





# Swantown Marina Guest Dock





# Swantown Marina Guest Dock





# Looking Out on Budd Inlet





# Percival Landing Public Docks





# Percival Landing Public Docks





# Percival Landing Public Docks





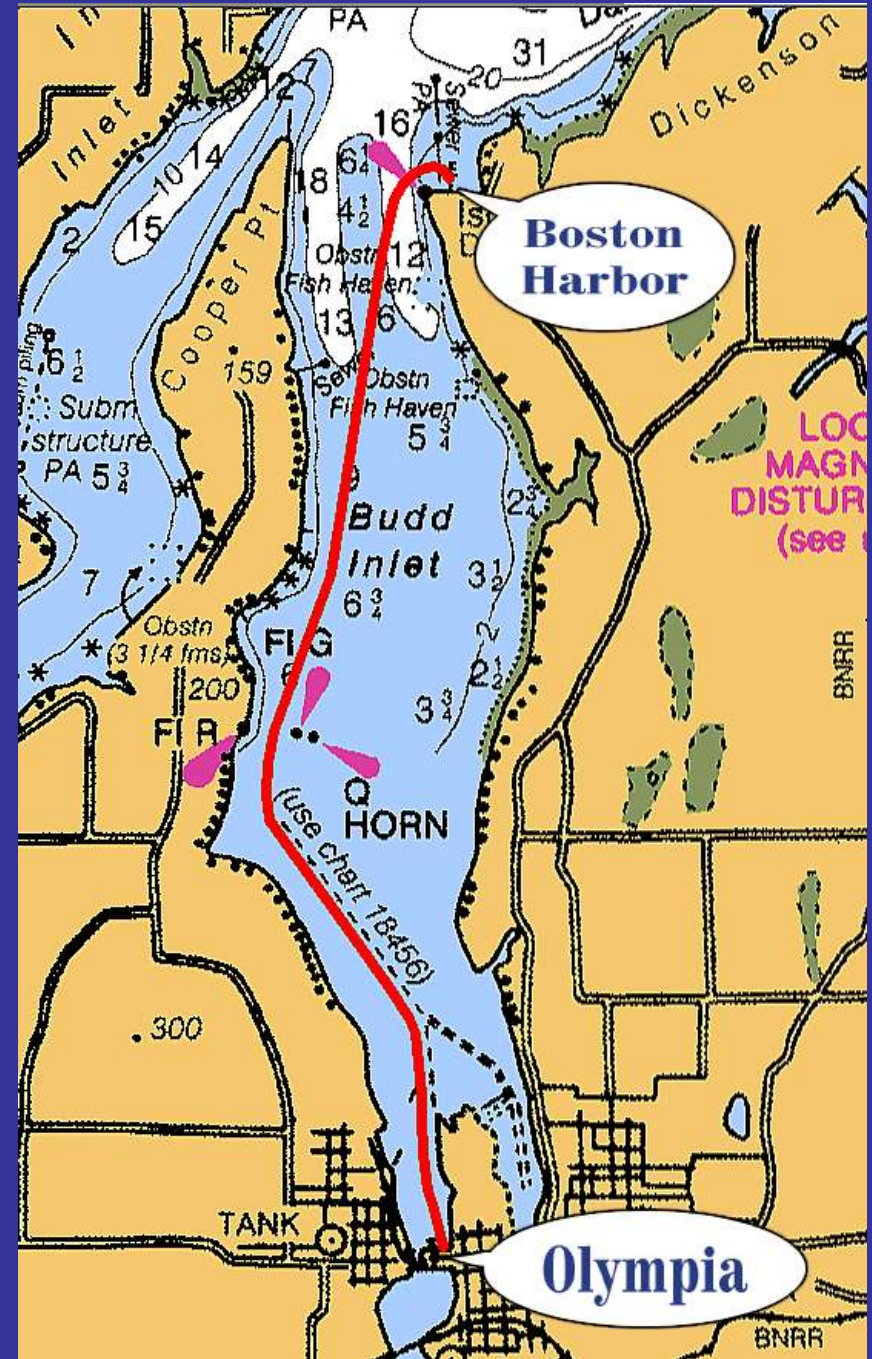
# Percival Landing Public Docks





# Olympia to Boston Harbor

- 6.4 nm
- 55 min  
@ 7.0 knots





# Boston Harbor Marina





# Boston Harbor Marina





# Boston Harbor Marina



# Boston Harbor Marina

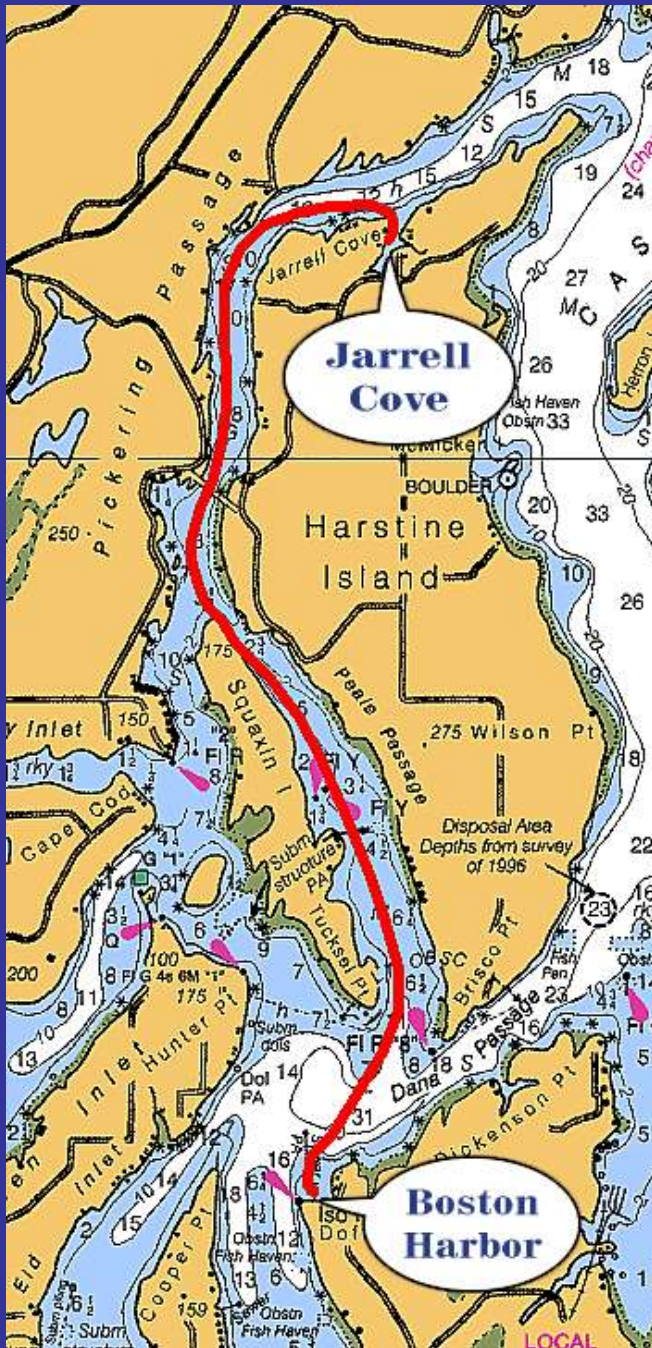




# Boston Harbor Marina



# Boston Harbor to Jarrell Cove



- 10.9 nm
- One hour  
35 min @  
7.0 knots



# Jarrell Cove State Park Outer Dock





# Pump-out in Jarrell Cove State Park





# Jarrell Cove Outer Dock





# Jarrell Cove Outer Dock





# Jarrell Cove Campground





# Jarrell Cove Campground





# Jarrell Cove State Park Inner Dock





# Jarrell Cove State Park Inner Dock





# Jarrell Cove Marina





# Jarrell Cove Marina





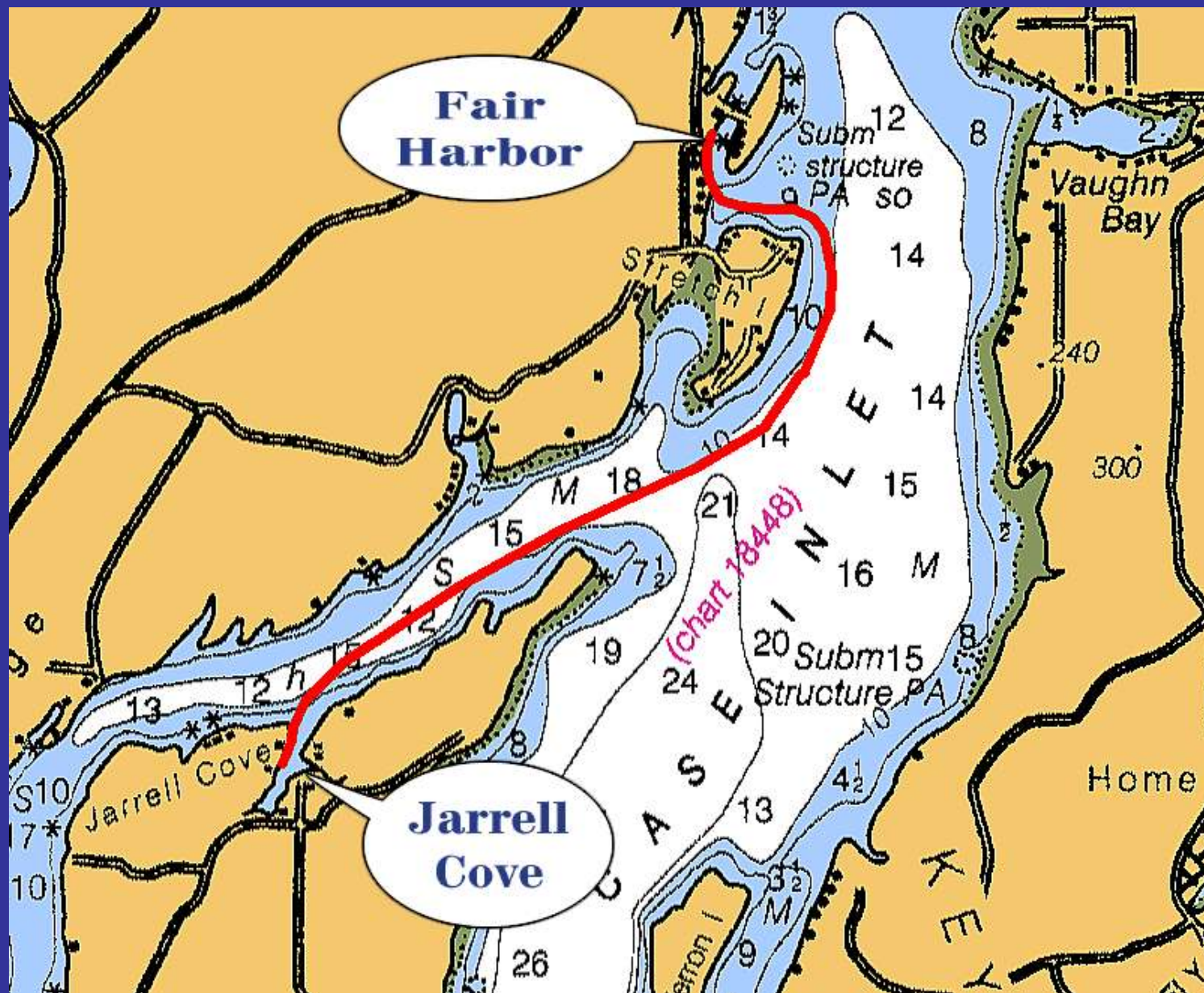
# Jarrell Cove Marina Fuel Dock





- Jarrell Cove to Fair Harbor Marina

- 5.4 nm
- 48 min @ 7.0 knots





# Between Stretch Island and Reach Island





# Fair Harbor Marina





# Fair Harbor Marina





# Fair Harbor Marina





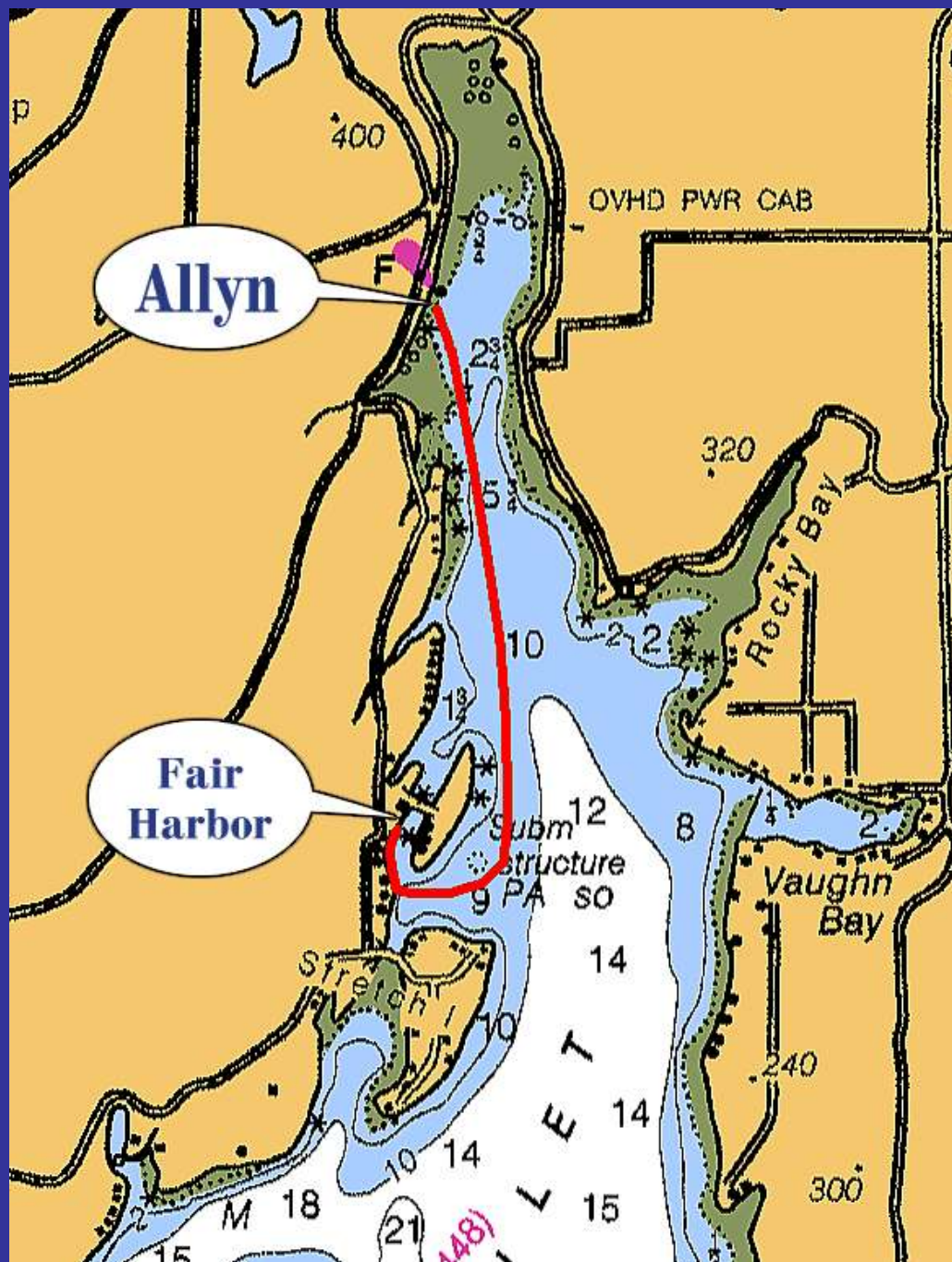
# Port of Grapeview





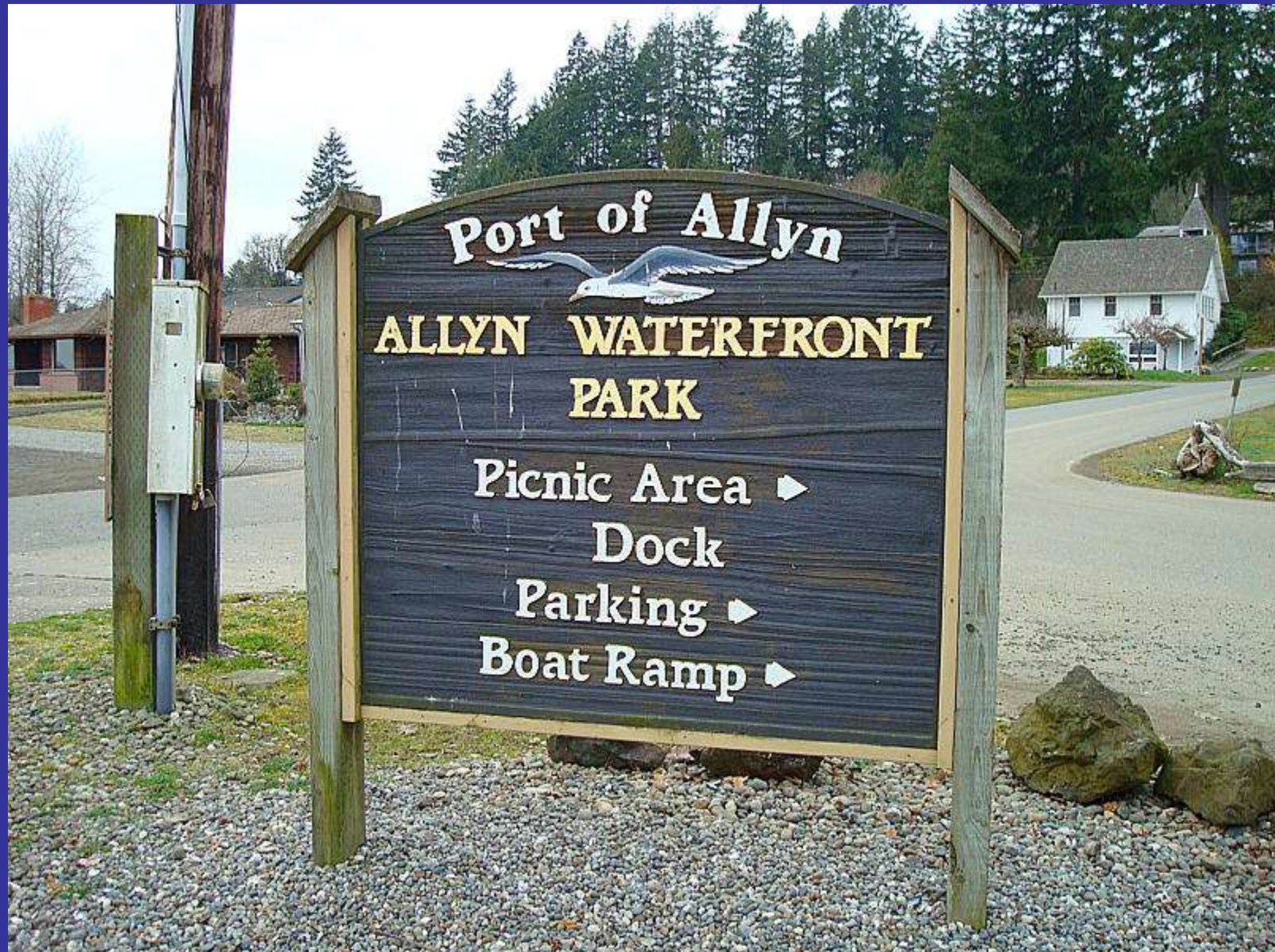
# Fair Harbor Marina to Port of Allyn

- 3.7 nm
- 32 min @  
7.0 knots





# Port of Allyn





# Port of Allyn





# Port of Allyn Dock





# Port of Allyn





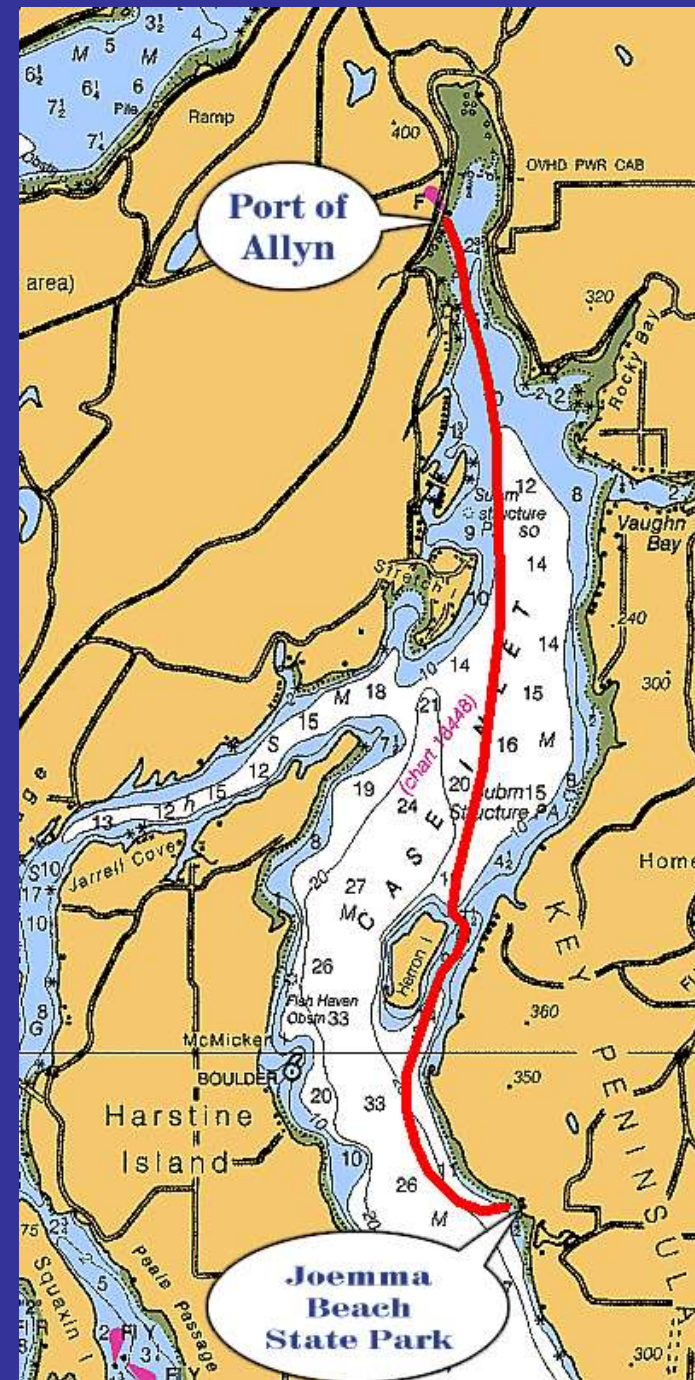
# Port of Allyn Shelter





# Port of Allyn to Joemma Beach State Park

- 10.3 nm
- One hr 28 min  
@ 7.0 knots



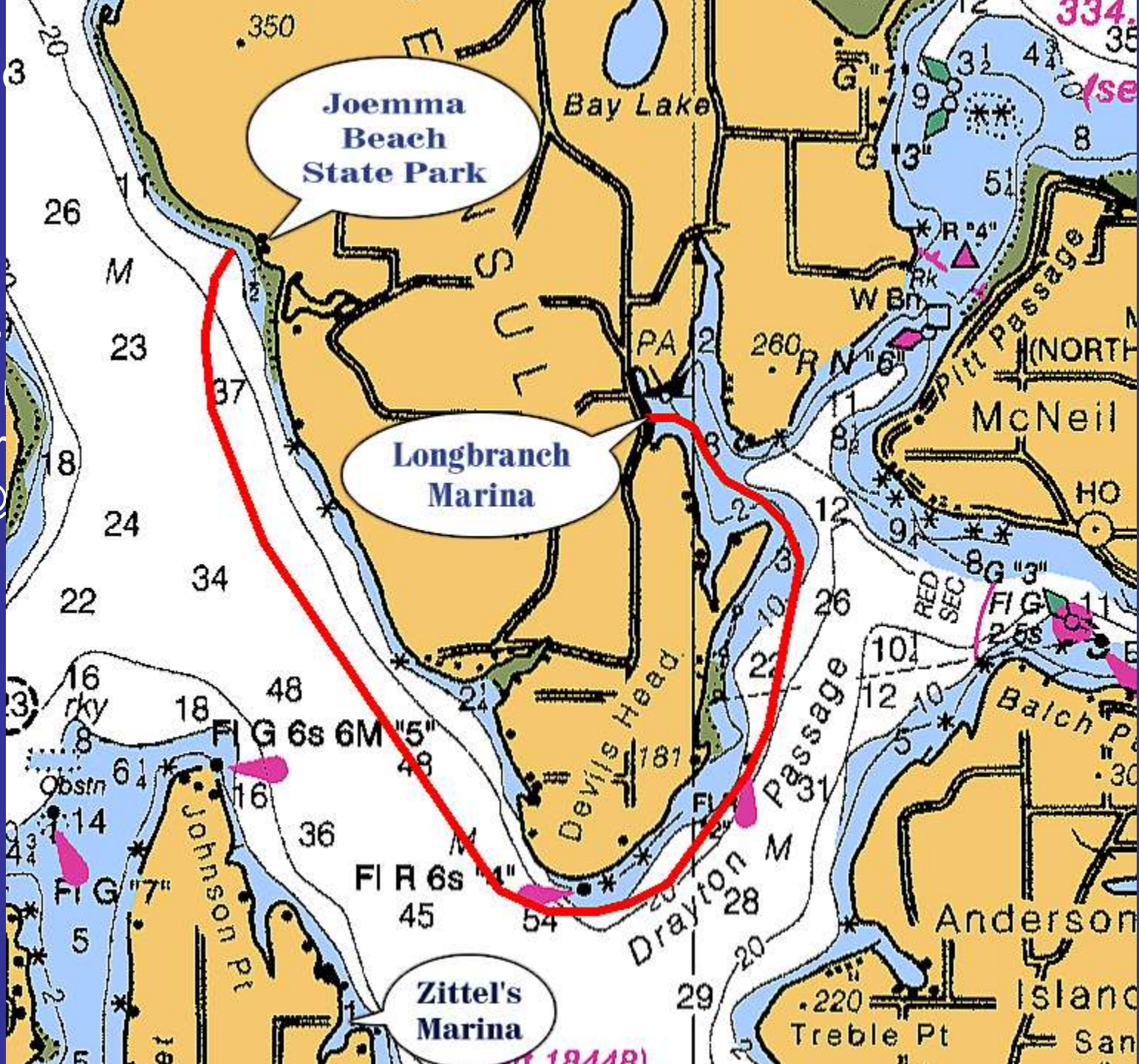


# Dock at Joemma Beach State Park





• J  
• 8.  
• O hr  
@





# Zittel's Marina Launch Ramp





# Zittel's Marina Launch Sling





# Longbranch Marina in Filucy Bay





# Sign-in at Longbranch Marina





# In Longbranch Marina





# Longbranch Marina





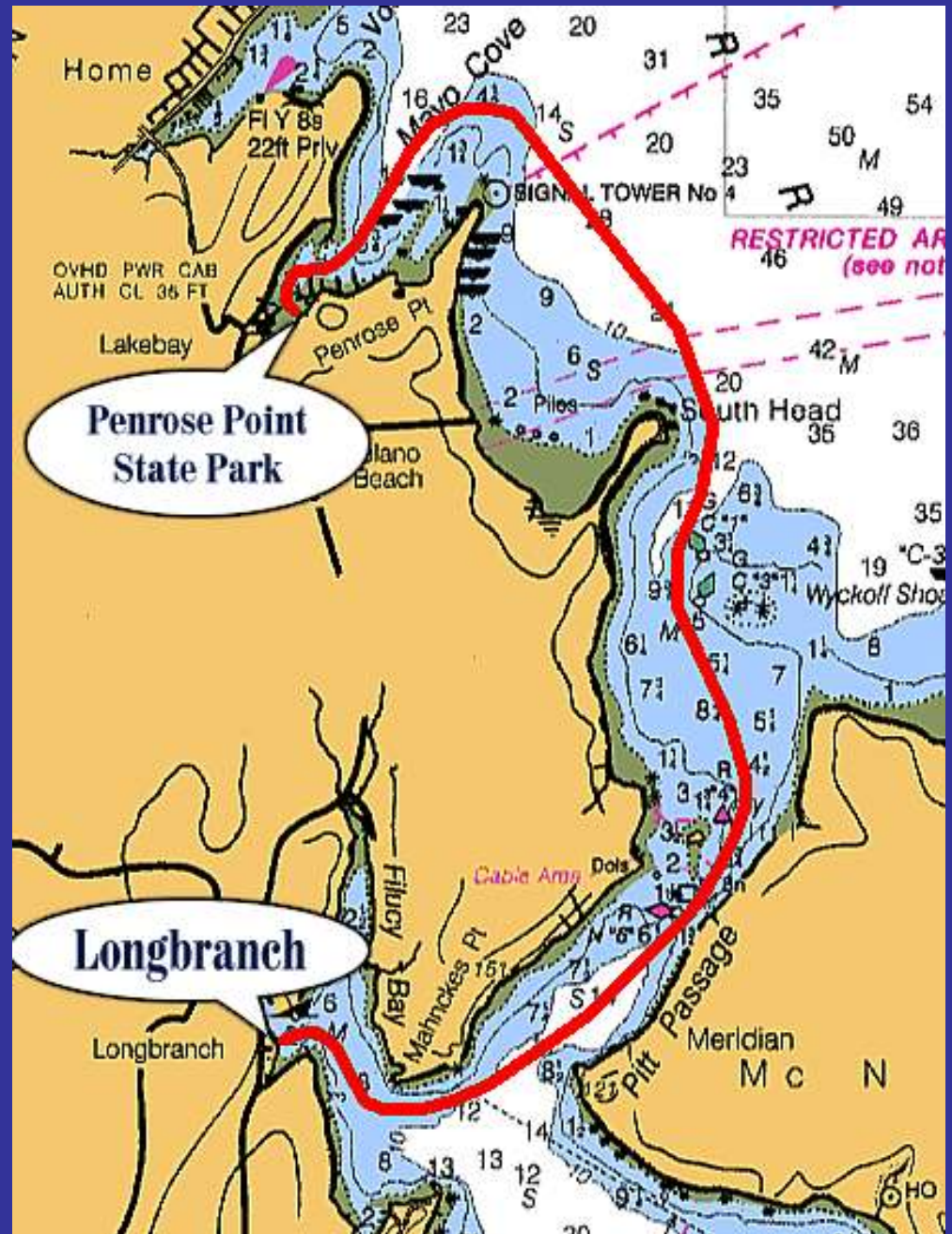
# Anchorage in Filucy bay





- Longbranch to Penrose Point State Park

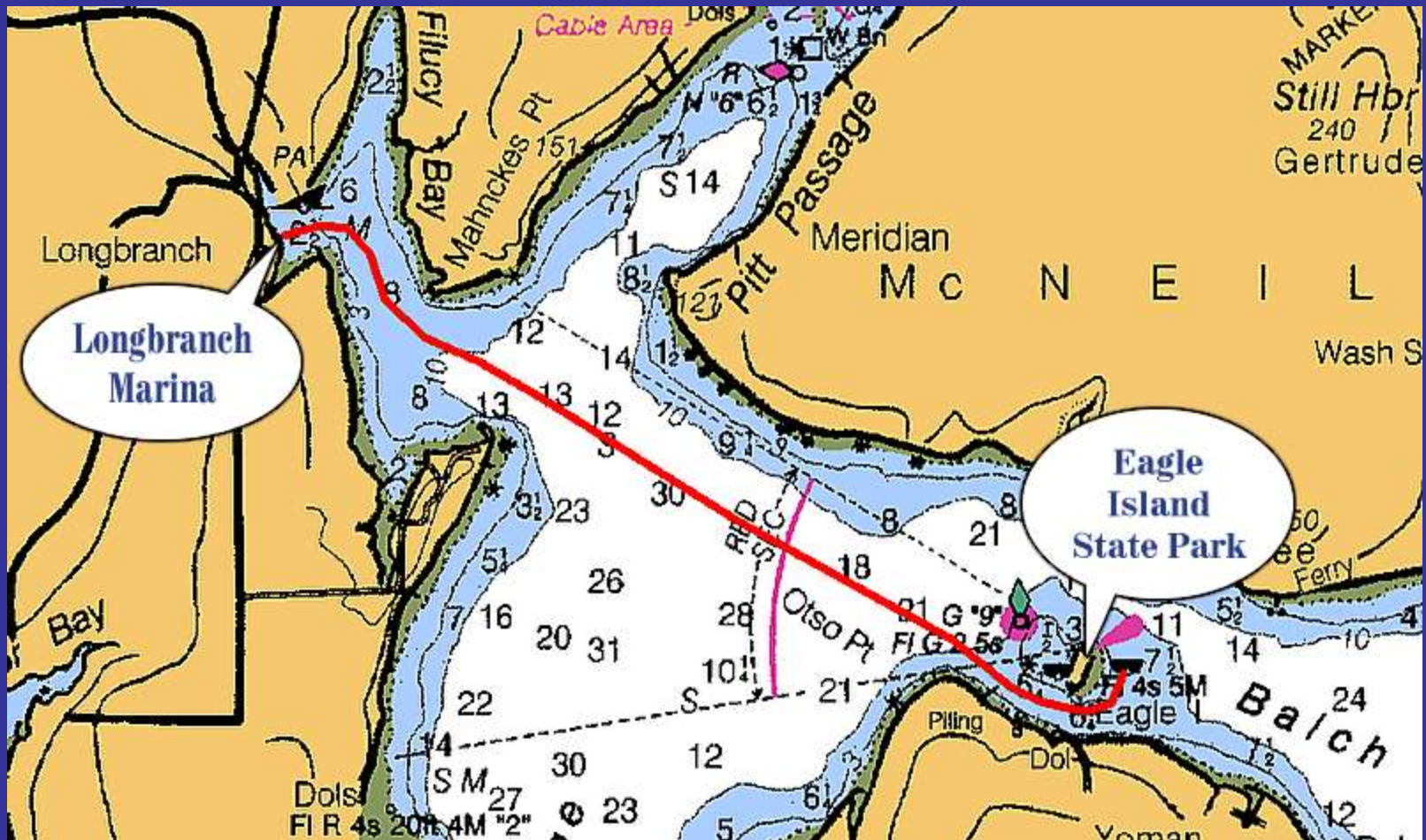
- 6.9 nm
- Via Pitt Passage
- 59 min @ 7.0 knots





# Longbranch to Eagle Island

- 3.1 nm - 26 min @ 7.0 knots





# Eagle Island Marine State Park





# Buoys on West Side





# Rope Swing on Eagle Island





# Reef Along West Side





# Kayakers on Eagle Island





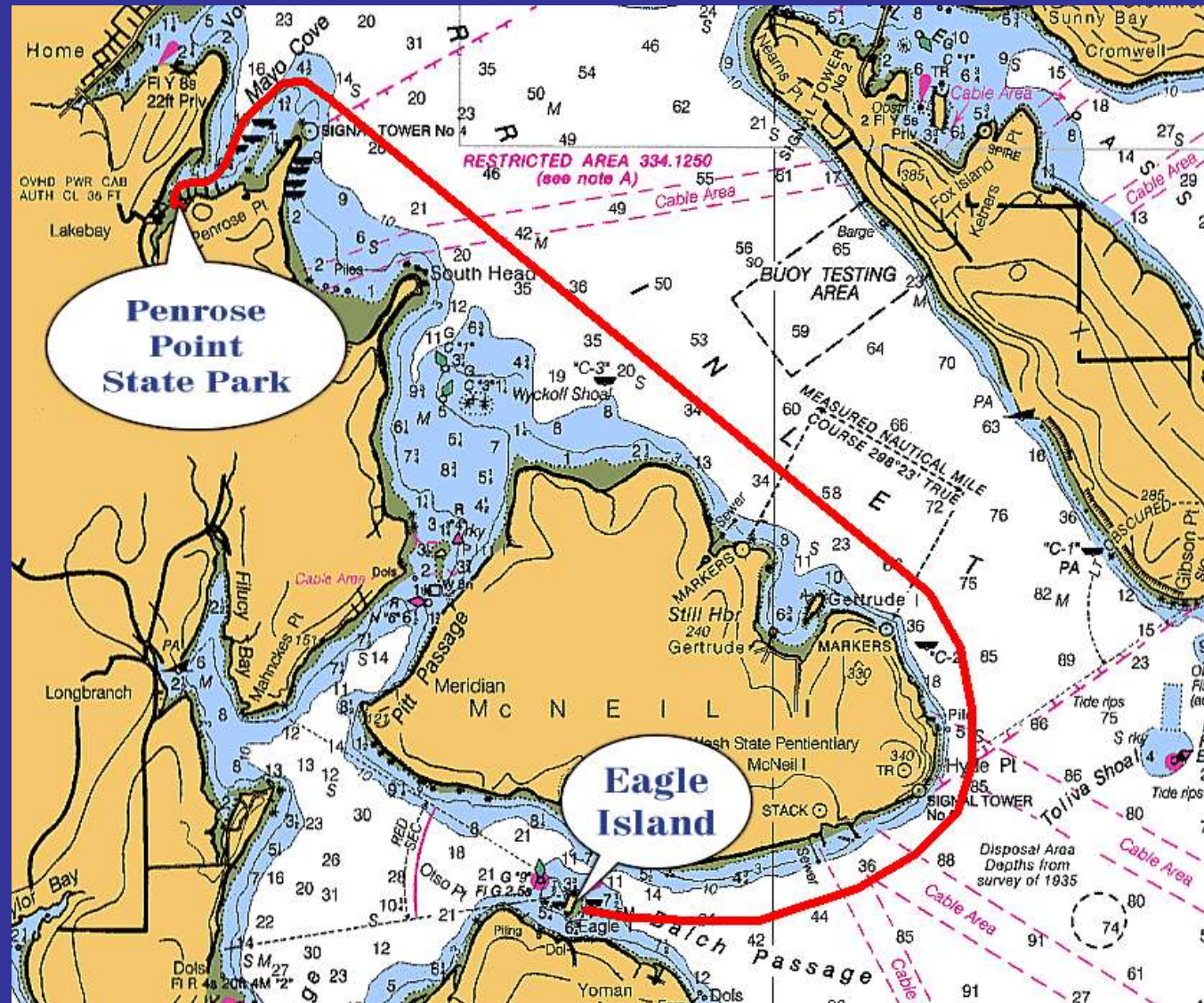
# Boaters on Eagle Island





# Eagle Island to Penrose Point State Park

- 9.9 nm
- One hour  
25 min @  
7.0 knots





# Passing McNeil Island Prison





# Penrose Point State Park Dock





# On the Dock





# Sign-in Please

**BOATERS**  
ALL BOATS MOORED HERE DAY OR NIGHT  
MUST PAY FEE AND REGISTER DAILY  
WITH PARK RANGER AT PAY STATION

**MOORAGE RULES**

1. CONSERVE SPACE - MOOR CLOSE TO OTHER BOATS
2. "RAFTING" PERMITTED - NOT REQUIRED, LIMITED TO 3 BOATS (INCLUDING BOATS MOORED TO DOCK)
3. CONTINUOUS MOORAGE LIMITED TO 3 CONSECUTIVE NIGHTS (UNLESS OTHERWISE POSTED)
4. DINGHYS - MOOR ONLY IN DESIGNATED AREAS
5. DEVICES WITH OPEN FLAME OR COALS PERMITTED ON DOCKS OR FLOATS ONLY WHEN ON A FIREPROOF BASE, LOCATED AWAY FROM FUEL TANKS OR VENTS
6. NO RESERVING OF MOORAGE SPACE
7. FAILURE TO REGISTER MAY RESULT IN FINE AND/OR FORFEITURE OF MOORAGE
8. USE OF THESE FACILITIES BY COMMERCIAL VESSELS RESTRICTED TO LOADING AND UNLOADING PASSENGERS
9. PASS / PERMIT HOLDERS MUST REGISTER

 **CHECK OUT TIME IS 1PM**

**BOATERS:**  
UPON ARRIVAL  
CHECK IN  
REQUIRED AT  
PAY STATION

Washington State Parks and Recreation Commission

**MOORAGE FEE AREA**

Dock/Float \$0.50 per foot/per day  
(minimum \$10.00)

BUOY/LINEAR \$10.00 each boat/per day

FEE IS REQUIRED OF ALL BOATERS  
1:00 pm TO 8:00 am

REGISTER WITHIN 30 MINUTES OF ARRIVAL

Check Out Time 1:00 pm  
For Annual Permits, contact Park Staff  
All Pay Instruction and Fees are posted by Pay Station.



# Dock in Mayo Cove





# Registration





# On the Dock





# Winter Visit





# Winter Foliage





# Penrose Point State Park





# Picnic Area by the Dock





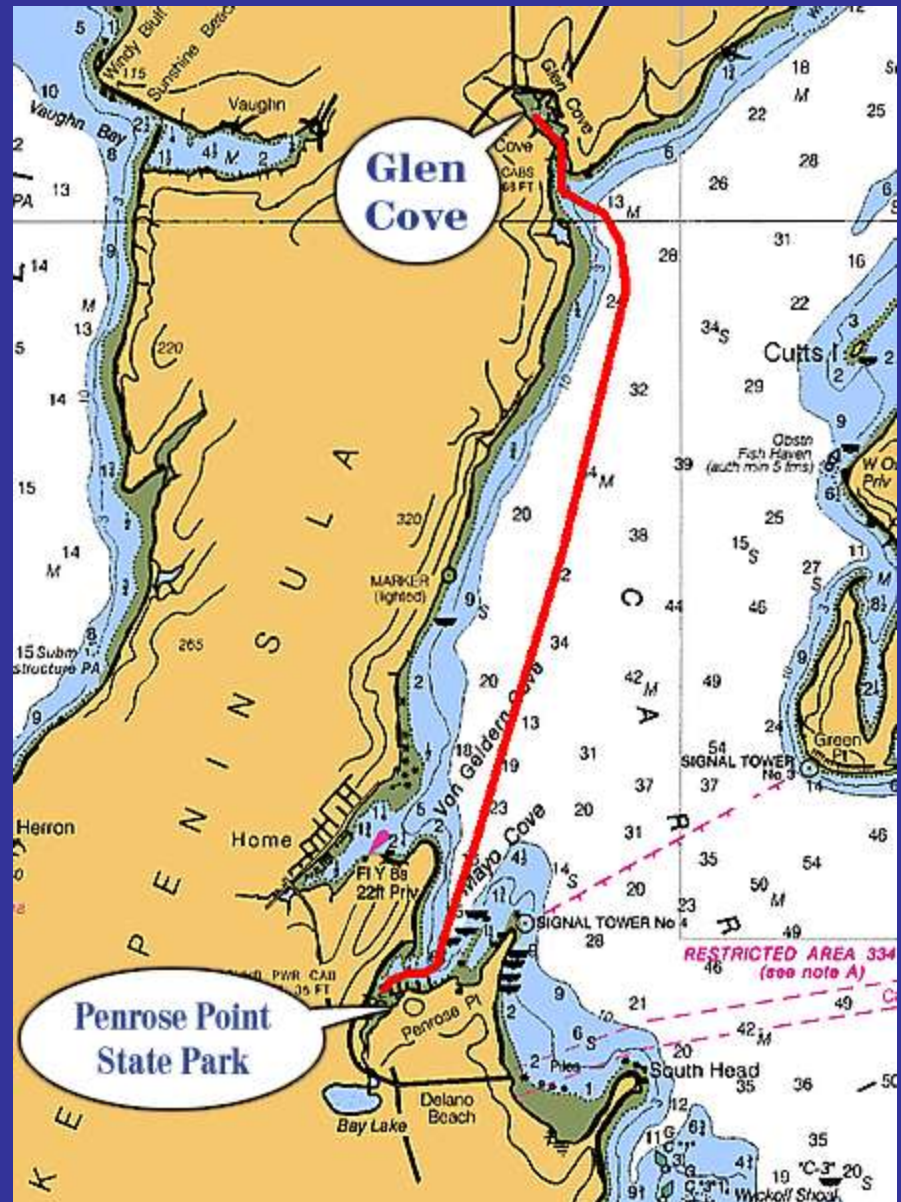
# Another Picnic Area





# • Penrose Point State Park to Glen Cove

- 5.7 nm
- 49 min @ 7.0 knots





# Ye Olde Glen Cove Hotel





# Kayakers in Glen Cove





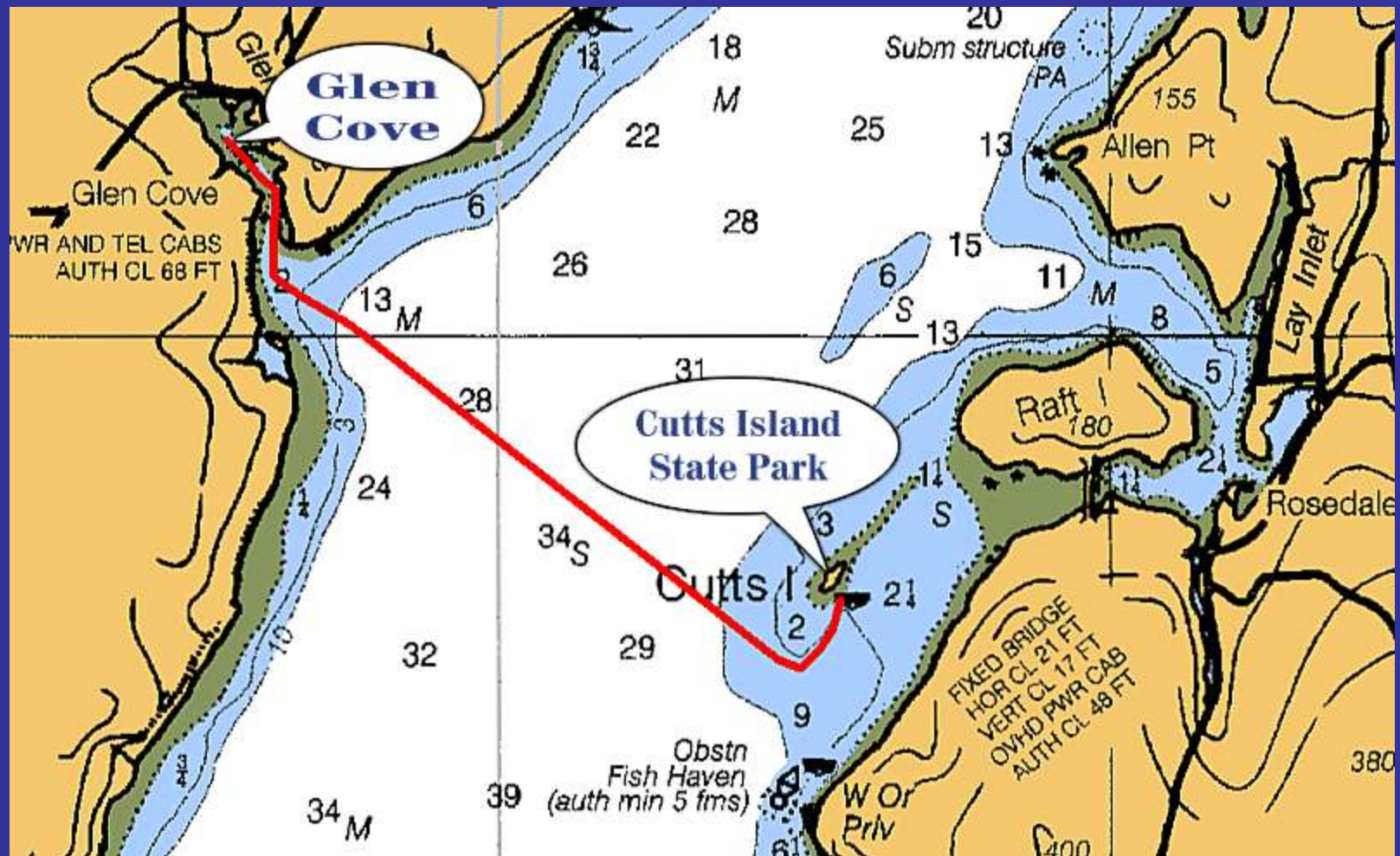
# YMCA Camp Seymour in Glen Cove





# • Glen Cove to Cutts Island

- 2.8 nm - 24 min @ 7.0 knots





# Cutts Island, Marine State Park





# Cutts Island, Marine State Park





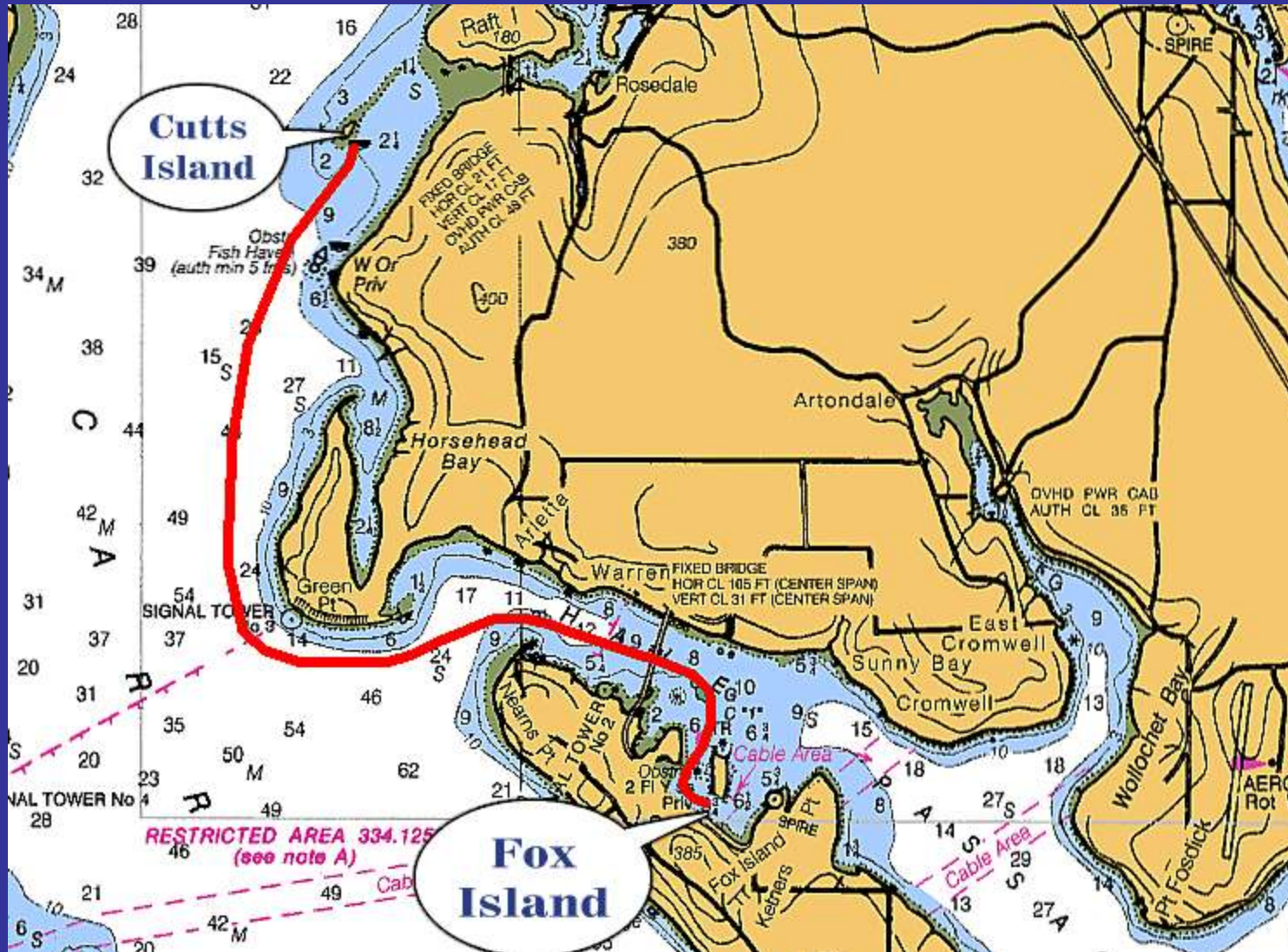
# Cutts Island, Marine State Park





# • Cutts Island to Fox Island

- 5.7 nm
- 49 min  
@ 7.0 kt





# Fox Island Bridge in Hale Passage





# Fox Island Bridge in Hale Passage





# Tanglewood Island Pavilion





# Tanglewood Island





# Tanglewood Island Light House on Hale Passage





# Tanglewood Cove Fish Farm





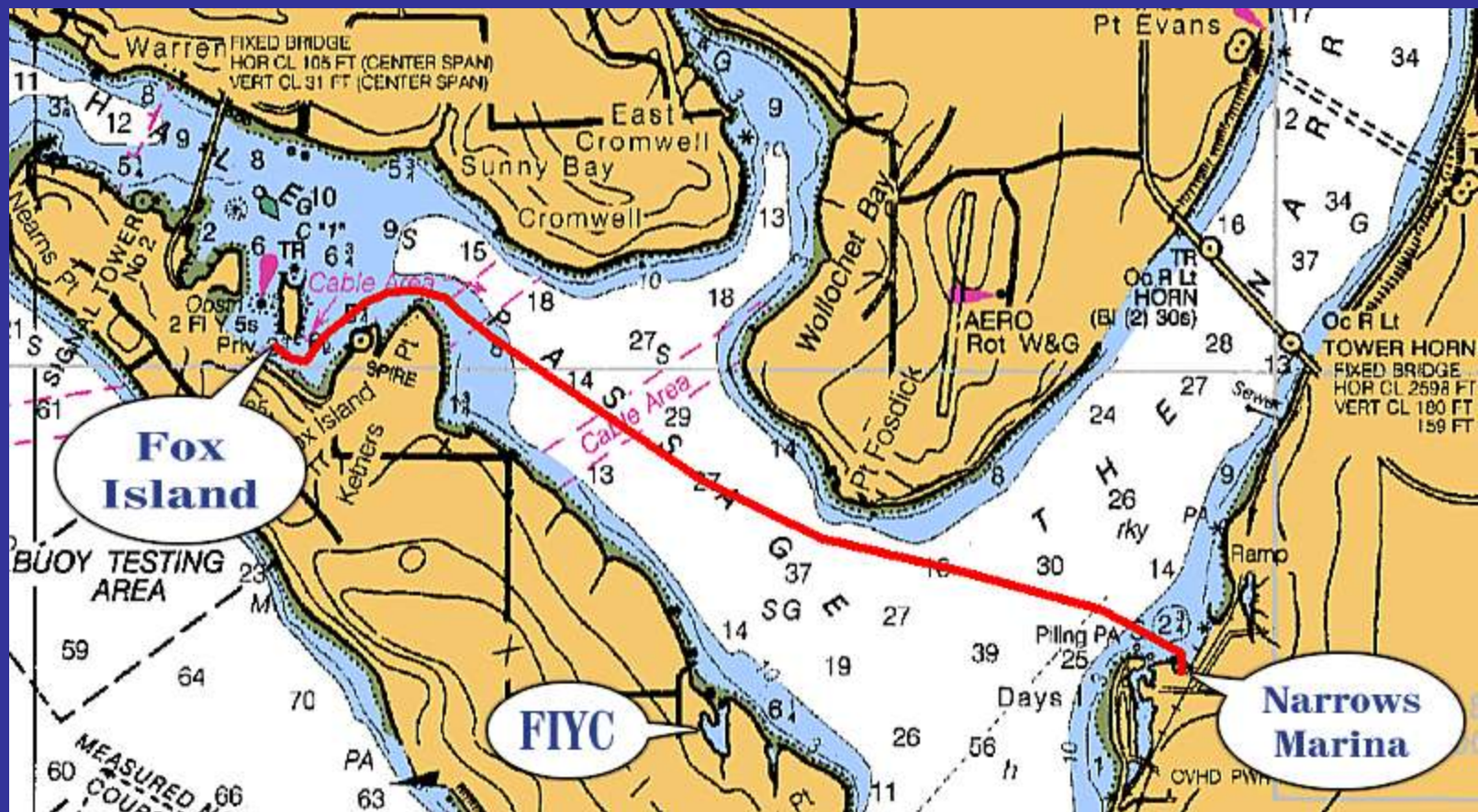
# Anchorage Behind Tanglewood Island





# Fox Island to Narrows Marina

- 4.1 nm – 35 min @ 7.0 knots





# Servicing the Buoy in Hale Passage





# Former Ferry Landing on Fox Island





# Mount Rainier From Hale Passage



JUN 16 2004



# Fox Island Yacht Club in Cedrona Cove





# Fox Island Yacht Club in Cedrona Cove





# Fox Island Yacht Club in Cedrona Cove





# Rounding Point Fosdick





# Fox Island Fishing Pier





# Tow Boat in the Tacoma Narrows





# Approaching Narrows Marina





# Approaching Narrows Marina





# Narrows Marina





# Narrows Marina Fuel Dock





# Police Recovery of Stolen Boats





# Day Island Yacht Club





- Narrows Marina to Gig Harbor

- 5.9 nm
- 51 min @ 7.0 knots





# Point Fosdick Across from Narrows Marina





# Titlow Beach





# Old Ferry Landing at Titlow Beach





# Canoe in Tacoma Narrows





# Before the Second Tacoma Narrows Bridge





# Second Tacoma Narrows Bridge Under Construction





# Second Tacoma Narrows Bridge Under Construction





# Second Tacoma Narrows Bridge Under Construction





# Approaching Point Defiance





# The Schooner Adventuress in the Tacoma Narrows





# Entering Gig Harbor





# Little Tug in Gig Harbor





# Tides Tavern





# Gig Harbor City Dock





# Fishermans Memorial





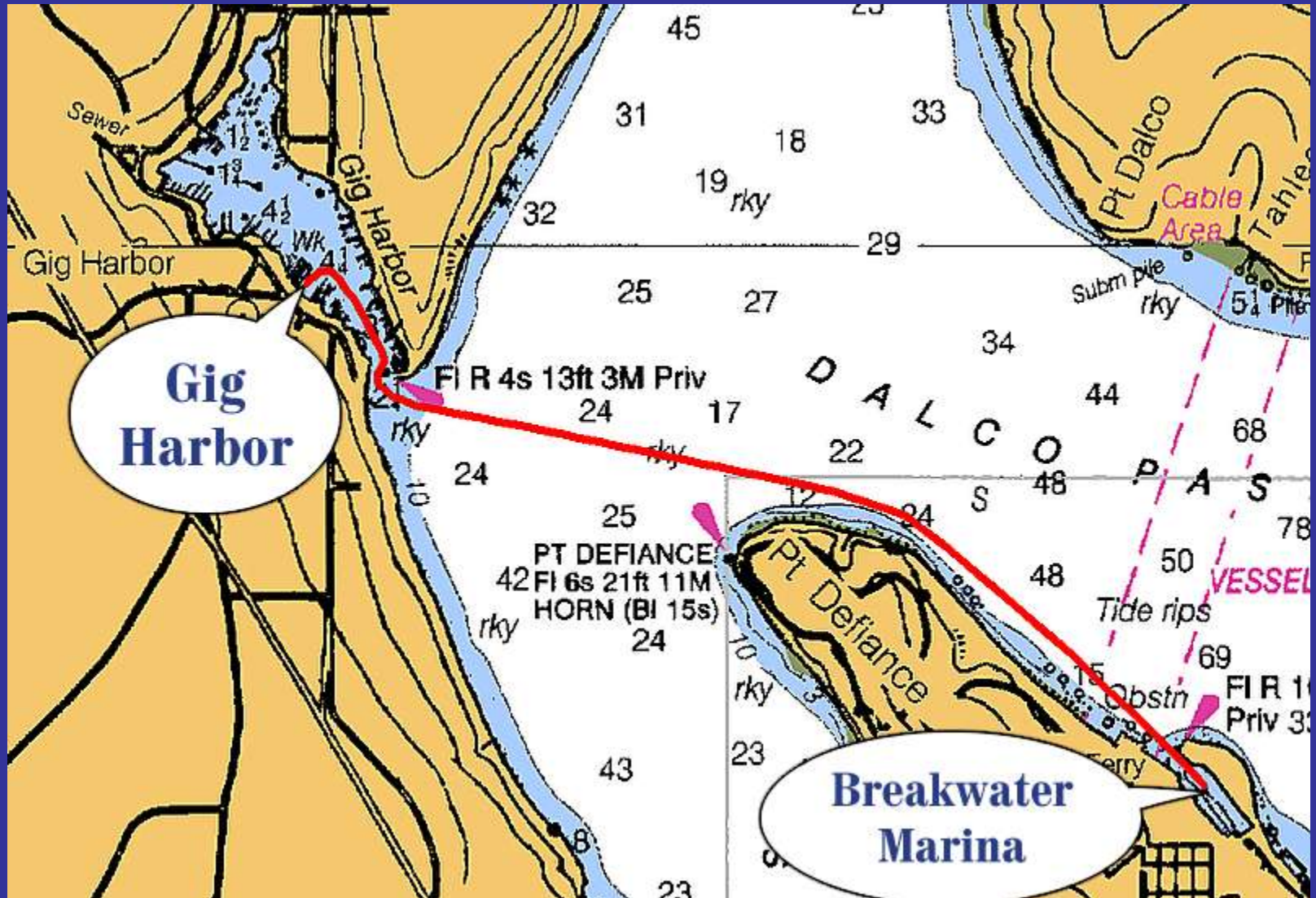
# Arabella's Landing





# Gig Harbor to Breakwater Marina

- 3.5 nm – 30 min @ 7.0 knots





# Tacoma Fireboat and Coast Guard Patrol at Point Defiance





# Point Defiance Park





# Point Defiance Ferry Terminal





# Point Defiance Launch Ramps





# Breakwater Marina Fuel Dock









# Entering Thea Foss Waterway





# 11<sup>th</sup> Avenue Bridge





# Thea Foss Waterway





# Moorage on Thea Foss Waterway





# Along the Thea Foss Waterway



MAY 15 2007



## DOCK STREET

MARINA

# NORTH PIER

- ➔ Public pier for recreational boats and seaplanes only.
- ➔ Two hour maximum stay.
- ➔ No overnight moorage.
- ➔ No water, electric, trash removal or pumpout services provided.
- ➔ Please leave dock shipshape.
- ➔ For emergencies dial 9-1-1.

Commercial vessels intending to pick up or drop off passengers must make advanced reservations at least 24 hours in advance - usage fees apply. Private recreational boats and seaplanes take precedence.

Marina Office (253) 272-4352

# Dock Street Marina, North Pier

MAY 15 2007



# Dock Street Marina North Pier





# Approaching Dock Street Marina, South





# Union Station, Tacoma





# Dock Street Marina, South





# In the Dock Street Marina, South





# Facilities in Dock Street Marina





# Glass Museum from Dock Street Marina





# Entrance to Museum of Glass





# Cable Stay Bridge





# Along the Thea Foss Waterway

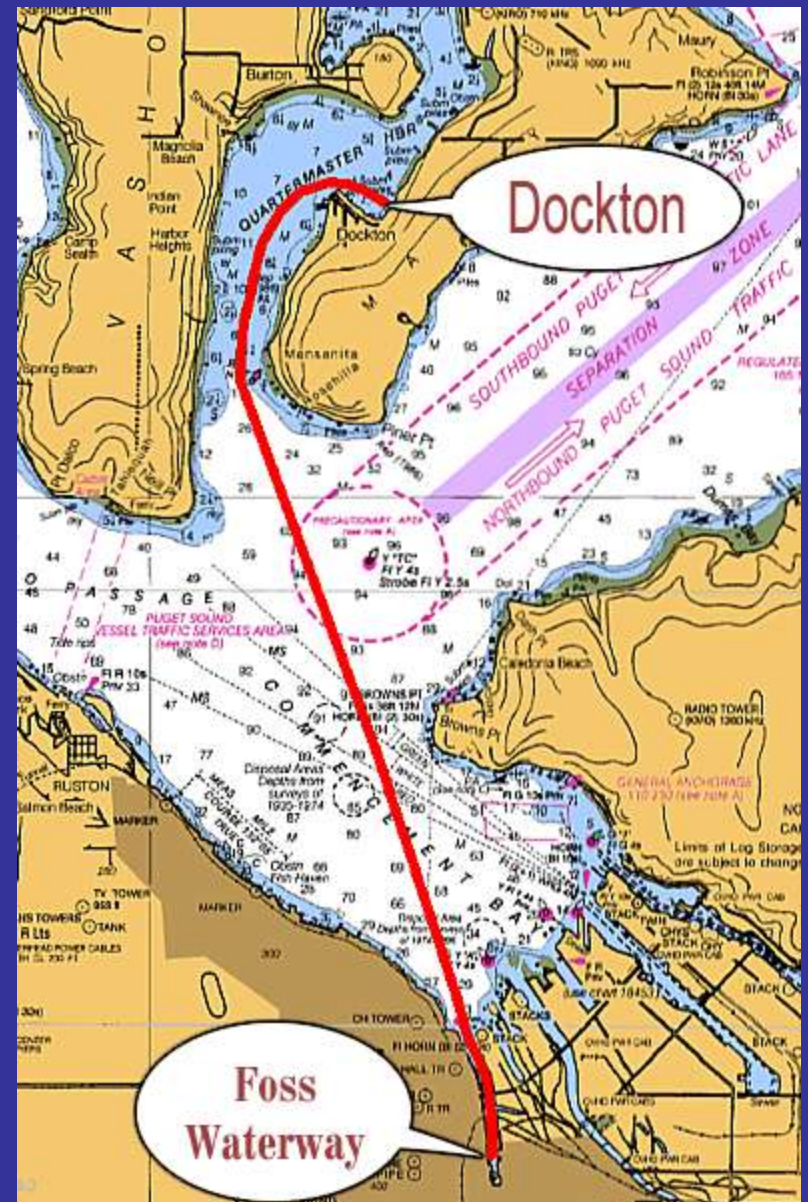


MAY 15 2007



# Tacoma Thea Foss Waterway to Dockton

- 8.9 nm – One hour 16 min @ 7.0 knots





# Leaving the Thea Foss Waterway





# Dockton Moorage









# Dockton Moorage





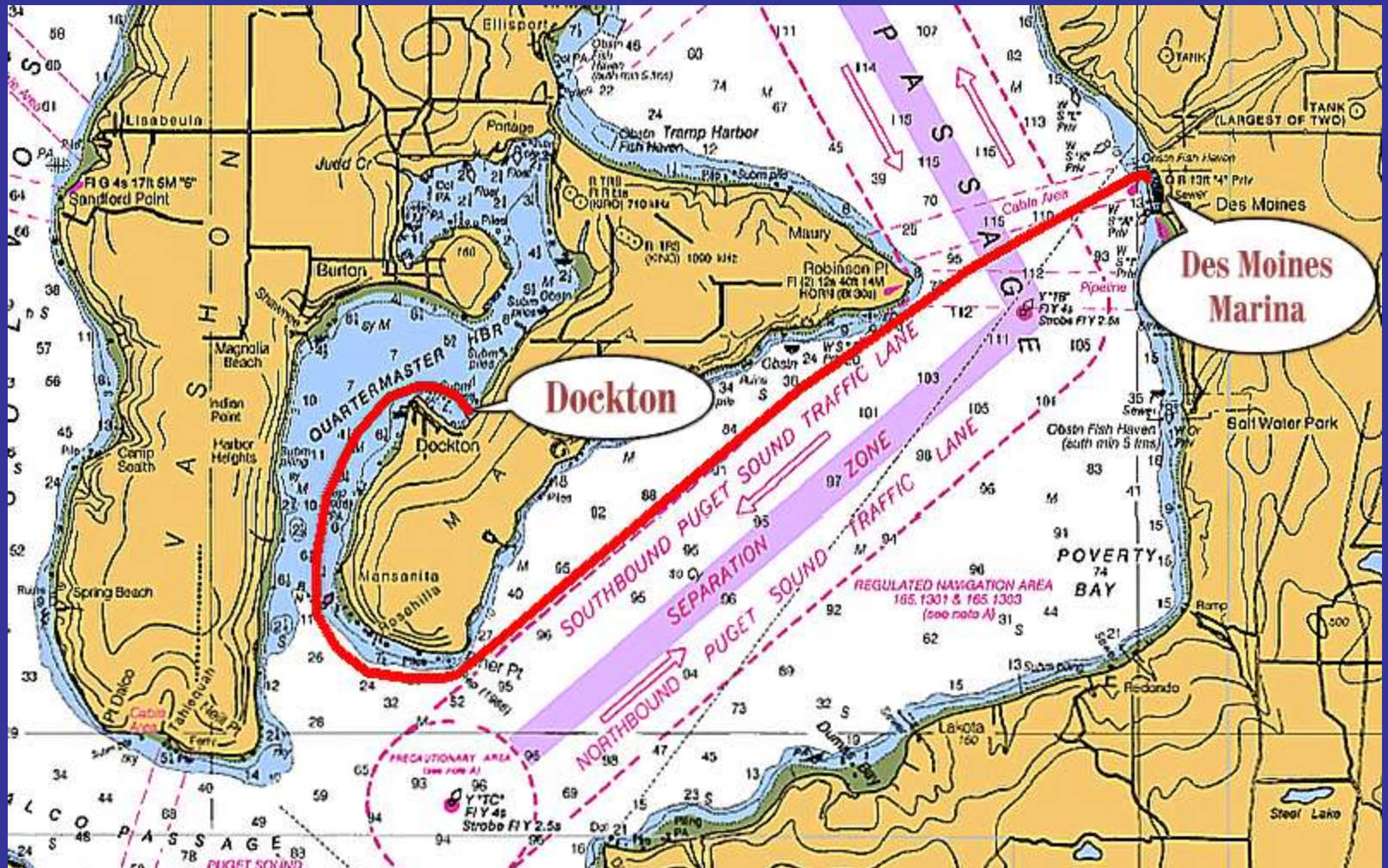
# Sunset Over Dockton





# Dockton to Des Moines Marina

- 10.0 nm - One hour 26 min @ 7.0 knots





# Mount Rainier Over Poverty Bay





# Point Robinson, Maury Island





# Point Robinson, Maury Island





# Approaching Des Moines Marina





# Entering Des Moines Marina





# Des Moines Marina Fuel Dock





# Former Launch Sling in Des Moines Marina





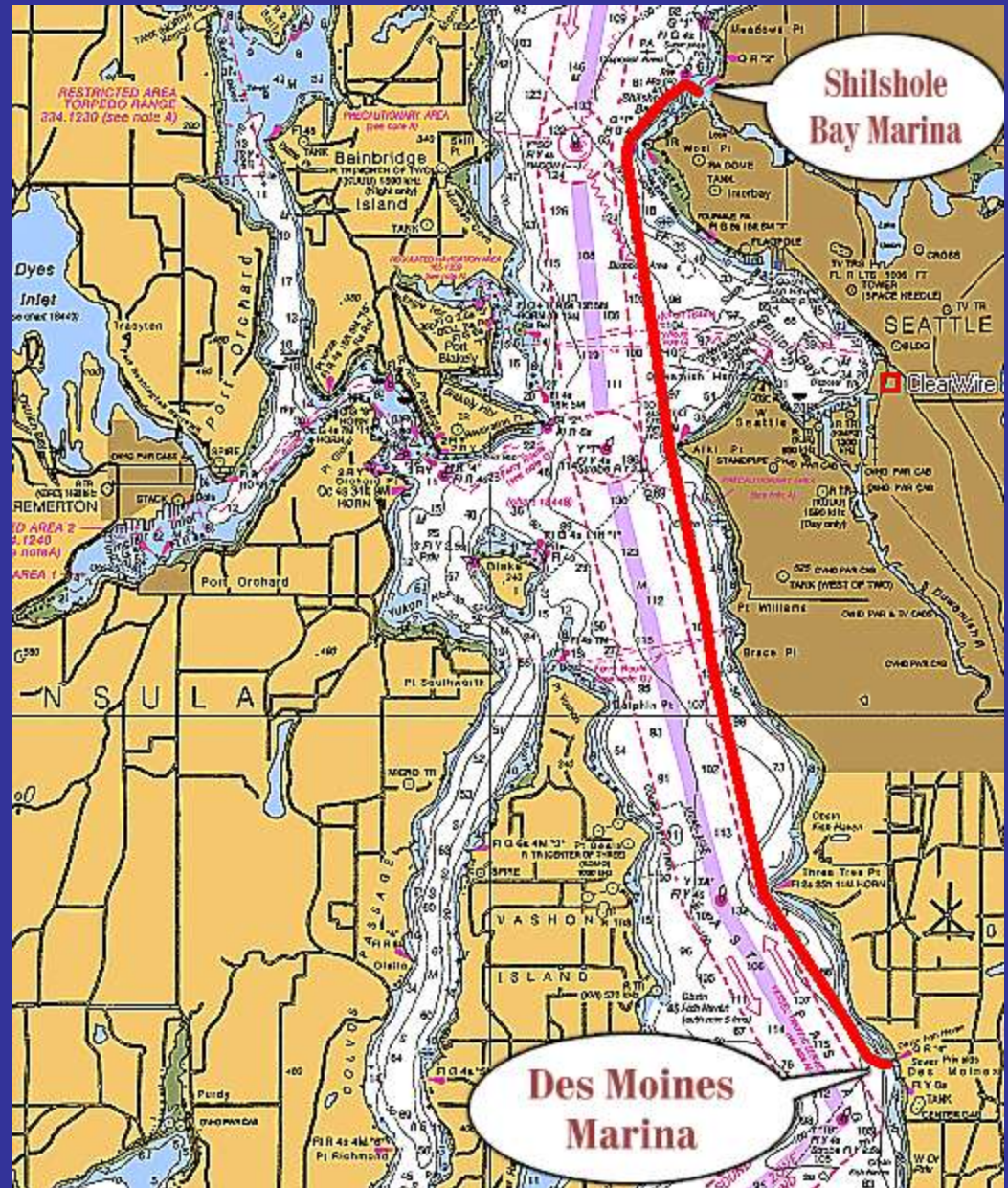
# Statue in Des Moines Marina





# Des Moines Marina to Shilshole Bay

- 18.4 nm
- 2 hr 38 min  
@ 7 knots





# Overall Cruise

- 128.4 nm
- 18 hours 21 min.  
@ 7.0 knots



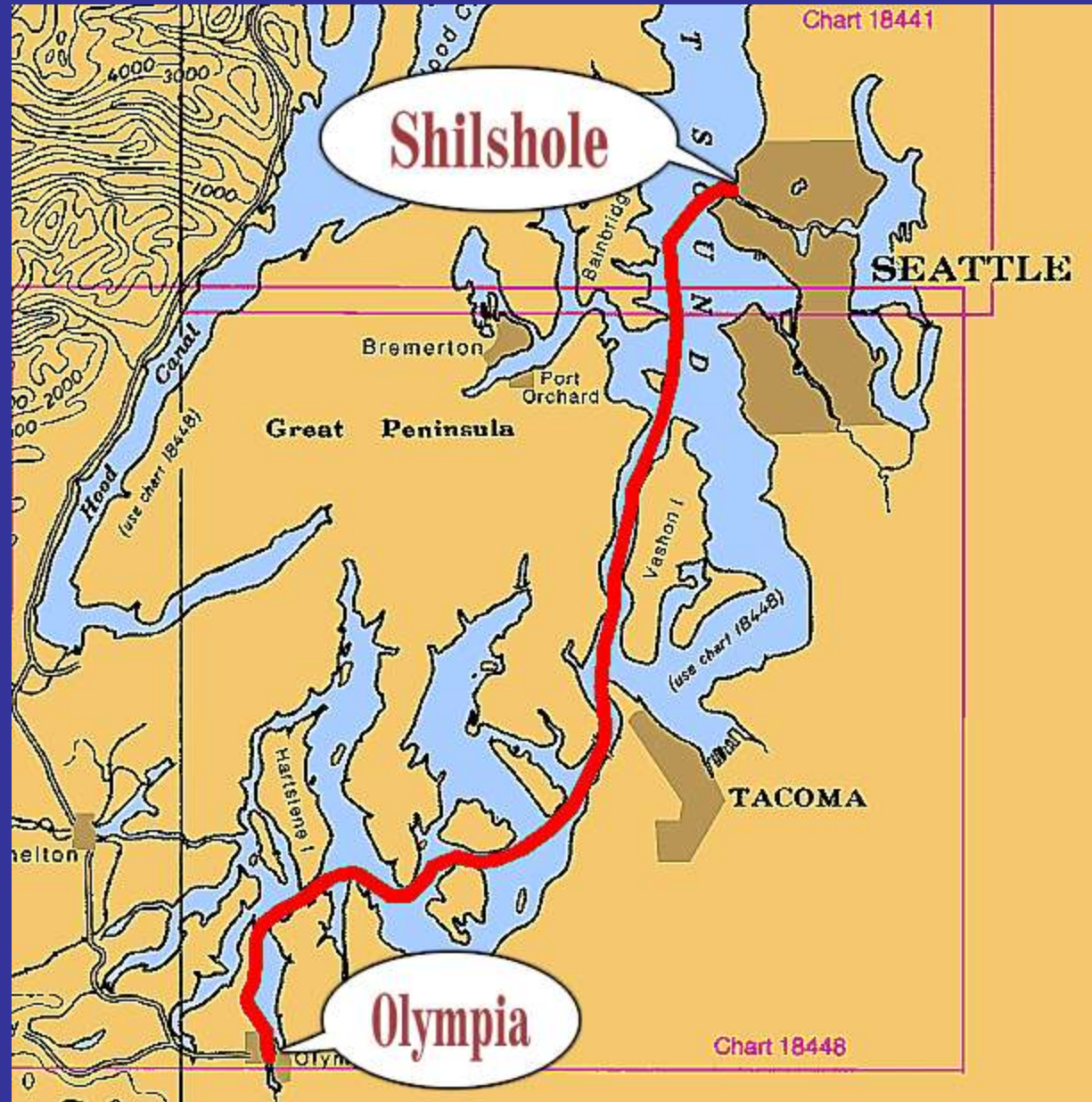


# Shortest Return

- 51.6 nm
- 7 hours  
22 min  
@ 7.0 kn



Shilshole Bay Marina





- Very truly yours,

*Carl Tenning*



<http://carlten.net>