

Cruising The Broughton's



By Carl Tenning



<http://carlten.tripod.com>

Broughton's Archipelago

Blind Channel

CANADA

ISLAND

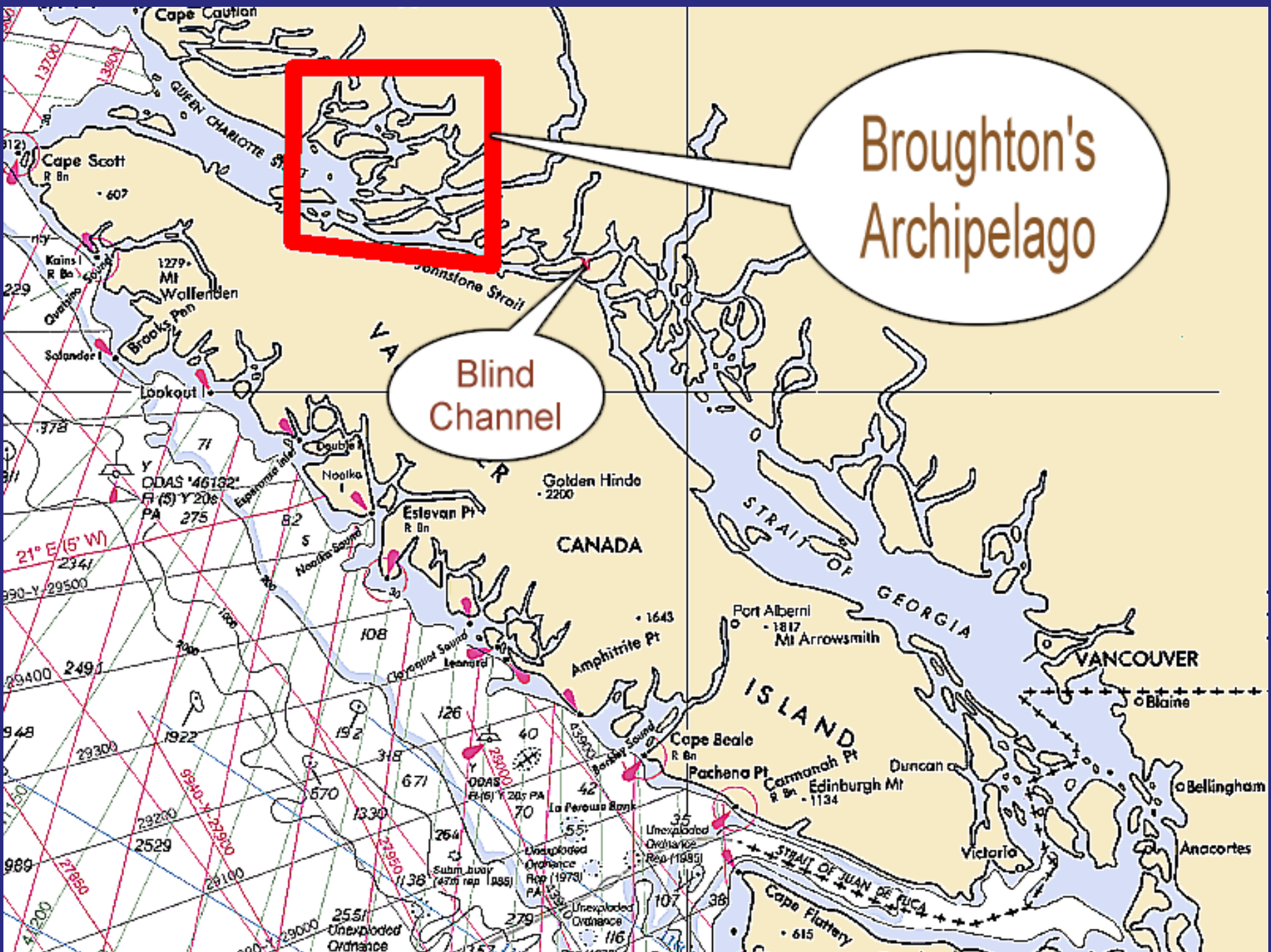
STRAIT OF GEORGIA

VANCOUVER

STRAIT OF JUAN DE FUCA

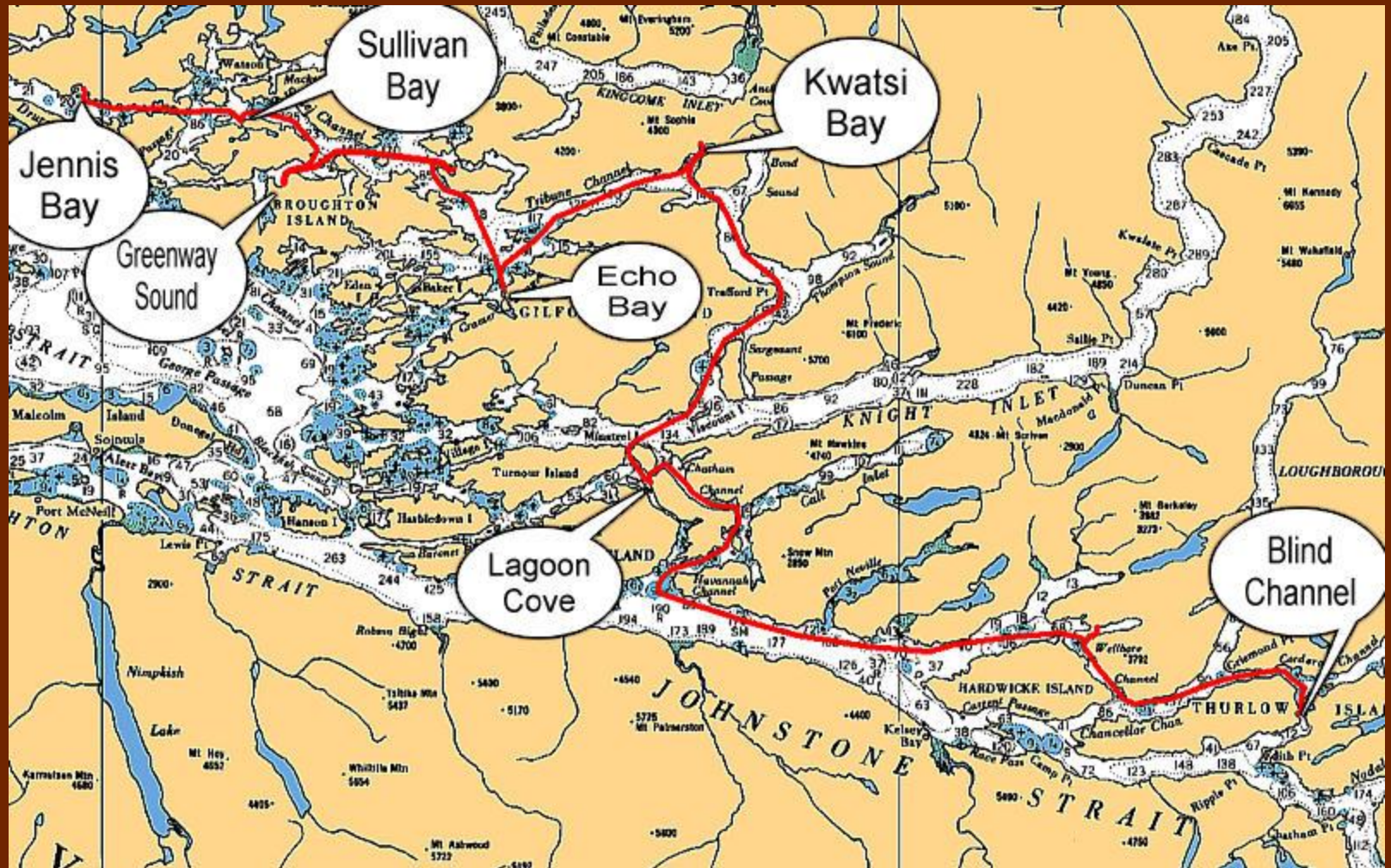
Bellingham

Anacortes



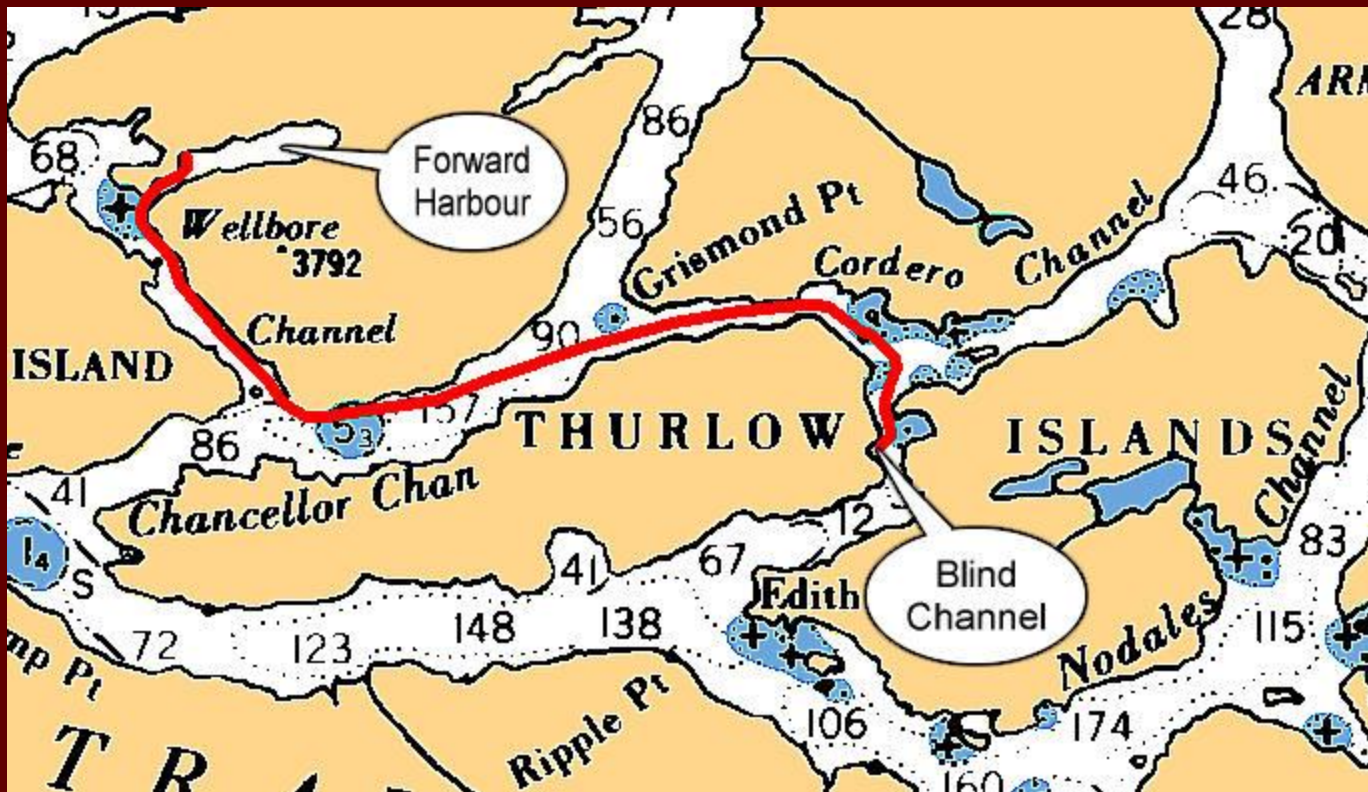
Cruising the Broughton's

- CHS Charts: 3515, 3543, 3544, 3545, 3547, 3564



Blind Channel to Forward Harbour

- 15.0 nm
- 2 hours 9 min.
@ 7.0 knots
- CHS Charts
3543 and 3544



Blind Channel is approximately a 243 nm cruise from Seattle.

Rapids to Contend With:

- Greene Point Rapids
- Whirlpool Rapids

- Kenmore Air in Blind Channel



- Leaving Blind Channel Marina



- Anchored in Douglas Bay, Forward Harbour

14.9 nm from
Blind Channel
2hr 7min
@ 7.0 knots

Through
Green Point
Rapids and
Whirlpool
Rapids

Stopover
for awaiting
calm winds
in Johnstone
Strait



- Douglas Bay in Forward Harbour

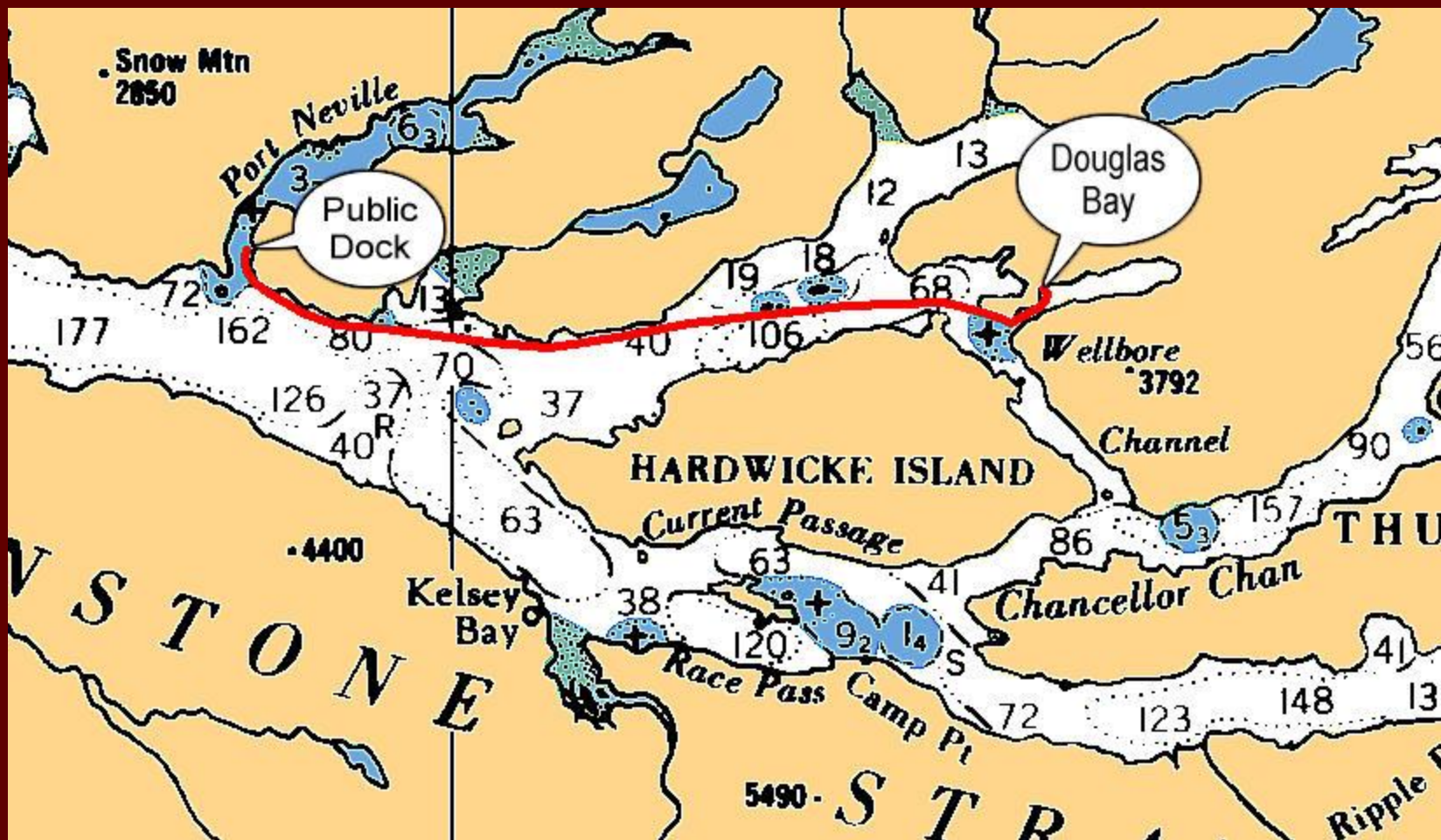


- Anchored in Forward Harbour



Forward Harbour to Port Neville

- 13.8 nm
- 1 hour 58 min.
@ 7.0 knots
- CHS Charts
3544 and 3545



- Arriving in Port Neville



- A Visit to Port Neville



- Visiting Port Neville



- Log House in Port Neville



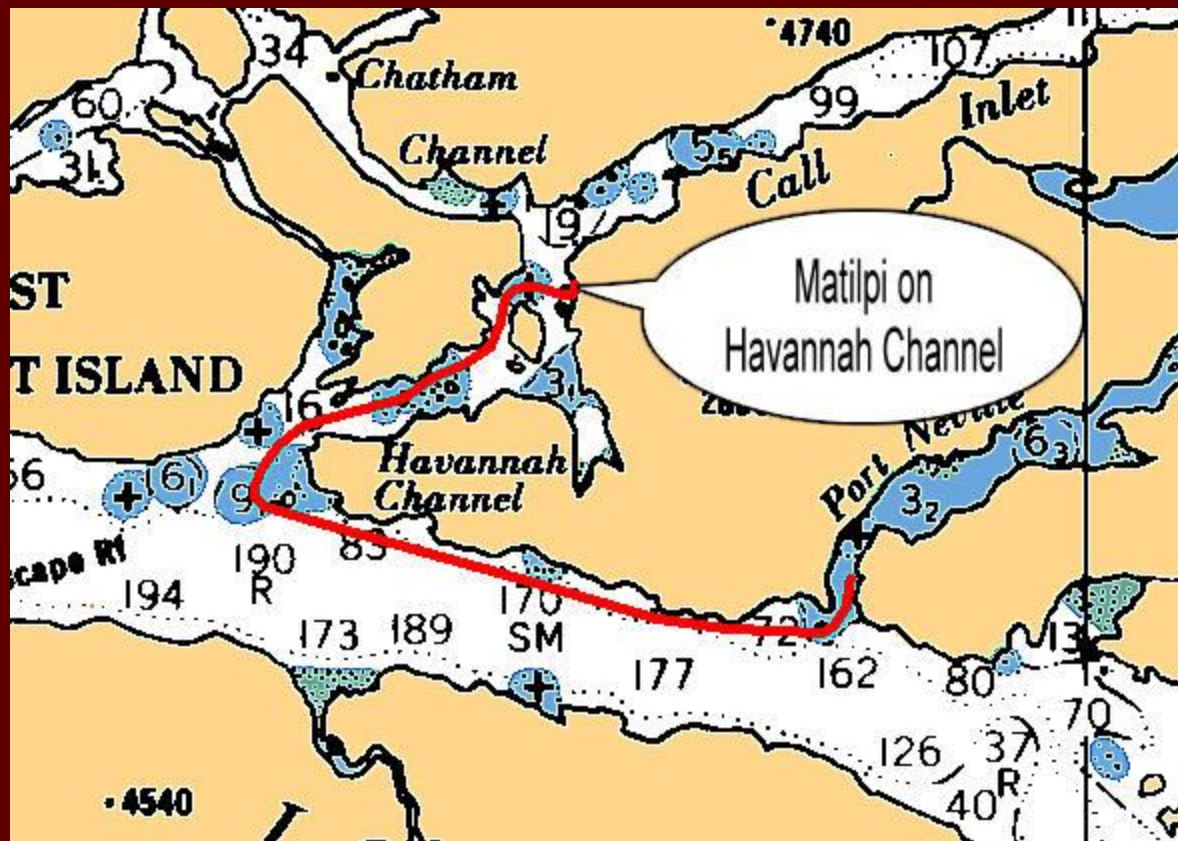
- Post Office in Port Neville



Port Neville to Havannah Channel

- 13.8 nm to Matilpi

- One hour 58 min.
@ 7.0 knots



- CHS Chart 3545

- **Johnstone Strait**



- **A Foreboding Johnstone Strait**



• Rounding the Broken Islands





- Entering Havannah Channel

- An American Tug in Havannah Channel



- Anchored in Matilpi



- Matilpi,
on
Havannah
Channel



27.8 nm from
Douglas Bay,
Forward
Harbour
3hr 58min
@ 7.0 knots

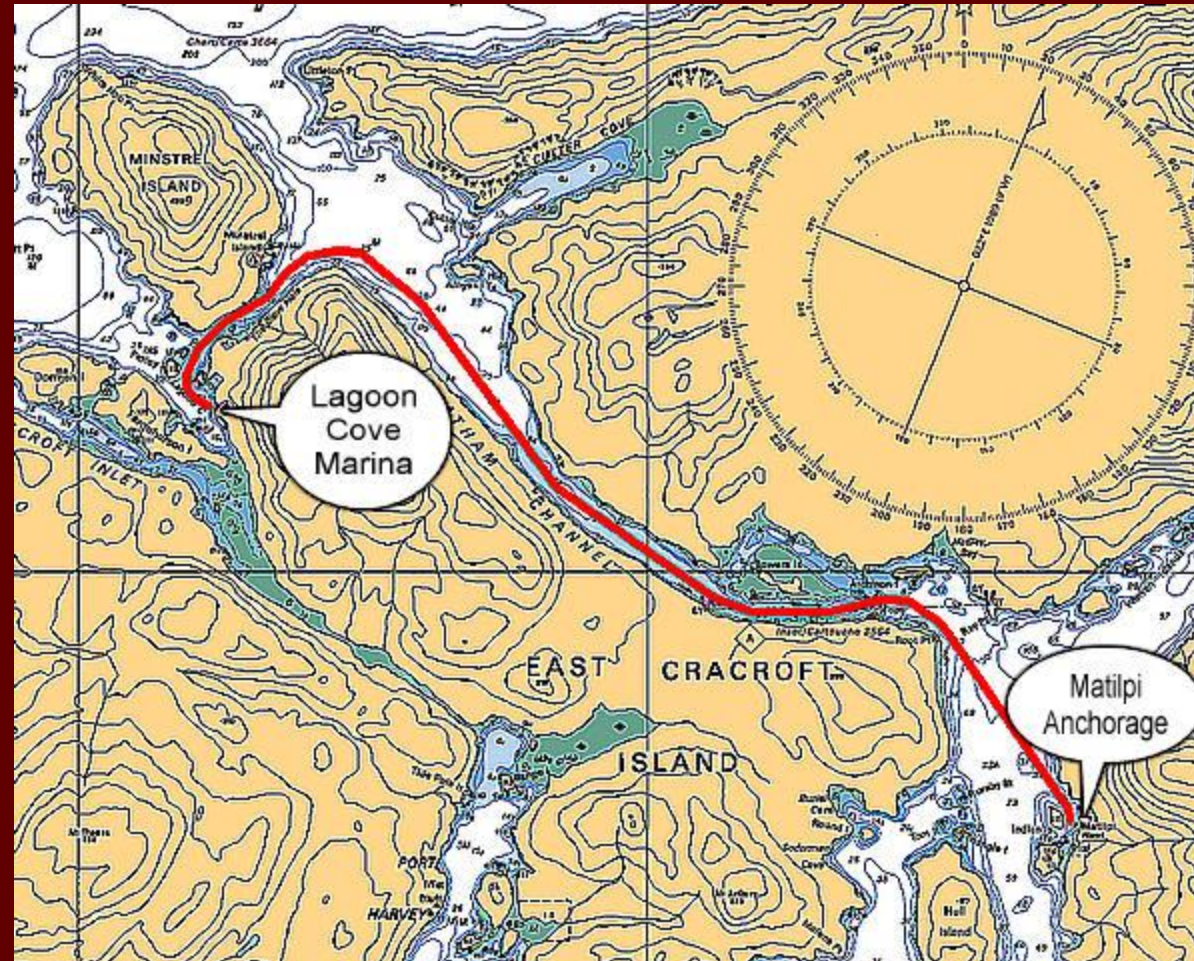
39.4 nm from
Blind Channel
5hr 38min
@ 7.0 knots

- Shore Tie in Matilpi



Havannah Channel to Lagoon Cove

- 7.0 nm
(from Matilpi)
- One hour
24 min.
@ 5.0 knots
- CHS Chart
3545



- **Calm Water in Havannah Channel**



- Chatham Channel



- Approaching Lagoon Cove Marina



- Lagoon
Cove
Marina

East
Craycroft
Island

6.9 nm from
Matilpi
1hr 23min
@ 5.0 knots



• Happy Hour in Lagoon Cove



Trails,
open field,
(possible
camping),
burn barrel.

Fuel,
propane,
water,
ice, and
part time
electric
power.

- Lagoon Cove Marina



- In Lagoon Cove Marina



- Fuel in Lagoon Cove Marina



- The “Black Tie” in Lagoon Cove Marina



- The Yard in Lagoon Cove Marina



- Owners House in Lagoon Cove Marina

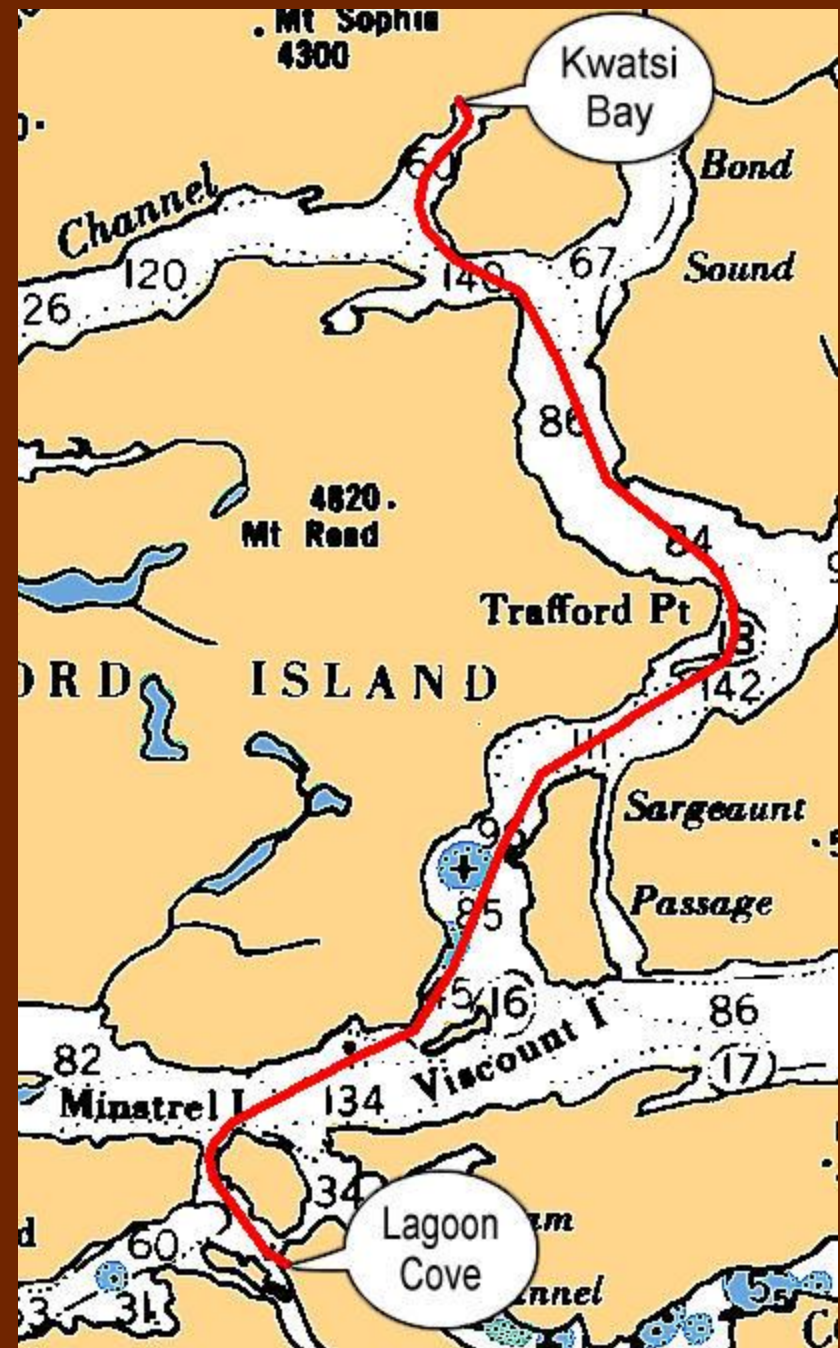


- Looking Towards Clio Channel



Lagoon Cove to Kwatsi Bay

- 22.2 nm
- 3 hours
11 minutes
@ 7.0 knots
- CHS Charts 3515
and 3545



- Looking Back in Tribune Channel



• Tribune Channel Near Kwatsi Bay



- The Entrance to Kwatsi Bay Viewed From Inside the Bay



• Approaching Kwatsi Bay Marina



- In Kwatsi Bay Marina



- Welcome to Kwatsi Bay



JUN 29 2003

- In Kwatsi Bay Marina



- Waterfall in Kwatsi Bay



In Kwatsi Bay





- Kwatsi Bay Marina

Family run marina with moorage and showers



Unlimited
water.

- Kwatsi Bay Marina

North side of Tribune Channel

Kwatsi Bay Marina



- Amenities in Kwatsi Bay Marina



- Pot Luck Dinner

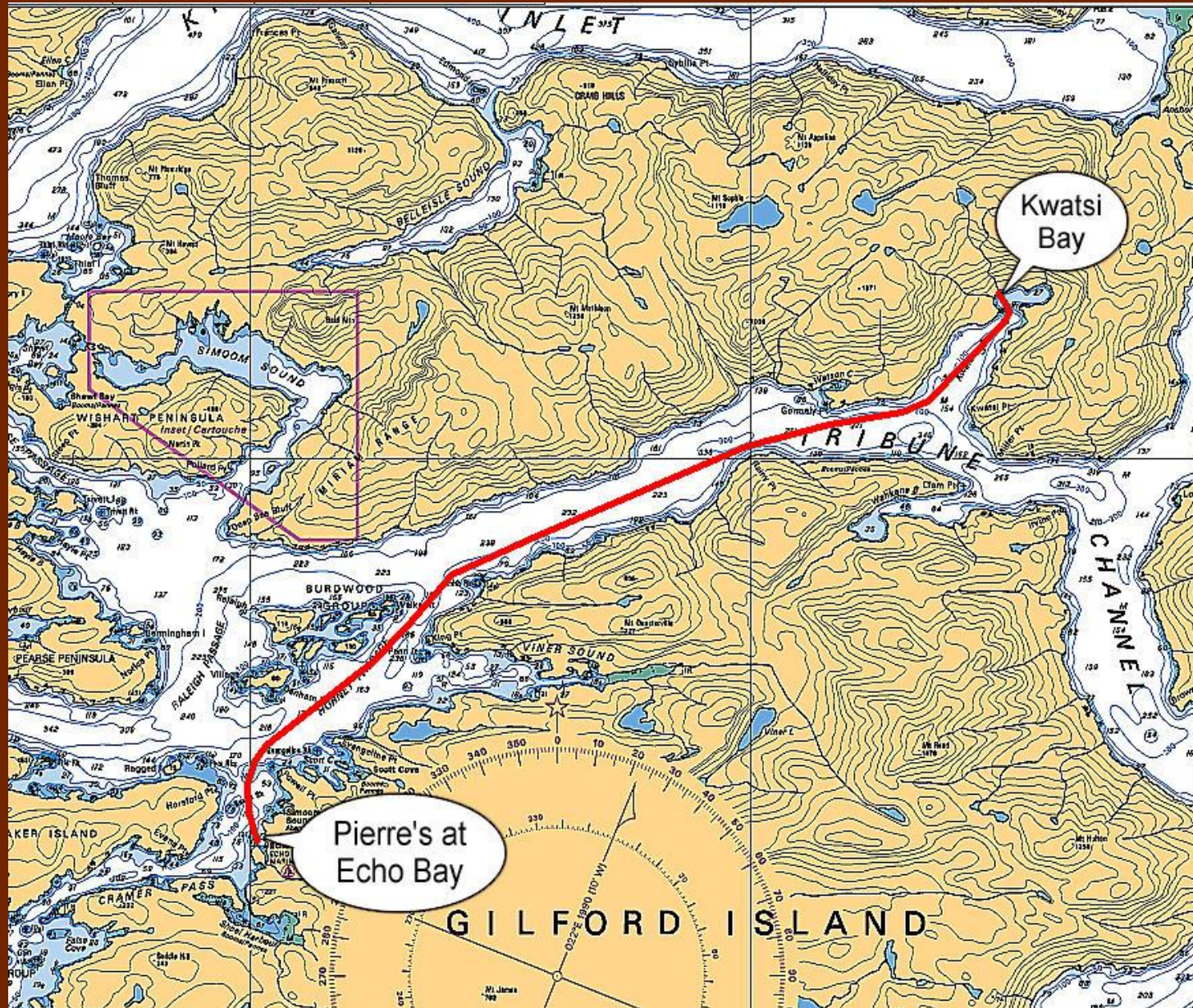
The highlight of Kwatsi Bay



- View From Kwatsi Bay



Kwatsi Bay to Pierre's at Echo Bay



- 12.8 nm
- One hour 50 min. @ 7.0 knots
- CHS Chart 3515

Pierre's at Echo Bay



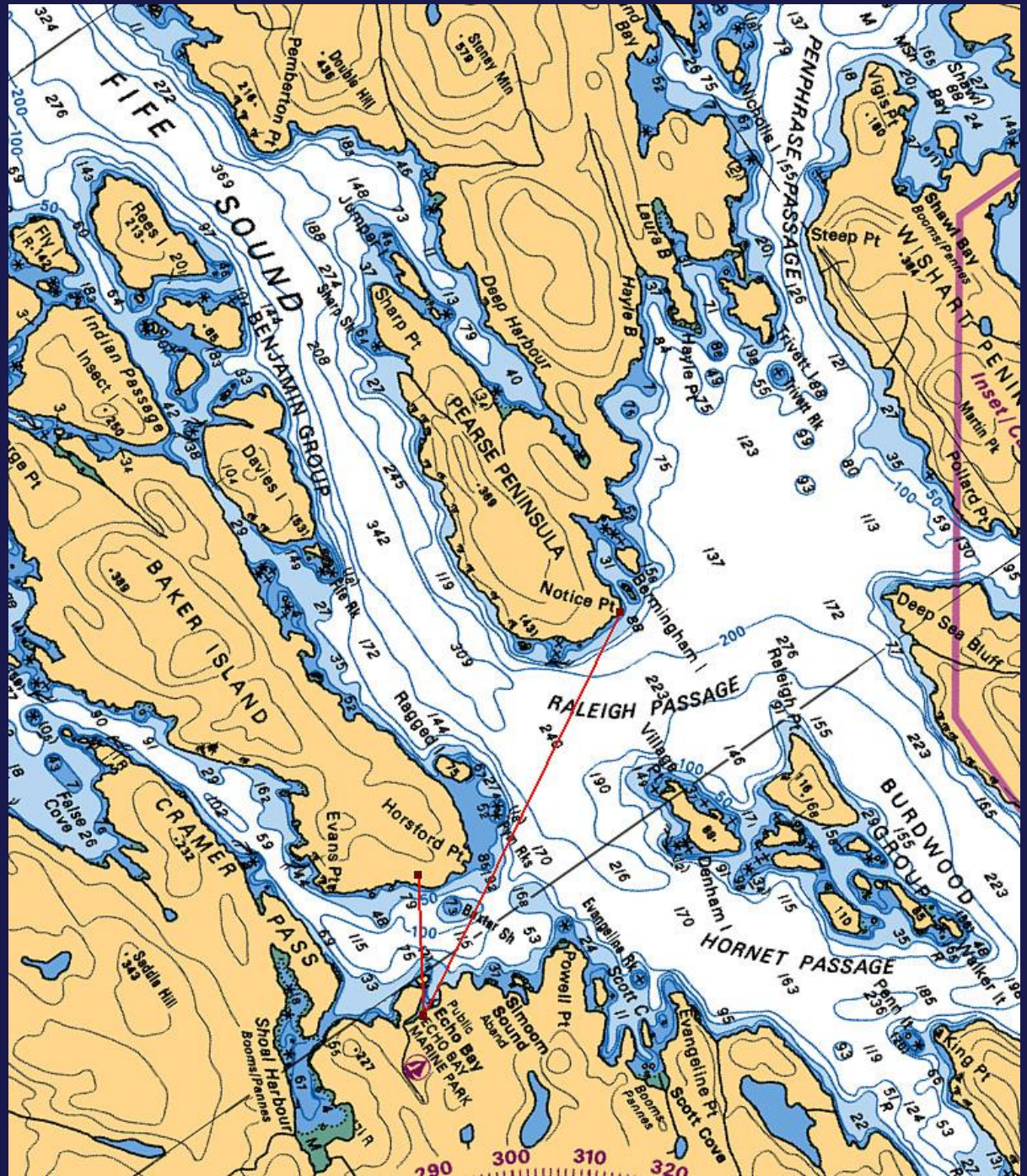
Photo copyright "Cruising Guides" by Peter Vassilopoulos. Used with permission.

Pierre's at Echo Bay



Photo copyright "Cruising Guides" by Peter Vassilopoulos. Used with permission.

Pierre's at Echo Bay



Pierre's at Echo Bay

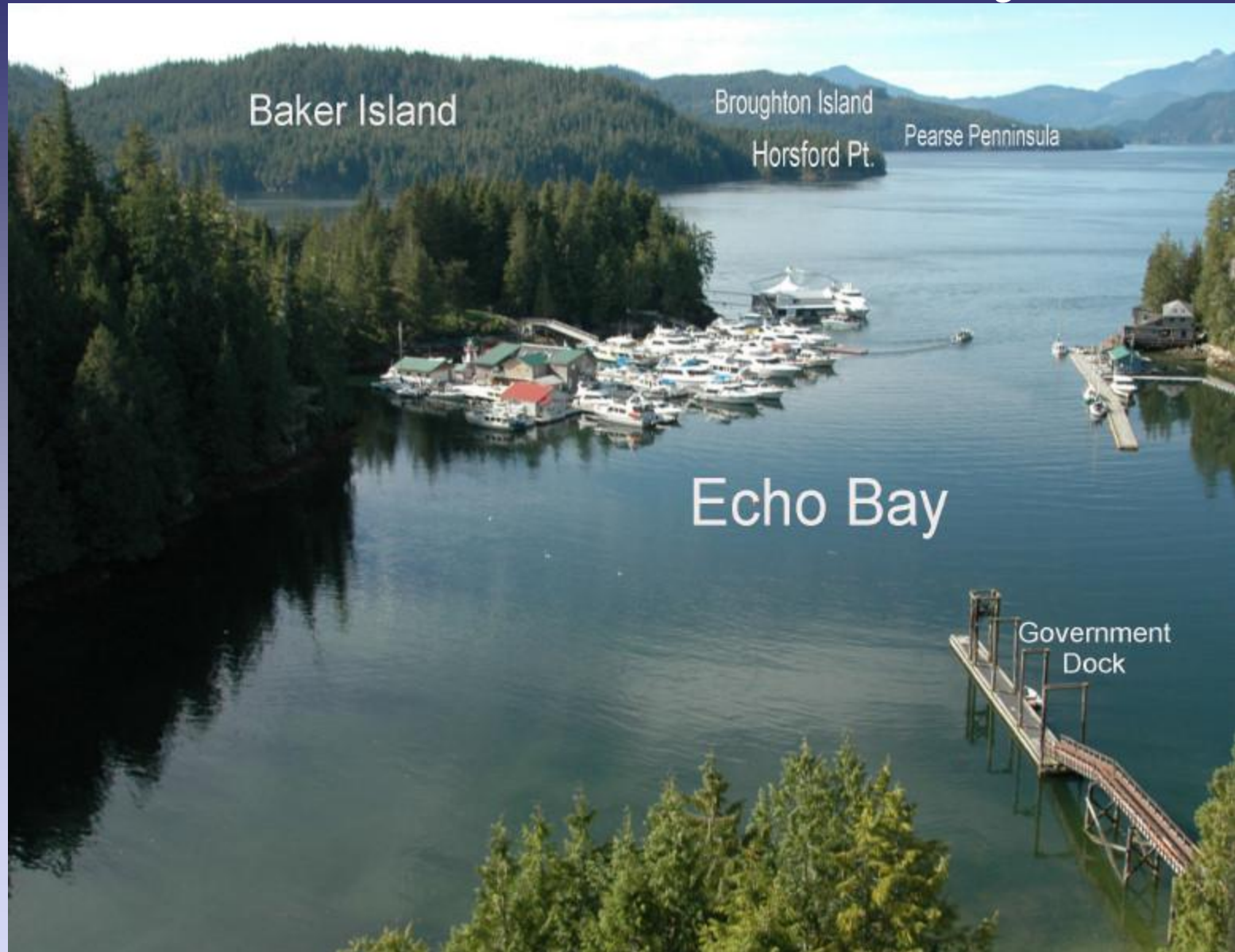


Photo copyright "Cruising Guides" by Peter Vassilopoulos. Used with permission.

Pierre's at Echo Bay



Photo copyright "Cruising Guides" by Peter Vassilopoulos. Used with permission.

Pierre's at Echo Bay



Pierre's at Echo Bay

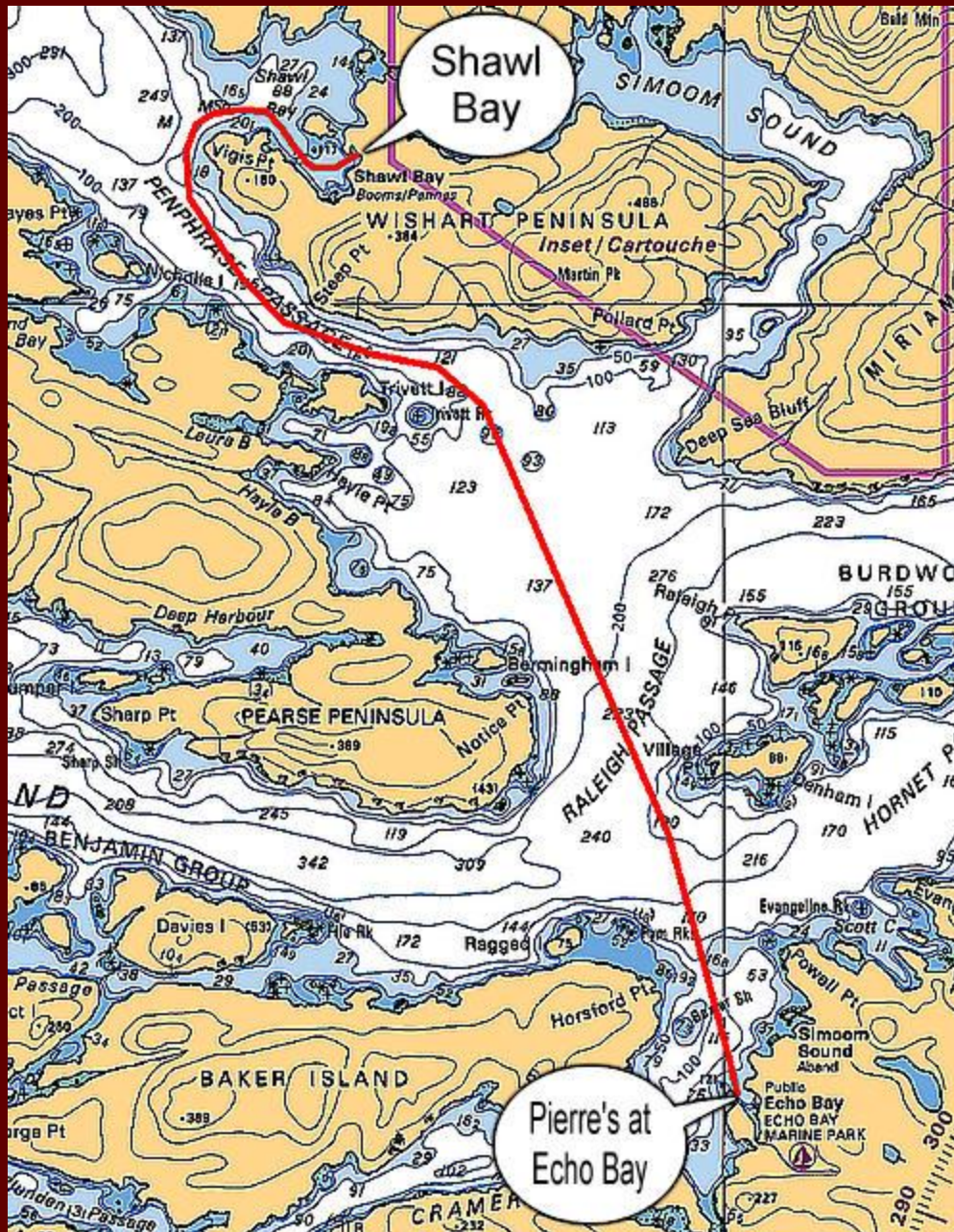


- Kenmore Air Arriving in Echo Bay



- Floating Home in Echo Bay





Pierre's at Echo Bay to Shawl Bay

- 8.5 nm
- 1 hour 13 min.
@ 7.0 knots
- CHS Chart 3515

- Floating Homes in Shawl Bay



- Approaching Shawl Bay Marina





- **Shawl Bay Marina** Water, part time power, cabins, internet.

- Laundry, Showers, and Washroom in Shawl Bay



- Welcome to Pet Friendly Shawl Bay Marina



- Canopy in Shawl Bay Marina





• Breakfast in Shawl Bay Marina

• Breakfast Under the Canopy

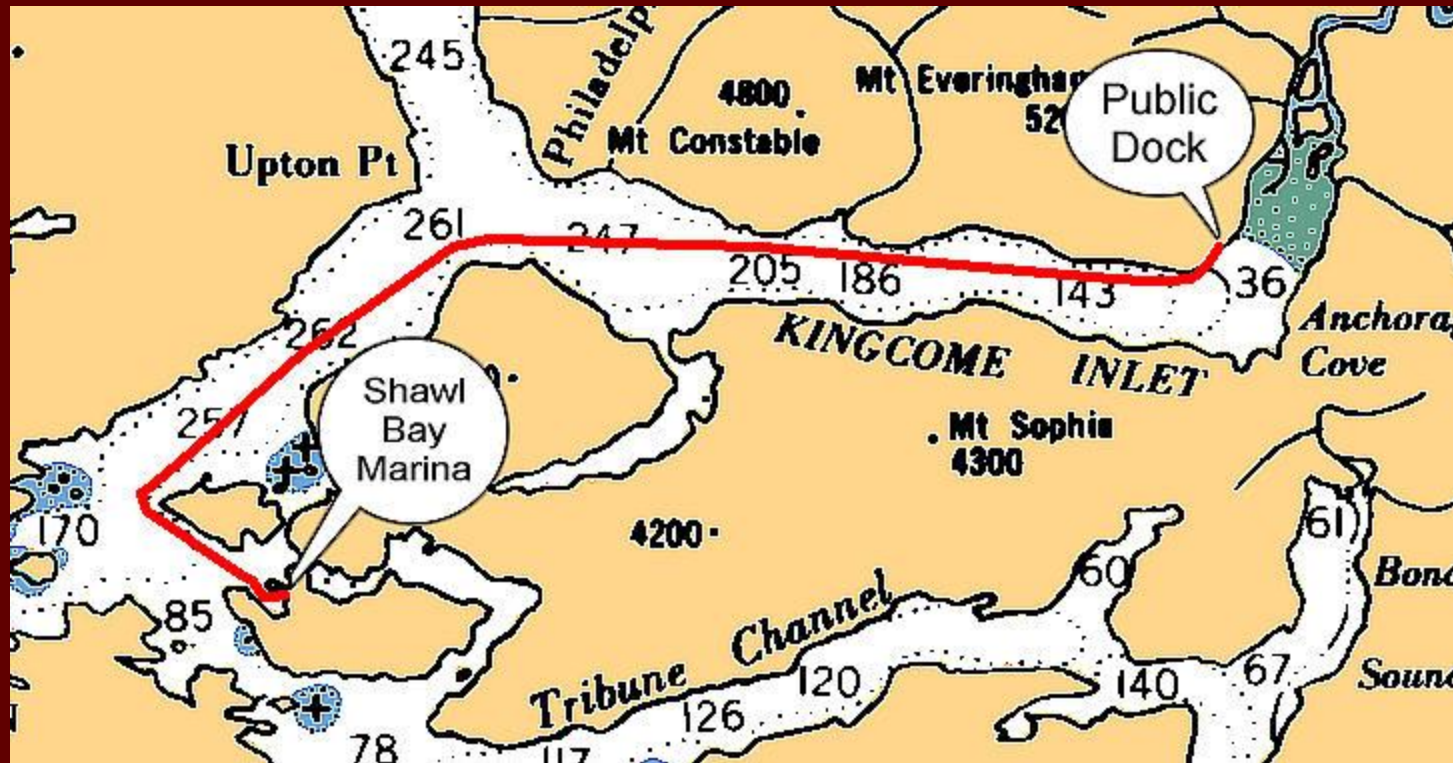


- Boat With Moustache in Shawl Bay



Shawl Bay to Kingcome Inlet

- 38.0 nm round trip
- 5 hours 26 min. @ 7.0 knots



- CHS Chart 3515

- Approaching Kingcome Inlet



- Looking Into Kingcome Inlet



- Waterfall in Kingcome Inlet

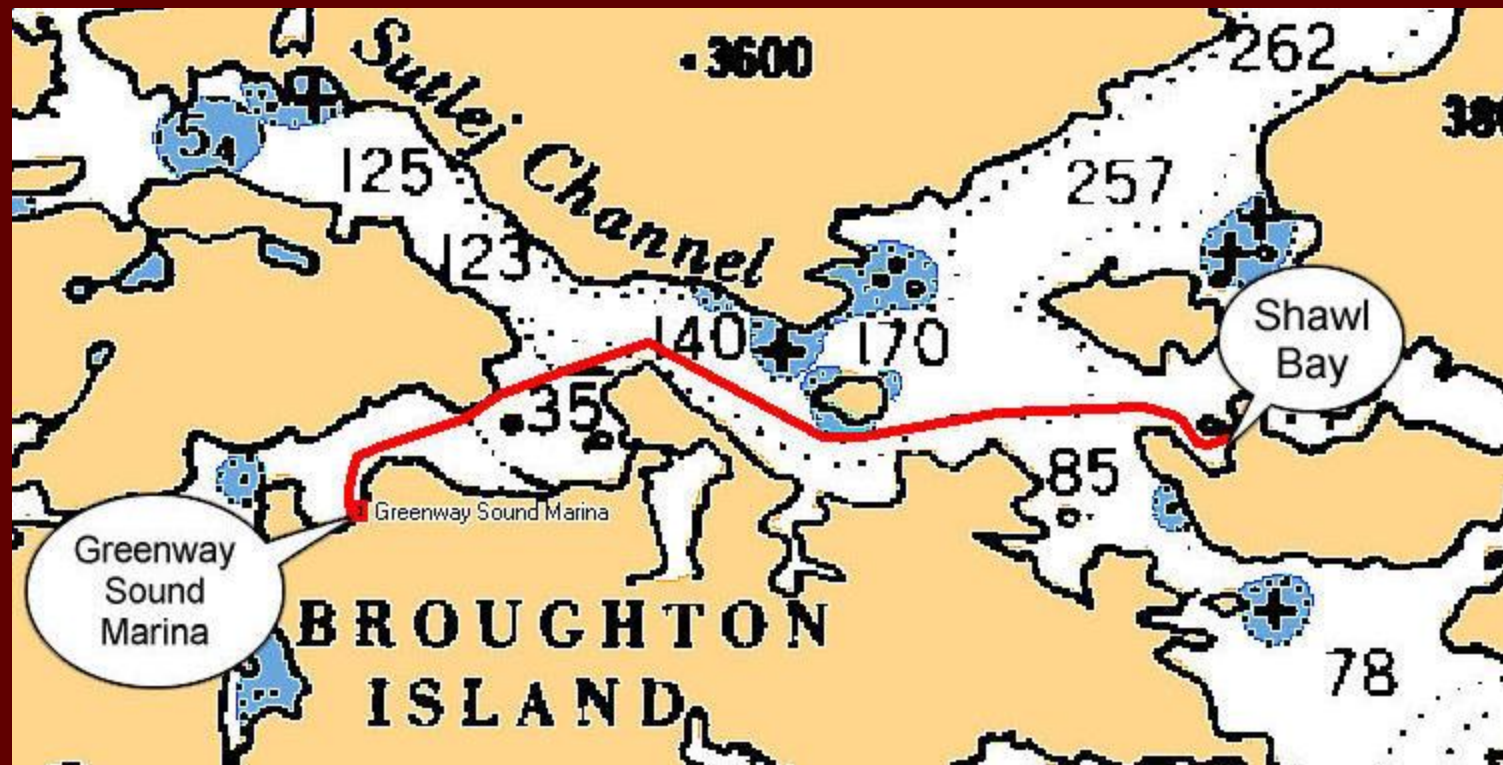


- On the Dock in Kingcome Inlet



Shawl Bay to Greenway Sound

- 9.1 nm
- One hour 18 min. @ 7.0 knots



- CHS Charts 3515 and 3547

• Greenway Sound Marina

Filtered water,
power,
garbage.



Hike to
Broughton
Lake

- Greenway Sound Marina

Laundry, showers



- Greenway Sound

Restaurant



- Pet Friendly Greenway Sound



- Greenway Sound Recreation Site



- Greenway Sound Recreation Site



- Greenway Sound



- Broughton Lake Recreation Site

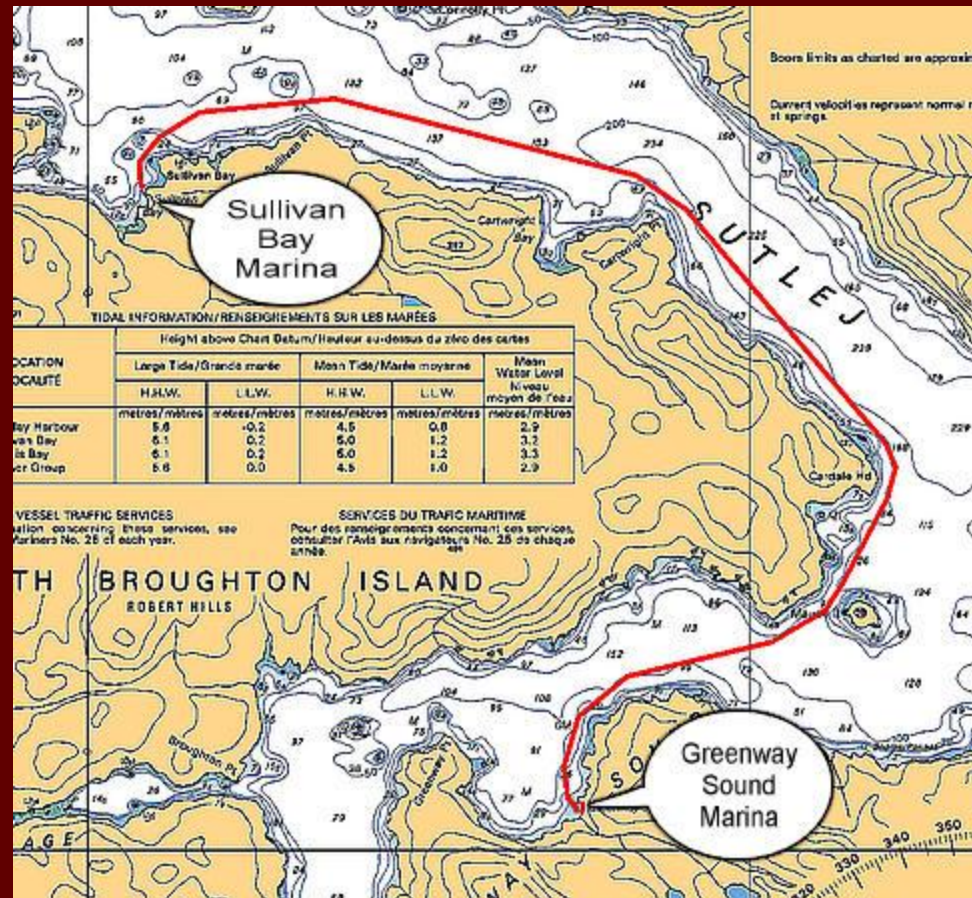


- Broughton Lake Recreation Site



Greenway Sound to Sullivan Bay

- 7.1 nm
- One hour
1 min.
@ 7.0 knots
- CHS Chart
3547





• Sullivan Bay

North
Broughton
Island

6.9 nm from
Greenway
Sound
59min @
7.0 knots

11.0 nm from
Shawl Bay
1hr 34min
@ 7.0 knots

Fuel,
water,
power,
groceries,
liquor,
ice, showers,
laundry,
and internet.

- Sullivan Bay Marina



- Sullivan Bay Marina



- Floating Homes in Sullivan Bay Marina



- In Sullivan Bay Marina



- Restaurant in Sullivan Bay Marina

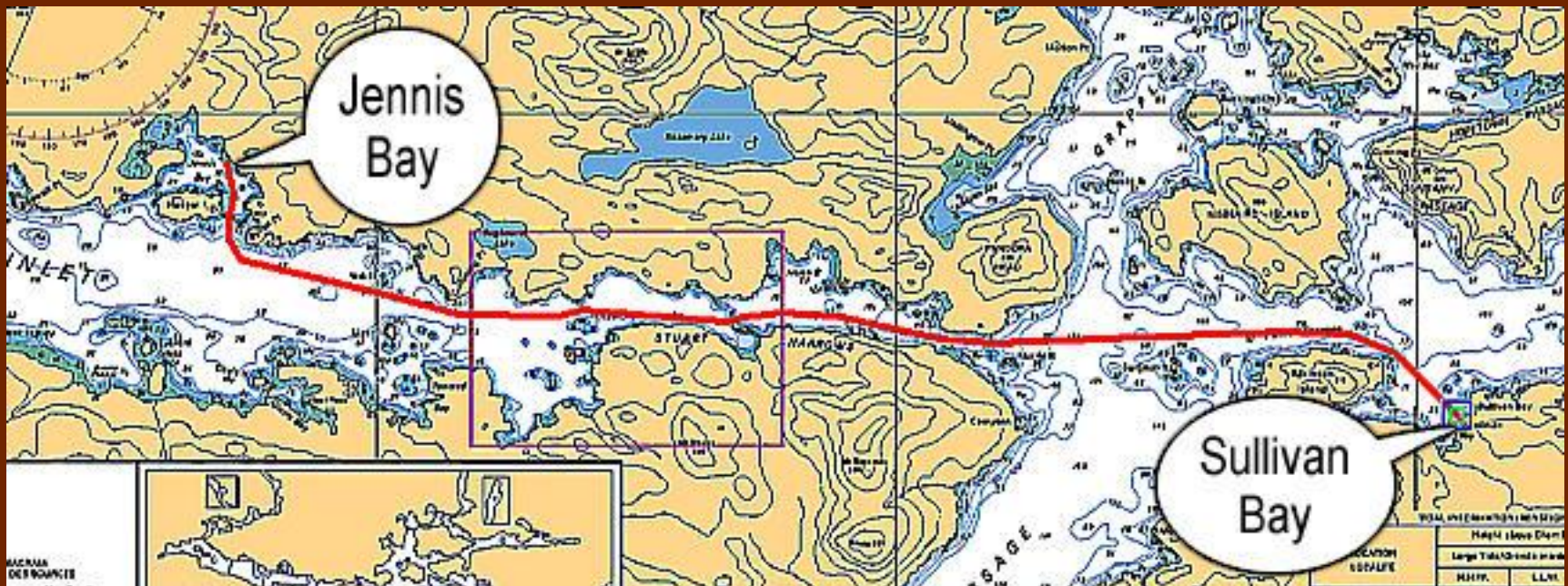


- Fuel Dock in Sullivan Bay Marina



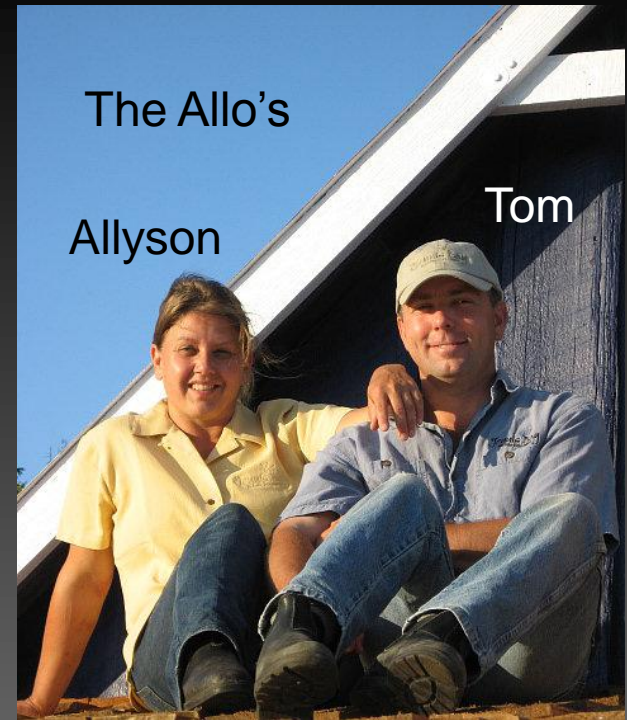
Sullivan Bay to Jennis bay

- 8.3 nm
- 1 hour 11 min.
@ 7.0 knots



- CHS Chart 3547

• Jennis Bay



The Allo's

Allyson

Tom



- Jenniss Bay Extreme Expeditions



- The Dock in Jenniss Bay



• Jennis Bay Happy Hour



- Jenniss Bay Pot Luck

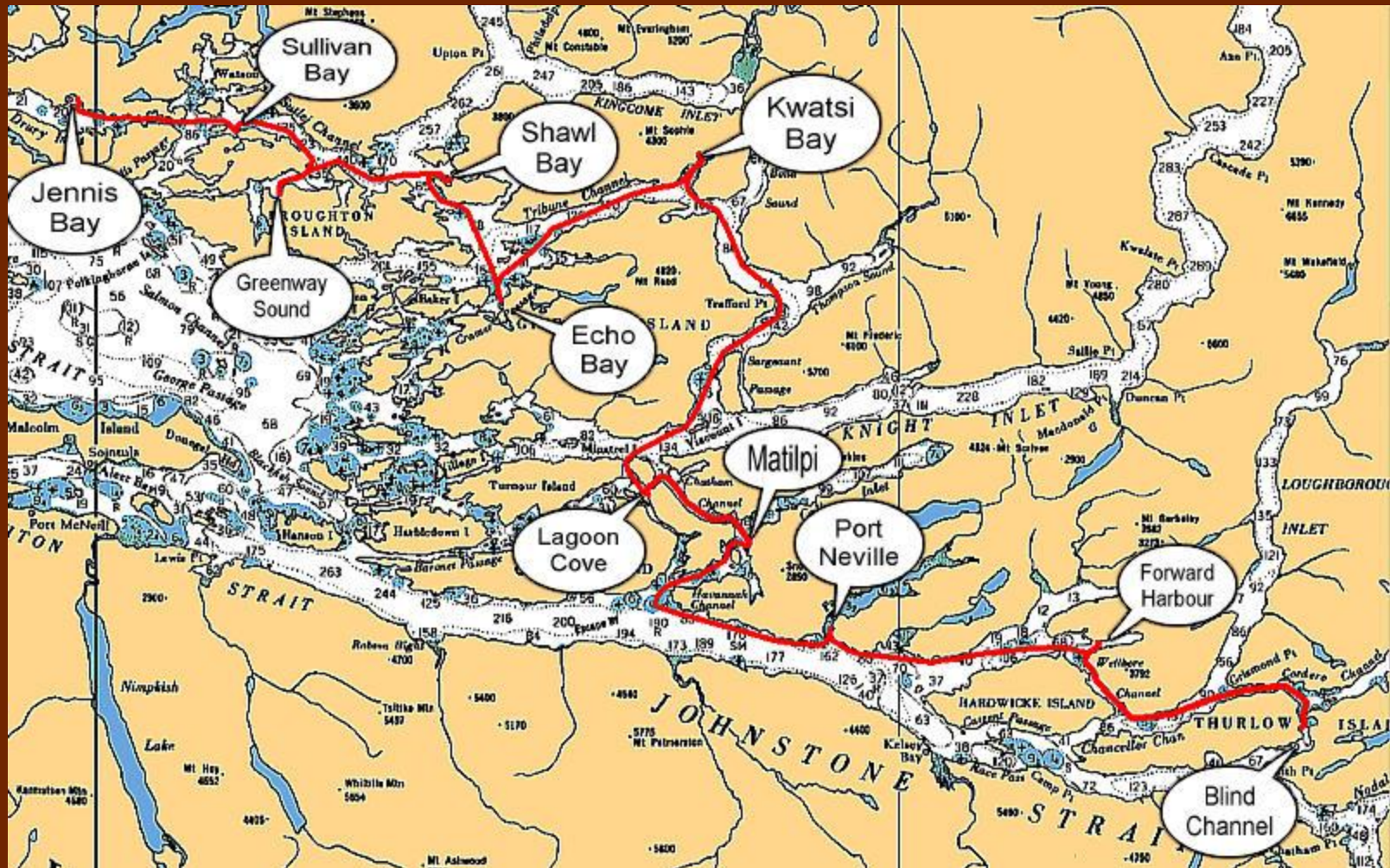


- Jennis Bay Sing Along



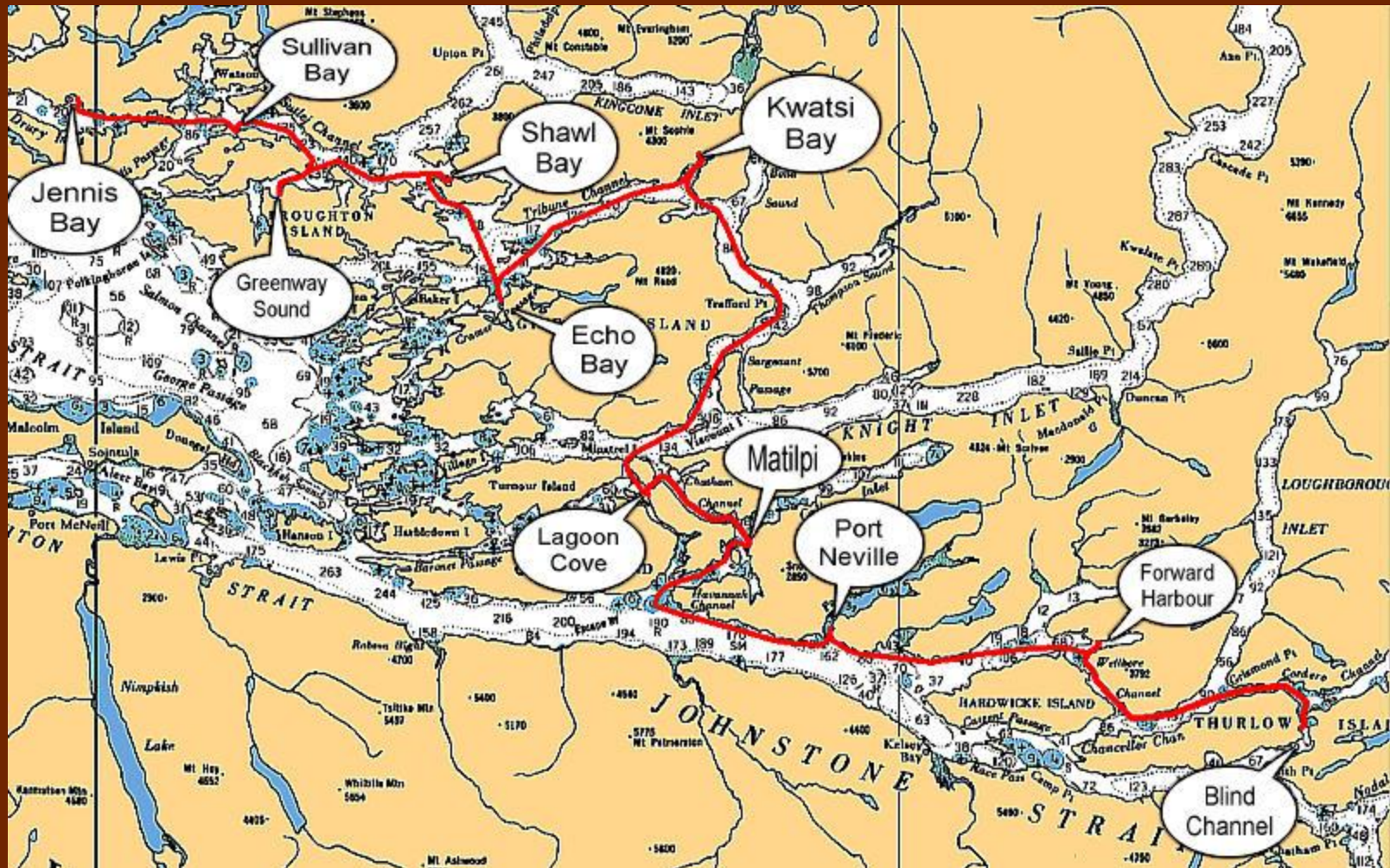
Total Cruising Distance We've Shown

- 118.9 nm
- 16 hours 59 min.
@ 7.0 knots



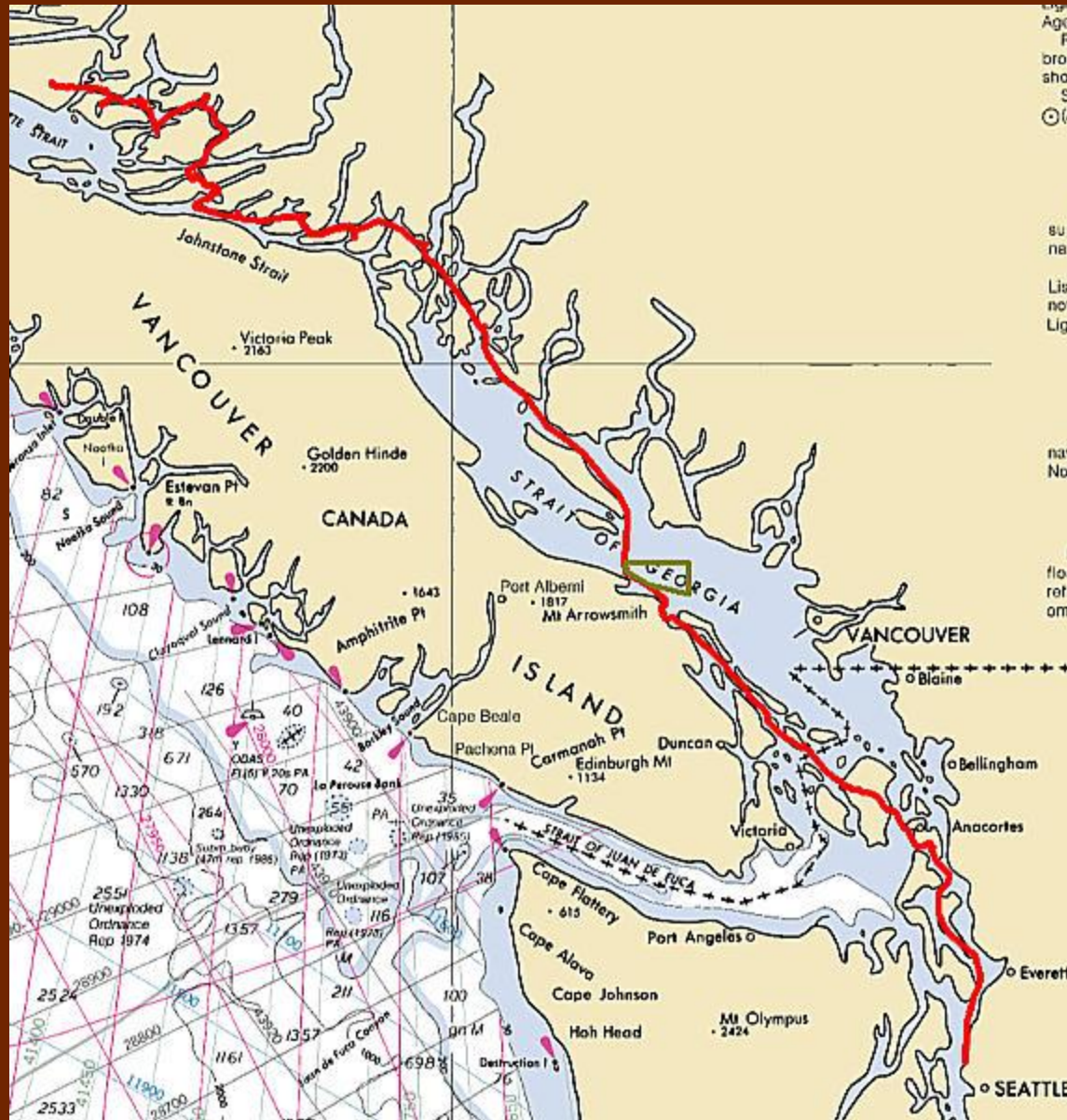
Total Cruising Distance With Return to Blind Channel

- 237.8 nm
- 33 hours 58 minutes
@ 7.0 knots



Total Cruising Distance Round Trip From Shilshole Bay, Seattle

- 703.4 nm
- 100 hours
29 minutes
@ 7.0 knots



- Thanks for the memories,

Carl Tenning



QE  *Too*

http://carlten.tripod.com/q_e_too/

