

Cruising The Salish Sea

by Carl Tenning



<http://carlten.tripod.com>

On May 15, 2009, the Washington State Board of Geographic Names, took up the proposal to designate the inland waters of Puget Sound extending to Desolation Sound in British Columbia, as “The Salish Sea”.



- It would give acknowledgment to a single ecosystem that crosses national, state and provincial boundaries. Many scientists, environmentalists and Indian tribes have already adopted the term, though it's not official in the U.S. or Canada.

Cruising The Salish Sea

- 31 Day Cruise
Olympia
through
Desolation
Sound

The Salish Sea Map by Stefan
Freelan, WWU, 2009



Highlights of The Salish Sea

- Olympia
- Jarrell Cove
- Longbranch
- Mayo Cove
- Gig Harbor
- Dockton
- Blake Island
- Kingston
- Langley
- Cornet Bay
- Blakely Island
- Prevost Harbor
- Bedwell Harbour
- Port Browning
- Otter Bay
- Cowichan Bay
- Maple Bay
- Chemainus
- Telegraph Harbour
- Conover Cove
- Nanaimo
- Pender Harbour
- Princess Louisa Inlet
- Westview
- Prideaux Haven
- Toba Inlet
- *Octopus Islands
- *Blind Channel
- *Big Bay
- Refuge Cove

Percival Landing



Percival Landing Public Docks

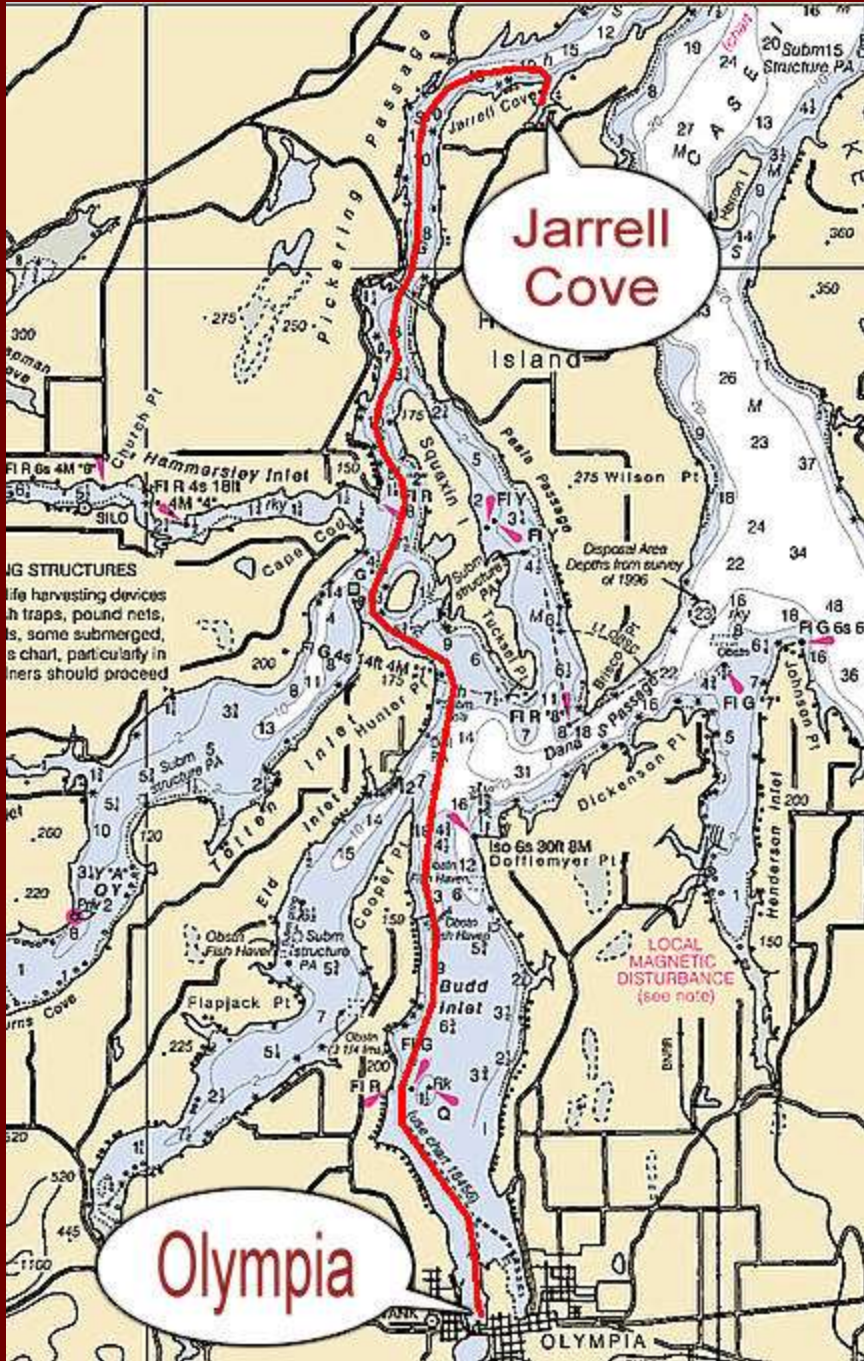


Percival Landing Public Docks



Percival Landing Public Docks





- Percival Landing, Olympia to Jarrell Cove
- 16.9 nm
2 Hours
25 Min.
@ 7 knots

Jarrell Cove Outer Dock



Pump-out in Jarrell Cove State Park



Jarrell Cove Campground



Jarrell Cove State Park Inner Dock

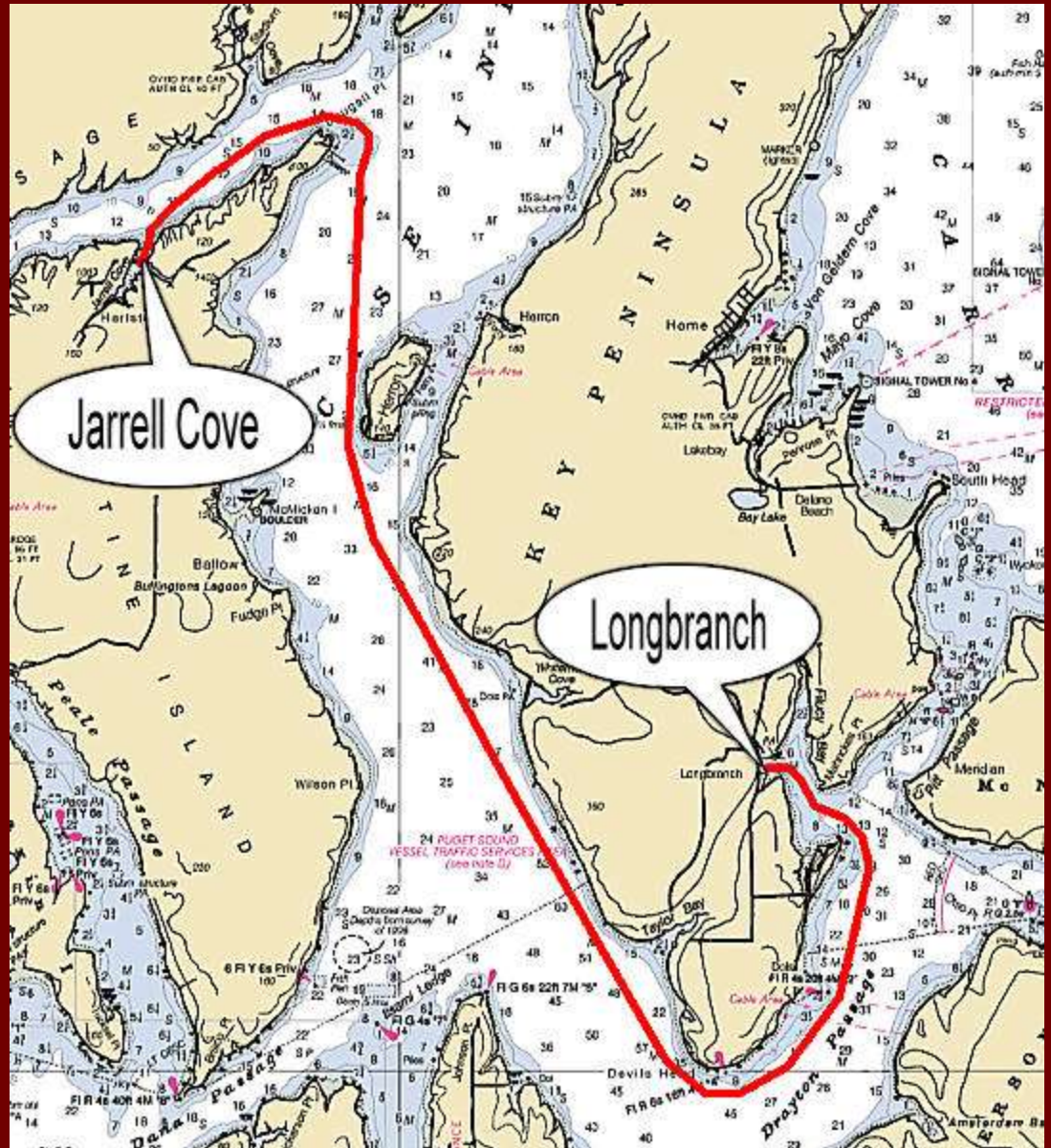


Jarrell Cove Marina



- Jarrell Cove
Marine
State Park
to
Longbranch

- 15.9 nm
Two Hours
16 Minutes @
7 knots



Dock at Joemma State Park



Sign-in at Longbranch Marina



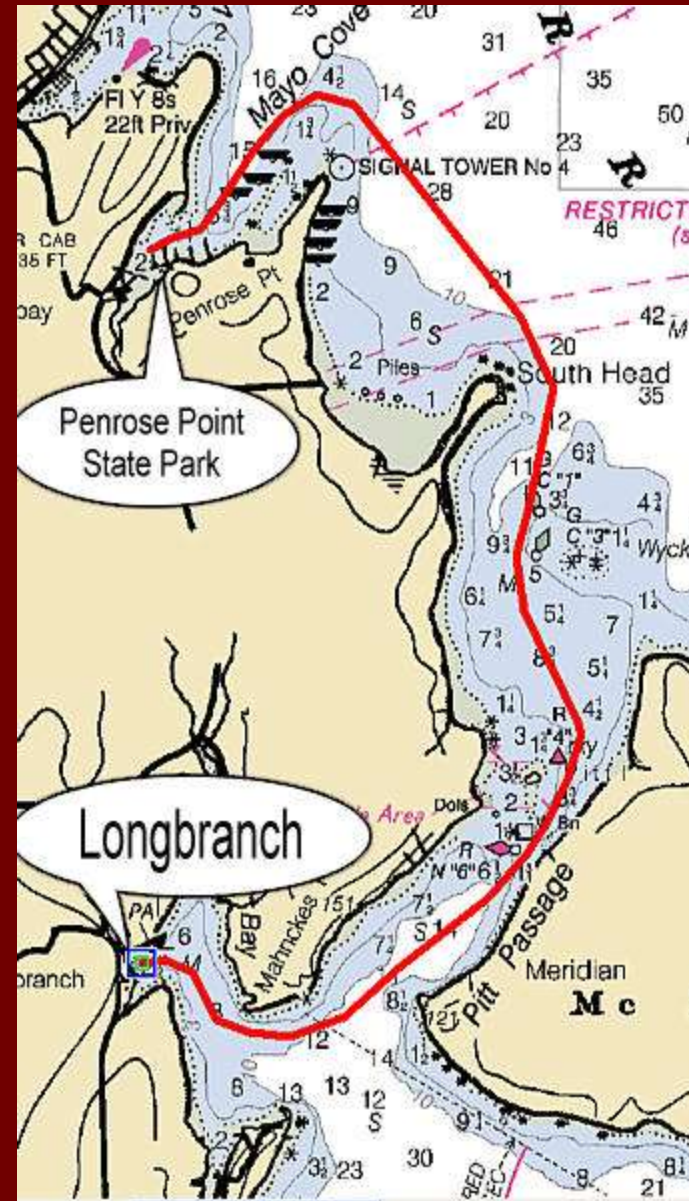
Anchorage in Fil Lucy Bay



MAR 23 2002

- Longbranch to Penrose Point State Park in Mayo Cove,

- 6.9 nm 59 Minutes @ 7 knots



Penrose Point State Park Dock



On the Dock



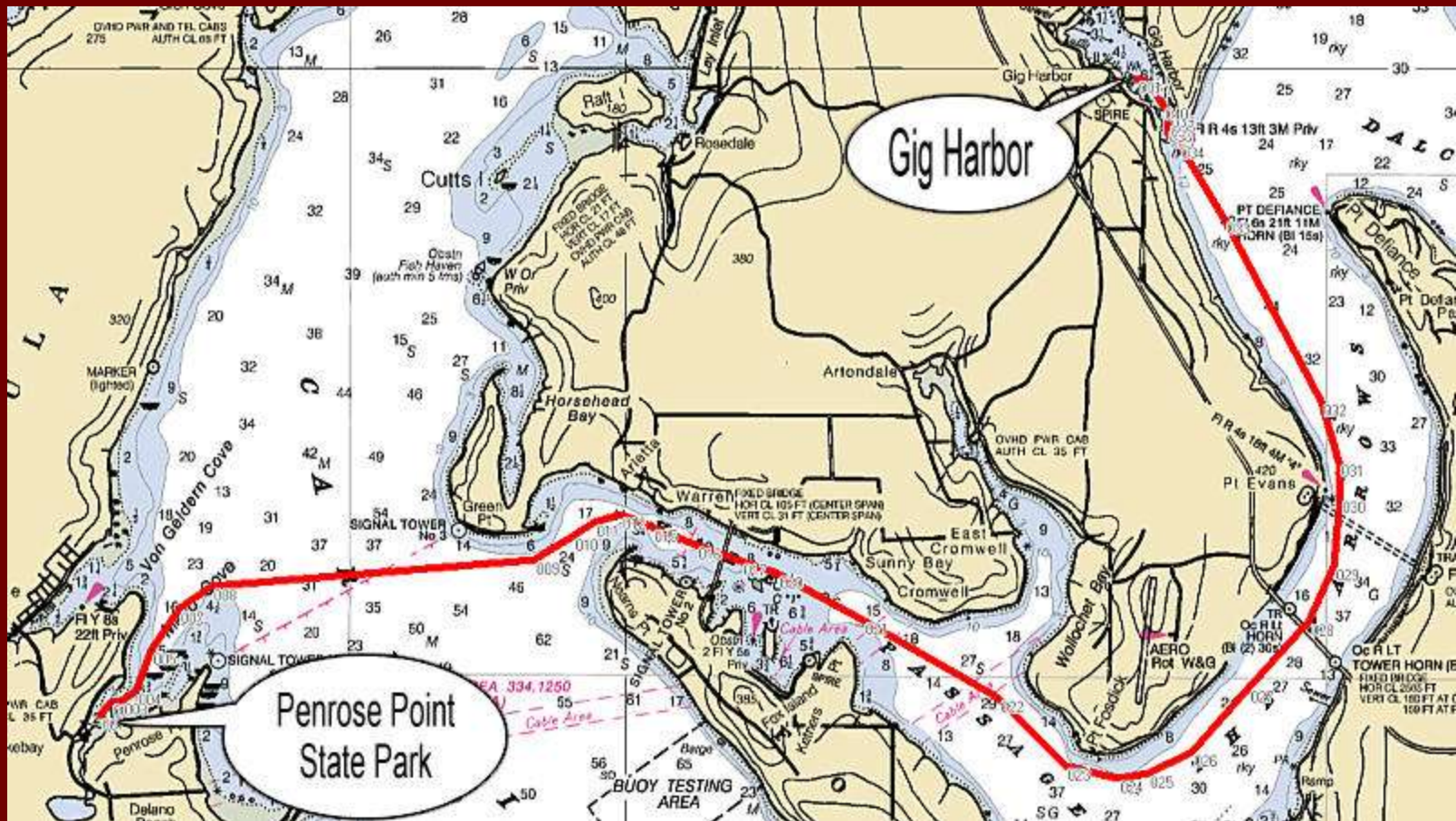
Picnic Area by the Dock



Penrose Point State Park



- Penrose Point State Park to Gig Harbor



- 13.8 nm One Hour 58 Minutes @ 7 knots

Ye Olde Glen Cove Hotel



YMCA Camp Seymour in Glen Cove



Fox Island Bridge in Hale Passage



Tanglewood Island Pavilion



Mount Rainier From Hale Passage



JUN 16 2004

Fox Island Yacht Club in Cedrona Cove



Narrows Marina Fuel Dock



Titlow Beach



Canoe in Tacoma Narrows



Second Tacoma Narrows Bridge Under Construction



Second Tacoma Narrows Bridge Under Construction



Approaching Point Defiance



Entering Gig Harbor



Gig Harbor City Dock



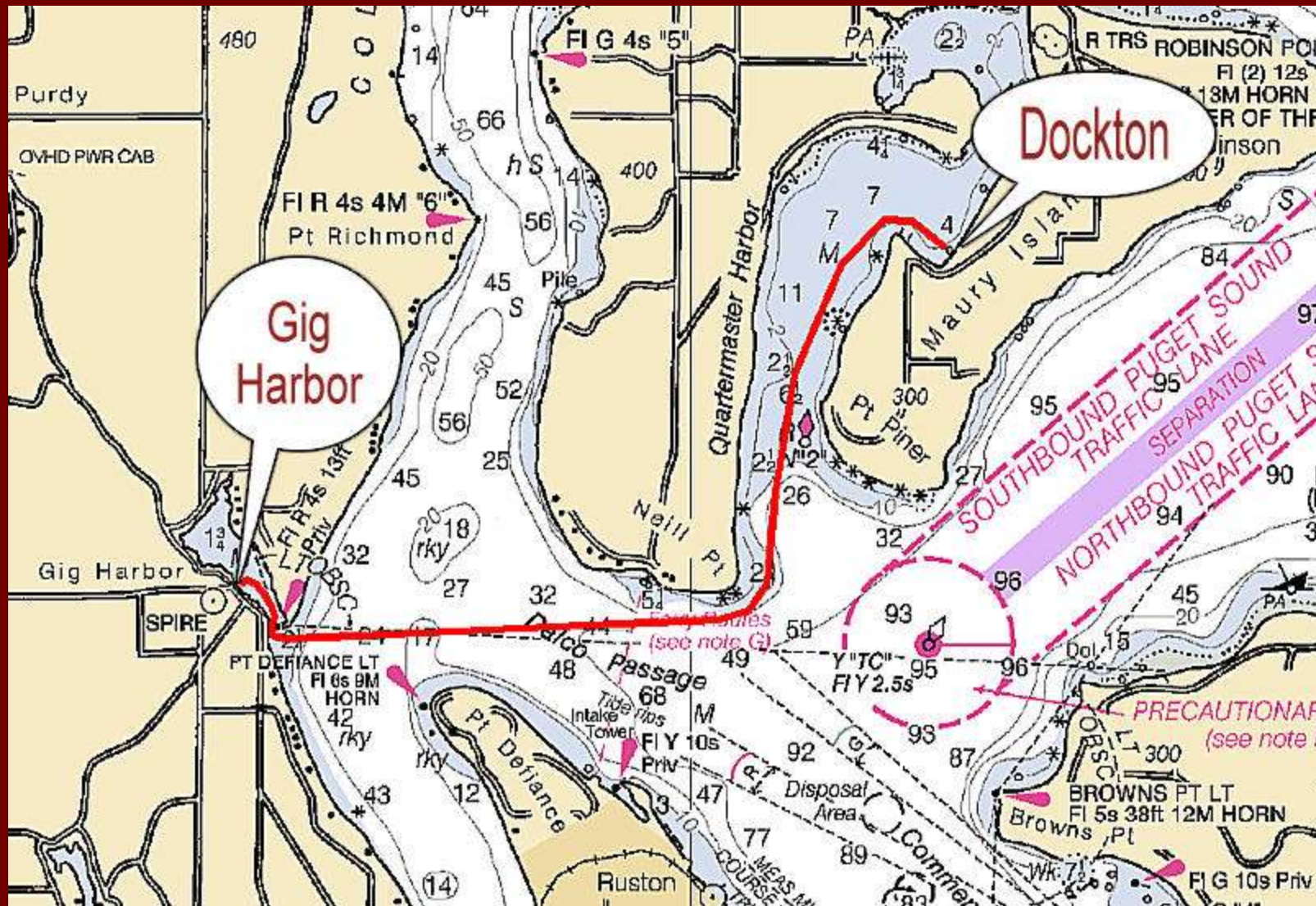
Fishermans Memorial



Tides Tavern



- Gig Harbor to Dockton
- 7.7 nm One Hour 6 Minutes @ 7 knots



Tacoma Fireboat and Coast Guard Patrol at Point Defiance



Point Defiance Park

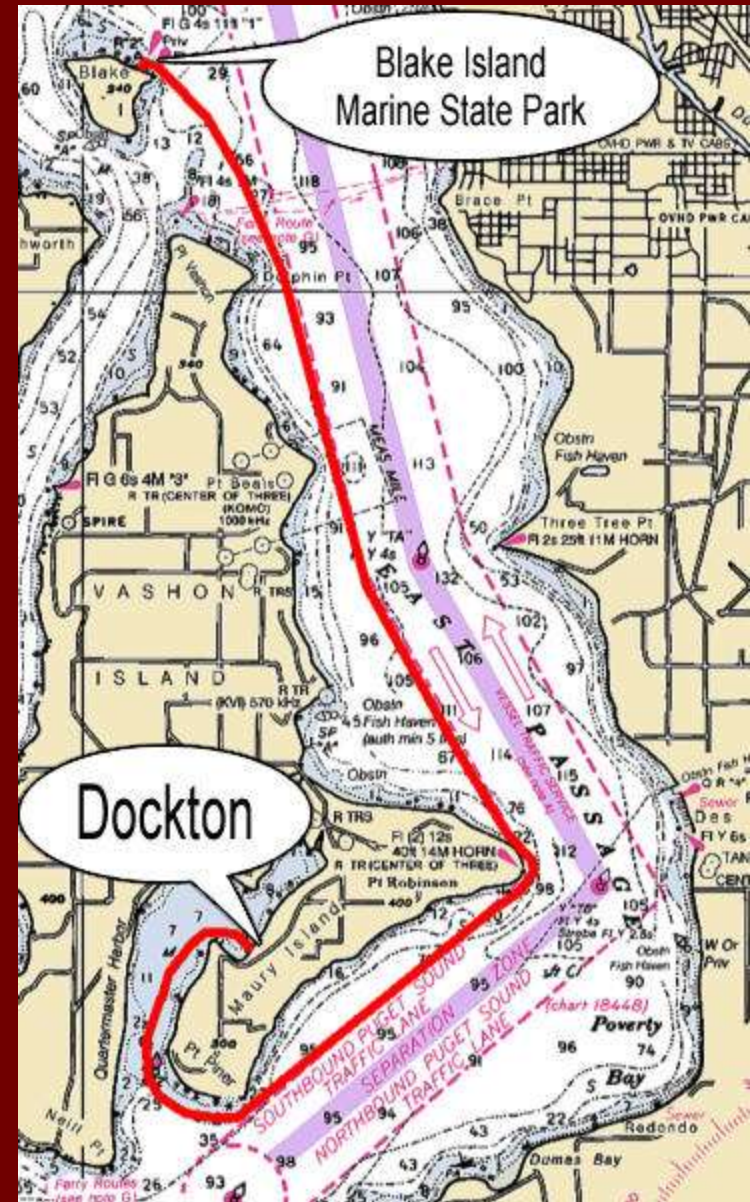


Dockton Moorage



- Dockton to Blake Island Marine State Park

- 18.9 nm
- Two Hours
- 42 Minutes
- @ 7 knots



Mount Rainier Over Poverty Bay



Entering Des Moines Marina



Des Moines Marina Fuel Dock



Leaving Des Moines Marina



- Entrance to Blake Island Inner Harbor



*Stay
between
the markers.*

- Blake Island State Park

Water and
camping on shore.



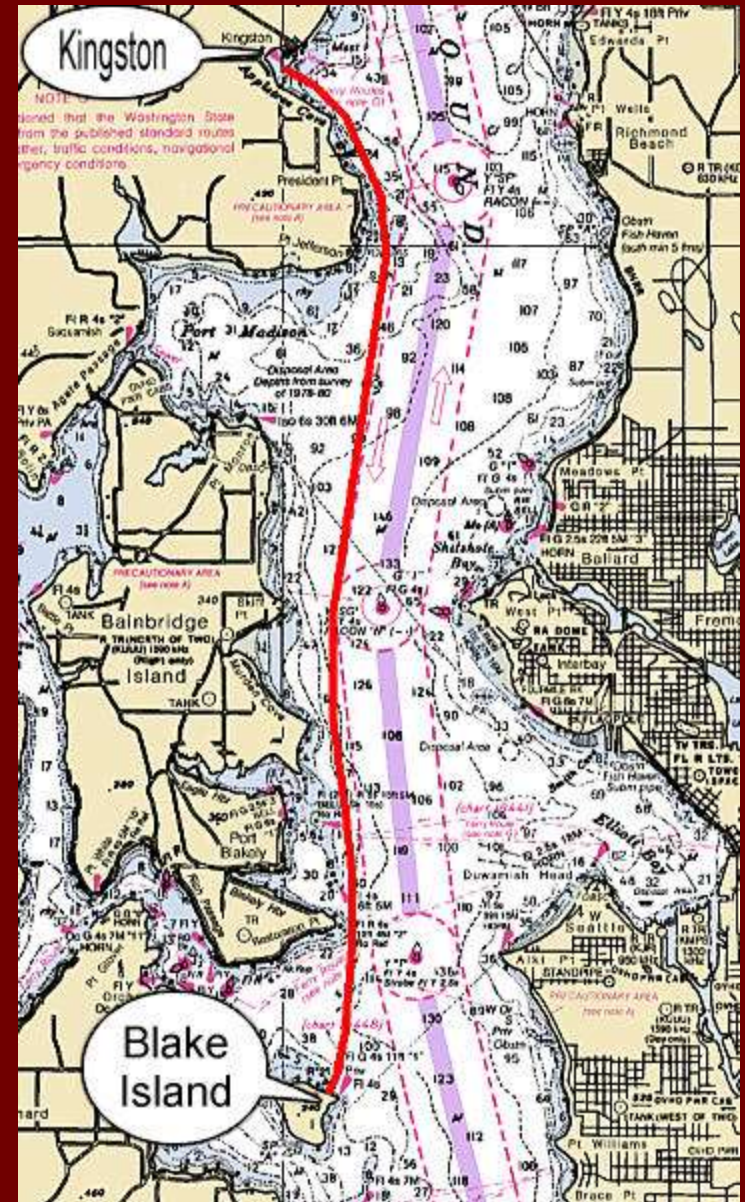
Popular, but not
always full. This
photo was mid-
week, late June.

10.7 nm from
Des Moines
Marina –
1hr 31min
@ 7.0 knots

- Blake Island Trails



- Blake Island Marine State Park to Kingston
- 15.6 nm Two Hours 14 Minutes @ 7 knots



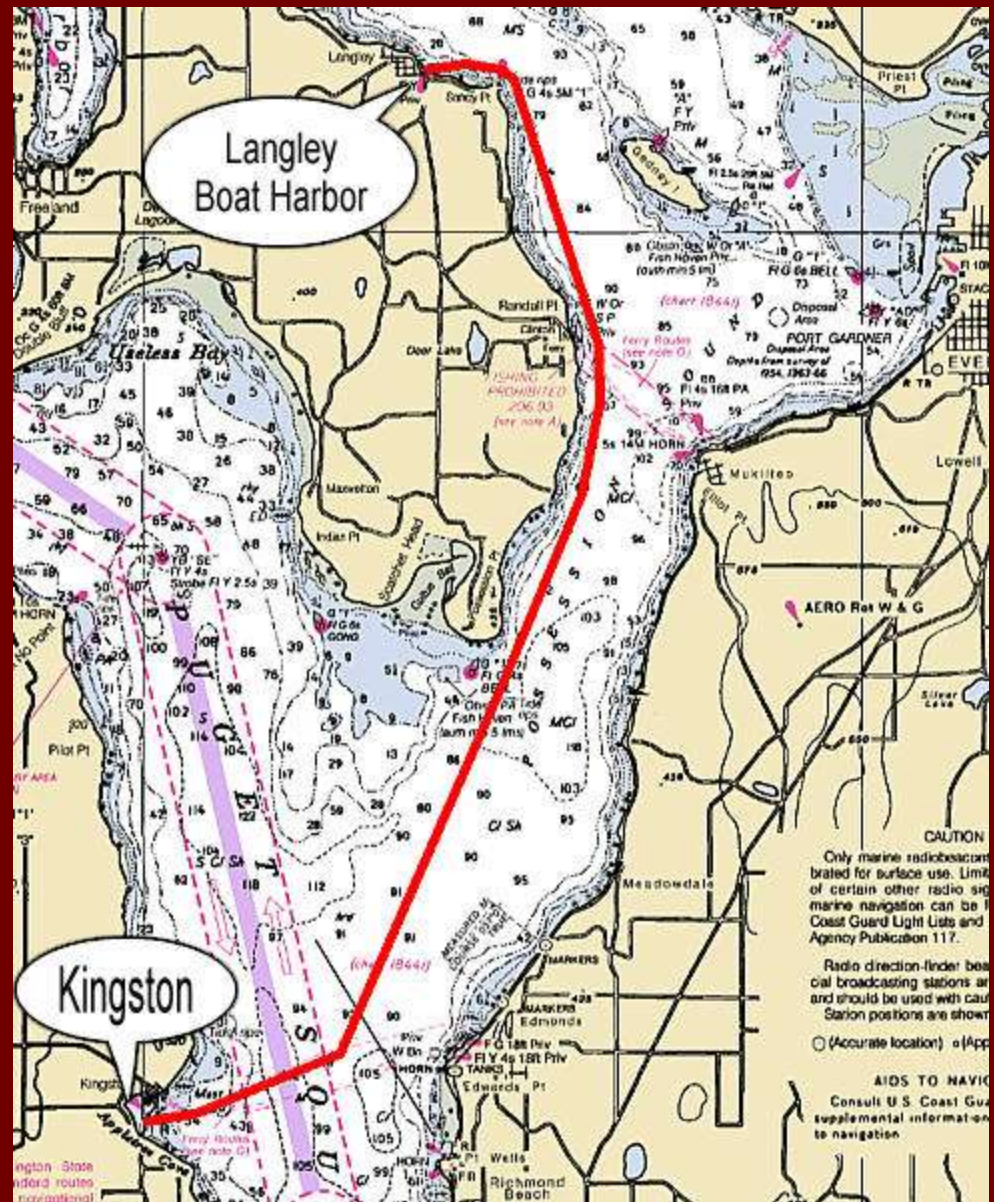
- Kingston Marina



- Downtown Kingston



- Kingston to Langley Boat Harbor
- 18.0 nm Two Hours 34 Minutes @ 7 knots



- Langley Boat Harbor

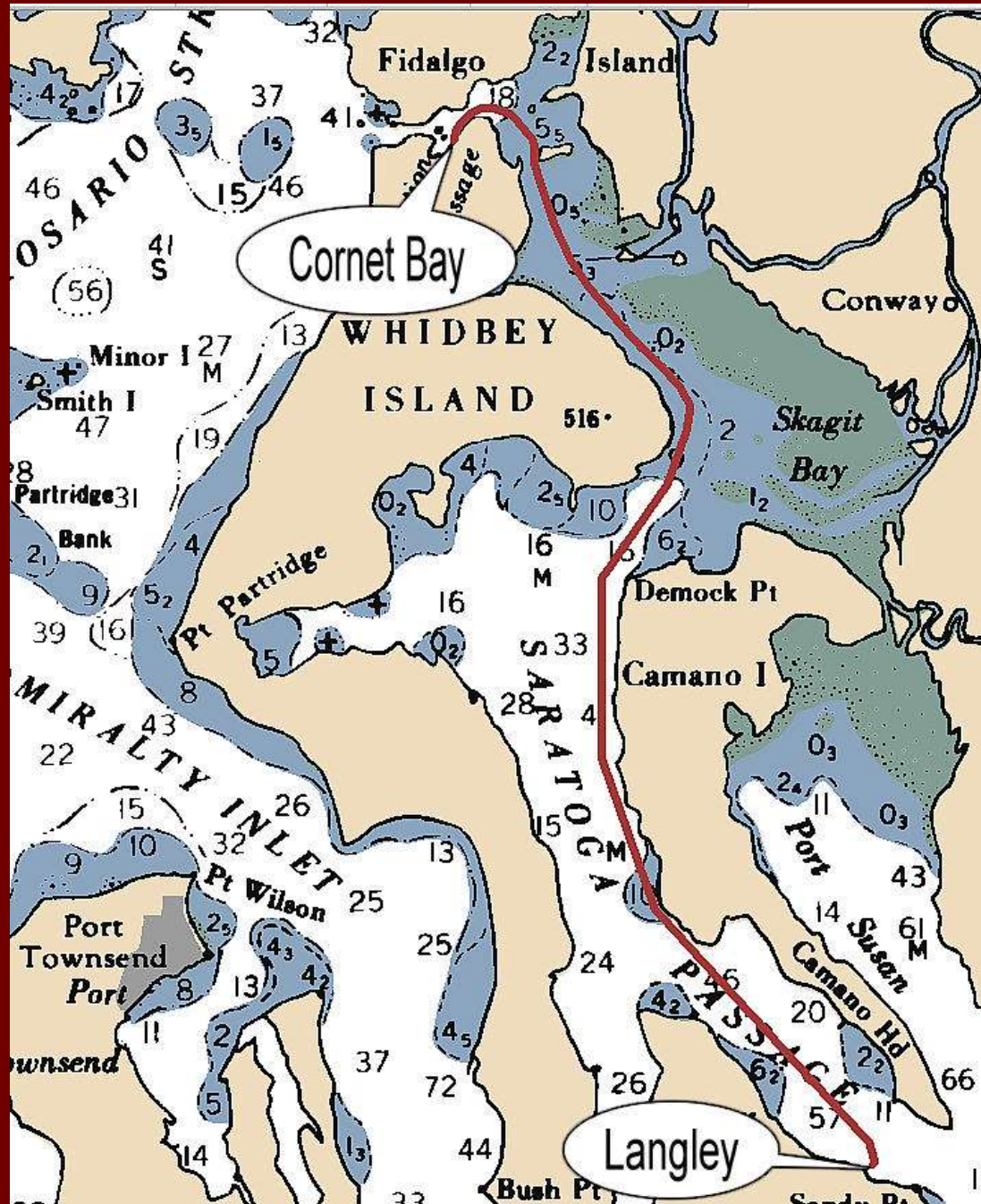
On Saratoga Passage,
Whidbey Island

32.7 nm from
Blake Is. –
4h 40min
@ 7.0 knots



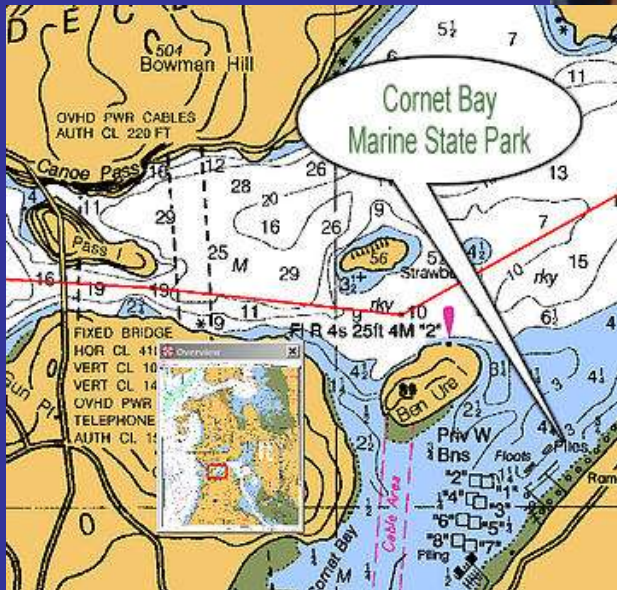
- Langley Boat Harbor to Cornet Bay

- 27.4 nm
Three Hours
55 Minutes @
7 knots



- Cornet Bay, Deception Pass State Park

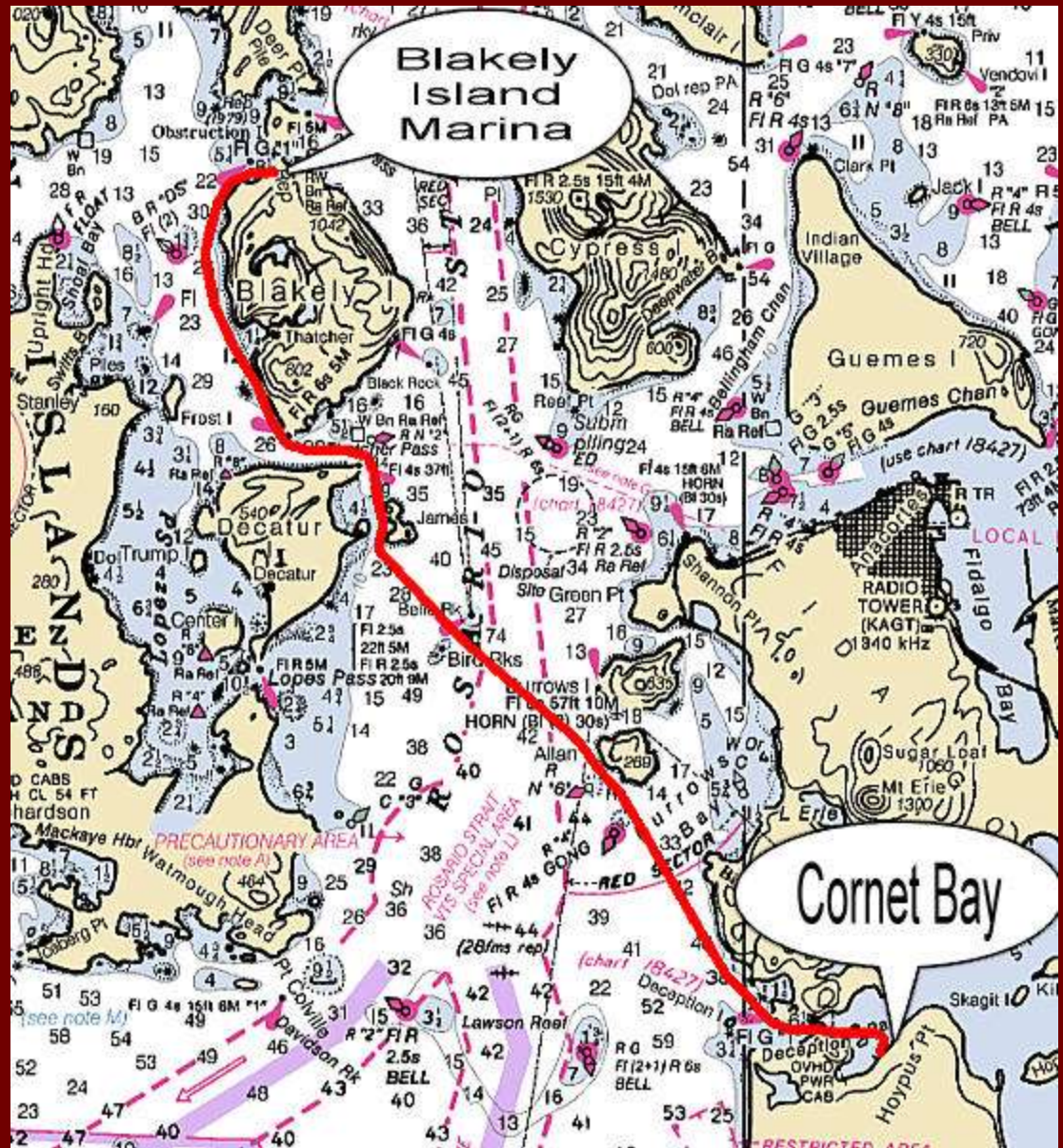
Water, garbage, and camping on shore.



27.4 nm from Langley Boat Harbor – 3hr 54min @ 7.0 knots

- Cornet Bay to Blakely Island

- 16.2 nm
- Three Hours
- 19 Minutes
- @ 7 knots



- James Island Marine State Park

Camping only,
no water.



Across Rosario
Strait from
Anacortes

9.7 nm from
Cornet Bay –
1hr 23min @
7.0 knots

Approaching Blakely Island Marina



Entry to Blakely Island Marina



Moorage in Blakely Island Marina

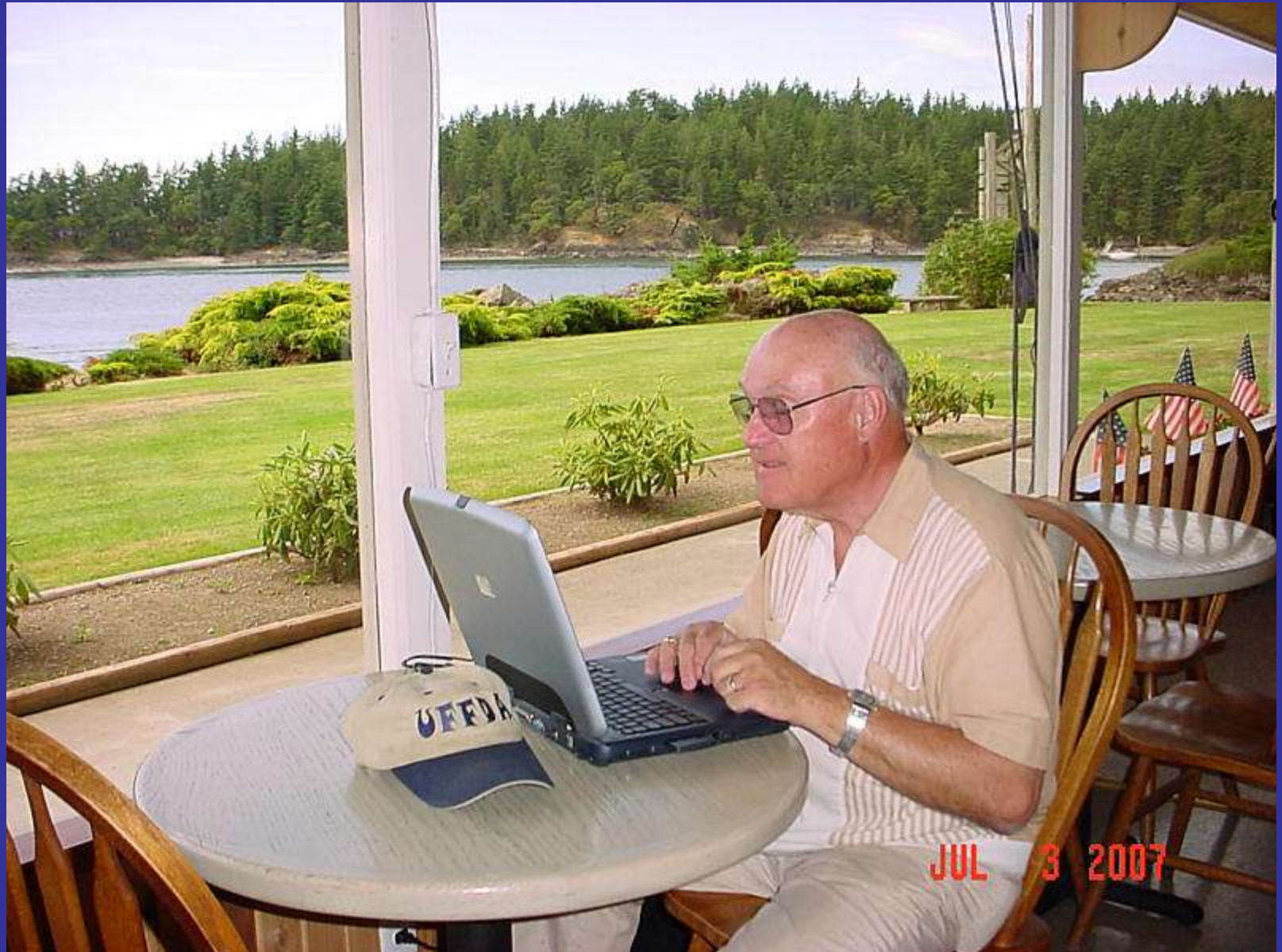


Blakely Island Marina

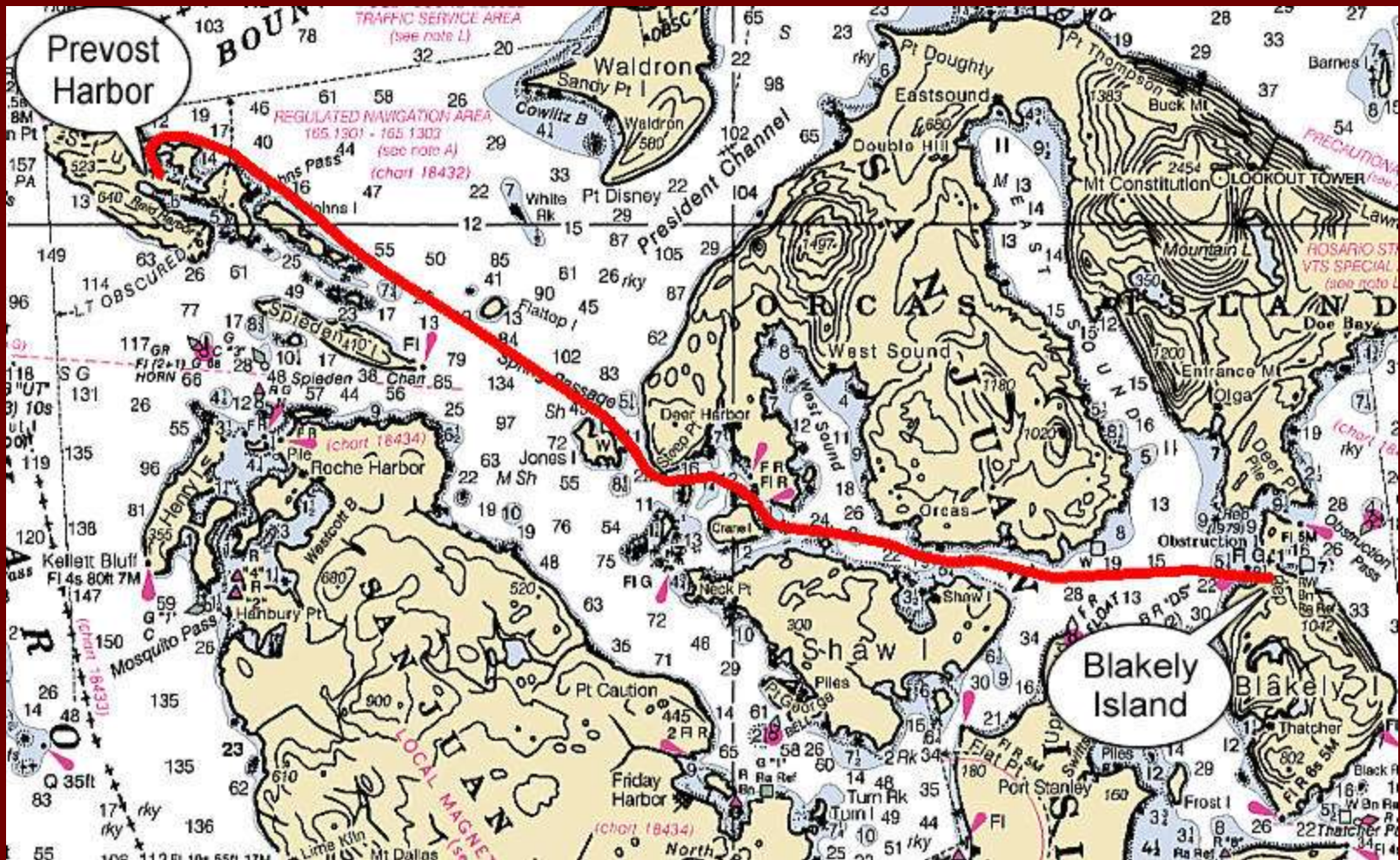


JUL 3 2007

Free Internet in Blakely Island Marina



• Blakely Island to Prevost Harbor



- 18.0 nm Two Hours 34 Minutes @ 7 knots

- Prevoost Harbor

15.4 nm from Matia Island –
2hr 12min @ 7.0 knots

Water,
camping,
trails



- Reid Harbor

12.2 nm from Friday Harbor
1hr 44min @ 7.0 knots



One minute
walk from
Prevost
Harbor

- Sucia Island
Marine State Park

15.7 nm from Friday Harbor –
2hr 14min @ 7.0 knots

Water and camping on shore.



Fossil
Bay

JUN 30 2005

- Sucia Island
Marine State Park

No garbage. Pack it in, pack it out.



Shallow
Bay

- Matia Island Marine Park

(also pronounced
“Mah-CIA”)

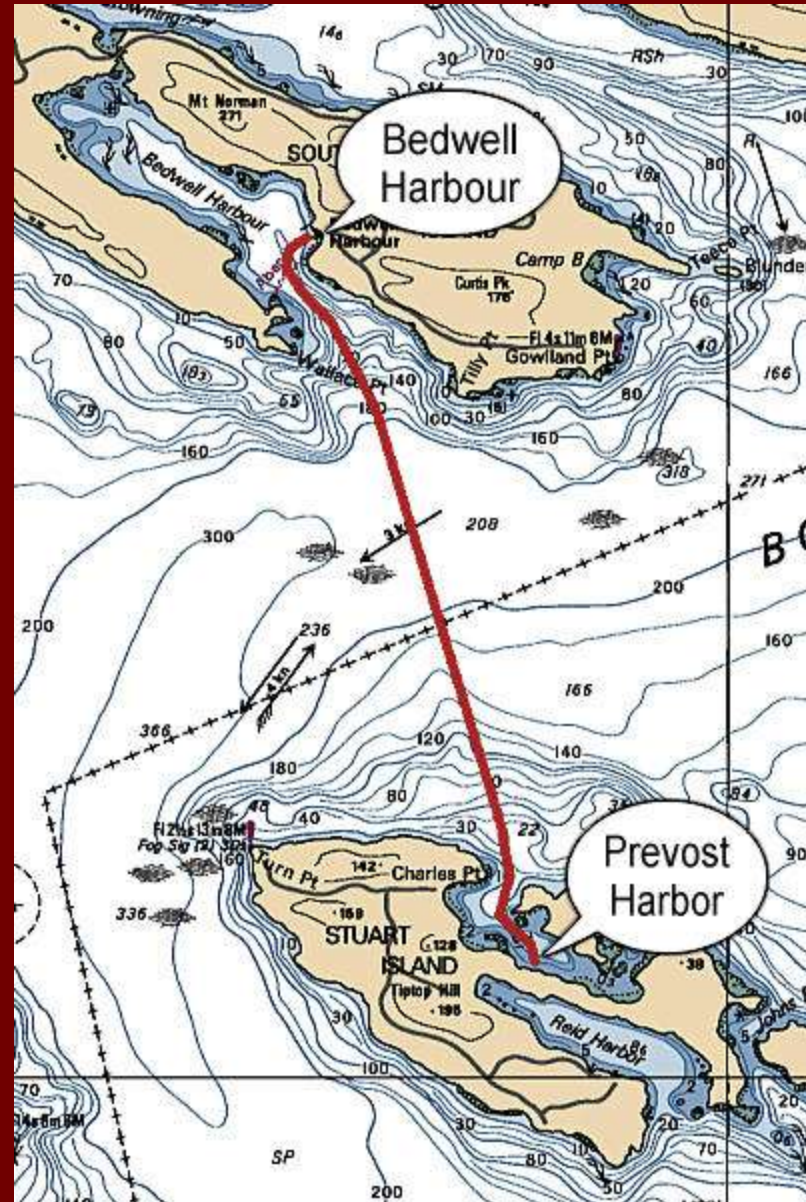
Wildlife Preserve
with 1 mile loop
trail.



Two
nautical
miles
east of
Sucia Is.

- Prevost Harbor to Bedwell Harbour

- 4.6 nm 39 Minutes @ 7 knots

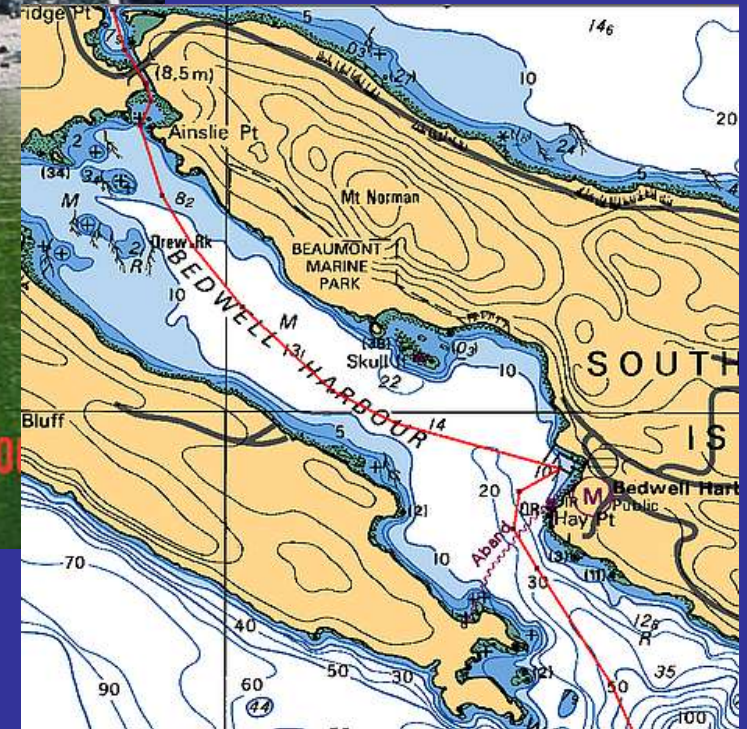


Entering Bedwell Harbour



- Bedwell Harbour Canada
Customs, South Pender Island

Captain brings
boat registration
and passenger ID.
Get clearance
number.



4.6 nm from Prevost Harbor
39min @ 7.0 knots

Poets Cove Marina

**South Pender Island, in
Bedwell Harbour**

Fuel, ice,
power,
water.
Restaurant
and
lodging
on shore.



Poets Cove Hotel and Restaurant

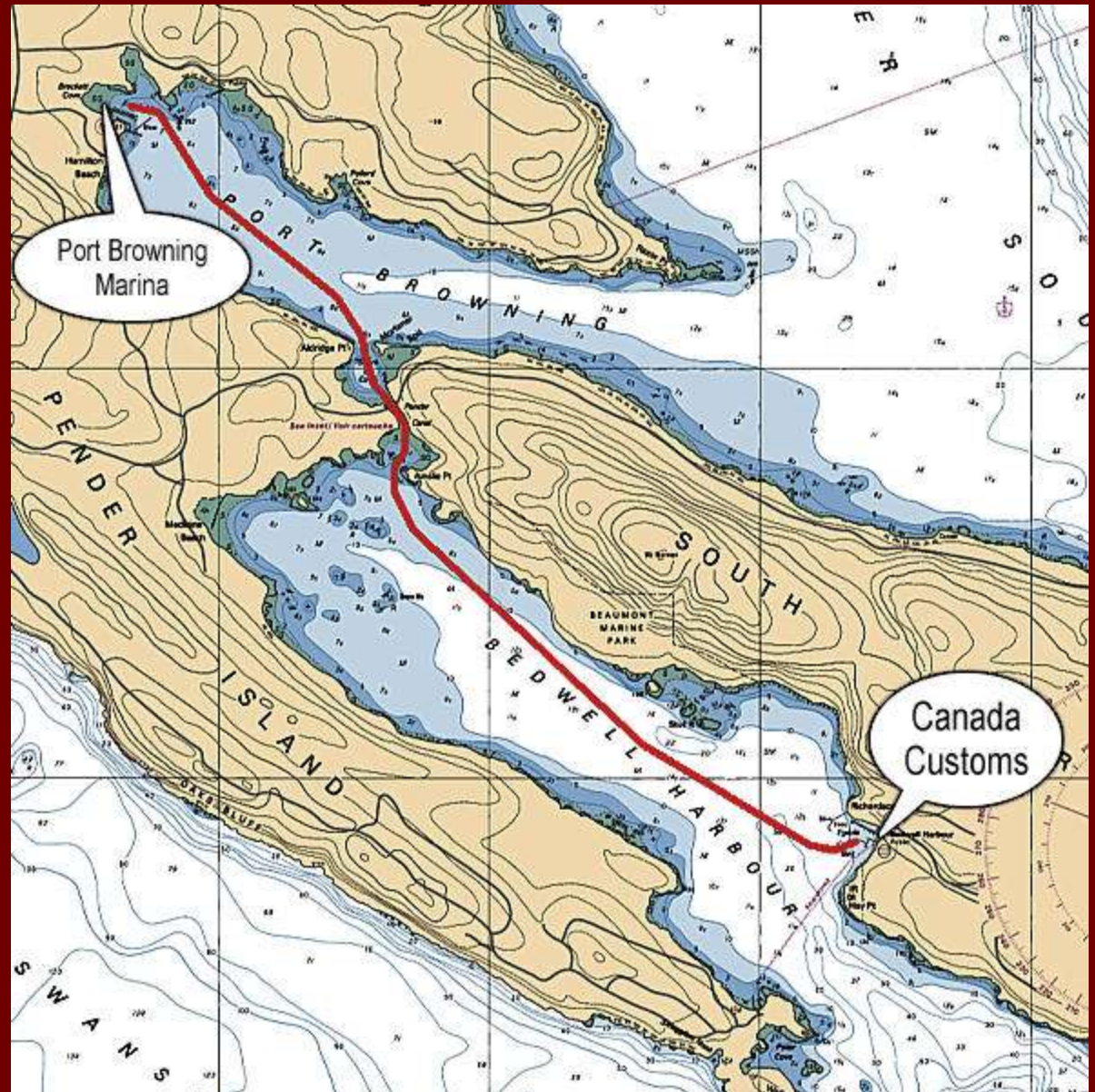


Looking Out of Bedwell Harbour



- Bedwell Harbour to Port Browning

- 2.6 nm 39 Minutes @ 4 knots



Pender Canal Bridge



Pender Canal Clearance 29 feet 9 inches



Port Browning Marina



Port Browning Marina Restaurant and Pub

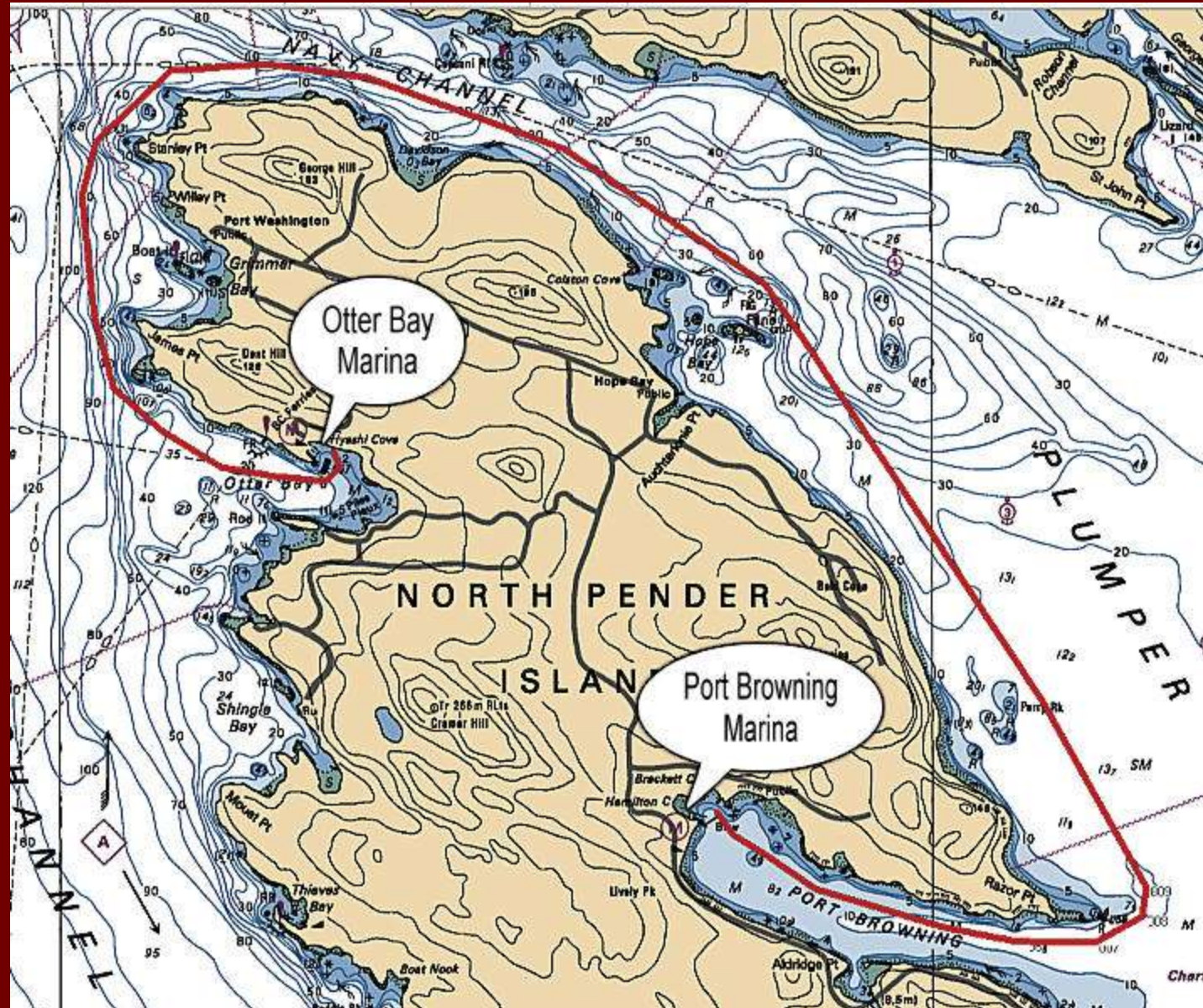


Port Browning Marina Swimming Pool



• Port Browning to Otter Bay

- 9.1 nm
- One Hour 18 Minutes @ 7 knots



Otter Bay Flag Display and Lookout



Otter Bay Marina



In Otter Bay Marina



Otter Bay Store



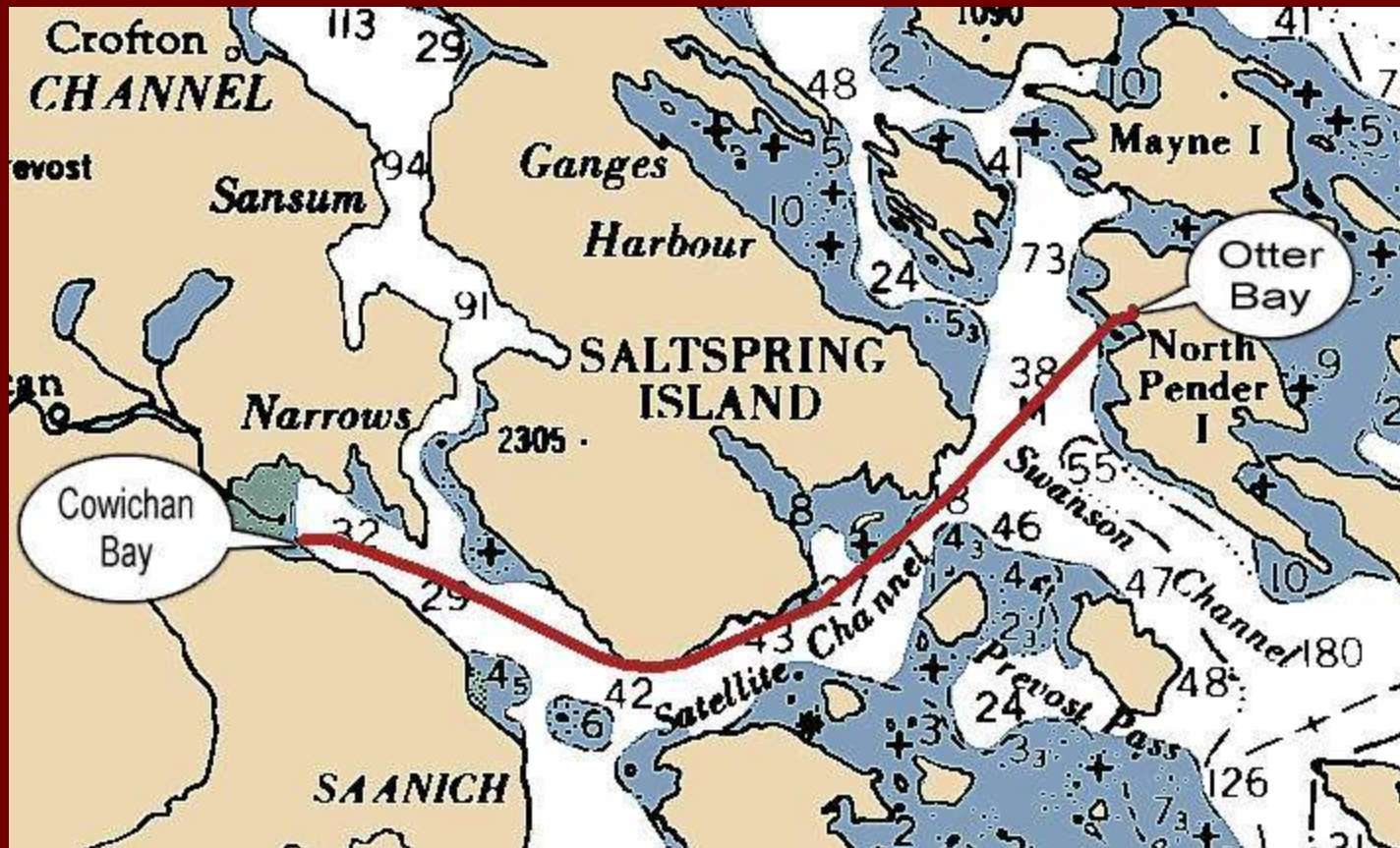
Pool in Otter Bay Marina



Otter Bay Sing Along



- Otter Bay to Cowichan Bay
- 14.6 nm Two Hours 5 Minutes @ 7 knots



Otter Bay to Cowichan Bay

- On Satellite Channel
- 14.8 nautical miles
- 2 hours 6 minutes
@ 7.0 knots





In Cowichan Bay



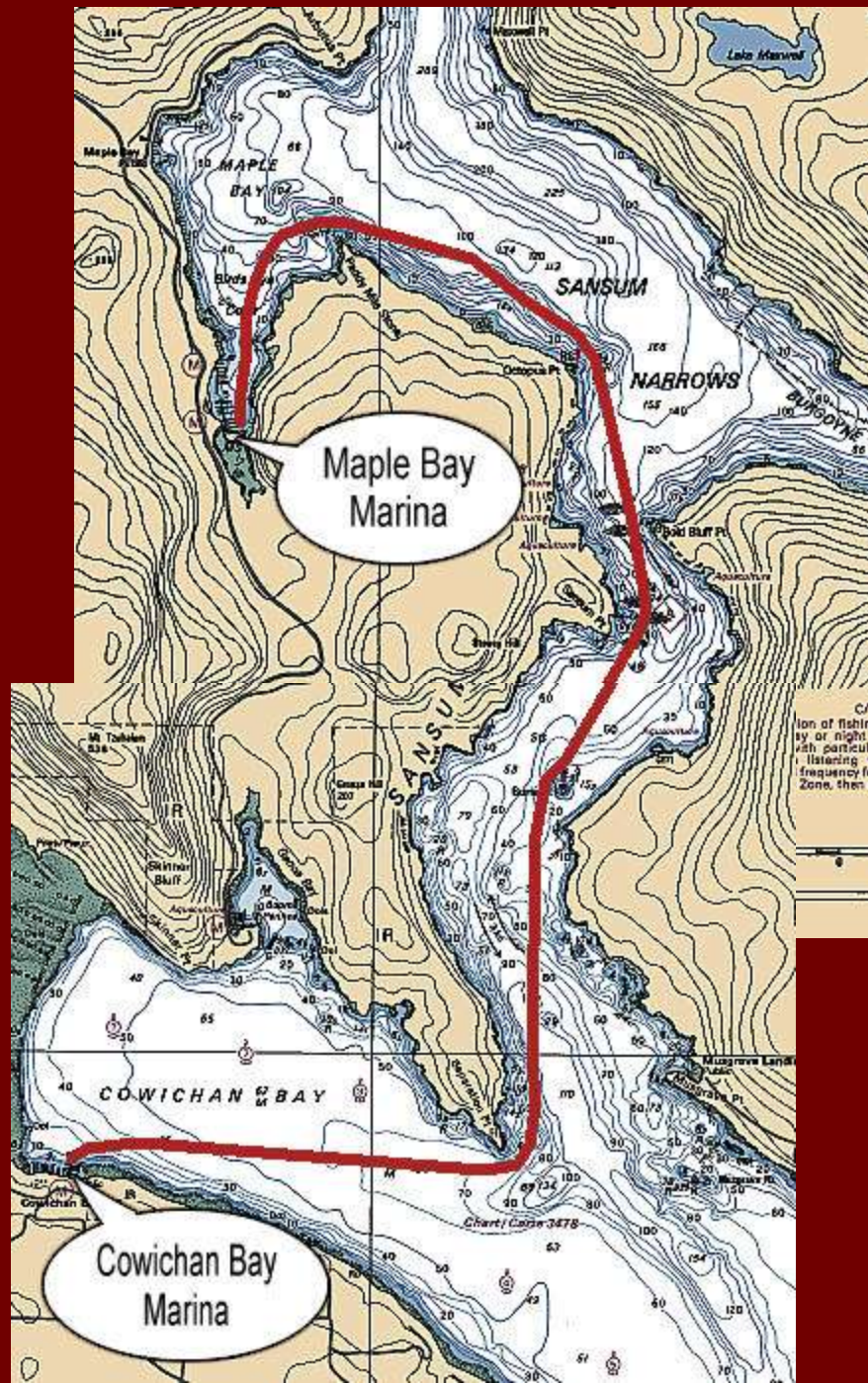


Restaurants in Cowichan Bay



- Cowichan Bay to Maple Bay

- 7.9 nm One Hour 8 Minutes @ 7 knots



- Maple Bay Marina, on Vancouver Island

21.0 nm from Bedwell Harbour – 3hr @ 7.0 knots

Thru
Sansum
Narrows to
Birds Eye
Cove, in
Maple
Bay

Water,
power,
fuel,
Pub,
restaurant,
ice and
marine
supplies.



Maple Bay Pub

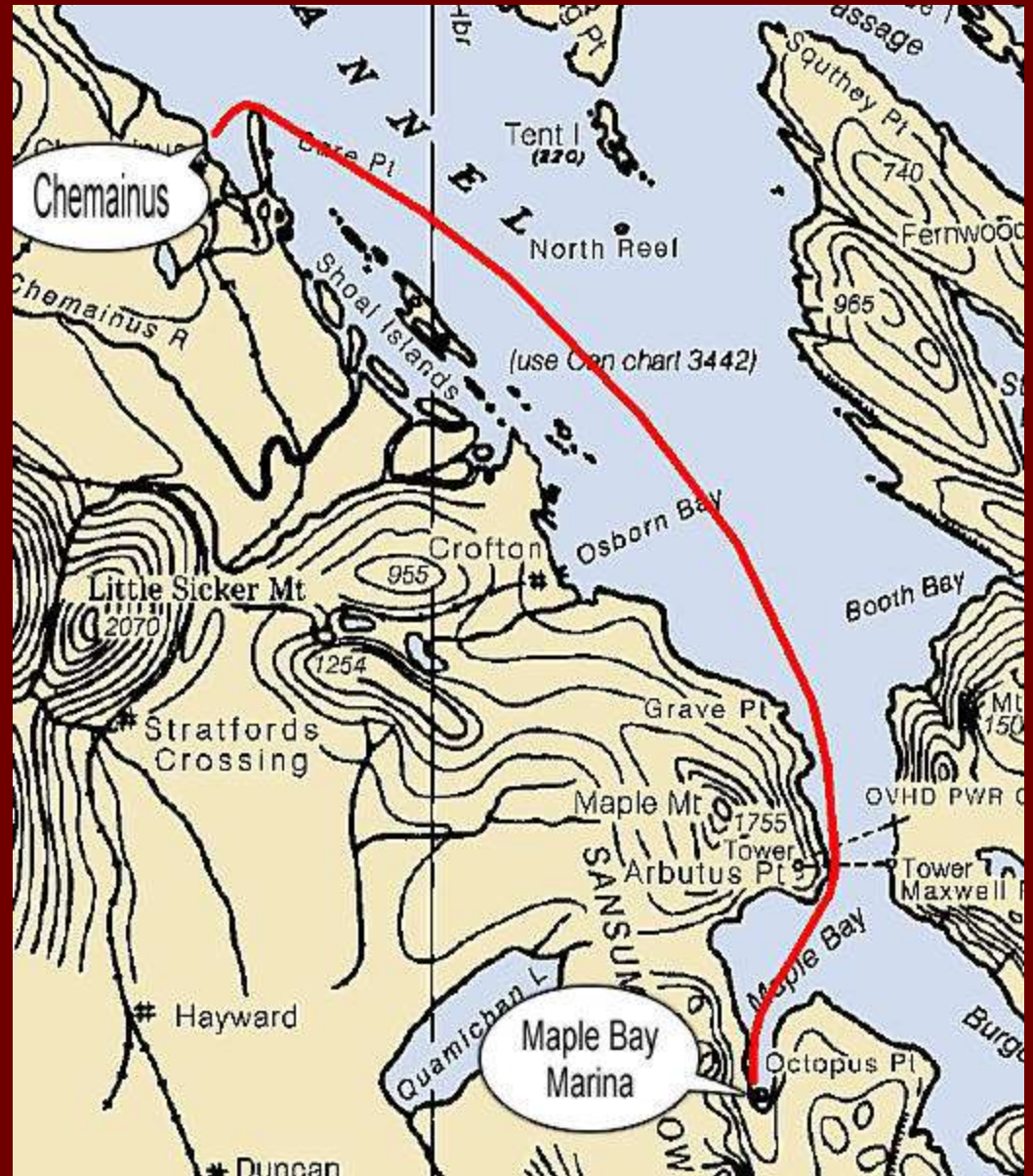


Tugboat Rendezvous in Maple Bay Marina



- Maple Bay to Chemainus

- 10.8 nm
- One Hour
- 35 Minutes
- @ 7 knots



- Chemainus

City of
murals

10.8 nm from Maple Bay
1hr 33min @ 7.0 knots



Short walk to grocery store with ice. Abundant water and power on dock.

- Chemainus

City of murals

10.8 nm from Maple Bay
1hr 33min @ 7.0 knots



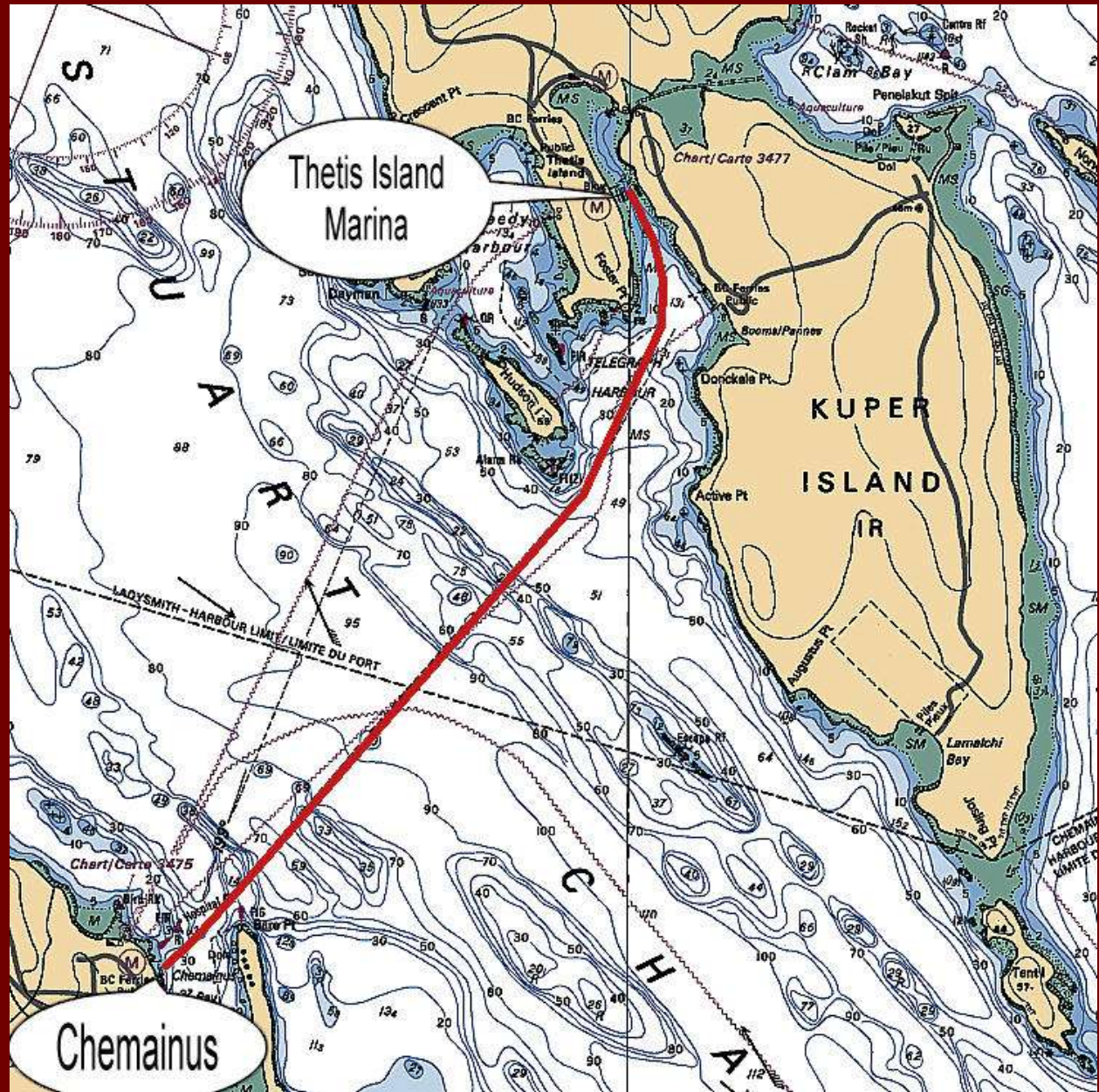
Short walk to grocery store with ice. Abundant water and power on dock.

Chemainus Ferry



- Chemainus to Telegraph Harbour

- 3.8 nm 57 Minutes @ 4 knots



- Thetis Island Marina, Telegraph Harbour

3.8 nm from
Chemainus –
33min
@ 7.0 knots

Fuel, power,
garbage.

Limited water.

Restaurant
and Pub.

Best
fish &
chips,
anywhere.



Thetis Island Restaurant and Pub

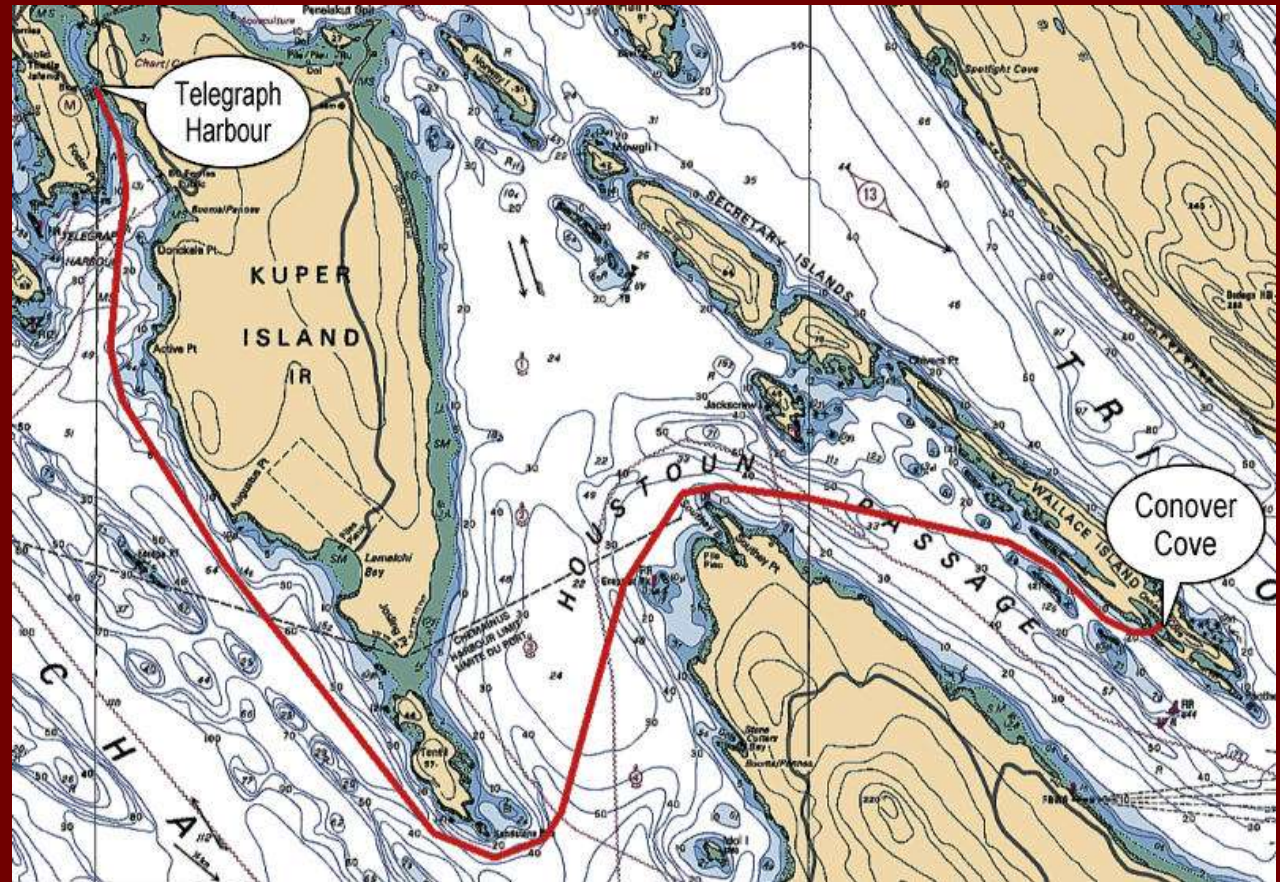


Thetis Island Pub



- Telegraph Harbour to Conover Cove

- 8.6 nm
- One Hour
- 14 Minutes
- @ 7 knots



- Conover Cove Provincial Marine Park,
Wallace Island



8.6 nm from
Telegraph Harbour

1hr 13min
@ 7.0 knots

- Conover Cove



Good stopover
point
for awaiting
slack current
in Dodd
Narrows

- Shore Tie in Conover Cove



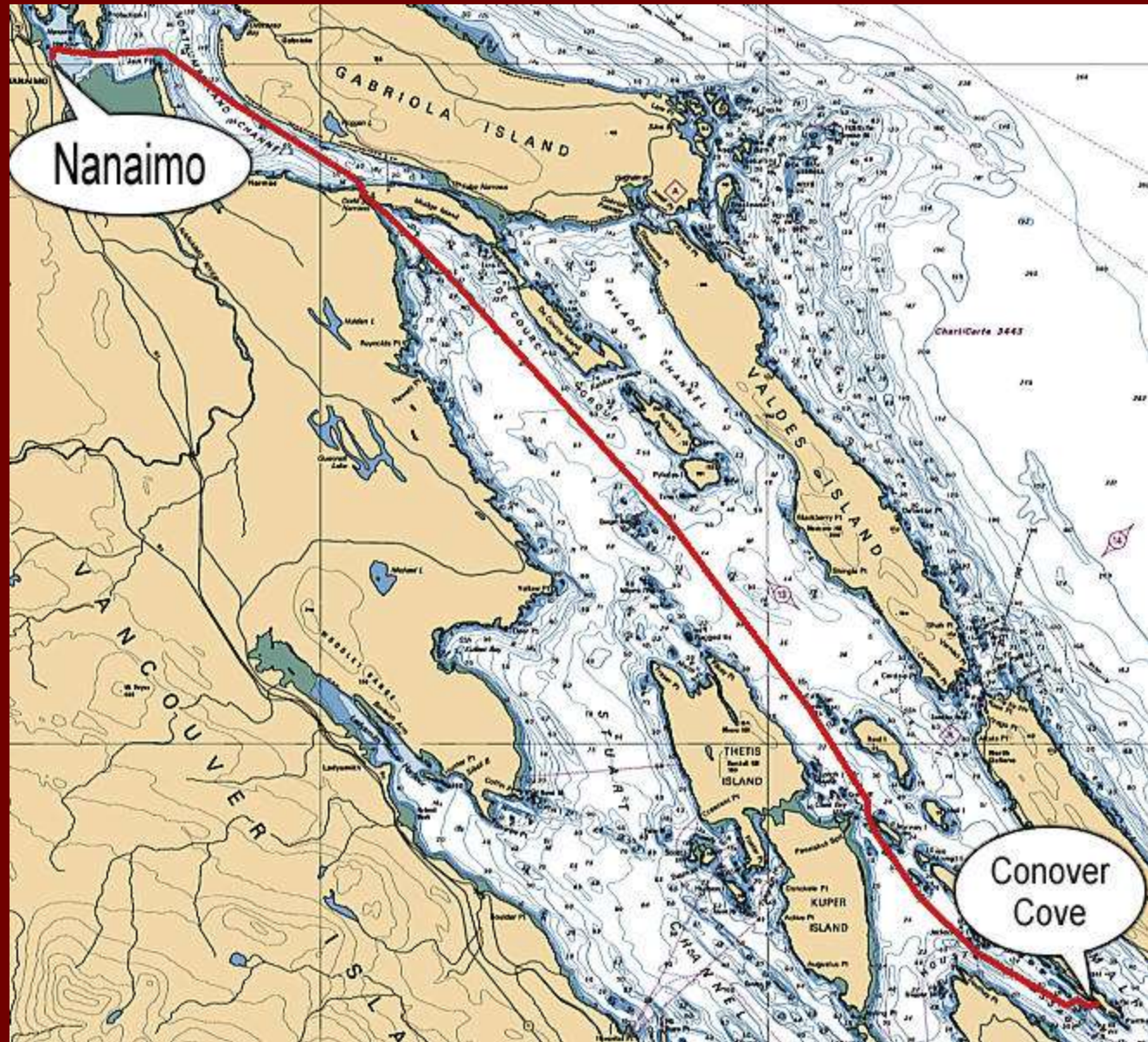
Steel rings
for shore
tie in north
cove.

- Doing a Shore Tie



- Conover Cove to Nanaimo

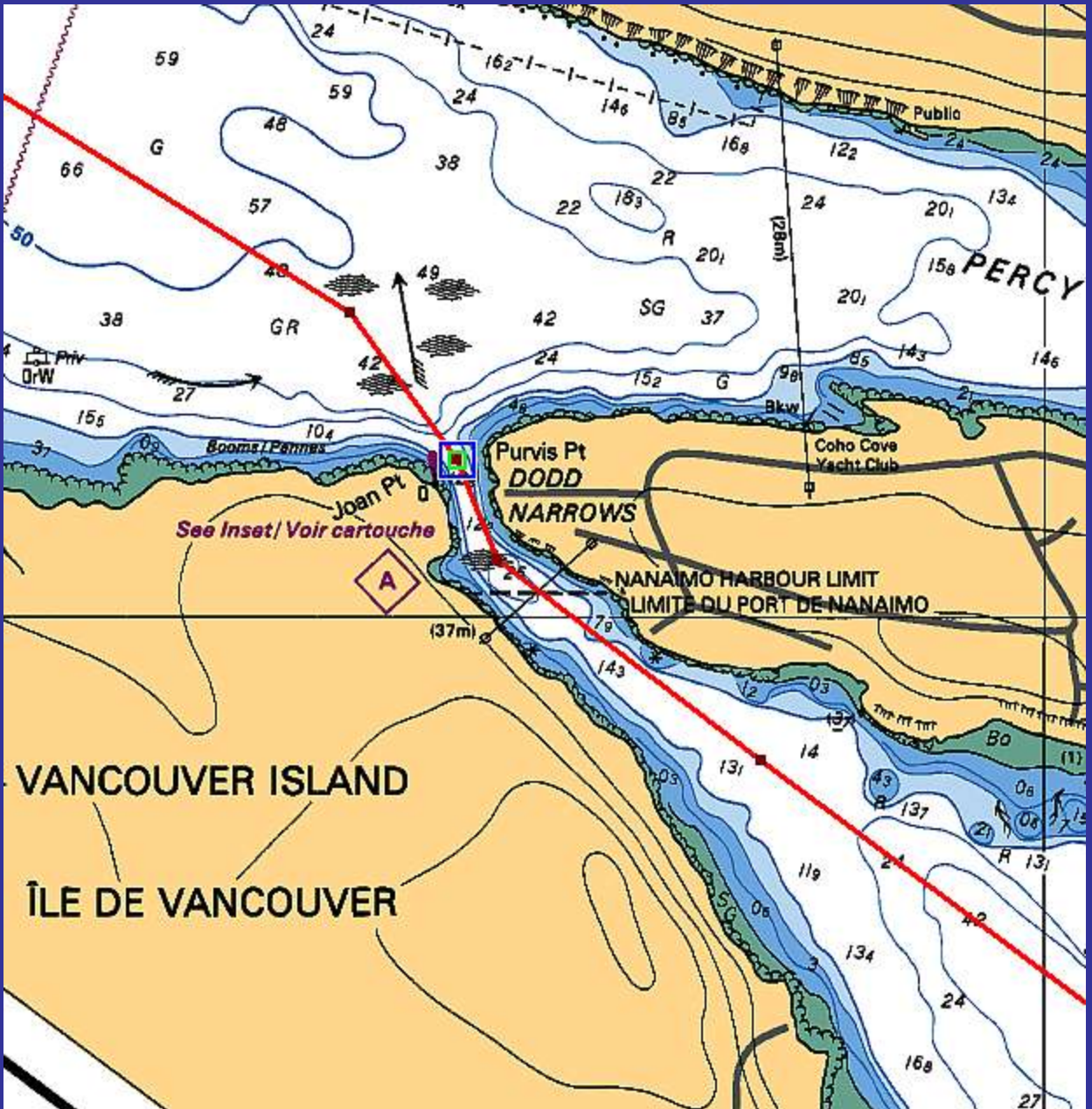
- 21.9 nm
Three Hours 8 Minutes @ 7 knots



- Thru Dodd Narrows

16.4 nm from
Conover Cove
2hr 20min
@ 7.0 knots

Usually a
number of
boats awaiting
slack current



Approaching Nanaimo



• Entrance to Nanaimo Inner Harbour

5.3 nm from
Dodd Narrows
45min @
7.0 knots

On the east
side of
Vancouver
Island, across
the Strait of
Georgia from
Vancouver,
B.C.



• Nanaimo Inner Harbour

Water, power,
ice, showers,
laundry. Close
to shopping.



Protection Island Foot Ferry



Inner Harbour Fish & Chips



- Nanaimo to Pender Harbour
- 33.9 nm
Four Hours
51 Minutes
@ 7 knots



B.C. Ferries in Departure Bay



Entering Hospital Bay in Pender Harbour



- Pender Harbour

John
Henry's
fuel dock in
Hospital
Bay



44.9 nm to Princess Louisa Inlet
6hr 25min @ 7.0 knots

John Henry's Store



Moorage in Hospital Bay

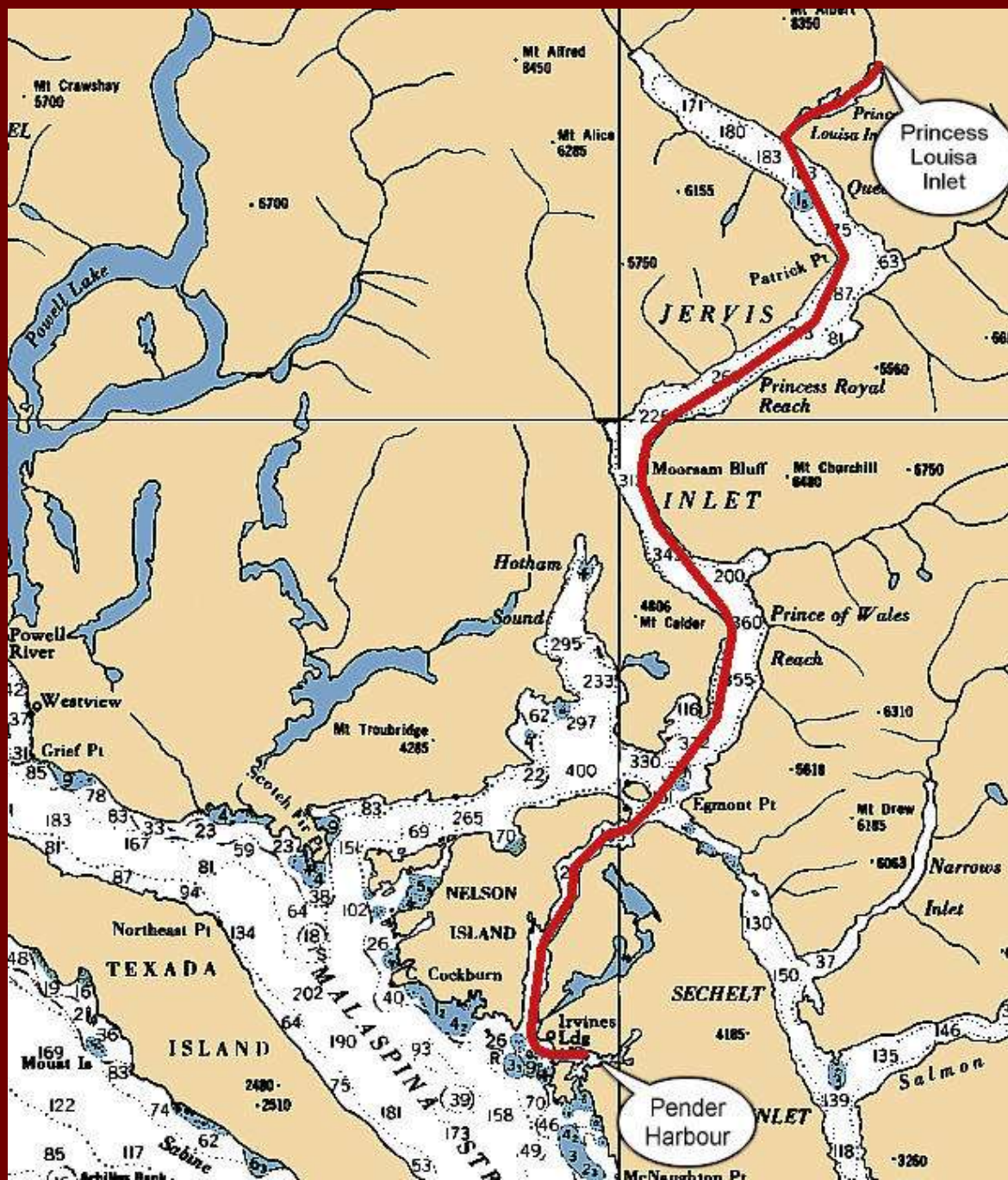


Pathway to Garden Bay



- Pender Harbour to Princess Louisa Inlet

- 44.9 nm
- Six Hours
- 25 Minutes
- @ 7 knots





- Entering the Inlet



- Chatterbox Falls in Princess Louisa Inlet



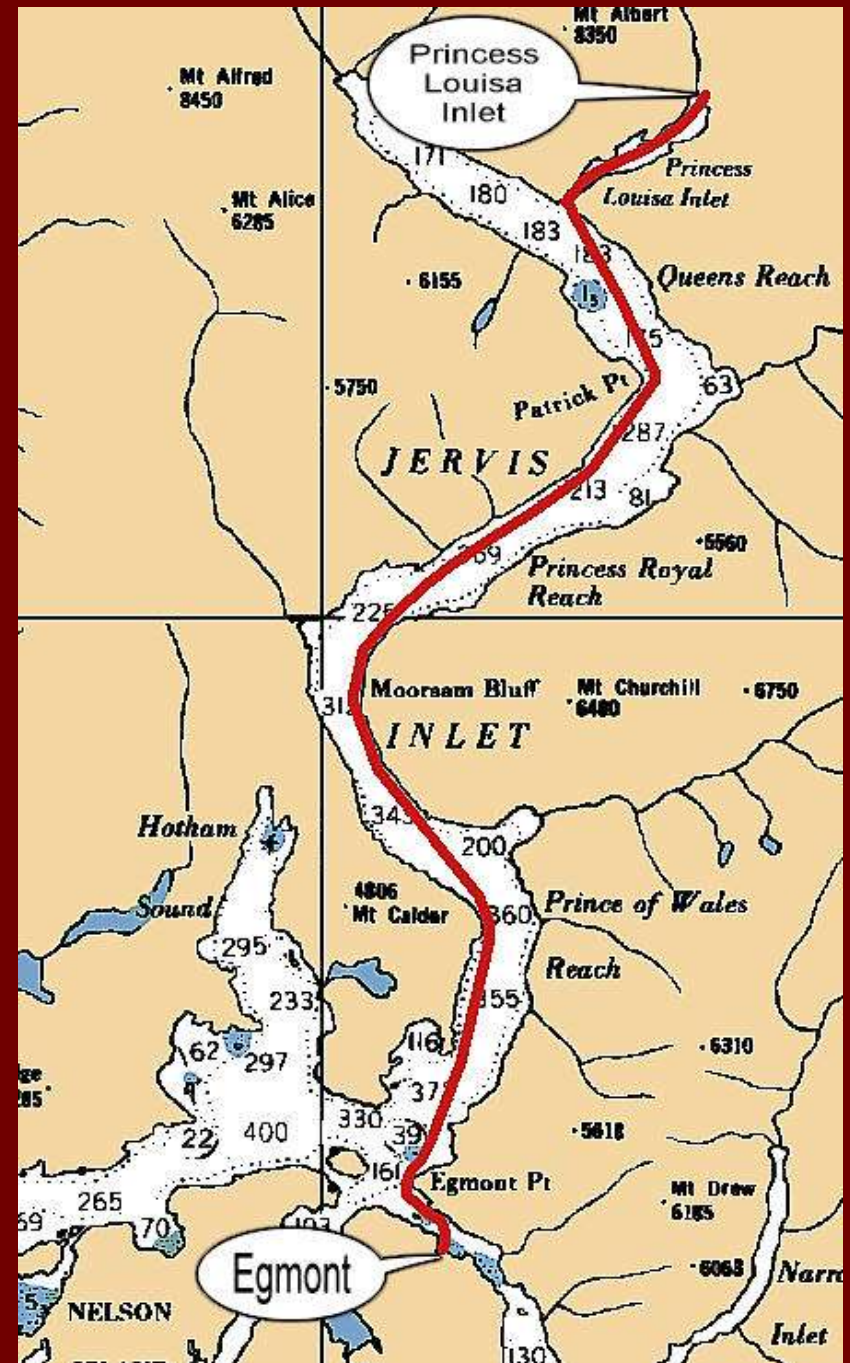
- The Dock in Princess Louisa Inlet

- Princess Louisa in a 21-Foot Reinell



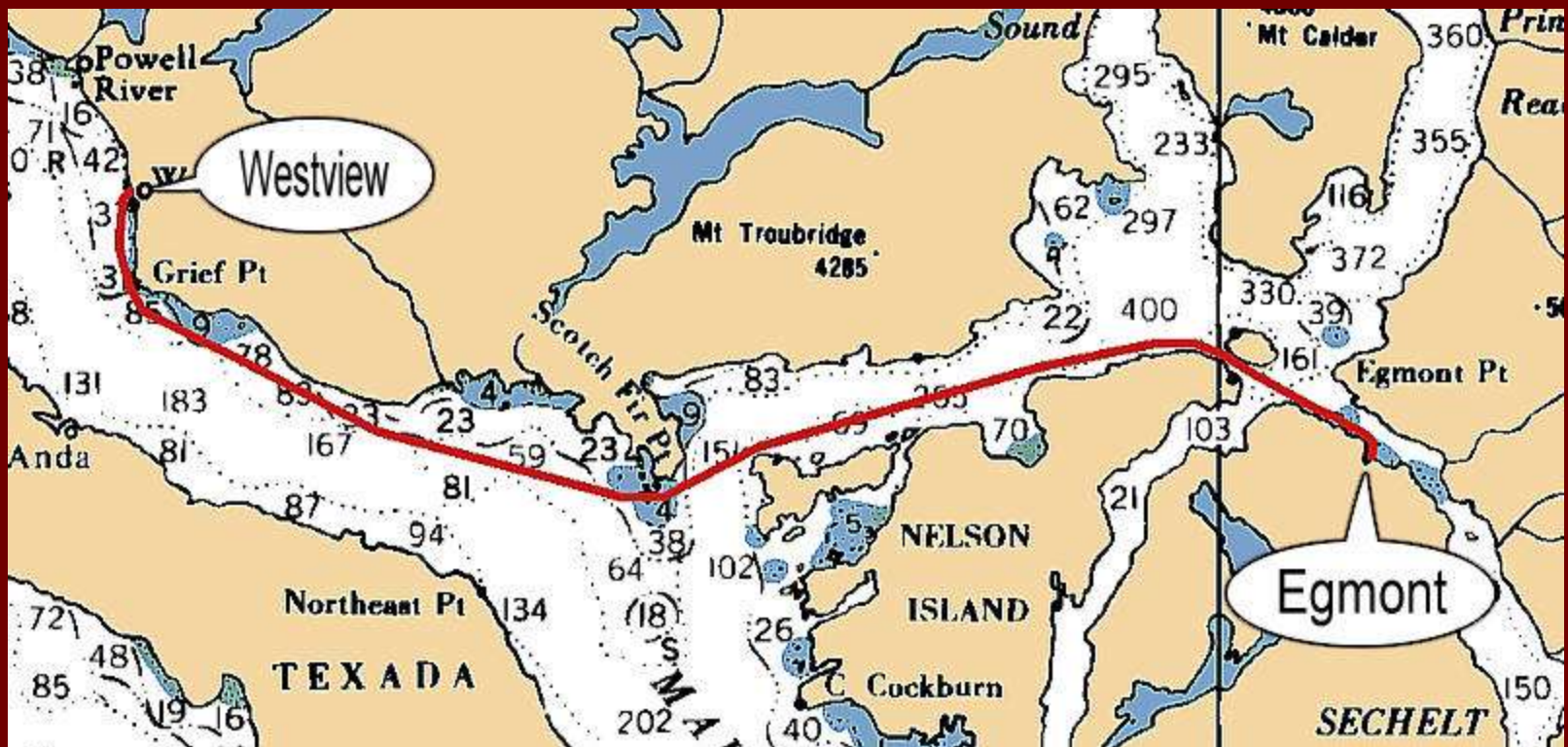
• Princess Louisa Inlet to Egmont

- 4.3 nm Head of inlet to Malibu Rapids
- 30.3 nm Malibu Rapids to Egmont
- 4 hours 57 minutes @ 7.0 knots



- Egmont to Westview

- 27.6 nm Three Hours 56 Minutes @ 7 knots



- Westview Marina

24.6 nm from Pender Harbour
3hr 30min @ 7.0 knots

Fuel,
water,
power.



Ferry
to Comox,
on
Vancouver
Island

Westview Marina Fuel Dock

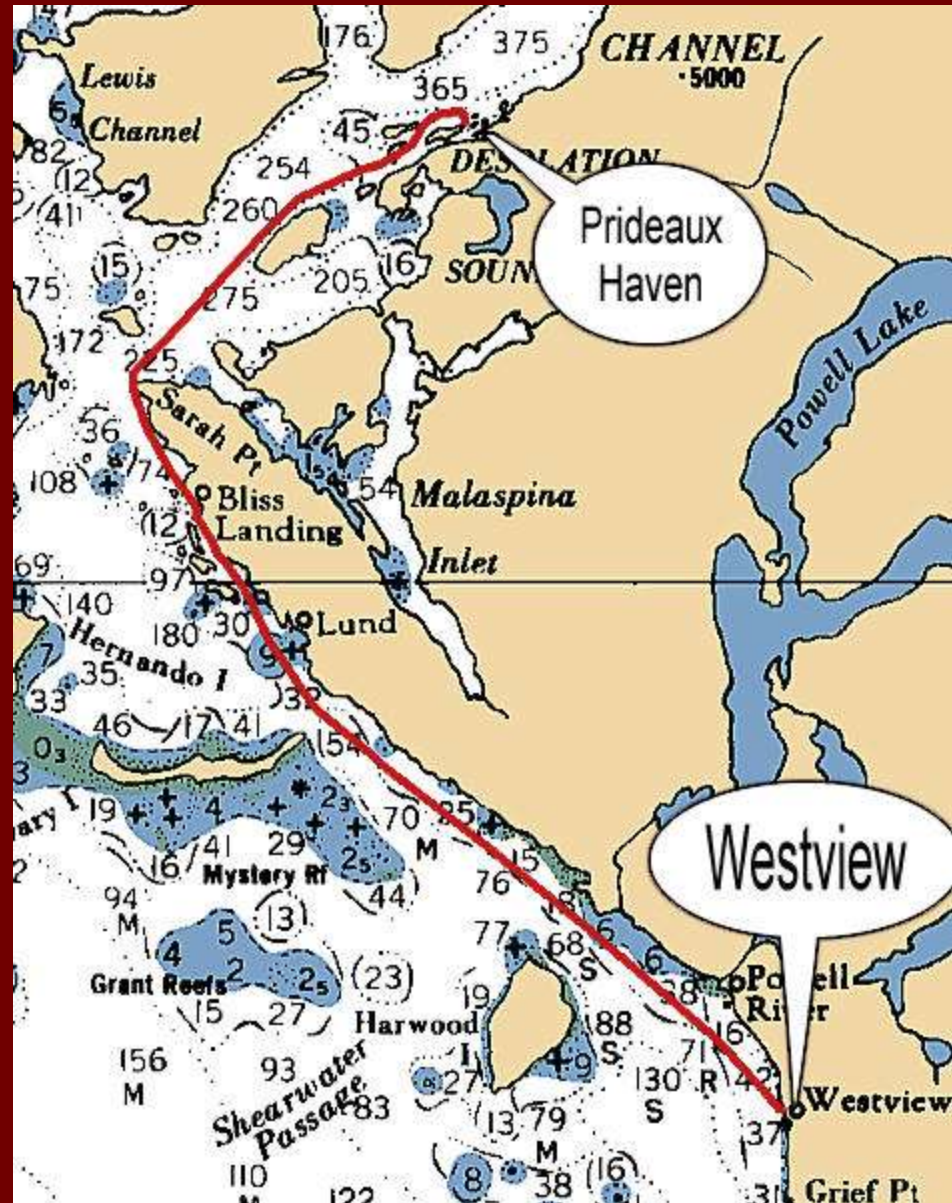


Comox Ferry in Westview



- Westview to Prideaux Haven

- 27.6 nm
Three Hours
57 Minutes
@ 7 knots



Leaving Westview Marina



Copeland Islands Marine Park



Sarah Point, the Entrance to Desolation Sound



Entering Prideaux Haven



In Prideaux Haven



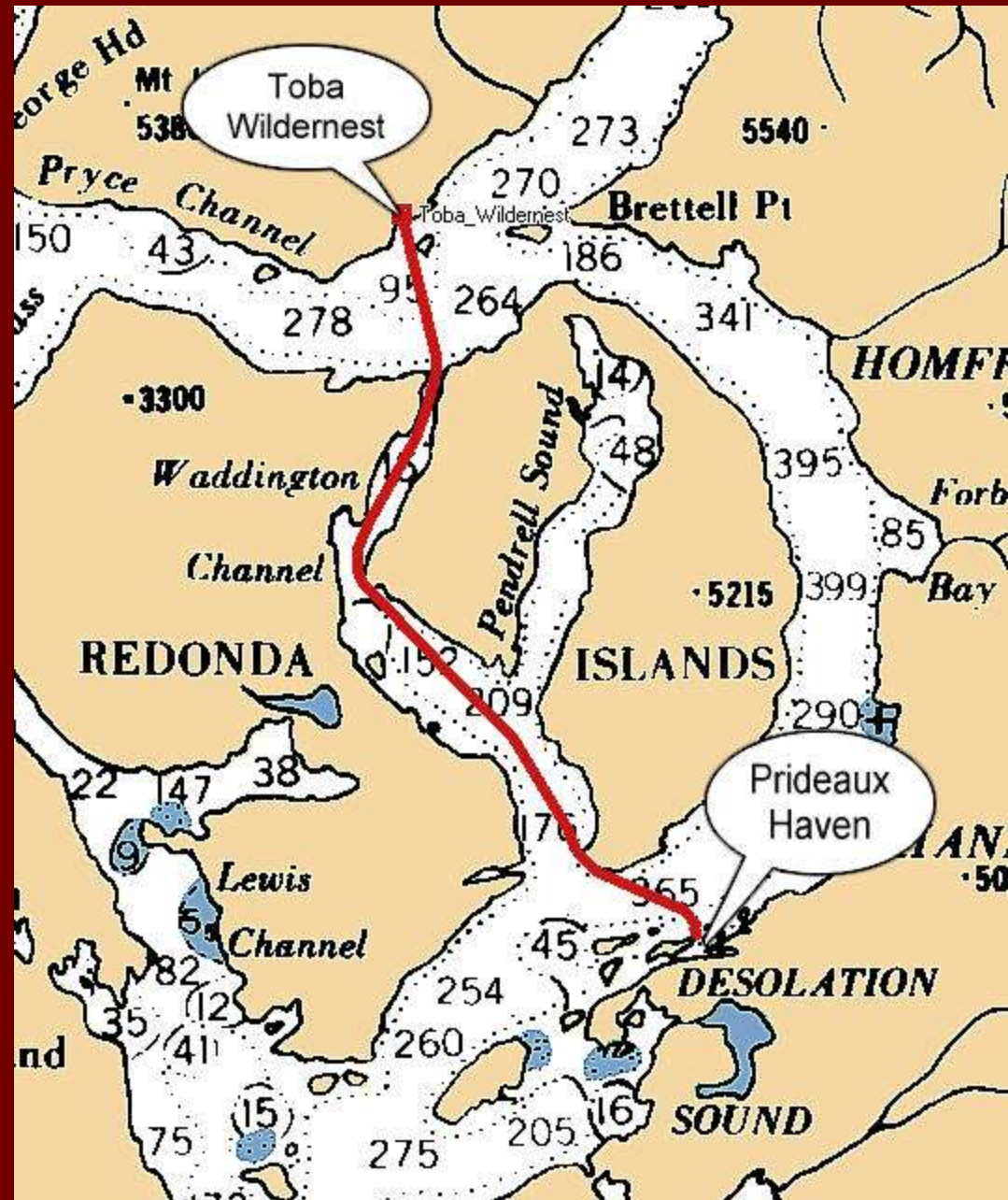
Anchorage in Prideaux Haven



JUL 13 2001

- **Prideaux Haven to Toba Inlet**

- 13.4 nm
- One Hour 55 Minutes
- @ 7 knots
- to Toba Wilderndest



Roscoe Bay Marine Park



Walsh Cove Marine Park



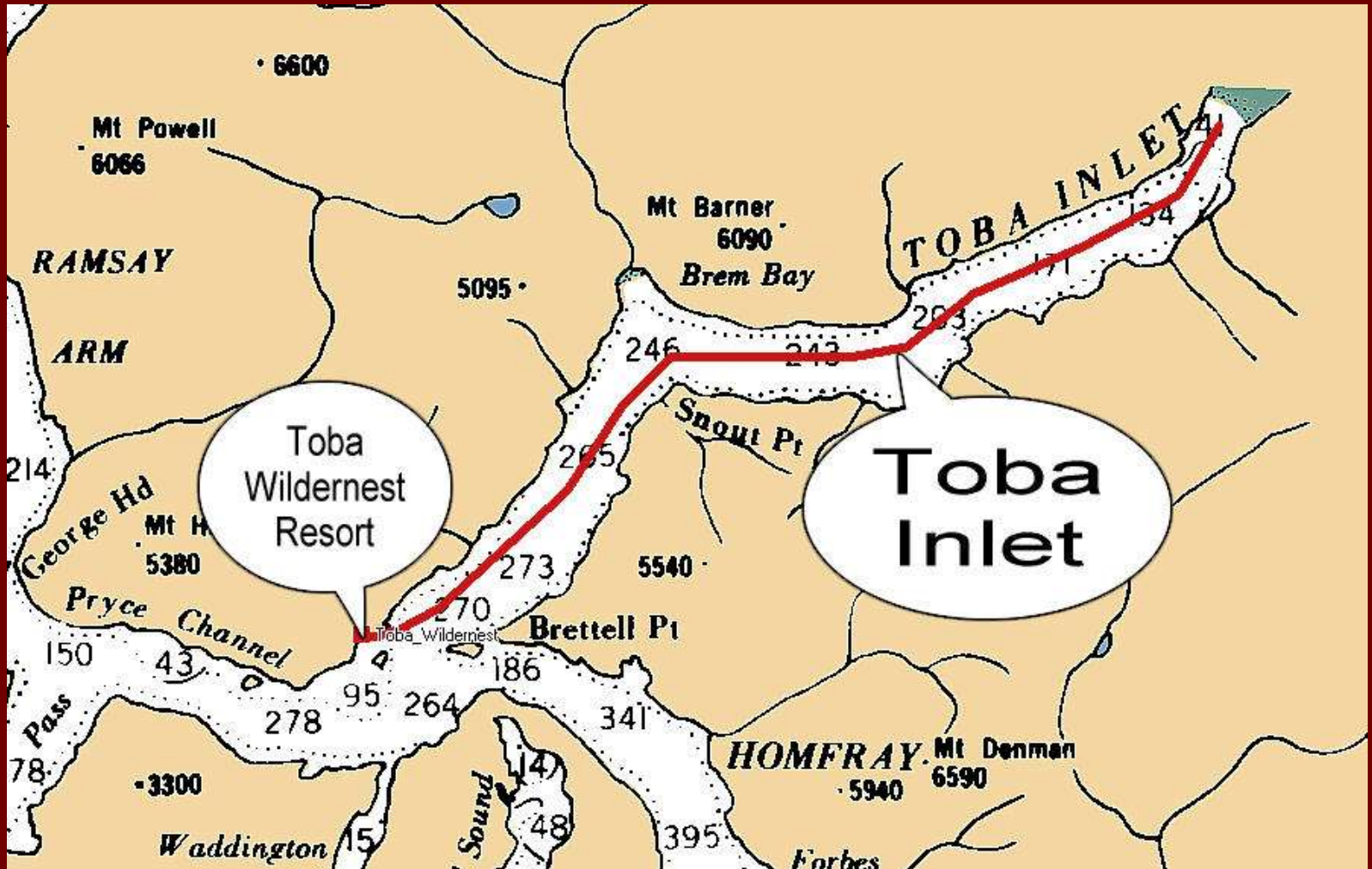
North End Waddington Channel





- View from Toba Wildernest Resort

- Toba Wilderrest to Toba Inlet and Return
- 19.5 nm one way, 39.0 nm round trip.
Five Hours 34 Minutes round trip @ 7 knots



- The waterfalls of Toba Inlet



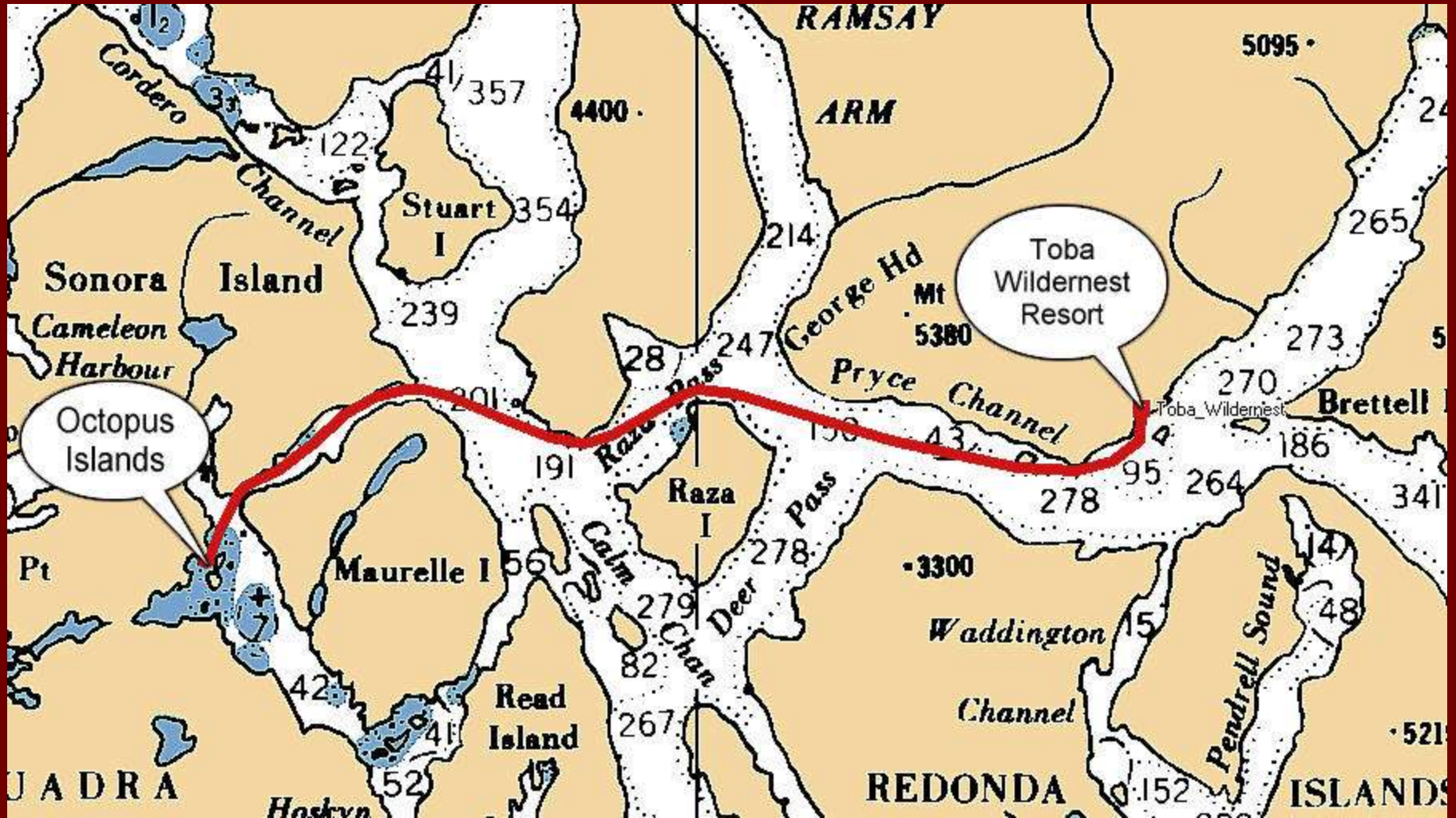
Toba Inlet

- Great Views in Toba Inlet



• Toba Inlet to Octopus Islands

- 19.1 nm Two Hours 44 Minutes @ 7 knots



- Octopus Islands Marine Park



Northeast
side of
Quadra
Island

19.1 nm from
Toba Wildernest
2hr 41min
@ 7.0 knots

- Octopus Islands Anchorage



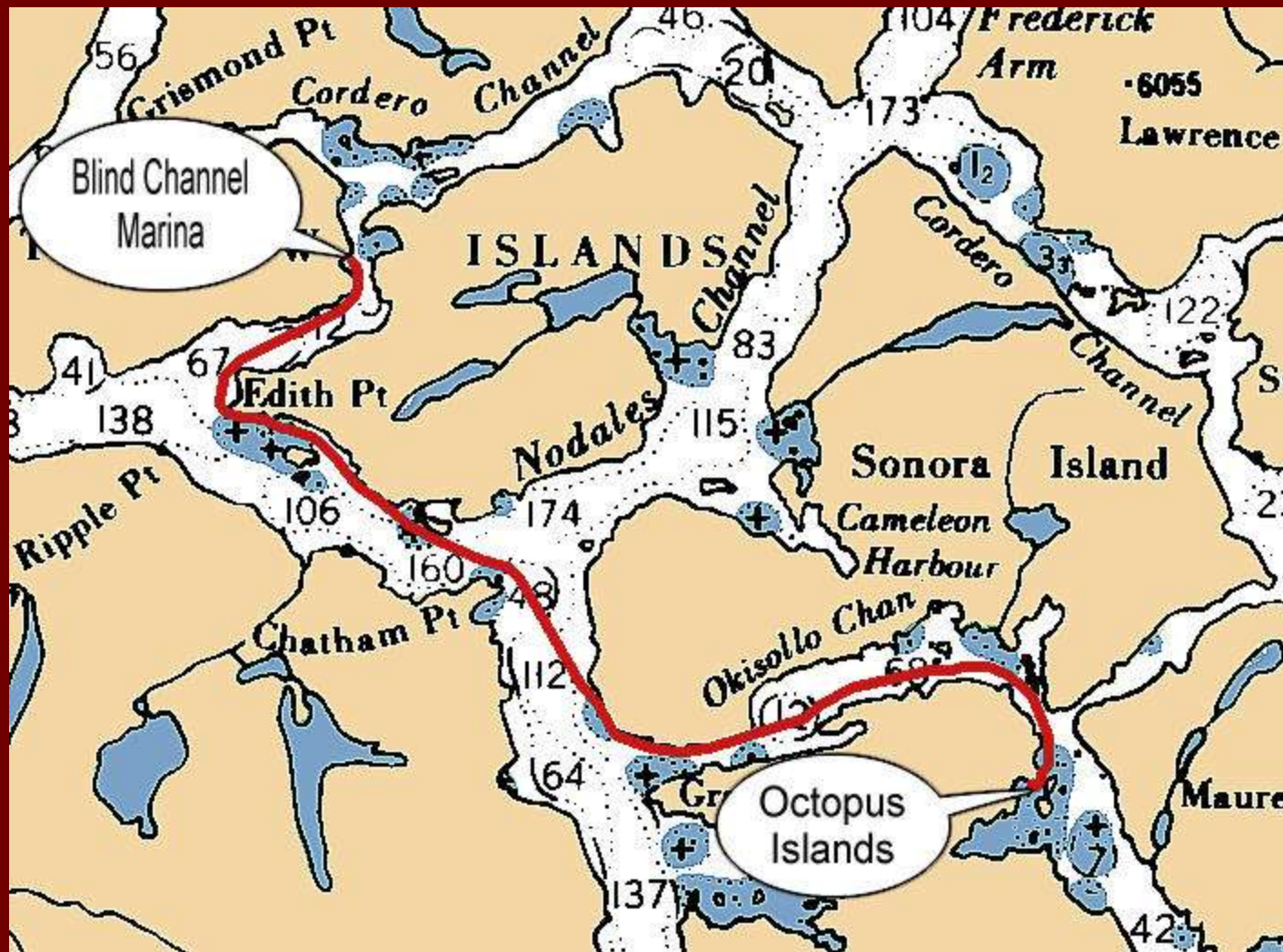
- Shore Tie in Octopus Islands



- Kayakers Landing in Octopus Islands



- Octopus Islands to Blind Channel
- 20.7 nm Two Hours 57 Minutes @ 7 knots



- Cruise Liner in Discovery Passage



Via the Okisollo Channel route

- Blind Channel, West Thurlow Island

Open field
and hiking trails

Nice family
run resort
with good
store, restaurant,
fuel, showers,
and laundry.



- Blind Channel Resort

20.7 nm from
Octopus
Islands via
Okisollo
Channel



On Mayne
Passage,
West
Thurlow
Island

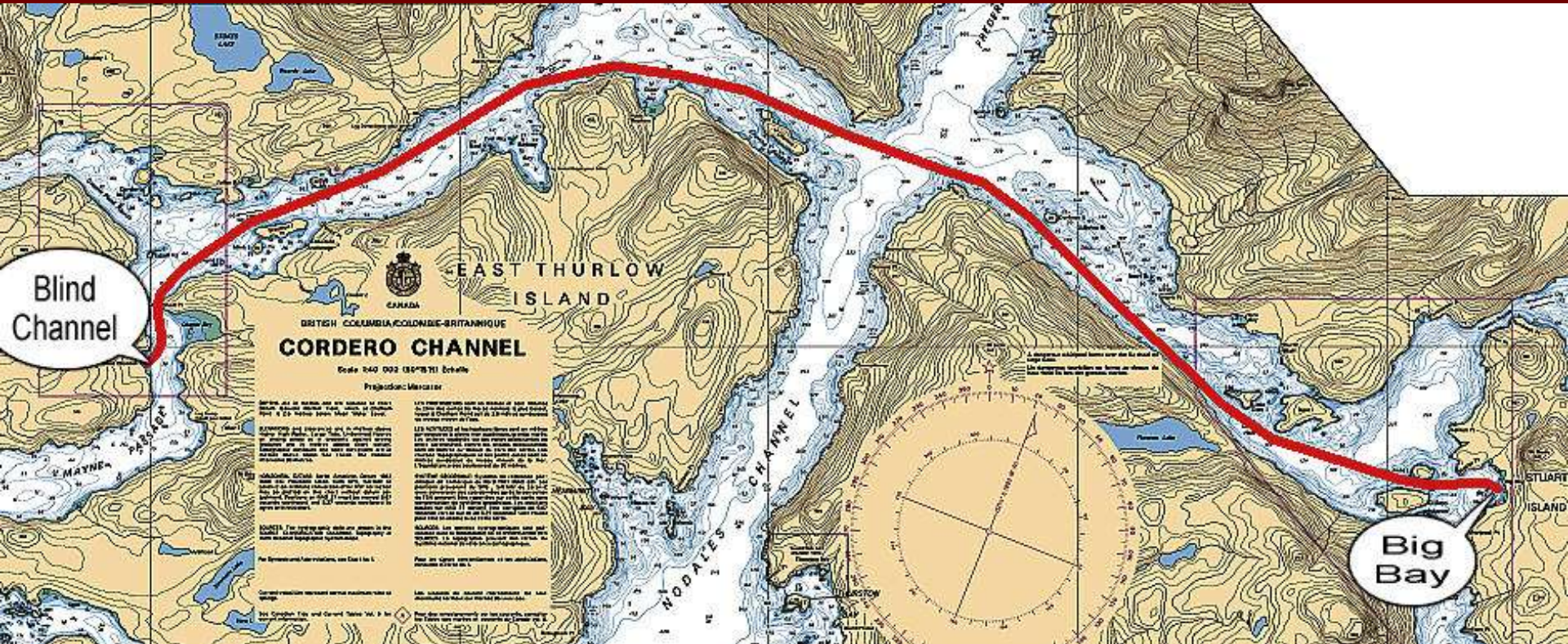
- End of the trail in Blind Channel



JUN 19 2003

• Blind Channel to Big Bay

- 16.6 nm Two Hours 22 Minutes @ 7 knots



- Big Bay

On Stuart Island

Via Cordero
Channel

Unfortunately, the old Big Bay Marina is no longer open to the public. But the Stuart Island Community has opened a new public facility in Big Bay with 1050 feet of dock.



- Happy Adventure Cruisers from Campbell River



Approx.
32 nm
cruise
from
Campbell
River

Government Dock in Big Bay

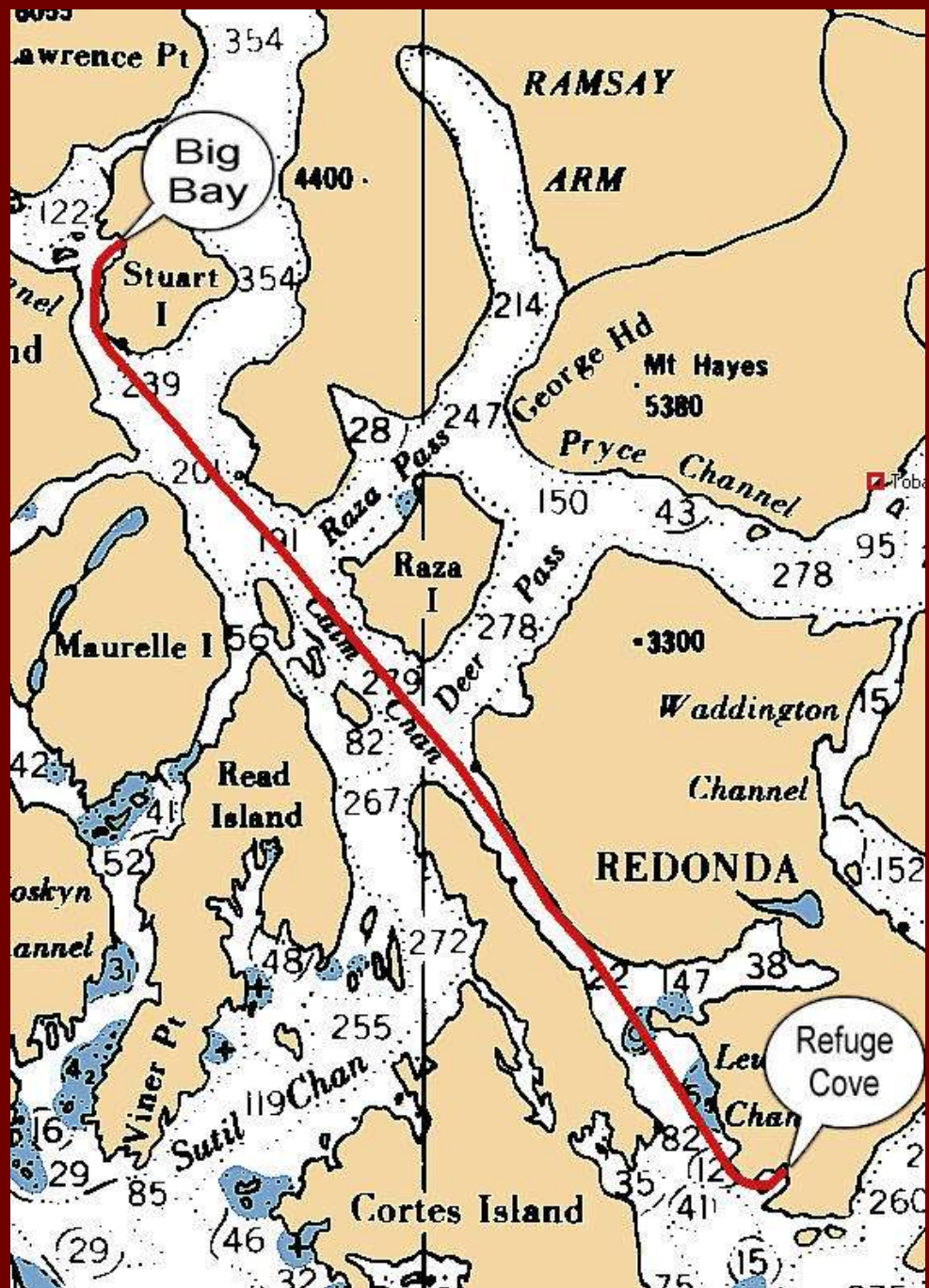


Mount Muehle in Big Bay



- Big Bay to Refuge Cove

- 21.2 nm
- Three Hours
- 2 Minutes @ 7 knots



- Lewis Channel



- Refuge Cove, West Redonda Island

Fuel,
propane,
water.

6.8 nm from
Copeland
Islands –
58min @
7.0 knots



- Refuge Cove Store

Groceries,
liquor,
ice,
showers,
laundry.

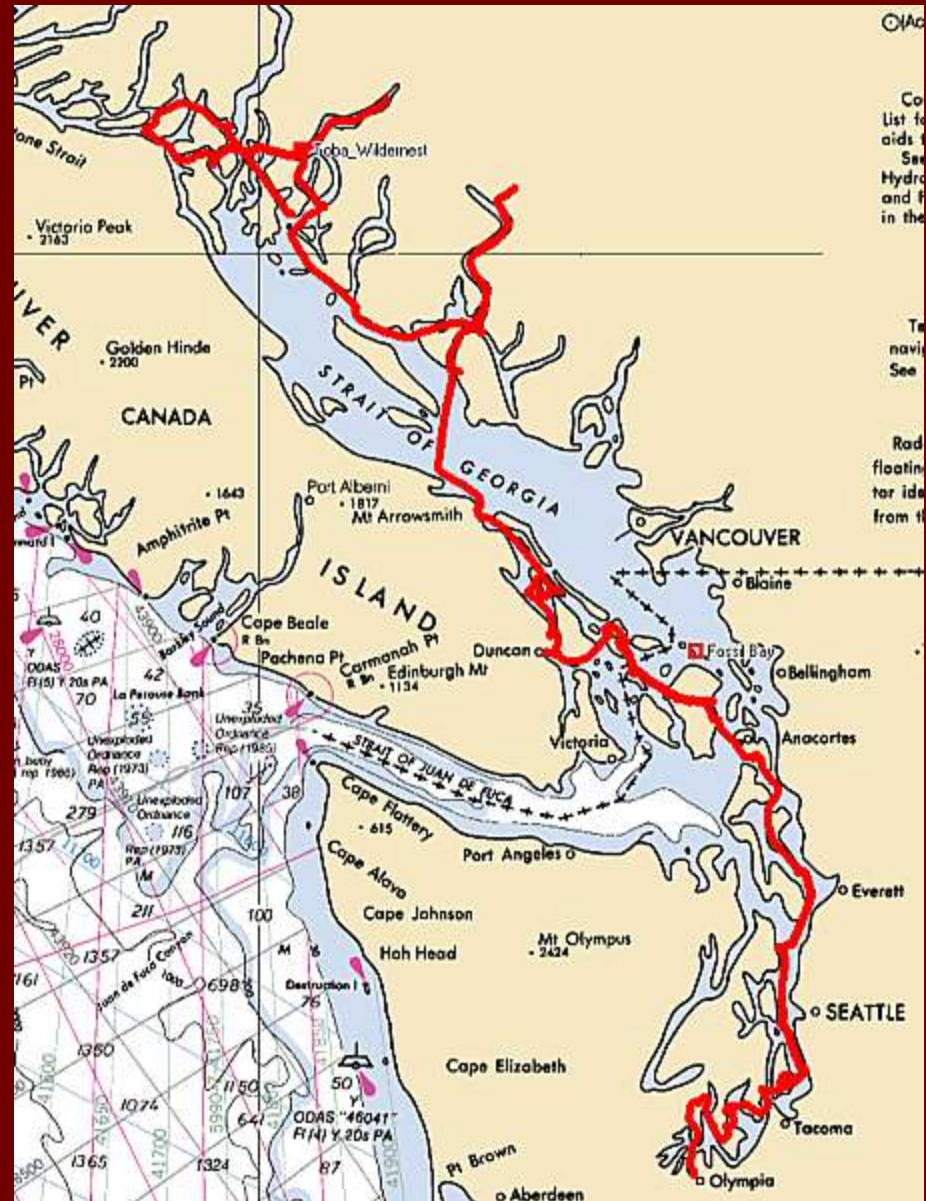
On Lewis
Channel
across from
Cortes
Island



Highlights of the Salish Sea

- 260 NM

Olympia to
Desolation
Sound, ending in
Refuge Cove



- Thanks for the memories,

Carl Tenning



QE  *Too*



http://carlten.tripod.com/q_e_too/